

# The PENNSWOODPUSHER

May 2003 A Quarterly Publication of the Pennsylvania State Chess Federation

## TRIUMPH, TRAGEDY, and TIEBREAKS

### Record Turnout at Bloomsburg In Shadow of Dunne Tragedy

Janet Dunne 1940-2003  
Ronald "Buddy" Newman 2000-2003

On the morning of Sunday, February 16, fire raced through the home of FIDE-Master and *Pennswoodpusher* columnist Alex Dunne. By the time firefighters arrived, the building was engulfed in flames. Alex's wife Janet, and his two-year-old grandson "Buddy", were killed in the fire, and his home was totally destroyed. Alex was playing in the US Amateur Team East tournament in New Jersey at the time of the fire.

The Pennsylvania State Chess Federation has set up a fund to assist Alex. Donations may be sent to Dr. Ira Lee Riddle; 400 Newtown Road; Warminster 18974. Please make checks payable to PSCF and note that the donation is for the Alex Dunne Fund.

The Editor would like to dedicate this issue of *The Pennswoodpusher* to the memory of Janet Dunne and Ronald Newman.

### PSCF Quick Championship by Joseph J. Mucerino Jr.

Ten years ago, the PSCF Scholastic and Bloomsburg University Open were hit hard by the Blizzard of '93. Unfortunately I did not attend that year, and was stuck at home shoveling the driveway. As this March approached, I was worried that Mother Nature may celebrate the tenth anniversary of that storm by pounding us with even more snow. Would we all be throwing snowballs at the tournament directors? The answer was no. Caissa blessed us with a nice weekend, and everyone was able to concentrate on the chessmen instead of on snowmen.

Friday night, March 7, marked the fifth edition of the PSCF Quick Chess Championship. This tournament has grown from humble beginnings. In 1999 there were 22 entries, and 15 of those were a group of players Robert Milisits brought in from Pittsburgh. This year, there were 114 entries, more than quintuple the amount! More than half the entries were rated below 1400, and so I believe a U1400 section should be added next year, to make the chess in both sections more competitive.

Sadly, the Quick tournament was held the same day that the great player from the Lehigh Valley, Martin Simsak, passed away at age 92. Among his tournament victories was the 1961 PSCF Rapid Transit Championship. I believe he would have been proud of the enthusiasm shown by the players in the Quick championship that night. (See *Martin's obituary on page 8. -Editor*)

The most notable absentee that evening was the defending champion, IM Stas Kriventsov. With no master-rated players at the starting line (although some did enter after the first round), and with the G-10 time

control, the event was pretty wide open, or so I thought. The tournament was still dominated by the higher-rated players, and was won by the highest-rated of them all, Gerald Bailleau, with a 6-0 score. He defeated me in Round 4:

### Joe Mucerino (1969) - Gerald Bailleau (2183) [D00]

PSCF Quick Championship (4), 07.03.2003

*Annotations by Joe Mucerino*

**1.d4 Nf6 2.Nc3 d5 3.e4 dxe4 4.f3 e3** This is called the Langeheinecke Variation. Many players with Black think this move takes White out of his opening book, but most Blackmar-Diemer Gambit players are prepared for it. Although Black declines the gambit pawn, he leaves White with a stupid-looking f-pawn, which takes away the Knight's best square and closes the f-file. **5.Bxe3 Bf5 6.Bc4** 6.g4!? is possible if you wish to play like that. **6...e6 7.Nge2 Be7 8.Ng3 Bg6 9.Nge4** Perhaps pushing the ugly f-pawn with 9.0-0 10.f4 11.f5 would have been better. **9...0-0 10.0-0 c6 11.Nxf6+ Bxf6 12.Ne4 Be7 13.c3 Nd7 14.Bd3 Qc7 15.Qe1 Rad8 16.Rd1 c5 17.Kh1 b6 18.dxc5 Nxc5 19.Nxc5 Bxc5 20.Bxg6 hxg6** Not 20...Bxe3 21.Bxh7+ Kxh7 22.Qxe3 winning a pawn. **21.Bxc5 Qxc5 22.Qh4 Rd5 23.h3?** My Rook on f1 is my worse piece, so I should play 23.Rfe1 ,moving it to a better square. **23...Qd6!** 23...Rfd8 allows 24.Qxd8+ Rxd8 25.Rxd8+ Kh7 26.Rfd1 with an unbalanced position. **24.Rxd5 Qxd5 25.b3?** This loses a pawn. 25.a3 did not appeal to me, but perhaps I should have tried; 25.Qa4 attacking a7 and threatening Rd1. **25...Qd3 26.Re1 Qxc3 27.Re4 Qc1+ 28.Kh2 Qc7+ 29.Kh1 Rd8 30.Rd4 Re8** Perhaps Black was afraid that after 30...Rxd4 31.Qxd4 I might later get a perpetual check with Qd8+, Qh4+ etc. **31.Rc4 Qe5** Threatening to win a second pawn with ...Qa1+. **32.Qf2 Rd8** The threat is the devastating ...Rd1+. **33.Qc2 Rd5 34.b4** To prevent the simplifying ...Rc5. **34...Qd6** Again, ...Rd1+ is terminal. **35.f4 Rd2 36.Qb3 Kh7** Hiding from any checks. **37.a4?? Qd5** It's mate or the Rook. **0-1**

There was a logjam of players tied for second place with 5 points: Gabriel Petesch, Ryan Milisits, Peter Minear, Joseph Pehoushek, Marty Frank, NM Sergey Shchukin, Robert Nicholson, and Christopher Pumarejo. Scoring 4 points was the top unrated, Paul Moyer. Brian Rhoads and Patrick Hoffman won the class F and G prizes respectively by scoring 3 1/2. David Baliles won the U600 prize with three points.

### PSCF State Scholastic Championship – by PSCF SE Scholastic Coordinator Dan Heisman

Junior Ryan Milisits became a repeat winner of the Pennsylvania High School Championship when he scored a clear first with a 4½ - ½ score. Ryan will again represent PA at the annual Denker Tournament of High School Champions. The High School Championships was part of the PA Scholastic Chess Championships held March 8-9 in Bloomsburg, PA. This year saw a strong jump in attendance; if you count entries in the 110+ player PA Quick Chess Championship, there

were almost 700 entrants! Even without the Quick Chess, Bloomsburg surpassed the National Chess Congress as the second largest event in the state, behind only the World Open. Congratulations to PA Scholastic Coordinator Steve McLaughlin – a great job in his first effort!

In the K-8 Open Section, Boris Valerstein of Newtown MS took the first place trophy on tiebreak, and was declared Middle School Co-Champion with Christopher Blaise Jr. and Thomas Hsiao, all at 4½ - ½. The Elementary Champion was Alex Heimann, who beat out his chief competitor, brother Mark, in the final round to score a perfect 5-0. The Primary (K-3) Champion was Wesley Loudon, again with a perfect 5-0 score.

State Grade Champions were Alex Duff (12<sup>th</sup>), Zack Tokar, Luis Guerrieri, and Michael Opaska (11<sup>th</sup>), Jeremiah Blocki, Rory Wasiolek, and Kevin Berthoud (10<sup>th</sup>), Kurt Schneider (9<sup>th</sup>), Erica McLaughlin, Elizabeth Lakata, and Max Weiss (8<sup>th</sup>), Bryan Joseph, Deniz Unal, Karl Gough, and Raul Trisal (7<sup>th</sup>), Evan Ames (6<sup>th</sup>), Gabe Petesch (5<sup>th</sup>), Mark Heimann (4<sup>th</sup>), Michael Samo (3<sup>rd</sup>), Prem Rajgopal and Hibiki Sakai (2<sup>nd</sup>), Andrew Brady (1<sup>st</sup>), and Cameron Fry (Kindergarden). It should also be mentioned that Ethan Stein, another Kindergarden player, scored the same as Cameron, but was from NJ, and thus was eligible for trophies, but not state titles.

In the non-championship sections, Peter Greene won the K-12 U1300, Michael Cook the K-12 U1000, Andrew Powers the K-6 U800, and Eric Stern the K-9 U1000.

The results of the team championship competitions were as follows: in the K-12 Open Masterman won the High School Championship, the Pittsburgh Chess League Juniors won the new K-12 club competition. In the K-8 Open Masterman won the Middle School Championship, Monroeville Chess Club the K-8 club title. In the K-6 Open the North Pittsburgh Homeschool Chess won the K-6 School Championship, the Pittsburgh Youth Chess Dragons the K-6 club title. In the K-3 Open the North Pittsburgh Homeschool Chess team won the K-3 School Championship and the Pittsburgh Youth Chess Dragons was the top K-3 club.

One concern I noted at the tournament was how many parents and coaches misplaced their players, putting them in sections inappropriate for their ages. The reason why the High School Championship Section is the “K-12 Open” instead of the “High School Open” is because we do not wish to preclude strong younger players from playing “up” against stronger, harder competition, as Mark Heimann did last year in the K-8. However, this year many coaches put players in inappropriate *lower rating* sections. For example, elementary players were placed in the K-12 U1000 section instead of the K-6 Open, and students in grades K-3 in the K-6 U800 instead of the K-3 Open. This strategy failed as 1) K-6 players in the K-12 U1000 section generally placed badly against the high school players of roughly the same ratings (no K-6 scored more than 3/5), and 2) Not only were few players in the K-3 Open rated over 800, but the K-3 players in the K-6 U800 were ineligible for their grade prizes! Therefore I made two suggestions: create two-day K-8 or K-6 “Under” section(s) to augment the K-6 Under 800 one-day section, and/or put a lower grade limit on non-championship sections. Under this latter proposal the K-12 Open would remain open to all grades, but the K-12 U1300 and K-12 U1000 would become a 9-12 U1300 and 9-12 U1000, to help the coaches see that these sections are intended for high school players.

During the tournament both the PSCF Scholastic Committee open and closed meetings were held. Among the issues discussed were: getting the Scholastic Committee policies into the By-Laws and onto the PSCF

website; defining a chess club and an active club member; providing web aid to help parents and coaches place players in appropriate sections; the possibility of a player simultaneously represent their school *and* a club; and emphasizing Championship sections and winners over artificially selected limit (“Under-X”) sections in some way, such as somewhat larger trophies, medallions for championship team members, etc.

Finally, our success is causing us to burst at the seams of the Kehr Building at Bloomsburg, so an investigation is underway to see if it is financially feasible to move the Scholastic Championships to another central site, possibly a hotel with large playing spaces, sometime in the next year or two.

**Joshua Barbara - Mark Heimann**

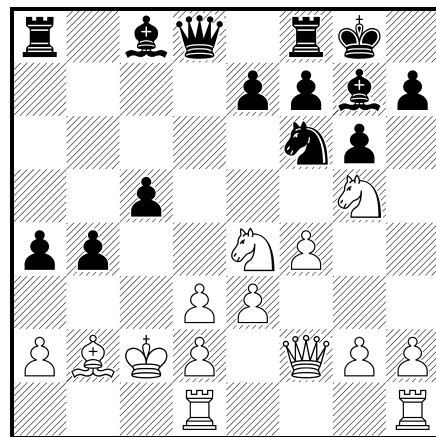
PSCF Scholastic K-6 Open (4), 09.03.2003

1.f4 d5 2.Nf3 Nf6 3.e3 Nc6 4.b3 Bf5 5.Bb5 Bd7 6.Bb2 a6 7.Bxc6 Bxc6 8.0-0 e6 9.Kh1 b6 10.Qe1 Bb7 11.d3 c5 12.Nbd2 Be7 13.Qe2 0-0 14.Ne5 Rc8 15.Rac1 b5 16.c4 Qd6 17.cxd5 exd5 18.h3 Nd7 19.Qg4 Nxe5 20.Bxe5 Qg6 21.Qd7 Qxd3 22.Qxb7 Qxd2 23.Qxe7 Qxe3 24.Rccl Qd2 25.Rd1 Qxa2 26.Rxd5 Qxb3 27.Rxc5 Qd3 28.Rfc1 Qa3 29.Bd6 Qxc1+ 30.Rxc1 Rxc1+ 31.Kh2 Rfc8 32.Qa7 R1c6 33.Be5 f6 34.Bd4 b4 35.Qb7 a5 36.Qb5 Rc4 37.Qd5+ Kf8 38.Qd6+ Kg8 39.Qd5+ Kh8 40.Bb2 a4 41.Qd3 Rc2 42.Qd4 a3 43.Ba1 b3 44.Qa4 b2 45.Qxa3 b1Q 46.Bd4 Qa2 47.Qg3 Rxg2+ 48.Qxg2 Rc2 49.Qxc2 Qxc2+ 50.Kg3 Qd3+ 51.Kg4 Qxd4 52.Kg3 g5 53.fxg5 fxg5 54.h4 Qf4+ 55.Kg2 g4 56.h5 Qf3+ 57.Kg1 g3 58.h6 Qf2+ 59.Kh1 Qh2# 0-1

**Rory Wasiolek - Michael Opaska [A00]**

PSCF Scholastic K-12 Open (3), 08.03.2003

1.e3 Nf6 2.f4 g6 3.b3 Bg7 4.Bb2 d6 5.Nf3 0-0 6.Nc3 Nbd7 7.Bd3 c6 8.Qe2 Nc5 9.0-0-0 b5 10.Qf2 a5 11.Ng5 a4 12.b4 Nxd3+ 13.cxd3 c5 14.bxc5 dxc5 15.Kc2 b4 16.Ncc4



16...b3+ 17.axb3 axb3+ 18.Kxb3 Qxd3+ 19.Nc3 Nd5 20.Qf1 c4# 0-1

**Ross Weissman - Dmitri Goldenberg [C02]**

PSCF Scholastic K-12 Open (1), 08.03.2003

1.e4 e6 2.d4 d5 3.e5 c5 4.c3 Qb6 5.Nf3 Bd7 6.a4 cxd4 7.cxd4 Bb4+ 8.Nc3 Nc6 9.Be3 Nge7 10.Bd3 Rc8 11.0-0 h6 12.Rb1 Na5 13.Na2 Nc4 14.Nxb4 Qxb4 15.Bxc4 Qxc4 16.b3 Qa6 17.Rc1 0-0 18.Qd2 Nf5 19.Bf4 Kh7 20.g4 Ne7 21.g5 h5 22.Nh4 g6 23.Be3 b6 24.Rc2 Rxc2 25.Qxc2 Rc8 26.Qd2 Qb7 27.Rc1 a5 28.Rxc8 Qxc8 29.Qc1 Qb7 30.Qa3 Bc8 31.Bd2 Kg7 32.Qd6 Nc6 33.Nf3 b5 34.axb5 Qxb5 35.Be3 Ba6 36.Nd2 Qb7 37.Qc5 Bd3 38.Qc3 Qb5 39.Qc5 Qxc5 40.dxc5 d4 41.Bf4 Kf8 0-1

In non-Bloomsburg news, the Philadelphia Junior Invitational is being revived, and will be played in early May. The contestants will be Zack Tokar, Rory Wasiolek, Mike Guber, Adrian Benton, Dmitry Goldenberg, Eric Augenbraun, Gage Caligaris, and Maurice Bishop. There is no entry fee, the first three places will receive cash scholarships, and the winner will be engraved on the Heisman-Shahade Trophy. (*Pittsburgh is also holding a Junior Invitational as we go to press. -Editor*)

**Bloomsburg Open** by Joseph J. Mucerino Jr.

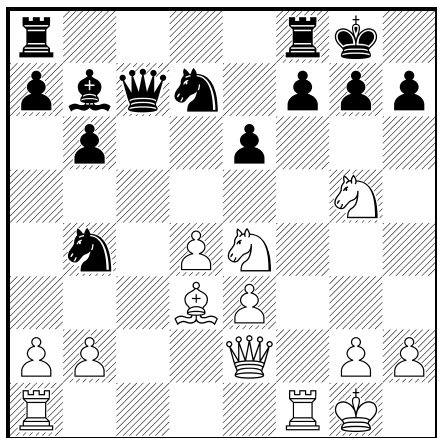
Over the weekend of March 7 and 8, the Bloomsburg Open gave the young at heart - in other words, people too old to enter a scholastic section - a chance to play some chess. A record 76 adults and college students from all over Pennsylvania took part. Due to the size of the field, accelerated pairings were used. The difference between accelerated pairings and "normal" Swiss system pairings is that instead of the top half playing the bottom half, the top quarter plays the second quarter, and the third quarter plays the fourth. The idea is to avoid the first round mismatches which frequently occur in large Swiss-system tournaments and , in effect, save a round by beginning the tournament with pairings that would normally happen in round two. This did work to an extent, although round three did see some experts and A-players play against unrateds and players with three digit ratings. Despite, or perhaps because of, the accelerated pairings, there were no major upsets in the first round.

**Joe Mucerino (1969) - Ronald Gross (1658) [A47]**

Bloomsburg Open (1), 08.03.2003

*Annotations by Joe Mucerino*

1.d4 Nf6 2.Nf3 e6 3.e3 b6 4.Bd3 Bb7 5.Nbd2 c5 6.c3 Be7 7.e4 cxd4 8.cxd4 d6 9.0-0 0-0 10.Qe2 Qc7 11.e5 Nfd7 12.exd6 Bxd6 13.Ne4 Bf4 14.Be3 If 14.Bxf4 Qxf4 and Black's Queen is on a good square. 14...Bxe3 15.fxe3 The other reason for 14.Be3 is that after this exchange I have an open line for my Rook and two center pawns. 15...Nc6 16.Nfg5 This is better than 16.Neg5 because it clears the f-file for my Rook and allows my Queen to go to h5. The Knight on e4 also covers the f6 square. 16...Nb4



17.Rac1? Poor. The best move is 17.Qh5 , but I couldn't get it to work at the board. The analysis of this move is a bit long, but worth looking at: **A)** 17...Rfe8 18.Rxf7; **B)** 17...h6 18.Rxf7 **B1)** 18...Nf6 19.Nxf6+ Kh8 (19...gxf6 20.Qg6+) 20.Qg6; **B2)** 18...Nxd3 19.Rxg7+! Kxg7 (19...Kh8 20.Qxh6#) 20.Nxe6+ Kh7 21.N4g5+ and mates in two.; **B3)** 18...Rxf7 19.Qxf7+ Kh8 20.Nxe6; **B4)** 18...Bxe4 19.Rxg7+ Kxg7 20.Nxe6+ Kh7

21.Bxe4+ and mates in two.; **B5)** 18...hxg5 19.Nxg5 Rxf7 (19...Nf6 20.Rxc7 Nxh5 21.Bh7+ Kh8 22.Rxb7) 20.Qxf7+ Kh8 21.Nxe6; **C)** 17...Nf6 18.Nxf6+ gxf6 19.Qxh7#] 17...Qd8 18.Qh5 h6 19.Be4 [19.Rxf7 still is winning, for example 19...hxg5 (19...Nxd3 20.Rxg7+ Kxg7 21.Nxe6+ Kh7 22.N4g5+ Qxg5 23.Nxg5+ Kg7 24.Rc7) 20.Nxg5 Rxf7 (20...Qxg5 21.Rxf8+ Rxf8 22.Bh7+ Kh8 23.Qxg5 Kxh7) 21.Bh7+ (21.Qxf7+ Kh8 22.Qh5+ Kg8 23.Bh7+ Kf8 24.Qf7#) 21...Kf8 22.Qxf7#] 19...Qe7 [19...hxg5 20.Nxg5 Nf6 21.Rxf6 Be4 22.Rxf7 and wins.] 20.a3 Bxe4 21.Nxe4 Nd5?! This gives up a pawn, but Black probably thought he could pressure White's center and win the material back. 22.Bxd5 exd5 23.Qxd5 Rfe8 24.Rc7 Rad8 25.Nd6 Qxe3+ 26.Kh1 Re7 Black is going to lose material no matter what he tries. 27.Nf5 Qe6 28.Nxe7+ Qxe7 29.Rxa7 Qe8 30.h3 Nf6 31.Qc4 b5 32.Qc3 Ne4 33.Qf3 Nf6 34.Qf2 Kh8 35.Re1 Qc6 36.Rae7 Qd6 37.Rxf7 Ne4 38.Qf4 38.Rxe4 is good too. 38...Qxd4 39.Rf8+ Rxf8 40.Qxf8+ Kh7 41.Qf5+ 1-0

With last year's defending Champions IM Stas Kriventsov and Larry Pugh both absent, the two favorites to win the tournament were FM Rodion Rubenchik, the co-PSCF Champion, and NM Sergey Shchukin, who tied for first place in the Open section of the Liberty Bell Open (and beating me in the first round).

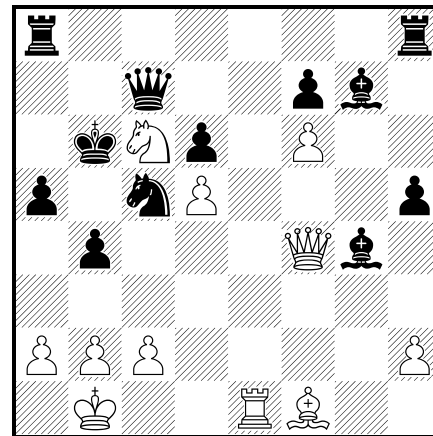
FM Rodion Rubenchik defeated Peter Minear in the last round to score a perfect 5-0 sweep, although he had to survive a sacrificial attack from Mike Glick in round two. Glick threw everything he had at Rubenchik and lost a great battle:

**Michael Glick - Rodion Rubenchik [B99]**

Bloomsburg Open (2), 08.03.2003

*Annotations by Michael Glick*

1.e4 c5 2.Nf3 d6 3.d4 cxd4 4.Nxd4 Nf6 5.Nc3 a6 6.Bg5 e6 7.f4 Be7 8.Qf3 Qc7 9.0-0-0 Nbd7 10.g4 b5 11.Bxf6 Nxf6 12.g5 Nd7 13.f5 Nc5 14.f6 gxf6 15.gxf6 Bf8 16.Rg1 16.a3!? 16...h5 17.Rg7 b4 18.Nd5 exd5 19.exd5 Bg4 20.Re1+ Kd8 21.Qf4 Kc8 22.Nc6 a5 23.Bb5?! 23.Re7 or 23.Re8+; one of these 2 is book. 23...Kb7 24.Kb1 Kb6 25.Bf1 Bxg7



26.Re7 26.Qc4!? Kb7 (26...Qd7 27.fxg7 Rhe8 28.Qb5+ Kc7 29.Re7 Rxe7 30.Nxe7 Qxb5 31.Bxb5 f5 32.g8Q Rxg8 33.Nxg8) 27.Re7 Bd7 28.fxg7 **A)** 28...Rhe8 29.Qe2 (29.Qb5+ Qb6 30.Qe2 Rg8 31.Rxf7 Rae8 32.Qf2) 29...Rg8 30.Rxf7 Rae8 31.Rxd7 (31.Qf2 Ka8) 31...Rxe2 32.Rxc7+ Kxc7 33.Bxe2 Rxg7; **B)** 28...Rhg8 29.Rxf7 Rae8 30.c3 Re1+ 31.Kc2 26...Bh6 27.Qc4 Qxe7 28.fxe7 Bd7 29.a3 bxa3 30.bxa3 Kc7 31.Ka2 a4 32.Ne5

**Bg7 33.Nxf7 Rhb8 34.c3 Rb6** and Black went on to win **0-1**

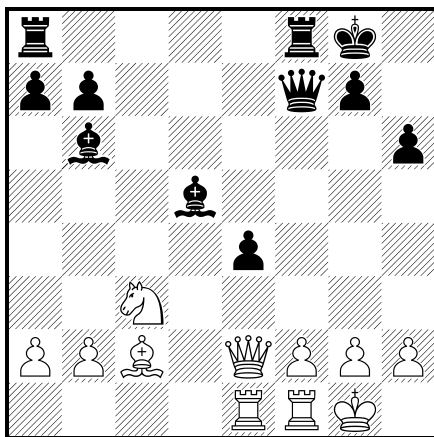
In the final round, Patrick Walker, in top form, won against Rob Nicholson and finished in clear second a half-point behind Rubenchik. (Don't say you were lucky Pat, I was watching!) Five players tied with four points: Marty Frank, Sergey Shchukin, Michael Glick, Phil Rizzo, and Joe Mucerino. The top U1800 were Ari Oxman, James Joline, and Gordon Clapp, all with 3.5 points. The best unrated, Isaac Erskine, had the same score. Three points won the U1600 prize for three players: Alex Chavez, Darrin Berkley, and Attila Fabian. Joel Christman won the U1200 prize with three points, and the same score won best U1000 honors for Nicole Solomon. Don Little scored a big 2.5 to be the best U800.

**Joe Mucerino (1969) - Matthew Russell (1766) [D05]**

Bloomsburg Open (5), 09.03.2003

*Annotations by Joe Mucerino*

Matthew Russell finished in second place in last year's National Geography Bee. Congratulations to him! **1.d4 Nf6 2.Nf3 e6 3.e3 c5 4.c3 Nc6 5.Bd3 d5 6.Nbd2 Be7 7.0-0 0-0 8.dxc5 Bxc5 9.e4 h6 10.e5?** Taking control of the e5 square is one of the main ideas in the Colle System. This move, however, does not work tactically. **10...Ng4 11.Qe2 Qc7 12.Nb3 Bb6 13.Nbd4** White's last few moves freed his dark-squared Bishop, and blocked Black's dark-squared Bishop from attacking the f2 square. **13...Ngxe5 14.Nxe5 Nxe5** Not **14...Qxe5 15.Nxc6 Qxe2 16.Ne7+ Kh8 17.Bxe2** winning a piece. **15.Bf4 f6 16.Rae1** Not **16.Nf3 Nxf3+ 17.Qxf3** and Black remains a pawn up. **16...Qf7 17.Bxe5 fxe5 18.Qxe5 Bc7! 19.Qe2 e5 20.Nb5 e4 21.Bc2 Bb6** Still looking at f2. **22.c4** Trying to break up Black's center pawns. **22...Be6 23.cxd5 Bxd5 24.Nc3**



**24...Be6??** Black had two alternatives: **24...Bxa2 25.Nxa2 Qxa2 26.Qxe4 Rf6** and Black's better.; **24...Bc4 25.Qxe4** threatens mate **25...Qxf2+ 26.Rxf2 (26.Kh1?? Qxf1+ 27.Rxf1 Rxf1#) 26...Bxf2+ 27.Kh1 Bxe1 A) 28.Qxc4+ Kh8 (28...Rf7 29.Qe2 Bxc3 30.bxc3** and White's better) **29.Qd3** again threatening mate (**29.Qe4 Kg8 30.Qxe1**) **29...Kg8** and White has an advantage in material; **B) 28.Qxe1? 28...Rf1+ 29.Qxf1 Bxf1** and Black is up an exchange. **25.Bb3 1-0**

**Curtis Kramer (1824) - Joe Mucerino (1969) [D04]**

Bloomsburg Open (2), 08.03.2003

*Annotations by Joe Mucerino*

**1.Nf3 d5 2.d4 Nf6 3.e3 Bg4 4.Bd3 e6 5.Nbd2 c5 6.b3 Nc6 7.c3?! 7.Bb2** is better. **7...Bd6 8.Bb2 0-0 9.h3 Bh5 10.Qc2 cxd4**

**11.exd4** If **11.cxd4 Nb4** will trade off White's strong light-squared Bishop. **11...e5** Trying to open lines with White's King in the center. **12.dxe5 Re8 13.0-0 Nxe5 14.Nxe5 Bxe5 15.Rfe1 Rc8 16.Bf5 Rc6 17.Qd3 g6!? 18.g4 gxf5 19.gxh5 Ne4 20.Nxe4?! Straightening out Black's pawns can't be good. 20...fxe4 21.Qe3 Qh4 22.Kh1 Qxh5 23.Rg1+ Rg6 24.Rxg6+ Again, White is kind enough to straighten out Black's pawns. 24...hxg6 25.Rg1 Kg7 26.Qg5?? This is too generous. 26...Qxh3# 0-1**

**GM Gennady Zaitchik Wins 2003 Philadelphia Chess Championship**

Thanks to Main Line CC (MLCC) President Dr. John F. Bayley, the Philadelphia Championship was revived as an open tournament in 2001. Each year it has doubled in size. This year 54 players, including a GM and two IMs, played in an elegant setting at the University of Pennsylvania (UPenn) on the final weekend of March. The UPenn Chess Club and MLCC were the co-sponsors in the event, which featured a \$750 guaranteed first prize. There were two sections, Open and U1800.

Before round three, the modern Philadelphia Chess Hall of Fame (HoF) held its annual induction ceremony. The 2003 inductee was ICCF IM and OTB FM Karl Dehmelt, who had also helped lead UPenn to the Pan-Am title in the 1970's. He joined participants FM Pete Rogers, FM Boris Baczynskyj, attendee Jim Politowski, and TD NM Dan Heisman in the HoF, along with many other inductees. The HoF's website is [http://mywebpages.comcast.net/danheisman/Main\\_Chess/Hall\\_of\\_Fame.html](http://mywebpages.comcast.net/danheisman/Main_Chess/Hall_of_Fame.html)

The first three rounds saw participants in both sections jockeying for position. Especially interesting was the U1800 section, where the B and C players fell by the wayside, leaving three 1300 (!) players at 3-0: Henry Olynik, Lamont Rogers (Pete's brother), and Craig Klein. Making this special was the fact that Henry is legally blind, a great achievement. In the Open section, GM Gennady Zaitchik was the only player at 3-0, a half-point ahead of three players: the IM pair of Stas Kriventsov and defending champion Luis Chiong of the Philippines, along with UPenn Visiting Scholar Mehmet Fehri Ercan, who was only on the boards as an "A" player although his April rating was up to expert. Also notable was defending junior champion Expert Kurt Schneider, who won the game of the round with a beautiful piece sacrifice against international junior star Alisa Melekhina (see games section). At this point Kurt's only loss was to GM Zaitchik.

In the fourth round, things started to clarify as GM Zaitchik beat IM Kriventsov in a very nice game (see games section with Stas' notes). IM Chiong won against Ercan. Those results left Zaitchik clear first at 4-0 and Chiong at 3½. Schneider won perhaps the game of the tournament against FM Baczynskyj and was joined at 3-1 with FM Rogers and FM Rodion Rubenchik. In the U1800 Olynik played Black against Klein and Rogers faced John Hanford, who was ½ point behind. Klein's victory ended Olynik's storybook run and Hanford knocked off Lamont Rogers, so they would play in the final round for all the marbles.

One race was settled quickly in the final round as GM Zaitchik, with Black, quickly settled for a draw with Chiong, securing the guaranteed \$750 first prize. IM Chiong meanwhile waited to see if any of the 3-1 players could win and split the second place money with him. On

board two Rubenchik and Rogers were battling for that right and on board three IM Kriventsov was trying to prevent Schneider, who had already clinched the Top Junior silver bowl, from joining the second place party. In the U1800 Hanford tried for a while, but they soon came to the same drawn conclusion as Zaitchik-Chiong, with Klein clinching first. Penn State PhD candidate Kriventsov won the silver bowl for Top Collegiate. The tournament was directed by National Master Dan Heisman. For further information contact Dan Heisman, 610-649-0750, danheisman@comcast.net. The complete list of prizewinners was as follows:

**Open**

1 <sup>st</sup> _____	GM Gennady Zaitchik	4½
2 <sup>nd</sup> -3 <sup>rd</sup> _____	IM Luis Chiong, FM Rodion Rubenchik	4
Top U2200 _____	Larry Pugh	3½
2 <sup>nd</sup> U2200 _____	Kurt Schneider, Ray Robinson	3
Top U2000 _____	Mehmet Ercan	3½
2 <sup>nd</sup> U2000 _____	Donald Quiring, Zack Tokar, Jacob Gurwitz	2½
Top Collegiate _____	IM Stas Kriventsov	3½
Top Junior _____	Kurt Schneider	3

**Under 1800**

1 <sup>st</sup> _____	Craig Klein	4½
2 <sup>nd</sup> -3 <sup>rd</sup> _____	Mark Chanel, Jonathan Phillips, Lamont Rogers, John Hanford	4
Top U1600 _____	Jonathan Phillips	4
2 <sup>nd</sup> U1600 _____	Roman Valerstein	3½
Top U1400 _____	Lamont Rogers and John Hanford	4
2 <sup>nd</sup> U1400 _____	Henry Olynik	3

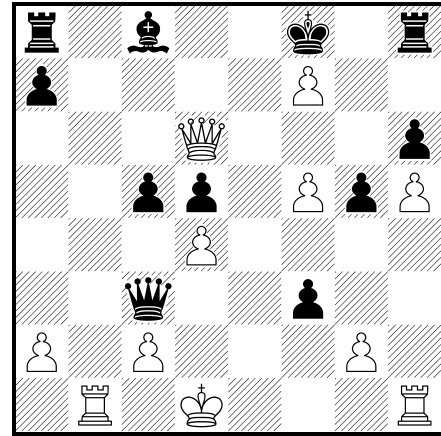
**Boris Baczynskj - Kurt Schneider [C12]**

Philadelphia Championship (4), 30.03.2003

*Annotations by Kurt Schneider*

**1.e4 e6 2.d4 d5 3.Nc3 Nf6 4.Bg5 Bb4** The McCutcheon Variation, one of the sharpest lines in the French **5.e5 h6 6.Bd2 Bxc3 7.bxc3 Ne4 8.Qg4** If White doesn't play here then Black won't have many problems in the opening **8...g6 9.h4** Normally Bd3 is played here first **9...Nxd2 10.Kxd2 c5** If White now played Bd3 then the game would transpose into a main line but instead White goes all out for the attack on the Queenside. This forces me to try to breakthrough on the Queenside as fast as possible. **11.h5 g5 12.f4** This plan is not good most of the time because Black's counter-attack is often more dangerous than White's attack. **12...Nc6 ...Qa5** was also possible **13.Bb5** 13.fxg5 is more consistent with White's previous play. 13...Qa5 14.g6 is the only move to continue the attack 14...cxd4 15.gxf7+ Kf8 and I believe that Black has better chances **13...cxd4 14.Bxc6+ bxc6 15.cxd4 c5?** This is a mistake because I had a better choice here: 15...Qa5+! 16.c3 Rb8 (I missed this idea in the game) 17.Rh3 Rb2+ 18.Ke1 Ba6 and Black's attack is much faster than White's. **16.Nf3 f5!?** I lose some cover on the Kingside but I do take a bite out of White's center with this move. I could play 16...Qa5+ as mentioned above but it isn't as effective now. Then White has 17.c3 Rb8 18. Rhc1 but Black is probably still better. **17.exf6 e5 18.f7+ Kf8** I can't take because of 19.Nxe5+ **19.f5 Qa5+ 20.Kd1 Qc3 21.Rb1 e4?! 22.Qg3!** This is White's only move, but I didn't

see it and it came as quite a surprise **22...exf3** There are no checks and no defenses so this is the only choice **23.Qd6+**



**23...Kg7?** This move actually allows a forced mate, but fortunately my opponent didn't see it **24.Qe5+ 24.f6+!** mates me: 24...Kh7 25.f8N+ Kg8 26.Qxd5+ Kxf8 27.Qd8+ Kf7 28.Qe7+ Kg8 29.Qg7# **24...Kxf7** forced. 24...Kh7 loses immediately to 25.Qxh8+ Kxh8 26.f8Q+ **25.Qxh8 fvg2** Beforehand I thought I had the move Bxf5 here but then I realized that Rb7 would then win immediately for white. **26.Qh7+ Ke8** With this move I offered a draw. After the game my opponent said that the draw offer confused him. **27.Re1+?** This move was played very quickly, in such a complex position every move must be taken very seriously. **27...Qxe1+** This is the only move that doesn't get me mated in short order. However, the move is a fine move indeed! **28.Kxe1 g1Q+** Now I am winning **29.Kd2 Qf2+ 0-1**

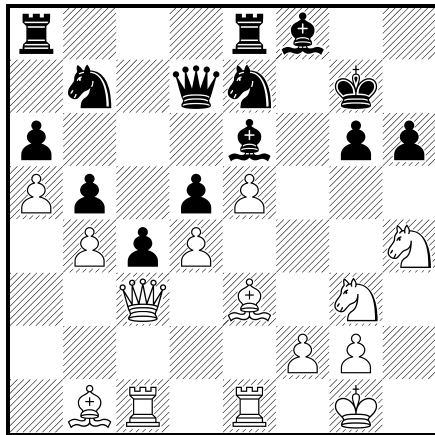
**Kurt Schneider - Alisa Melekhina [C93]**

Philadelphia Championship (3), 29.03.2003

*Annotations by Kurt Schneider*

**1.e4 e5 2.Nf3 Nc6 3.Bb5 d6 4.d4** This is the Old Steinitz Defense, a slightly passive but very solid system. **4...Bd7 5.c3 Nc3** is more common even though it gives up the possibility of creating the nice two-pawn center **5...Nf6 6.0-0 a6 6...Nxe4** should always be considered when the e4 pawn is hanging. If 7.Re1 f5 8.dxe5 dxe5 (8...Nxe5 9.Nxe5 Bxb5 10.Qh5+ g6 11.Nxg6 winning) 9.Nbd2 Nxd2 (9...a6 10.Bc4 Nxd2 11.Nxe5 Nxe5 12.Rxe5+ very close to winning for White) 10.Nxe5 Nxe5 11.Rxe5+ Be7 12.Bxd2. **7.Ba4 b5 8.Bb3 Be7 9.Re1 0-0 10.h3** Now we have transposed into a line of the closed Ruy Lopez where White should be slightly better due to the inflexibility of Black's bishop on d7. **10...Re8 11.Ng5 Rf8 12.Nf3** I always play this to see what my opponent will do. This doesn't mean that White is looking for a draw. **12...h6** This is the point of my play. Black either must play here if a draw isn't wanted or not play Re8 yet. **13.Nbd2 Re8 14.Nf1 Bf8 15.Ng3 g6** This weakens Black on the Kingside but it does keep a Knight out of f5 and prepare a spot for Black's bishop **16.Qd3 Na5 17.Bc2 Kh7?!** I'm not sure what this move does for Black. The King was guarding f7. I take advantage of this with my next move. **18.b4 Nb7 19.a4 c6 20.a5** White has made significant progress by gaining space on the Queenside. Now White can proceed with Kingside play after the c5 idea is dealt with. **20...Qc7 21.Be3 c5 22.Rac1** 22.bxc5 may have been better. After 22...dxc5 23.Nxe5 White will be better because of his central control but he will lose the a5 pawn. **22...exd4!?** I had missed this move; however, I believe that White

may still be better. **23.cxd4 c4 24.Qc3 d5** Without this move Black has no pressure on the b4 pawn. I was also threatening to play d5 which would permanently kill the b7-knight. **25.e5 Ng8 26.h4** I get my Kingside play rolling before Black can start anything on the Queenside **26...Kg7 27.h5 Be6?** This move takes the e6 square from the b7 Knight and it stops the potential Qc6 guarding g6. After this move my attack grows to quite frightening proportions. **28.Bb1** Preparing for a later Qc2 bringing another attacker to g6. **28...Ne7 29.Nh4** I am now threatening to play Qc2 and there is no way for Black to get another defense to g6. **29...Qd7** This move prepares to counter Qc2 with Bf5 **30.hxg6** However I had another idea. If **30.Qc2 Bf5 31.Nhxf5+ Nxf5 32.Nxf5+ Qxf5 33.Qxf5 gxf5 34.Bd2 Nd8** and Black is fine because now my Queenside weaknesses will hurt **30...fxg6**



Here, I had a choice of three tempting moves. **31.Nxg6!** **31.Bxg6!** is perhaps the best move because it avoids some of Black's tricks, however it is very similar to the move in the game. **31...Nxg6 32.Nh5+ Kf7 33.Qc2 Bf5 34.Nxf5;** **31.Qd2** This move won a pawn by force **31...Kh7 32.Nh5 Bg7 33.Nxg7 Kxg7 34.Bxh6+ 31...Nxg6 32.Nh5+ Kf7** Forced as after Kh7 I have Nf6 with a family fork. **33.Nf6 Qc8!** Black finds the best defense as my threat was Qc2. For example, other moves such as **33...Qc7** lose right away: **34.Qc2 Ne7 35.Qh7+ Bg7 36.Bxh6 Rg8 37.Re3** and Black has now defense to the numerous threats. **34.Bd2!!** This move is by far the best move in the position. It quietly prepares to bring the queen into the attack and it also defends b4 which is useful in many lines. After **34.Qc2 Bf5 35.Qxf5 Qxf5 36.Bxf5 Bxb4** it may be black who has the advantage! **34...Be7** This move loses but it is hard to suggest a way for Black to untangle. **34...Bf5** perhaps is Black's best chance as after **35.Qf3 Bxb1 36.Rxb1** at least Black gets my killer bishop, but White is still much better. **35.Qf3 Kg7** The only move that gets out of the discovery however White has more tricks **36.Bxh6+ Qh5** mated in seven according to Fritz but this wins as well and it is pretty **36...Kh8 37.Bxg6** Now the game is over as I am up material and still retain all my other advantages **37...Rf8 38.Bxf8 Bxf8 39.Qh5+ Kg7 40.Qh7# 1-0**

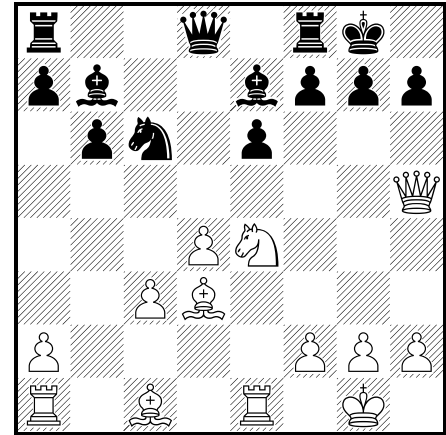
**GM Gennady Zaitchik - IM Stanislav Kriventsov [D41]**

Philadelphia Championship (4), 30.03.2003

Annotations by IM Stanislav Kriventsov

**1.Nf3 Nf6 2.c4 c5 3.Nc3 Nc6 4.e3** Last year he played 4. d4 against me, and I got a good position after the opening. **4...d5**

**5.d4 e6 6.cxd5 Nxd5 7.Bc4 cxd4 8.exd4 Nxc3 9.bxc3 Be7 10.0-0 0-0 11.Re1 Bf6 12.Bd3 b6 13.Nd2!** Looks like a strong novelty, unless there are some games I don't know about. **13. h4** happened twice, with a draw in both cases **13...Bb7 14.Ne4 Be7 15.Qh5**



**15...g6 15. ... f5** might have been better, but black's position after **16. Ng5 Bxg5 17. Bxg5** is hardly enviable; immediate **15. ... Qd5?** is bad in view of **16. Nf6+!** **16.Qh6 Qd5 17.Ng5 Bxg5 18.Bxg5 f5** Maybe **18. ... Nxd4!?** **19. Be4 Qxe4!** **20. Rxe4 Bf5**, which I saw, but decided against it, was the best chance. **19.Bf1 Rf7 19. ... e5 20. c4! Qxd4 21. Rad1** and **22. Rd7 20.Re3 e5** An attempt to free myself, which loses by force. Zaitchik only had about 6 minutes left at this point until move 30, but he is amazingly good in time trouble. **21.dxe5 Nxe5 22.Rae1 Nd7 23.Re7 Raf8 24.Rxf7 Rxf7 25.Re8+ Rf8 [25...Nf8 26.Be7] 26.Bf6 Qf7 27.Bc4! 1-0**

**Joe Mucerino - Boris Baczynskij [B06]**

Philadelphia Championship (1), 29.03.2003

**1.d4 g6 2.e4 Bg7 3.f4 d5 4.e5 Nh6 5.Nf3 Bg4 6.Be2 e6 7.0-0 Nf5 8.b3 c5 9.c3 Qb6 10.dxc5 Qxc5+ 11.Kh1 Nc6 12.Qd3 h5 13.Na3 h4 14.Ng1 Bxe2 15.Nxe2 a6 16.Nc2 f6 17.Ncd4 Kf7 18.Nxf5 gxf5 19.Be3 Qa5 20.exf6 Bxf6 21.Nd4 h3 22.g3 Rac8 23.b4 Qa4 24.Nb3 Qb5 25.Qd2 d4 26.Nxd4 Nxd4 27.Bxd4 Rh8 28.Rad1 Bxd4 29.cxd4 Rxd4 30.Qf2 Qd5+ 0-1**

**Joe Mucerino - Norman Rogers [A48]**

Philadelphia Championship (2), 29.03.2003

**1.d4 Nf6 2.Nf3 g6 3.Bg5 Bg7 4.e3 c5 5.c3 0-0 6.Nbd2 d5 7.Be2 Nc6 8.0-0 Qb6 9.Qb3 c4 10.Qa3 h6 11.Bxf6 Bxf6 12.b3 cxb3 13.axb3 e5 14.dxe5 Nxe5 15.Rac1 Bf5 16.Nxe5 Bxe5 17.Nf3 Bd6 18.Qa4 Rfd8 19.Rfd1 Rac8 20.Nd4 Bd7 21.Qa2 Bb8 22.Bf3 Qd6 23.g3 Bh3 24.Qd2 Qf6 25.Bh1 h5 26.Qe2 Be5 27.Qb5 b6 28.Qd3 h4 29.Bg2 Bxg2 30.Kxg2 Kg7 31.Qe2 Rh8 32.Qg4 hxg3 33.hxg3 Rh2+! 0-1**

**J. Johnson - Joe Mucerino [B01]**

Philadelphia Championship (3), 29.03.2003

**1.e4 d5 2.exd5 Nf6 3.d4 Bg4 4.Be2 Bxe2 5.Nxe2 Qxd5 6.0-0 Nc6 7.b3 0-0-0 8.c4 Qh5 9.Nbc3 e6 10.Bf4 e5 11.Bg3 Nxd4 12.Nxd4 Qxd1 13.Raxd1 exd4 14.Nb5 c5 15.Nxa7+ Kd7 16.b4 Ra8 17.Nb5 b6 18.bxc5 bxc5 19.Rd2 Ne4 20.Rc2 Be7 21.Be5 Bf6 22.Re2 Bxe5 23.Rxe4 Bf6 24.Re2 Rhe8 25.Rc2 Kc6 26.Rd1 Rad8 27.g3 Rd7 28.Rd3 Re1+ 29.Kg2 Bd8 30.Kf3 Rde7 31.Ra3 Rb1 32.Rb3 Rxb3+ 33.axb3 Ba5 34.Ra2 Bb6 35.h4 h6 1/2-1/2**

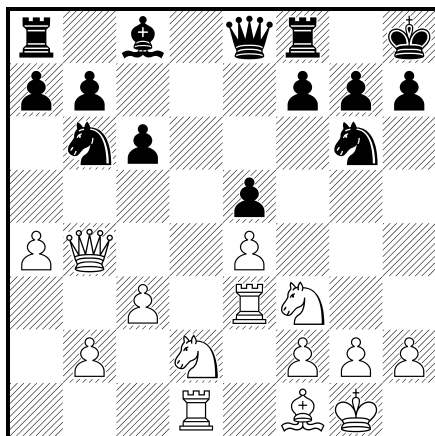
**ALEX'S COLUMN**

By FIDE-Master Alex Dunne

Alex Dunne (2250) - Sean Lourette (2025) [C65]

Rochester (2), 2003

1.e4 e5 2.Nf3 Nc6 3.Bb5 Nf6 4.d3 Sean is a young expert, well-booked in this ancient-modern line after 4. 00 Nxe4 as in Kasparov-Kramnik. But White chooses a line right out of Anderssen-Steinitz, London 1866. 4...Bc5 5.0-0 d6 6.c3 Bb6 Hernandez-Dunne, Correspondence 1988: 6...00 7. d4 Bb6 8. Re1 exd4 led to a Black victory. 7.Be3 0-0 8.Nbd2 Nd7?! This retreat is weak, as it removes the pressure from White's e4 and allows him to advance in the center. Better was 8...Bd7 with approximate equality. 9.d4 Now this advance is strong. 9...Qe8 10.Re1 Kh8 Black is marking time, trying not to commit his pieces to a direct plan, but this allows White to strengthen his grip. 11.Qa4 Ne7 12.dxe5 c6 13.Bf1 dxe5 14.Rad1 The first sign that Black is in serious trouble: White is the first to arrive on the d-file and Black is in no position to oppose it. 14...Bxe3 15.Rxe3 Nb6 16.Qb4 Ng6 17.a4



17...Rb8 Black's best chance was 17...c5!? 18. Qxc5 Nxa4 when White still has the edge. 18.a5 Na8 19.Nc4 Bg4 20.h3 Bxf3 21.Rxf3 Nc7 22.Nd6 Qe7 23.g3 Depriving the g6 Knight of kingside squares and preparing h4-h5 to win it. 23...b6 24.axb6 axb6 25.Be4! White declines to win a Pawn by 25. Qc4 Ne6 26. Qxc6 in favor of larger game. 25...f6 26.h4 c5 27.Qb3 b5 28.Nf7+ Rxf7 Sean capitulates, but also losing was 28...Kg8 29. Nd8+ Kh8 30. Nc6 bxc4 31. Qxb8 Rxb8 32. Nxe7 Nxe7 33. Rd7 with a crushing game. 29.Bxf7 c4? Missing the point. 30.Bxc4 Na6 31.Bf1 Nc5 32.Qb4 Qc7 33.Rd5 1-0

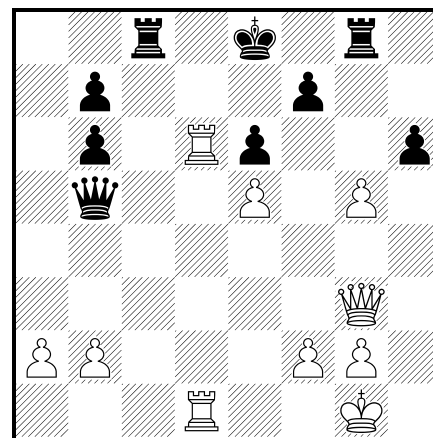
**BRUCE LEVERETT ANNOTATES...**

Michael Opaska - Ryan Milisits [B22]

PSCF Junior Championship (2), 02.11.2002

1.e4 c5 2.Nf3 e6 3.d4 cxd4 4.c3 Nf6 4 ... dxc3 would be the Morra Gambit. The text transposes to a variation of the Alapin Sicilian (1 e4 c5 2 c3 Nf6 etc.). 5.e5 Nd5 6.cxd4 Nc6 The most flexible move here is 6 ... b6. 7.Bc4 Nb6? 7 ... d6 would transpose to an old main line: 8 O-O Be7 9 Qe2 O-O 10 Nc3 Nxc3 11 bxc3 b6 (or 11 ... dxe5), etc. The text makes it harder for Black to develop his queen bishop. The move ... Nb6 makes more sense when Black hasn't already shut in the bishop, as in some other well-known variations: 1 e4 c5 2 c3 Nf6 3 e5 Nd5 4 d4 cxd4 5 Nf3 Nc6 6 Bc4 Nb6 7 Bb3, or 6 cxd4 d6 7 Bc4 Nb6 8 Bb5. 8.Bb5 Be7 9.0-0 d6 10.Nc3!? [10.Qe2!] 10...dxe5 11.dxe5

Bd7?! Returning the favor. Black's queen is only getting in the way on d8, and he should have traded it at once. 12.Bxc6?! Bxc6 13.Nd2?! I guess it's logical to follow up one baffling, incomprehensible move with another. 13...Qd4 14.Qe2 Nd7?! It's amazing if White is not busted after his 12th and 13th moves, but now Black is overreacting. Simply 14 ... O-O would leave White with the problem of untangling his minor pieces without losing material. 15.Nc4 Bd5? But now Black gets in serious hot water, by forgetting that he needs to castle. Admitting his error by 15 ... Nb6 is quite playable. 16.Nxd5 Qxd5 16 ... exd5? 17 Nd6+ 17.Rd1 Qc6 18.Nd6+ Bxd6 19.Rxd6 Qc7 20.Bf4 Rd8 This self-pin causes agony. But 20 ... O-O 21 Rc1 or 20 ... Nb6 21 Rc1 Qb8 22 Qb5+ was worse. 20 ... Nb8 21 Qg4 g6 22 Qh4 doesn't look promising either. 21.Rc1 Qb8 22.Rcd1 Or 22 Bg5 Rc8 23 Rcd1 h6 24 Rxe6+! 22...h6! 23.Qd3 Qc7 24.Qg3! g5 25.Bc1 Rc8 26.Bd2 26 h4 was also logical; White answers 26 ... Nc5 with 27 Qf3. 26...Nb6 27.Ba5! Qc5 28.Bxb6 axb6 29.h4 Qb5 30.hxg5 Rg8



31.Qf3?! 31 Qf4, threatening 32 Qf6 and 33 Rd8+, wins immediately. If 31 ... Rg6 32 Rd7 Qxd7 33 Rxd7 Kxd7 34 Qxf7+ does the job. 31...Qxe5 32.Qxb7?! 32 Rd7 first is clearer: 32 ... Rg7 33 gxh6 Rh7 34 Qg4 Qf8 35 Qh4 f6 36 Rxh7. 32...Qc5 33.b4 33 Rd7 Rxc5 34 Re7+ Kf8 35 Rxf7+ Kg8 36 Rh7 Rf8 and Black is still hanging in there. But simply 33 gxh6 looks good. 33...Qc2 34.Qxb6 Rxc5 35.Rd8+ Ke7 36.Qd6+? 36 Qb7+ Rc7 37 R8d7+ Rxd7 38 Rxd7+ Kf8 39 Rxf7+ Kg8 40 Qf3 looks good. 36...Kf6 37.Qd4+ Kg6 Black's king is safe. There are no more clear wins. 38.Rxc8 Qxc8 39.a4? Qa8 40.Qd3+ f5 41.f3 Qxa4 42.Qd6 Qb3 43.Re1 Kf7 44.Qd7+ Kf6 45.Qd4+ Kf7 46.Qd7+ Kf6 47.b5 Qa2 48.Qd4+ Kg6 49.Qf2 Qxf2+?! 49 ... Qb3 50 b6 f4 looks pretty safe. Draw agreed After 50 Kxf2 Kf6, the burden of proof would be on Black. 1/2-1/2

Micah Evans - David Tobias [A43]

PSCF Junior Tournament (3), 02.11.2002

This game is far from World Championship caliber, but it was submitted by the loser (Tobias) in hopes that it would be interesting, and indeed, it's like a lesson in basic tactics in one game. 1.d4 c5 2.c3 Nf6 3.Nf3 d6 4.e3 a6 5.Bd3 cxd4 6.cxd4 Bd7 7.Nbd2 Nc6 8.e4 e6 9.0-0 Be7 10.Re1 Rc8 11.b3 Nb4 12.Bb1 d5 13.e5 Ng4 14.h3 Nh6 15.Re3 Nf5 16.Bxf5 exf5 17.h4? Nc2! Forking the rook on a1 and the rook on e3. 18.Rd3 Nxa1 19.Ng5 Bb5 20.Rg3 h6 21.Ngf3 f4 22.Rxc7 Bf8 Black might have played 22 ... Bd7 first; then 23 ... Bf8 would have trapped the rook. 23.Rg4 Nc2 24.Rxf4 Bb4 25.e6! Bd6 Black rightly avoids

25 ... fxe6 26 Ne5 26.exf7+ Ke7 27.Rf5 Qd7 28.g4 Bd3 29.Rxd5 Kxf7? 30.Ne5+ Ke6 31.Nxd7 Kxd5 32.Nb6+ Ke6 33.Nxc8 Nxd4 Oops! If 33 ... Rxc8 34 Qf3+ wins the bishop. But the text is not much better. 34.Bb2! Be2 35.Qc1+ Kd5 36.Bxd4 Kxd4 37.Qb2+ A "skewer". 37...Kd5 38.Qxh8 Bc5 39.Qd8+ Ke5 40.Qe8+ Kd4 41.Qxe2 b5 42.Qe3+ Kd5 43.Qxh6 43 Qe4 would be mate. 43...a5 44.Qg5+ Kd4 45.Nf3+ Kc3 46.Qxc5+ Kb2 47.Qxb5 Kxa2 48.Qxa5+ Kxb3 49.Kf1 Kc4 50.Ke1 Kd3 51.Qa4 Kc3 52.Ke2 Kb2 53.Kd3 Kc1 54.Qc2# 1-0

### Martin A. Simsak 1910-2003

Martin Andrew Simsak was born September 4, 1910, in Munhall, Pennsylvania. Martin learned the game of chess at 16 from a school friend. After learning the moves, he borrowed the book of the Hastings 1895 tournament from the local library. "I was amazed at the moves those players came up with", he said. The Hastings tournament book opened Martin's eyes to the beauty and creativity of chess, and helped form his mature playing style.

Martin's first tournament was a high school event he organized himself. He then sought stronger opposition and began to frequent the Pittsburgh Chess Club. He soon developed a reputation as a "coming player." The Great Depression saw Martin, like many young men, scrambling for work. After a brief stint in Cleveland, Ohio, Martin returned to Pennsylvania to manage some family property north of Bethlehem. After moving to the property he began to explore the local Lehigh Valley chess activities.

What he found in the Lehigh Valley's twin cities of Allentown and Bethlehem was a dynamic chess community, second in playing strength only to Philadelphia among Pennsylvania chess centers, with frequent tournaments, team matches, and simultaneous displays by leading players. Just as he did in Pittsburgh, Martin began to make a name for himself in Lehigh Valley chess.

In 1939 Martin played the best move of his life, entering into "double harness" by marrying Rose Prokop. "When you go fishing", Martin told me, "you get a lot of little ones on your line, and you throw them back. But when you get a keeper, you haul it in and don't let it get away. I got my keeper." People took the vow "till death do you part" seriously in those days, and the Simsak's enjoyed 63 years of marriage before Martin's passing.

1943 saw Martin in the Navy, serving as a fire controlman and gun captain on the *US Wileman* in the South Pacific. He received two Bronze Stars for his participation in the invasions of Saipan and the Philippines. After the war, Martin joined the Bethlehem Police Department in 1946 as a motorcycle patrolman. Martin was eventually promoted to training sergeant and served as assistant public safety director before retiring in 1968. He also resumed chess playing in 1946, although his commitment to his growing family and his job always took priority. Martin frequently appeared in the local newspapers, in his policeman's uniform, holding a trophy won in a local event. USCF Senior Master Bruce Alberston, who as a young man sharpened his game in the Allentown Chess Club, described Martin as a "tough as nails cop" and as "one of the strongest players in the Valley."

In Martin's obituary in the *Allentown Morning Call* of March 10, 2003, his chess career was briefly described: "A master chess player, he won the Allentown City Championship eight times, the Lehigh Valley Open Championship four times and the Lehigh Valley Speed Championship

three times. He placed second in 1943 and third in 1961 in the Pennsylvania State Championship and won the Pennsylvania State Speed Championship in 1961. " After winning his last championship title, that of the City of Allentown in 1990, Martin was profiled in the May 1991 issue of *Chess Life* magazine in an article titled "Seven Decades of Success". Subsequently articles about his chess experiences appeared in the *Allentown Morning Call*, *The Pennswoodpusher*, *Delaware Valley Chess*, Pittsburgh Chess Club *En Passant*, *Correspondence Chess News*, and *Quarterly for Chess History*. Martin passed away in Bethlehem March 7, 2003.

### Martin Simsak - William Byland [E12]

PSCF Championship Tournament, September 4, 1943

1.d4 Nf6 2.Nf3 e6 3.c4 b6 4.Nc3 Bb7 5.Bg5 Be7 6.Qc2 d5 7.e3 Nbd7 8.Bd3 0-0 9.a3 c5 10.cxd5 exd5 11.Bf5 h6 12.h4!? Re8 13.0-0 Ne4 14.Nxe4 dxe4 15.dxc5 hxg5 16.Rxd7 Qc8 17.Nd4 Bxc5 18.Rxf7 Qb8 19.Qb3 1-0

### Charles Ivers Kalme 1939-2002

Like the rest of the chess world, we were saddened to learn of the death of former Pennsylvania State Chess Champion Charles Ivers Kalme last year in Annapolis, Maryland. For a fuller obituary of Kalme we refer the reader to Dr. Anthony Saidy's article in the April 2003 *Chess Life*. We include one of Kalme's unknown games as a tribute to him, taken from the pages of *Penn-Scratches*:

### Mahlon Cleaver - Charles Kalme [A95]

PSCF Tournament (4), 05.09.1954

1.d4 e6 2.c4 f5 3.g3 Nf6 4.Bg2 Be7 5.Nc3 d5 6.Nf3 0-0 7.0-0 e6 8.cxd5 exd5 9.Bg5 Nbd7 10.Rb1 Ne4 11.Bxe7 Qxe7 12.e3 Kh8 13.Qc2 Nb6 14.Ne5 Be6 15.b4 Rac8 16.Rfc1 Nd6 17.Qd1 Nbc4 18.Nxc4 Nxc4 19.Bf1 g5 20.Bxc4 dxc4 21.Qe2 Qf6 22.Re1 Rce8 23.Rbd1 Bg8 24.Qh5 Bf7 25.Qf3 Qh6 26.Qg2 f4 27.e4 f3 28.Qf1 Be6 29.Re3 b5 30.Nb1 Bh3 31.Qe1 Bg2 32.d5 Rf6 33.e5 and mates in three with 33...Qxh2+ 0-1 *Penn-Scratches*, October 1954

### CHESS IN CENTURIES PAST by Ross Nickel

An advantage of playing an obsolete opening is that you will probably be more familiar with it than your opponent. So when he enters an inferior line, you may comfortably follow established theory. However, the danger exists that he may improvise and you may not be able to find a refutation over the board. The game below illustrates this point.

The Ponziani Opening typically begins **1.e4 e5 2.Nf3 Nc6 3.c3 d5 4.Qa4**. The move **4. ... Bd7** is called Caro's Defense. It is not thought to be best because after **5.exd5 Nd4 6.Qd1 Nxf3+ 7.Qxf3** White should be able to hold onto the pawn by careful play. I had played such games as White and that had been my experience. And so I expected a familiar scenario when Joseph Weber entered the variation in the game below.

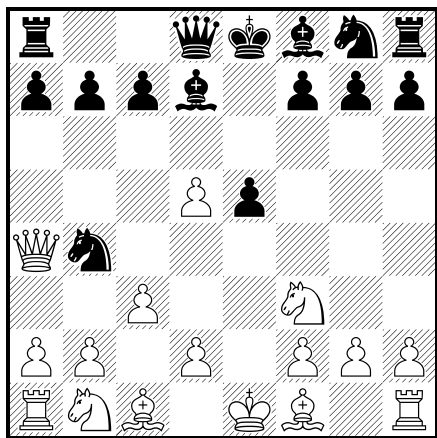
But Weber played ...Nb4 instead of ...Nd4. With thoughtful analysis, White should be able to fine a satisfactory reply. But as the clock ticked, I could only find a plan that allowed Black countermeasures. This is what Black wants out of the opening and in the ensuing slugfest Weber played energetically and prevailed.

### Ross Nickel - Joe Weber [C44]

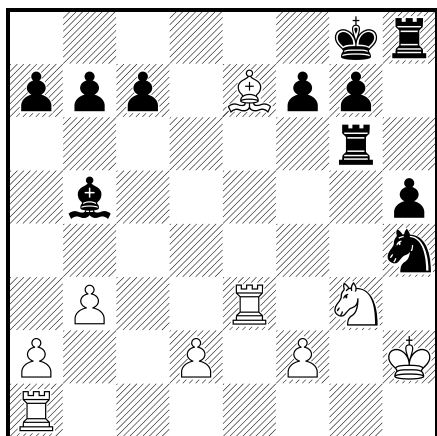
Aubury Chess Festival (3), 04.1972

**1.e4 e5 2.Nf3 Nc6 3.c3 d5 4.Qa4 Bd7 5.exd5 Nb4**





6.Qb3 e4 7.cxb4 exf3 8.gxf3 Qh4 9.Qe3+ Be7 10.Qe4 Qh5  
 11.d6 Bc6 12.d7+ Kf8 13.Qe3 Bxd7 14.Be2 Re8 15.f4 Qg6  
 16.Qg3 Qc6 17.0-0 Bh4 18.Qxh4 Rxe2 19.Nc3 Re6 20.f5 Rf6?  
 21.b5 Qf3 22.Qb4+ Ne7 23.Re1 Be6 24.Qe4 Qxf5 25.Qxf5 Bxf5  
 26.Ne4 Rg6+ 27.Ng3 h5 28.h4 Bd3 29.b3 Nf5 30.Kh2 Nxh4  
 31.Ba3+ Kg8 32.Re3 Bxb5 33.Be7



33...Rg4 34.Bd8 Bc6 35.Rc3 Nf3+ 36.Kh3 Ng5+ 37.Bxg5 Rxg5  
 38.f3 h4 39.Ne4 Rg6 40.Rc5 f5 41.Nc3 Rg3+ 42.Kh2 Rh5 43.d4  
 Bxf3 44.Rxc7 Rhg5 45.d5 Rg2+ 46.Kh3 R5g3+ 47.Kxh4 g5#  
 Clock times: 1:57-1:42 0-1

**POSTAL POTPURRI** by John Caliguire

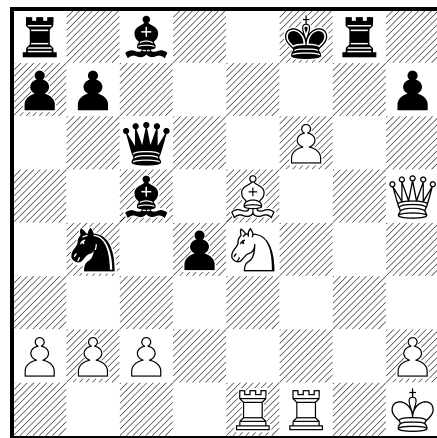
...will be back next issue. In the meantime, here is an interesting game by John, taken from the *MegaCorr 2* correspondence chess database.

**John Caliguire - Jim Bickford [C37]**

CCLA, 1997

Annotations by ICCF-IM Herbert Hickman, from *MegaCorr 2* CDROM, by Chess Mail.

1.e4 e5 2.f4 exf4 3.Nf3 g5 4.Bc4 g4 5.0-0 gxf3 6.Qxf3 Qf6 7.e5  
 Qxe5 8.Bxf7+ Kxf7 9.d4 Qxd4+ 10.Be3 Qf6 11.Bxf4 Ne7  
 12.Nc3 Nf5 13.Ne4 Qg6 14.g4 Be7 15.Bxc7 [15.Kh1 Nh4  
 16.Qe3 Kg8 17.Be5 b6! -Korchnoi] 15...d5 16.Ng3 Na6 17.gxf5  
 Qc6 18.Qh5+ Kf8 [18...Kg8 19.f6=] 19.Be5 Rg8 [19...Bf6  
 20.Rae1 Bd7 21.Bf4 Kg8 22.Qg4+ Kf7 23.Qh5+ Kg8 24.Qg4+= -  
 Hickman] 20.Rae1 Bc5+ 21.Kh1 d4+ 22.Ne4 Nb4 23.f6



23...Rg4 [23...Be6 A] 24.Bf4 Rg6 25.Qxc5+ Qxc5 26.Nxc5 Bd5+  
 27.Ne4 Re8 28.Bd6+ (28.Bg3 Nxc2 29.Re2 Ne3) 28...Kf7  
 29.Bxb4 Rxe4; B) 24.f7 24...Rg4 (24...Rg6 25.Qxh7) 25.Qxh7  
 Rxe4 26.Bg7+ Ke7 27.f8Q+ Rxf8 28.Bxf8+ Kd8 29.Rxe4 Bd5  
 30.Be7+ -Hickman] 24.Qh6+ Kf7 25.Qxh7+ Ke6 26.f7 Kd5  
 27.Bd6 Bxd6 28.Qh5+ 1-0

**President's Report** by Tom Martinak

I wanted to provide the membership with a financial summary of the PSCF. Rather than providing details about our various physical checking and savings accounts (which Treasurer Stan Booz manages to accounting standards), I wanted to provide the logical separation by how the funds are to be used. This information is as of 12/31/2002. I'm planning to include similar information for 12/31/2003 in *The Pennswoodpusher* next February, along with a summary of income/expenses producing the changes over this year. That should also allow a basic planning budget for 2004.

<b>Life Member Deferred Dues</b>	<b>\$3500.00</b>
(35 Life Members paid \$100 each)	
<b>Deferred Membership Funds</b>	<b>\$1980.00</b>
(1584 issues of our quarterly <i>Pennswoodpusher</i> based on \$1.25 each)	
<b>General Accounts</b>	<b>\$4401.60</b>
(Freely available unencumbered funds)	
<b>Restricted Postal Funds</b>	<b>\$950.24</b>
(Used for prizes and expenses of PSCF Postal Championships)	
<b>Restricted Scholastic Funds</b>	<b>\$6281.28</b>
(Used for advance expenses of the PSCF Scholastic Championship)	
<b>Total Assets</b>	<b>\$17113.12</b>

Due to family problems, I haven't been able to do as much as I had hoped this year. My primary goal for the 2<sup>nd</sup> year of my term is to continue formalizing the processes and activities of the PSCF. In particular, I am looking for volunteers to help in setting our goals/standards/requirements for our various championship events and then help in organizing and running these events. We are also hoping to add an additional annual publication concerned with history and information about the PSCF. This would go to all current membership, but could also be used in the recruitment of new members.

I will be moving at the end of July to 549 13<sup>th</sup> Avenue, New Brighton PA 15066-1208. That, as well as my current address in Pittsburgh, can be used until then. I will include a new phone number in the next issue of PWP. Until the end of July messages can be left at 412-681-7590, but in general I recommend contacting me by email at [martinak\\_tom\\_m@hotmail.com](mailto:martinak_tom_m@hotmail.com)

## UPCOMING PSCF EVENTS

**June 21. PSCF Camp Hill Quads.** 3-RR. G/60. Cleve J Fredericksen Library, 100 N 19th St., Camp Hill PA 17011-3900. **EF:** \$20, PSCF required \$5 OSA. \$\$ 50 to 1st in each quad. Reg 9-9:45am. Rd 1 at 10am. **Info/Directions:** Marvin Wilson (h) 717-975-2895 pennnews@aol.com (w) 717-605-3672 mwilson@daps.dla.mil **Director:** Dr. Ira Lee Riddle, 215-674-9049, iralee@aol.com (Note: A scholastic section will be added if entries warrant.) W.

**July 11. 2003 Pennsylvania Family Bughouse Championship.** G/5. William Pitt Union, Univ. of Pittsburgh, 5th Ave. & Bigelow Blvd., Pittsburgh PA 15213. **EF:** \$10/team postmarked by 7/3, \$15 later, PSCF required for at least one teammember \$5 OSA, Teams may consist of from 2 to 4 family members, each teammember must play at least one game, each round one adult and one child must play as a team (adult vs adult, child vs child) **Prizes:** Trophy to top team, Medallions to all members of top 7 teams. Reg ends 6:45pm. 1st Round 7pm. **Info:** 412-681-7590. **Ent:** PSCF, c/o Tom Martinak, 549 13th Avenue, New Brighton PA 15066-1208. Checks payable to PSCF. W.

**A Heritage Event**

**July 11 - 13 or 12 & 13 GPP:10 Pennsylvania 2003 Pennsylvania State Championship.** 5-SS. 30/80, SD/1 (2-day option, rd 1 G/60). Assembly Room, William Pitt Union, Univ. of Pittsburgh, 5th Ave. & Bigelow Blvd., Pittsburgh PA 15213. \$\$ (2510 b/90, two-thirds guaranteed). 4 sections: **Open**, open to all: \$\$ 500-250, U2200 \$140. **Premier**, open to U2000: \$\$ 300-100, U1850 \$140. **Reserve**, open to U1700: \$\$ 300-100, U1550 \$140. **Booster**, open to U1400: \$\$ 300-100, U1200 \$140. Unrateds may not win over \$125 in U2000, \$100 in U1700, or \$75 in U1400. Trophies to Top PA resident & Top PA Junior in each section. **EF:** 3-day \$40, 2-day \$39 postmarked by 7/3, all \$49 later, PSCF required \$5 OSA. Re-entry: \$20. **3-day schedule:** Reg ends Fri 6:30pm, Rds Fri 7pm, Sat Noon - 5pm, Sun 11am - 4pm. **2-day schedule:** Reg Sat 9-9:15am, 1st Round 9:30am, then merges with 3-day. Bye: 1-5, rds 4 & 5 must commit before rd 2. **Info:** 412-681-7590. **Ent:** PSCF, c/o Tom Martinak, 549 13th Avenue, New Brighton PA 15066-1208. Checks payable to PSCF. W. FIDE.

**July 13. 2003 Pennsylvania State Championship Scholastics.** 5-SS. G/40. Ballroom, Main Floor, William Pitt Union, Univ. of Pittsburgh, 5th Ave. & Bigelow Blvd., Pittsburgh PA 15213. **EF:** \$10 postmarked by 7/3, \$20 later, PSCF required \$5 OSA. 3 sections: **Premier**, open to U1100 & unrated in grades 9 to 12. **Reserve**, open to U900 & unrated in grades 6 to 8. **Booster**, open to U700 and unrated in grades K to 5. **All:** Trophies to top 7 in each section, additional medallions; Teams of 4 to 7 players combined from all scholastic and adult multi-day sections, Trophies to top 3 schools & top 3 clubs. Reg ends 11:30am. Rds Noon - 1:30pm - 3pm - 5pm - 6:30pm. **Info:** 412-681-7590. **Ent:** PSCF, c/o Tom Martinak, 549 13th Avenue, New Brighton PA 15066-1208. Checks to PSCF. W.

**September 20 & 21. 2003 Pennsylvania State Senior Championship.** 4-SS. G/120. Main Line Speech, 626 Haverford Road, Haverford PA 19041. Additional parking available at Rt 100 Train Station, 50 yards south. **Open to ages 50 & Up.** \$\$ (660 1st guaranteed, others b/30): 250-125-75, U1800 \$50, U1600 \$50, U1400 \$50, Ages 65 & Up \$60. **EF:** \$25 received by 9/10, \$35 after, PSCF required \$5 OSA. Reg 9:15 - 10am. Rds 10:30am - 3:30pm, 10am - 2:30pm. **HR:** Hotel Radner 610-688-5800. **Info:** 610-649-0750, danheisman@comcast.net. **Ent:** Dan Heisman, 1359 Garden Road., Wynnewood PA 19096-3626.

## PSCF GOVERNANCE

PSCF Webpage address: <http://www.pscfchess.org/>

## PSCF OFFICERS:

President: Tom Martinak; 549 13<sup>th</sup> Ave; New Brighton 15066-1208; martinak\_tom\_m@hotmail.com  
 Vice-President - East: Dr. Ira Lee Riddle; 400 Newtown Road; Warminster 18974; 215-674-9049; iralee@aol.com  
 Vice-President - Central: Greg Vaserstein; 1152 Smithfield Cir; State College 16802; gv07@hotmail.com  
 Vice-President - West: Bob Dudley; 107 Crosstree Rd.; Moon Township 15108; bgdudley@compuserve.com  
 Secretary: Brian Sheinfeld; 1014 S Waterford Way; Mechanicsburg 17050; sheinee@hotmail.com  
 Treasurer: Stan Booz, CPA; 252 W Swamp Rd, Suite 39; Doylestown 18901; 215-345-6651; stanbooz@comcast.net  
 Scholastic: Steve McLaughlin, 2745 Pershing Ave; Abington 19001-2202; 215-784-5938; zugzwang1@erols.com  
 Western PA Schol. Coordinator: Bob Ferguson; 140 School St.; Bradford 16701; 814-368-4974; amchess@amchess.org  
 SouthEastern PA Schol. Coordinator: Dan Heisman; 1359 Garden Rd.; Wynnewood 19096; 610-649-0750; danheisman@comcast.net  
 Philadelphia Schol. Coordinator: Steve Shutt; 871 N Woodstock St.; Philadelphia 19130-1439; 215-978-6867; steevs@earthlink.net  
 PSCF Historian: Neil Brennen; chessnews@mindspring.com

## PSCF Life Members:

Howard Bogus, Stanley N. Booz, Greg Borek, Al Breaux, Jr., John Caliguire, Will Champion, Natal Carabello, Steve Coladonato, Donald H. Conner, Mike Cox, Frank Cunliffe, Leroy Dubeck, Bob Dudley, Alex Dunne, Roy C. Eikerenkoetter, Robert Ferguson, Ryan Ferguson, Peter Fleischer, John Gibbons, Dan Heisman, Phillip Holmes, Joe Johnson, James Joline, Keith Kuhn, Tom M. Martinak, Allan Messinger, Glenn R. Mohler, Randy Moyer, Joseph Mucerino, William Nast, Ross Nickel, Ira Lee Riddle, Stanley Robertson, Michael Shahade, Richard Stoy, Mike Styler

## USCF Delegates:

Ira Lee Riddle, Dan Heisman, Eric Johnson, Tom Martinak, Alex Dunne

## USCF Alternate Delegates:

Tom Magar, Bob Ferguson, Stas Kriventsov, Ed Formanek, Norman Rogers, Stan Booz, Delbert Tyler, Greg Vaserstein, Michael Cox, Robert Ross, Michael Schneider, Ed McKenney, Bob Dudley, Larry Pugh, Keith Kuhn, Steve McLaughlin

Thank you for a recent donations to the PSCF by:

Lee Ellis, Peter Fleischer, Bart McAllister & Dan Robnett

*The Pennswoodpusher* is the official quarterly publication of the Pennsylvania State Chess Federation. Advertising rates available on request. Editor is Neil Brennen; 439 East Marshall Street, Apartment 4; Norristown, PA 19401 chessnews@mindspring.com

Material in this publication may be reprinted by other magazines as long as credit is given to both the author and to *The Pennswoodpusher*. The PSCF is a 501(c)(3) non-profit organization, and donations are deductible to the extent allowed by law.

Dues are \$5 for students/adults/clubs, \$100 for Life memberships.

Address Corrections & PSCF Memberships should be sent to: Tom Martinak; 549 13<sup>th</sup> Ave; New Brighton PA 15066-1208; martinak\_tom\_m@hotmail.com

PSCF EVENT CROSTABLES

2003 Pennsylvania Open Team and Scholastic Team Championships - West
February 1 & 2, 2003

Open Team Standings

Table with 11 columns: #, Name, Rtnng, Team, Rd 1, Rd 2, Rd 3, Rd 4, Match, Game, Prize. Rows include Carnegie Mellon, Pitt 1, Roadkill, Punxsutawney Phil-idors, Phalanx, etc.

Scholastic Reserve Team Standings

Table with 11 columns: #, Name, Rtnng, Team, Rd 1, Rd 2, Rd 3, Rd 4, Rd 5, Match Game, Prize. Rows include North Pittsburgh HS C, North Pittsburgh HS A, Southern Knights, etc.

Open Individual Standings

Table with 10 columns: #, Name, Pre Rat, Post Rat, Team, Rd 1, Rd 2, Rd 3, Rd 4, Total. Rows include Donald J Meigs, Sergey A Shchukin, Jeffrey L Quirke, etc.

Table with 10 columns: #, Name, Pre Rat, Post Rat, Team, Rd 1, Rd 2, Rd 3, Rd 4, Total. Rows include Russell Schuh, Herbert Barry, Nicole Solomon.

Scholastic Reserve Individual Standings

Table with 11 columns: #, Name, Pre Rat, Post Rat, Team, Rd 1, Rd 2, Rd 3, Rd 4, Rd 5, Total. Rows include Jun Iida, Evan D Schell, Jared M Halprin, etc.

2003 PA TEAM TOURNAMENT AND H.S. CHAMPIONSHIP
February 1st, 2003, Philadelphia, PA

TDs: Dr. Ira Lee Riddle, Steve McLaughlin, Dan Heisman

OPEN SECTION:

Table listing various chess teams and players for the Open Section, including names, scores, and board positions.

HIGH SCHOOL TEAM CHAMPIONSHIP

Table listing various chess teams and players for the High School Team Championship, including names, scores, and board positions.

SCHOLASTIC RESERVE SECTION:

Table listing various chess teams and players for the Scholastic Reserve Section, including names, scores, and board positions.

9.) Thomas, Guy R	1351/13	1408/18	W64	W37	W5	W25	W21	16.) West York CC #3	348		L2	L24	D11	L26	L22
10.) Powers, Andrew Y	646/04	725/09	W66	W38	L6	L26	L22	61.) Romeo, Brandon	431/04	399/09	L5	L93	W41	L101	D85
11.) Powers, Thomas	unr	1059/05	W67	W39	L7	W27	L23	62.) Chronister, Gregory	265/13	276/18	L6	W94	W42	L102	L86
12.) Venkatesh, Anil	unr	1364/05	W68	W40	W8	W28	W24	63.) Ilgenfritz, Chantz	unr	216/05	L7	L95	L43	L103	L87
4.) Andrei Pops Off	988		W18	W26	L1	W17	W28	64.) Fry, Devin	unr	100/05	L8	L96	L44	L104	L88
13.) Popov, Andrei	1132	1144	W69	W101	L1	W65	W109	17.) Andrew Jackson B	339		L3	W21	W12	L4	D5
14.) Janczewski, Anthony	923	942	W70	W102	D2	W66	L110	65.) Watts, Jocelyn	428/05	350/10	L9	L81	L45	L13	L17
15.) Nakamura, Moses	894	902	W71	W103	L3	W67	W111	66.) Hermanus, Gerritt	411/10	463/15	L10	W82	W46	L14	L18
16.) Kinzey, Jacob	unr	922/05	W72	W104	L4	W68	W112	67.) Hermanus, Kezia	311/10	497/15	L11	W83	W47	L15	W19
5.) Murray Avenue School	871		W19	D9	L6	L28	D17	68.) Robinson, Jamal	206/10	358/15	L12	W84	W48	L16	W20
17.) Lakata, Elizabeth	1412	1398	W73	W33	W21	D109	W65	18.) West York CC #5	289		L4	L22	L13	W20	L21
18.) Yeager, Dan	1008/20	996/25	W74	W34	D22	L110	W66	69.) Markey, Ross	428/05	413/10	L13	D85	L49	W77	L81
19.) Shammo, Gerald	582/10	535/15	W75	L34	L22	L110	L66	70.) Duffey, Brandon	149/05	148/10	L14	D86	L50	W78	L82
20.) Lowes, Samuel	420/18	377/23	W76	L36	L24	L112	L68	71.) Heltzel, Becky	unr	489/05	L15	L87	L51	W79	W83
6.) Exeter HS A	831		W20	W28	W5	L1	D3	72.) Hoover, Colleen	unr	100/05	L16	L88	L52	D80	L84
21.) Jacoby, Abel	837	856	W77	W109	L17	L1	L9	19.) Houston School A	263		L5	L12	D23	D11	L14
22.) Cosma, Gabriela	825/10	944/15	W78	W110	D18	L2	W10	73.) Barber, Lenny	unr	100/04	L17	L45	L89	L41	
23.) Indenbaum, Patrick	unr	1413/05	W79	W111	W19	W3	W11	74.) Jackson, Shawn	375/20	368/24	L18	L46	W90	W42	
24.) Li, Daniel	unr	583/05	W80	L112	W20	L4	L12	75.) Douglass, Julia	237/20	226/25	L19	D47	W91	L43	L54
7.) Andrew Jackson A	831		W21	L1	W27	L3	W15	76.) Davis, Jamal	197/13	335/18	L20	W48	L92	W44	W55
25.) Sumanti, Jeremy	1071/15	1074/20	W81	L1	W105	L9	W57	20.) West York CC #7	255		L6	L14	L28	L18	L23
26.) Wang, Zusong	844/15	924/20	W82	L2	W106	W10	W58	77.) Arman, Jacob	377/04	276/09	L21	L53	L109	L69	L89
27.) Walsh, Katherine	846	833	W83	D3	D107	L11	W59	78.) Welker, Kyle	104/09	100/14	L22	L54	L110	L70	D90
28.) Blocker, Panzio	591/10	628/15	W84	L4	W108	L12	W60	79.) Hartman, Axel J	100/03	100/08	L23	L55	L111	L71	L91
8.) York Youth CC #2	743		W24	L2	W26	D10	W25	80.) Fry, Cameron	unr	100/05	L24	L56	L112	D72	L92
29.) McCormick, Todd	799	802	W93	L5	L101	W37	L97	21.) West York CC #2	249		L7	L17	D14	D23	W18
30.) Smith, Anthony	740	789	W94	L6	W102	L38	W98	81.) King, Casey	497	500	L25	W65	L53	L89	W73
31.) Bastide, David	772/19	816/24	W95	L7	W103	L39	W99	82.) Hafferty, Ryan	100/04	275/09	L26	L66	W54	W90	W74
32.) Robinson, Nathaniel	712/25	709	W96	L8	W104	W113	W100	83.) Heltzel III, Ryan	unr	371/05	L27	L67	W55	W91	L75
9.) Five's Alive	718		W22	D5	W25	L2	W27	84.) Kibler, Nathan	unr	100/05	L28	L68	L56	L92	W76
33.) Dugan, Larkin	840	849	W85	L17	L97	L5	W105	22.) West York CC #6	255		L9	W18	L10	L12	W16
34.) Fagliano, Joel	751	760	W86	L18	D98	L6	W106	85.) Bailey, Greg	410/09	385/14	L33	D69	L37	L45	D61
35.) Augenbraun, Daniel	872	923	W87	W19	W99	L7	W107	86.) Bailey, Amanda	100/09	159/14	L34	D70	L38	L46	W62
36.) Fisher, Joshua	547/15	628/20	W88	W20	W100	W8	L108	87.) Fogelman, Zach	unr	577/05	L35	W71	L39	D47	W63
10.) Quinke Queen Sacs	713		W23	L3	W22	D8	W12	88.) McIntire, Mark	unr	346/05	L36	W72	L40	D48	W64
37.) Bautista, Caesar			W89	L9	W85	L29	W45	23.) West York CC #4	224		L10	L15	D19	D21	W20
38.) Livshits, Solomon	948	907	W90	L10	W86	W30	D46	89.) Millan, Roxanne	495	520	L37	L57	W73	W81	W77
39.) Andrews, Bryant	672/08	751/13	W91	L11	W87	W31	W47	90.) Arman, Hannah M	152/04	100/09	L38	L58	L74	L82	D78
40.) Jones, David	unr	817/03	W92	L12	W88			91.) Foery, Sarah	142/05	119/10	L39	L59	L75	L83	W79
113.) Bautista, Brad	339/08	354/10				L32	W48	92.) Hartman, Maggie	105/04	334/09	L40	W60	W76	W84	W80
11.) Morris School	713		D25	L27	D16	D19	W24	24.) The Formative Years	191		L8	W16	D15	L27	L11
41.) Brownlee, Taron	290/14	312/19	L97	L105	L61	W73	W93	93.) Farion, Christopher	376/10	350/15	L29	W61	L57	L105	L41
42.) James, Queen	100/08	100/13	L98	L106	L62	L74	L94	94.) Roessler, Julian	452/04	354/09	L30	L62	L58	L106	W42
43.) Caulk, Christian	734/13	745/18	W99	L107	W63	W75	W96	95.) Henderson, Stephen	unr	821/04	L31	W63	W59	W107	
44.) Upshur, Mikal	unr	591/04	W100	W108	W64	L76	WF	96.) Vahedi, Nathaniel	379/02	386/07	L32	W64	W60	L108	L43
12.) West York CC #1	485		L26	W19	L17	W22	L10	25.) Wyomissing B	unr		D11	W13	L9	W14	L8
45.) Schrom, Dylan	567/04	579/09	L101	W73	W65	W85	L37	97.) Guziak, Alex	unr	1258/05	W41	W49	W33	W54	W29
46.) Lepley, Lance	403/13	437/18	L102	W74	L66	W86	D38	98.) Strauss, Jon	unr	693/05	W42	W50	D34	W55	L30
47.) Leinaweaver, Ben	unr	308/05	L103	D75	L67	D87	L39	99.) Reynolds, Mike	unr	680/05	L43	W51	L35	W56	L31
48.) Seifarh, Drew	unr	100/05	L104	L76	L68	D88	L40	100.) Aronson, Steven	424/10	415/14	L44	W52	L36	WF	L32
13.) Andrew Jackson C	473		D27	L25	W18	D15	D26	26.) Milton Hershey School	unr		W12	L4	L8	W16	D13
49.) Tran, Ket	unr	862/05	W105	L97	W69	L57	W101	101.) Breznay, Michael	unr	855/05	W45	L13	W29	W61	L49
50.) Le, Tuan	unr	361/05	L106	L98	W70	L58	L102	102.) Simosky, Marcus	unr	672/05	W46	L14	L30	W62	W50
51.) Chung, Vi	unr	855/05	W107	L99	W71	W59	W103	103.) Powell, Gerald	unr	580/05	W47	L15	L31	W63	L51
52.) Bury, Gabriel	392/15	357/20	L108	L100	W72	W60	L104	104.) Smith, Travis	unr	569/05	W48	L16	L32	W64	W52
14.) Pine Road School	422		L28	W20	D21	L25	W19	27.) Exeter B	unr		D13	W11	L7	W24	L9
53.) Lakata, David	795	807	D109	W77	W81			105.) Wegman, Samantha	unr	599/05	L49	W41	L25	W93	L33
54.) Frey, Ryan	360	353	L110	W78	L82	L97	W75	106.) Quay, Eric	unr	636/05	W50	W42	L26	W94	L34
55.) Sandler, Kelsey	292/14	245/19	L111	W79	L83	L98	L76	107.) Lessie, Erica	unr	695/05	L51	W43	D27	L95	L35
56.) Santoro, David	242/06	301/10	L112	W80	W84	L99	WF	108.) Richard, Erica	unr	630/05	W52	L44	L28	W96	W36
15.) Houston School B	365		L1	W23	D24	D13	L7	28.) Wyomissing A	unr		W14	L6	W20	W5	L4
57.) Taylor, Gerard	547/10	692/15	L1	W89	W93	W49	L25	109.) Leiby, Kevin	unr	807/05	D53	L21	W77	D17	L13
58.) Snyder, Sean	unr	719/05	L2	W90	W94	W50	L26	110.) Bonino, Steven	unr	1090/05	W54	L22	W78	W18	W14
59.) Solanke, Olu	482	464	L3	W91	L95	L51	L27	111.) Barron, Daniel	unr	715/05	W55	L23	W79	W19	L15
60.) Solanke, Ade	369/03	188/08	L4	L92	L96	L52	L28	112.) Bell, Alex	unr	787/05	W56	W24	W80	W20	L16

**WHERE TO PLAY CHESS IN PA**

ANY CORRECTIONS/ADDITIONS/DELETIONS GRATEFULLY ACCEPTED

**ALLENTOWN:**

(1) Center City Chess Club; St. Luke's Lutheran Church, 417 N 7th St; Sat, 12:00-4:00

(2) A-B Chess Club; St. Timothy's Luth Ch, 130 S Ott St; Fri, 8-12 p.m.

**BLOOMSBURG:**

Bob Ross (W) 717-389-4337, (H) 717-784-8571

**BRADFORD:**

U P-Bradford Commons Building, Wed, 7-11 p.m.

**BRYN ATHEN:**

College of New Church CC; Pendleton Hall, Theological Lounge, Tues, 7:30, Glenn Frazier 215-572-1916

**CANONSBURG:**

Twp. Library, 610 E McMurray Rd, Mon, 6:30-8:30, 724-941-9430

**CHAMBERSBURG:**

C-burg Chessman; Thurs, 7-10 p.m., 600 Miller St, 717-263-8389

**CHELTENHAM:**

Rowland Community Center, Elm St., Thurs, 6-10 p.m.

**CLEARFIELD:**

Clearfield CC; Shaw Library, Tues and Thurs, 6-9 p.m., Sat 9-noon, Ron Williams 814-765-7788

**COATESVILLE:**

Coatesville Cultural Soc, 258 E Lincoln Hwy, Bob Jones 610-384-1790

**DUBOIS:**

Dubois CC; PSU Campus, 1st and 3rd Thurs

**ERIE:**

Erie CC; Zum Science Building, W 7th St between. Peach and Sassafras, Room 118 Fri, 6 p.m., James Walczak 814-870-7763

**FOLSOM:**

Comic Universe CC; 446 MacDade Blvd, Tues, 7-11

**GLADWYNE:**

Main Line CC; Waverly Hts. Ret. Comm. Game Room, 1400 Waverly Rd, Tues, 7, Dan Heisman 610-649-0750

**GREENSBURG:**

Courthouse Square, Wed, 6-11, 724-836-5625

**GREENVILLE:**

Howard Miller Center, Thiel College, Mon, 7-10

**HATBORO:**

Chaturanga CC; Trinity Orthodox Pres. Chur., County Line Rd. W of Blair Mill Rd., Thurs, 8

**HARRISBURG:**

Harrisburg East Shore Chess Club; Messiah Luth Ch, 901 N 6th St, Tues, 6-9, Sat 9-noon, 717-234-4921 or 717-236-6541 (Also see West Shore)

**HAWLEY:**

Settler's Inn Main St., Wed, 6

**HAZLETON:**

Greater Hazleton CC; Zola's Lamppost Restaurant, Route 980, Thurs, 8-midnight, Bob Brubaker 570-384-4122

**HUNTINGDON VALLEY:**

Hunt. Valley Chess Society Juniors; Huntingdon Valley Library, 625 Red Lion Road, Tues, 7:30-8:30

**JOHNSTOWN:**

Senior Activities Ctr, 2nd Floor, Bedford and Main Sts, Tues, 7:30, 814-467-9759

**LANCASTER:**

Manor Chess Club; 3577 Blue Rock Rd, Weds, 6:30-9 p.m., 717-892-6612

**LANSDALE:**

North Penn CC; St. John's UCC Church, Main and Richardson Sts., Thurs and Fri, 7-1 a.m., 215-699-8418

**MANSFIELD:**

Wellsboro-Mansfield CC; Independence Bible Church, 33 East Ave, 1st/3rd Mon, 7-10, Don Thompson 570-376-2452

**MONROEVILLE:**

Monroeville Chess Club; Wed, 6:30-8:30, Delbert Tyler 412-824-5015

**MURRYSVILLE:**

1st Pres. Church, 3202 N Hills Rd, Wed, 7-11, Jay Griffin 724-325-2484

**NEW CASTLE:**

Lawrence County CC; Trinity Episcopal Church, N. Mill St. at Falls Ave, Thurs, 6:30-9

**NEWTOWN SQUARE:**

Marple-Newtown Scholastic CC; Robert Gauntlett Community Center, Rte 3 and Media Line Rds, Tues, 6:30-8:30

**PHILADELPHIA:**

(1) FMCC; 1420 Walnut St, Suite 460, noon-11 daily

(2) U of Penn CC; Chats Cafeteria, 3800 Locust, Wed, 8, 215-898-2399

(3) Masterminds CC; Anderson Hall, Temple University, Room 906, Mon, 6-10, Ernest Moore Jr. 215-235-1696

**PITTSBURGH:**

(1) U of Pitt CC; Lowel Level, William Pitt Union, Tues &amp; Thurs, 7-11 p.m., Tom Martinak 412-681-7590

(2) PGH CC; Wightman School Bldg., 5604 Solway St, Wed, 1-10, Sat, 12-10:30, 412-421-1881

(3) Crafton Public Library, 140 Bradford Ave, 1st/3rd Sat, 9-noon, 412-922-4234

(4) East Lib. Library, 5920 Ralph Mull Mall, Tues, 3:30-6:30, 412-661-8412

(5) Hill Branch Library, 419 Dinwiddie St; Mon &amp; Thurs, 4-8, Sat, 11-4:30, 412-361-6170

(6) CMU CC; University Center Commons, Thurs, 6:30-8:30 p.m.

(7) Mt Lebanon Library, 16 Castle Shannon Blvd; 1st/3rd Mon Sept-May, 412-531-1912

**RIDLEY TOWNSHIP:**

Tri-State Chess Club; Times Square Restaurant, McDade and Rte 420, Holmes, Tom Pike 610-328-5977

**ROSLYN:**

2812 Hammond Place, Steve McLaughlin 215-784-5938

**SHAMOKIN:**

Shamokin CC; Burger King, Rte 61, Mon, 7:30

**SHIPPENSBURG:**

Shippensburg CC; Outlook Pointe, 129 Walnut Bottom Rd, Fri, 7-10, Terry Campbell 717-486-0211

**SOUTHAMPTON:**

Southampton CC; Davisville Church, Sun, 7 pm, 215-675-9535

**STATE COLLEGE:**

PSU CC; A.S.I. Bldg, Room 16, Thurs, 6:30 p.m.

**STROUDSBURG:**

Stroudsburg Chess Club; YMCA, Main St., Thurs, 7-11, Eric Mark 570-476-8939 or Jim Walsh 717-992-5475

**SUNBURY:**

Susq. Val. CC; Oaklyn Baptist Ch, Rte 61, Sat, 6 p.m., 570-863-2383

**UNIONTOWN:**

K of C Hall, Old Rte 119, 724-438-9250

**WEST CHESTER:**

(1) West Chester CC; United Meth Ch., High and Barnard Sts, Wed, 7

(2) West Chester Univ. CC; Sykes Student Bldg, Rm 112, Thurs, 11-2

**WEST SHORE (Harrisburg):**

West Shore Chess Club; Calvary United Methodist Church, 700 Market St (Rear), Mon, 7-10, Gerald Dubs 717-975-5589

**WILKES-BARRE:**

W-B CC; Board Rm, Oster. Lib., Wed, 6-9, George Trent 570-740-7662

**WILLIAMSPORT:**

Williamsport Chess Soc.; Wertz Stud. Ctr., Lycoming College, Tues

**YORK:**

(1) York Township Community Center, 2500 S George St, Wed, 6:30-10, 717-845-9368

(2) York Youth CC; Grace Brethren Church, Newberry &amp; Parkway, Wed, 2-5:30 or Light of Life Performance Arts Center, 41 Cherry St, Seven Valleys, Fri, 6-9:30, 717-852-8434