

en passant

Journal of The Pittsburgh Chess Club

September 2001
Vol 57 No 5

5604 Solway Street Suite 209
Pittsburgh PA 15217-1270
412-421-1881



“Well, dear, we survived Hurricane Zadora. Now I’m going to the chess club to see if I can survive Hurricane Humphrey Plotz.”

En Passant

Journal of the Pittsburgh Chess Club

Chess Journalists of America Award

Best Club Bulletin, 2000

<http://trfn.clpgh.org/orgs/pcc/>

Club Telephone: 412-421-1881

Hours: Wednesday 1 - 10 PM; Saturday Noon - 10:30 PM

Editor: Bobby Dudley, 107 Crosstree Road
Moon Township PA 15108-2607
412-262-2138 or 412-262-4079
bgdudley@compuserve.com

Interim Editor: Thomas Martinak, 320 N Neville St Apt 22
Pittsburgh PA 15213-1656
412-681-7590
martinak_tom_m@hotmail.com

Games Editor: Bruce Leverett, 759 Lebanon Avenue
Pittsburgh PA 15228-1131
412-561-3972

Material for each issue is due in the editor's hands by the 15th of the month preceeding publication. Next issue Nov 2001.

Selected back issues of *En Passant* are available for download in PDF form at the Pittsburgh Chess Club website (<http://trfn.clpgh.org/orgs/pcc/enpass.html>). In addition, at the same location, the games in this issue (and for some back issues) are available for download in PGN form.

Officers of the Pittsburgh Chess Club

President	James Cummings
Vice President	Keith Davie
Treasurer	Russell Schuh
Secretary	James Szurek
Special Events	Arthur Moskowitz
Publications	Bobby Dudley
Maintenance	Isak Greenberg
Prison Affairs	Edward Barr
Steward	John Lokmer
At Large	Richard Barbara Marc Jampole Thomas Magar Robert Milisits William Moore Welsh White

Tournament Clearinghouse Tom Martinak
Club Champion Ryan Milisits

Schedule of Events, Also available on-line at

<http://www.pitt.edu/~schach/ChessPA/wpatnmts.htm>

September 11 - October 16. 3rd Fred A Sorensen Memorial. 6-SS. Pittsburgh Chess Club. 2 sections: **Championship.** **TL:** 30/90, SD/60. **EF:** \$28 postmarked by 9/3, \$38 at site, \$2 discount to PCC members. \$\$ (540 b/27): 200-100, U2000 \$90, U1800 \$80, U1600 \$70. **Booster**, open to U1600. **TL:** Game/60. **EF:** \$14 postmarked by 9/3, \$19 at site, \$1 discount to PCC members. Trophies to 1st & 2nd, Ribbons to 3rd. **All:** Reg 6 - 6:45pm. Rds 7pm each Tuesday. **Info:** 412-681-7590. **Ent:** Tom Martinak. NS. NC. W.

September 15. The MCC John Cauley Memorial Chess Championships. 4-SS. Monroeville Academy, 4518 Northern Pike, Monroeville PA 15146. **EF:** \$12, if postmarked by 9/8, \$17 later, on-site \$25. Open schedule: G/60. 1 section: **Open**, grades K-12, rated 1100 & Up (but players may choose to play up). Rds 8:30am - 11am - 1:30pm - 3pm. Main schedule: G/30. 5 sections: **Premier**, grades K-12, rated 950 & 1099. **Intermediate**, grades K-12, rated 850 to 949. **6 to 12 Beginner**, grades 6-12, rated 849 & Under. **Upper Elementary**, grades 3-5, rated 849 & Under. **Lower Elementary**, grades K-2, rated 849 & Under. Rds 9:30am - 11am - 1pm - 2:30pm. **All:** Reg 8 - 8:30am. **Info:** 412-824-5015. **Ent:** Delbert D. Tyler, 351 Shady Ridge Drive, Monroeville PA 15146-4586.

A Heritage Event

September 16. 42nd Annual Pittsburgh Chess League : Round 1. 30/90, SD/60. William Pitt Union, Univ. of Pittsburgh, 5th Ave. & Bigelow Blvd., Pittsburgh PA 15260. 4 players + alternates per team. **Reg:** Thursday 9/13, 7pm - 8pm & Sunday 9/10, 11am - Noon. Rds 2pm - 9/16, 10/21, 11/11, 12/9. **EF:** \$50 received by 9/13, \$60 at site, Escrow deposit of \$50 also required, refundable if 2 or fewer forfeits. **Info:** 412-681-7590. **Ent:** Tom Martinak. NS. W. FIDE.

September 18. PCC Executive Committee Meeting.

Pittsburgh Chess Club. 6pm.

A Heritage Event

September 22. 25th Pittsburgh Class Championship. 4-SS. G/75. Dining Rooms A & B, 1st Floor, William Pitt Union, Univ. of Pittsburgh, 5th Ave. & Bigelow Blvd., Pittsburgh PA 15260. **EF:** \$24 postmarked by 9/14, \$34 at site, \$2 discount to PCC members. 6 sections: **2000 & Up. Class A. Class B. Class C. Class D. 1199 & Under.** \$\$ (850 b/55): 125 to 1st in each section, \$100 to U2200 in 2000 & Up. Unrateds may not win over \$50. Reg 9:15-9:30am. Rds 10am - 1pm - 4pm - 7pm. **Info:** 412-681-7590. **Ent:** Tom Martinak. NS. NC. W.

October 13. PCC Annual Meeting. Pittsburgh Chess Club. 1pm. Followed by a PCC Board of Directors meeting.

October 21 (QC). Pittsburgh Chess League October Quick Quads. 3-RR. G/15. Main Floor, William Pitt Union, Univ. of Pittsburgh, 5th Ave. & Bigelow Blvd., Pittsburgh PA 15260. **EF:** \$10, \$3 discount to age 18 & Under. \$\$ 20 to 1st in each quad. Reg ends 11:15am. Rds 11:30am - Noon - 12:30pm. **Info:** 412-681-7590. **Ent:** Tom Martinak. NS. W.

October 21. 42nd Annual Pittsburgh Chess League : Round 2. 30/90, SD/60. Main Floor, William Pitt Union, Univ. of Pittsburgh, 5th Ave. & Bigelow Blvd., Pittsburgh PA 15260. Rds 2pm. **Info:** 412-681-7590. NS. W. FIDE.

A Heritage Event

October 26 - 28 or 27 & 28 GPP:6 Pennsylvania 44th Gateway Open. 5-SS. 30/80, SD/1 (2-day option, rd 1 G/90). Dining Rooms A & B, 1st Floor, William Pitt Union, Univ. of Pittsburgh, 5th Ave. & Bigelow Blvd., Pittsburgh PA 15260. \$\$ (1605 b/65, two-thirds guaranteed). 3 sections: **Open**, open to all: \$\$ 300-150, U2100 \$95, U2000 \$90. **Premier**, open to U1900: \$\$ 200-100, U1700 \$95, U1600 \$90. **Reserve**, open to U1500: \$\$ 200-100, U1300 \$95, U1200 \$90. Unrateds may not win over \$100 in U1900, or \$75 in U1500. **EF:** 3-day \$35, 2-day \$34 postmarked by 10/

PCC Special Events

by Art Moskowitz

On June 26, Life Master Tom Magar gave a clock simultaneous against five opponents. In this difficult format, each board has a clock. After his opponent has moved, Tom's clock keeps running while he is studying the other games until he returns and makes his move. Tom was in fine form, and won all of the games.

On August 21 an Exhibition Game was played between Bill Hughes and Don Meigs with move-by-move commentary by Tom Martinak. The result was adjudicated a win for Bill. The annotated game will appear in the next issue of *En Passant*.

Thomas P. Magar - John M. Lokmer

Clock Simultaneous Exhibition, June 26, 2001

1.d4 g6 2.e4 Bg7 3.Be3 b6 4.Bd3 Bb7 5.f3 e6 6.c4 d6
7.Nc3 Ne7 8.Qd2 Nbc6 9.Nge2 Qd7 10.a3 d5 11.cxd5
exd5 12.e5 O-O-O 13.O-O f5 14.b4 h6 15.Rfc1 g5
16.f4 gxf4 17.Bxf4 Ng6 18.Be3 Kb8 19.Qc2 Nce7
20.a4 Rdf8 21.a5 f4 22.Bf2 f3 23.axb6 fxe2 24.bxc7+
Qxc7 25.Bxg6 e1Q+ 26.Bxe1 Nxc6 27.Qxg6 Rhg8
28.Nb5 Qd7 29.Qd6+ Qxd6 30.Nxd6 Rf4 31.Bf2 Rgf8
32.Be3 Rg4 33.Ra5 Rg8 34.Rb5 Bh8 35.Rxb7+ Ka8
36.Ra1 1-0

Schedule of Events - Continued

18, all \$44 at site, \$3 discount to PCC members. **Re-entry:** \$15. **3-day schedule:** Reg ends Fri 6:30pm, Rds Fri 7, Sat 1:30 - 6:30, Sun 10 - 3. **2-day schedule:** Reg ends Sat 9:30am, 1st Round 10am, then merges with 3-day. **Bye:** 1-5, rds 4 & 5 must commit before rd 2. **Info:** 412-681-7590. **Ent:** Tom Martinak. NS. NC. W. FIDE.

October 30 (Unrated). 18th PCC 5-Minute Championship. RR. G/5. Pittsburgh Chess Club. Reg 6 - 6:45pm. Rds 7pm until finished. **EF:** \$10, PCC membership required. 1st place will receive a one year PCC membership extension. **Info:** 412-421-1881. NS. NC. W.

November 6 - December 11. 5th Robert P Smith Memorial. 6-SS. Pittsburgh Chess Club. 2 sections: **Championship.** TL: 30/90, SD/60. EF: \$28 postmarked by 10/29, \$38 at site, \$2 discount to PCC members. \$\$ (540 b/27): 200-100, U2000 \$90, U1800 \$80, U1600 \$70. **Booster,** open to U1600. TL: Game/60. EF: \$14 postmarked by 10/29, \$19 at site, \$1 discount to PCC members. Trophies to 1st & 2nd, Ribbons to 3rd. **All:** Reg 6 - 6:45pm. Rds 7pm each Tuesday. **Info:** 412-681-7590. **Ent:** Tom Martinak. NS. NC. W.

November 11 (QC). Pittsburgh Chess League November Quick Quads. 3-RR. G/15. Main Floor, William Pitt Union, Univ. of Pittsburgh, 5th Ave. & Bigelow Blvd., Pittsburgh PA 15260. **EF:** \$10, \$3 discount to age 18 & Under. \$\$ 20 to 1st in each quad. Reg ends 11:15am. Rds 11:30am - Noon - 12:30pm. **Info:** 412-681-7590. **Ent:** Tom Martinak. NS. W.

November 11. 42nd Annual Pittsburgh Chess League : Round 3. 30/90, SD/60. Main Floor, William Pitt Union, Univ. of Pittsburgh, 5th Ave. & Bigelow Blvd., Pittsburgh PA 15260. Rds 2pm. **Info:** 412-681-7590. NS. W. FIDE.

Thomas P. Magar - Arthur Moskowitz

Clock Simultaneous Exhibition, June 26, 2001

1.d4 d5 2.Nf3 Nf6 3.e3 Bg4 4.Nbd2 e6 5.c3 Nbd7
6.Bd3 c5 7.Qe2 Bd6 8.h3 Bh5 9.dxc5 Nxc5 10.Bb5+
Ncd7 11.e4 a6

Simpler is O-O.

12.Bd3 Ne5 13.g4 dxe4

Better is 13. ... Nxd3+ 14.Qxd3 Bg6.

14.Nxe4 Nxd3+ 15.Qxd3 Nxe4 16.Qxe4 Bg6 17.Qxb7
Black has lost his b-pawn, but gets a strong position with the powerful Bishop-pair as compensation.

17. ... O-O 18.Nd4 Qf6 19.Qg2 Qe5+ 20.Be3 Be4

Better is 20. ... Rab8 21.b3 Rbc8 with lots of pressure on the Queenside.

21.f3 Bb7 22.Qf2 Qa5 23.O-O Rad8 24.a4 Qc7 25.Ne2
Qc6 26.a5 e5 27.Ng3 Be7 28.Nf5 Rfe8 29.Kg2 Bf8
30.Rfd1 g6 31.Ng3 Qe6 32.Bb6 Rd7 33.Ne4 f5
34.Nf6+ Qxf6 35.Rxd7 Bc6 36.Rc7 fxc4 37.hxc4 Rd8
38.Re1 1-0

Thomas P. Magar - H. George Bauer

Clock Simultaneous Exhibition, June 26, 2001

1.e4 d6 2.d4 Nf6 3.f3 b6 4.c4 Bb7 5.Bd3 e6 6.Nc3 c6
7.Be3 Be7 8.Nge2 Nbd7 9.Qd2 Qc7 10.O-O h6
11.Rac1 a6 12.d5 Ne5 13.dxe6 Nxd3 14.exf7+ Kxf7
15.Qxd3 Rag8 16.b4 g5 17.Rfd1 Nd7 18.Ng3 Ne5
19.Qe2 Bc8 20.Na4 Be6 21.Nxb6 c5 22.Nd5 Bxd5
23.cxd5 c4 24.Nf5 Rc8 25.Nd4 Qb7 26.a3 Nd3 27.Rc2
h5 28.Nc6 Bf6 29.Rxc4 Nf4 30.Bxf4 gxf4 31.Rdc1
Qb6+ 32.Kf1 Kg6 33.e5 Bh4 34.e6 Rce8 35.Qe4+ Kg7
36.Nd4 Rhf8 37.Rc7+ Be7 38.R1c6 Qb8 39.Nf5+ Kf6
40.Qxf4 Qb5+ 41.Ke1 Bd8 42.Nh4# 1-0

Thomas P. Magar - Eric A. Berthoud

Clock Simultaneous Exhibition, June 26, 2001

1.d4 Nf6 2.c4 Nc6 3.Nc3 e5 4.d5 Ne7 5.e4 Ng6 6.f3 a6
7.Be3 Bb4 8.Nge2 d6 9.a3 Bxc3+ 10.Nxc3 Bd7 11.Qd2
c5 12.g4 Nh4 13.Be2 b5 14.Bg5 b4 15.Bxh4 bxc3
16.Qxc3 h6 17.Bf2 a5 18.b3 O-O 19.h4 a4 20.b4 cxb4
21.axb4 Bxg4 22.fxc4 Nxe4 23.Qe3 f5 24.gxf5 Nxf2
25.Qxf2 Qf6 26.O-O Rf7 27.Bd3 Rfa7 28.Ra3 Kh8
29.c5 dxc5 30.bxc5 Rb7 31.Be4 Rb3 32.Rfa1 Rb4
33.Bg2 Rxh4 34.d6 e4 35.Rxa4 Rxa4 36.Rxa4 e3
37.Ra8+ Kh7 38.Qxe3 Qxf5 39.Rb8 Rg4 40.c6 Qc2
41.Qf3 Qc5+ 42.Qf2 Qxd6 43.Qc2+ Rg6 44.c7 Qd4+
45.Kf1 Qf4+ 46.Ke2 Qg4+ 47.Bf3 1-0

PCC Annual Membership Meeting

Saturday October 13, 1pm

All members are encouraged to attend and express your opinions. At least 6 positions (5 3-year & 1 2-year) on the Board of Directors will be up for elections. Currently holding these positions are James Cummings, Isak Greenberg, John Lokmer, William Moore, Arthur Moskowitz & Russell Schuh.

Chess News for Juniors by Beth Harrison

Latest News: Summer is a quiet time for scholastics, but many of our juniors have been busy playing in adult tournaments. Ryan Milisits and Justin Papariella played in the World Open over the 4th of July. Several of our friends from West Virginia made the trip to Philadelphia as well: Jason Young, Jamie Karraker, Trevor McGraw, Kevin Sivaneri, Elias Stewart, Terry Wassell, and Katrina Karraker. In addition, congratulations to Jason Young for winning the West Virginia Middle School Championship and to Terry Wassell for his second place tie for the West Virginia High School Championship.

Locally: Ryan Milisits is the 2001 Pittsburgh Chess Club Junior Champion. At the Allegheny Chess Congress in the U1500 division, Zachary Malone from Ohio won second place; Alex Duff, a new player from McKees Rocks won third place; and Luis Guerrieri won fourth; all three finished with 4 points and each won \$67. Junior players did well in the Pittsburgh Summer Open held August 5, at the Pittsburgh Chess Club. Peng Sun won the top prize, \$125, in the 1500 - 1699 section; Aaron Schiff won first place in the 1300 - 1499 section; both Alex Duff and Michael Schiff won all their games, taking the top prizes in the 1100 - 1299 and 1099 & Under sections respectively. Our guys were lucky at cards, too. In the Tuesday night Wild Card Open Justin won \$63 with a Straight and Peng won \$47 with Two Pair in the Open section. In the Booster section Alexander Heimann won first place with a Full House, and Luis Guerrieri came in second with Three of a Kind. Luis Guerrieri and Alex Duff were in the money in the Summer Grand Prix winning third and fourth place respectively.

In the News: Justin Papariella and Peng Sun were featured in a very nice article about their chess accomplishments in the August 2 edition of *The Herald*. A copy of the article is posted at the Pittsburgh Chess Club. Pennsylvania Middle School Chess Co-Champs Matthew Russell and Patrick Harrison were both state finalists at the Pennsylvania Geographic Bee.

Top 100 Lists: The Western Pennsylvania area currently has fourteen junior players on the USCF Top 100 lists. That is indeed a remarkable number. Congratulations to the following players who have earned this national recognition: Ages 15 & 16 and Overall Under Age 16 - Ryan Milisits and Justin Papariella; Ages 13 & 14 - Jason Young, Zhipeng Sun, and Patrick Harrison; Ages 9 & 10 - Gabriel Petesch, Hari Seshadri, and Alex Zhai; Ages 8 & Under - Mark Heimann, Alexander Heimann, Joshua Barbara, Joshua Silver, Daniel Lee, and Vivek Nimgaonkar.

PSCF Web Site: Check out the Top 100 lists for our state on the Pennsylvania State Chess Federation Web site <<http://www.pscfchess.org/>>.

Coming Events: The John Cauley Memorial Championship sponsored by the Monroeville Chess Club will be September 15, at Monroeville Academy. Check with Mr. Tyler, 412-824-5015, for more information. The 25th Pittsburgh Class Championship will be September 22, at the William Pitt Union, University of Pittsburgh. Open to students and adults, this four-round tournament is divided into six ratings sections ranging from 1199 & Under to 2000 & Up. Time control is G/75. Call Mr. Martinak, 412-681-7590, or check the University of Pittsburgh Chess Club Web site <<http://www.pitt.edu/~schach/>> for more information.

Pittsburgh Chess League: It's time to sign up for for the new season of the PCL. Round 1 is on Sunday, September 16. The entry fee goes up after September 13, so get your team roster and fees to Mr. Martinak. There are games for alternates; everyone who comes gets to play. You can find out more about the Pittsburgh Chess League on the University of Pittsburgh Chess Club Web site.

Long Range Planning: The 2001 National Scholastic K - 12 Grade Championships will be held December 14 - 16, 2001, in Dallas, Texas. The site hotel with special chess rates is the Hyatt Regency, Dallas at Reunion. This tournament is different from the spring USCF nationals; you play only those in your grade; i.e. third graders play only third graders and a champion is declared for each grade. Closer to home, the Pennsylvania Team Tournament will be held either Jan. 26 or Feb. 2. The Pennsylvania Scholastic Chess Championships, otherwise known as "States," will be March 9 - 10, 2002, in Bloomsburg, PA. The National Scholastic High School Championship will be April 11 - 14, in Louisville, KY. This is the tournament for high school students, but anyone in grades K - 12 can participate. Younger students might want to enter the K - 12 U1300 or U1000 sections. The National Elementary School Championship is April 25 - 28, in Portland, Oregon. The National Junior High Championship is May 9 - 12, in Milwaukee, Wisconsin.

Send Us News: We want to hear from you! Send news about upcoming chess events, results, or special accomplishments to Beth Harrison, 222 Cornwall Dr., Pittsburgh, PA 15238, or email beth.harrison@icubed.com. We are looking for kids' games to be analyzed in future issues. Send us your notation! Chess News for Juniors deadline for the November issue is October 5.

2001 PCC Junior Championship - June 23, 2001

#	Name	Pre Rat	Post Rat	Rd 1	Rd 2	Rd 3	Score	Prize
1	Milisits, Ryan R	2006	2007	W3	W4	W2	3	PCC Membership
2	Duff, Alex	1238/04	1315/07	W4	D3	L1	1½	
3	Jampole, Ezra A	1020	1125	L1	D2	W4	1½	
4	Opaska, Michael P	1477	1419	L2	L1	L3	0	

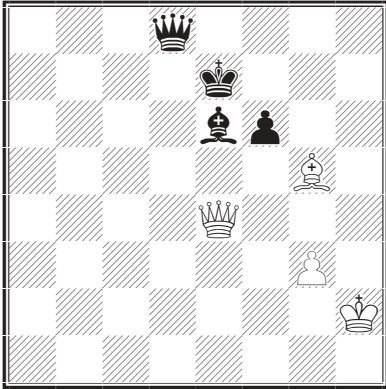
Puzzles for Juniors *by Rich Barbara*

Hate to say it but summer is pretty much over. Many of us who took it a bit easy and didn't play much chess are starting to think about getting into "playing shape". The Pittsburgh Chess League, and a full schedule of scholastic and open tournaments are just around the corner. One of the best ways to "sharpen" a rusty game is with Tactics. So here to help you prepare for the fall chess season are a few straightforward and fairly simple chess puzzles.

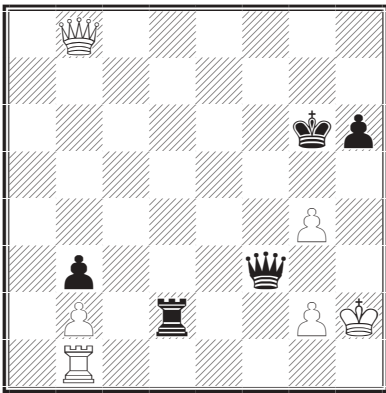
As always, ENJOY!

If you have a game that ends in a checkmate combination or a combination was key in deciding the outcome of the game and you would like to see the combination appear as part of this column, please feel free to submit it to me. I'll need both players names, the date and the winning line as played. E-mail me at Rich_barbara@hotmail.com

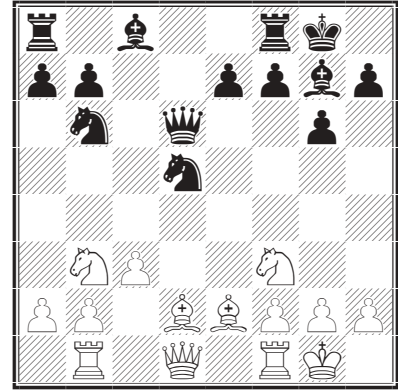
Puzzle #1 - White to move & win



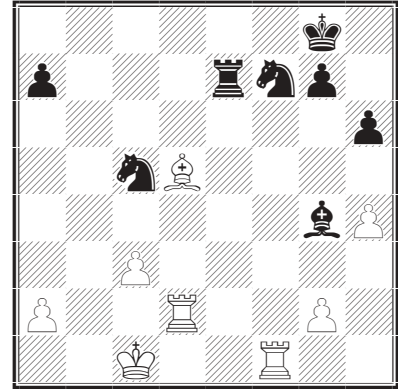
Puzzle #2 - White to move & win



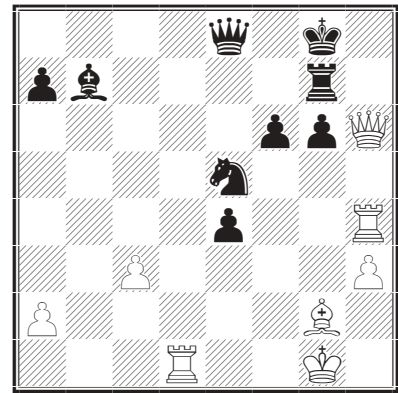
Puzzle #3 - White to move & win



Puzzle #4 - White to move & win



Puzzle #5 - White to move & win



Szabo vs Bronstein, 1953

Puzzle #1 - 1 Bxf6+ Kxf6 2 Qh4+ skewering Black's King and Queen.
 Puzzle #2 - 1 Qg8+ Kf6 2 Qf8+ winning the Black Queen.
 Puzzle #3 - 1 c4 and after the Knight moves c5 forks the Queen

and the other Knight.
 Puzzle #4 - 1 Bxf7+ Rxf7 2 Rd8+ Kh7 3 Rxf7
 Puzzle #5 - 1 Rd8 Qxd8 2 Qh8+ Kf7 3 Qxd8 g5 4 Rh6 and
 Black resigns.

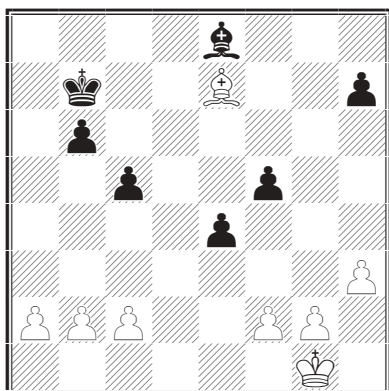
The Practical Endgame

by GM Edmar Mednis

Continued from the July *En Passant*.

II Opposite Color Bishop Endgames: Defending From Behind

It is well known that in inferior opposite color Bishop endgames (the weaker side is down at least one pawn), drawing chances must come from creating a blockade. Yet the important question remains: how to fashion such a blockade? The principle that applies for the inferior side is: attack the pawns from behind. More often than not both the Bishop and King will need to be so activated.



3

A relatively simple example is Diagram 3, A. Nimzovitch - S. Tarrasch, Bad Kissingen 1928, after Black's 38th move. White is up a pawn - in the form of a 3P vs. 2P Queenside majority - and Black's Kingside pawn structure is somewhat vulnerable to penetration by White's King. White won apparently effortlessly as follows:

39 Kh2 c4 40 Kg3 Kc8 41 Kf4 Kd7 42 Bb4 Ke6 43 Bc3! Bd7 44 g3 b5 45 Kg5 Kf7 46 h4 Bc8 47 Kh6 Kg8 48 b3 cxb3 49 cxb3 f4

Desperation yet the normal 49...Bd7 loses to 50 Be5:

- (1) 50 ... Be8 51 Kg5 Bd7 52 Kf6 Kf8 53 Bd6+;
- (2) 50 ... Bc8 51 a4, creating a viable passed pawn.

50 gxf4 Bd7 51 Kg5 Kf7 52 f5 Bc6 53 Kf4 Ke7 54 Ke5 Be8 55 Kxe4 and White won.

However, when GM Yuri Averbach - one of the world's top endgame experts - played over this endgame, he was incredulous that Black lost so badly. It didn't take him long to hit on the correct thematic plan. Instead of the damaging 39...c4? Black should activate his Bishop. Look at GM Averbach's analysis:

39 ... Bb5!

and now:

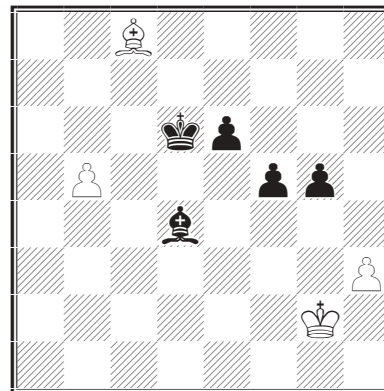
(1) 40 Kg3 Bf1! 41 h4 h5! 42 Kf4 Bxg2 43 Kxf5 Bf3

Black's Bishop safeguards the Kingside pawns and Black's King the Queenside for a certain draw.

(2) 40 g4 fxc4 41 hxc4 Be2! 42 Kg3 Bf3 43 Kf4

Kc6 44 Kf5 Kd5 45 g5 b5 46 Kf6 Bh5!

Again the Bishop will be able to protect the Kingside pawns for the draw.



4

A truly multifaceted situation is shown in Diagram 4, Schoneberg - Stark, Weimar (East Germany) 1968, White on move. In the analysis to come I have made grateful use of some of the work presented by Boris Voronkov in the USSR magazine "64", # 31, 1976, p. 6. Both sides have passed pawns, Black has a one pawn advantage and the e and f-pawn duo is connected and passed. It is obvious that Black has good winning chances. Let us again first look at the game continuation and then the correct defense for White.

(1) Game Continuation

1 Kf3? Ke5? 2 Bd7? Bb6! 3 Ke2 Kf6 4 Kf3 e5 5 Bc6 Ke6 6 Bb7 e4+ 7 Bxe4

Fails by a tempo, yet 7 Ke2 Ke5 followed by 8...f4 and 9...f3(+) is equally hopeless.

7...fxe4+ 8 Kxe4 Bf2!

Not 8...Kf6? when White draws with 9 h4!

9 b6 Kd6 10 Kf5 Bh4 and Black won.

(2) The only defense = don't be greedy!

1 b6!!

We saw from the game continuation that the b-pawn did nothing for White. Therefore it must be sacrificed to enhance the Bishop's long range scope.

1 ... Bxb6 2 Kf3 Ke5 3 Ke2! Kf6 4 Kd3! e5 5 Kc4 e4 6 Kd5!!

White's King has joined the fray to take a bead on Black's protected passed pawns from behind. Notice how White's King prevents Black's King from helping to advance the passed pawns in unison.

6 ... e3

After 6 ... Kg6, White leaves the Bishop trained on the f-pawn and keeps the King active with 7 Ke5!, e.g. 7 ... Bc7+ 8 Kd4 etc.

7 Ba6!

The key to 1 b6!!: White's Bishop now can guard the crucial e2 square.

7...g4!?

The only try, since 7...Kg6 is foiled by 8 Be2 and 7...f4 allows a total blockade after 8 Ke4 Kg6 9 Be2. Therefore Black tries his luck with separated passed pawns.

8 hxg4 fxg4 9 Ke4!

White keeps in mind the principle of attacking the pawns from behind.

9...Kg5 10 Kd3!

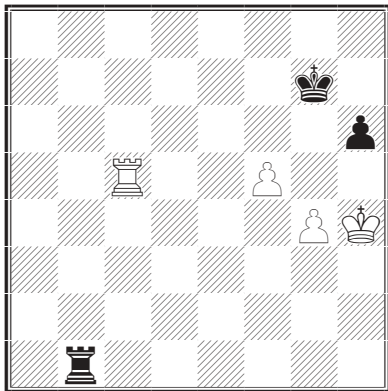
Because Black's pawns are separated by only one file, White can now fashion a routine blockade.

10...Kh4 11 Ke2 Kg3 12 Bc8! Draw

The final thematic moment. White's Bishop again does his job from the far behind: after 12...Kf4 13 Bd7 g3 14 Bh3 stops everything; the try 12...Kh4 13 Bd7 g3 allows the defense 14 Bc6 Kh3 15 Kf1.

III Rook & Pawn Endgames: A Pawn Too Far Advanced

It is bad enough to be a pawn down, but if your remaining pawn(s) are vulnerable, then indeed there may be no saving element. A very instructive and theoretically important specific situation will be demonstrated with the following "twins".



5

Diagram 5 shows the position from two world class GMs: P. Keres - V. Smyslov, USSR 1949, White on move. White is up a protected passed pawn, has an active Rook and an active King. Yet the position is drawn because Black can protect the h-pawn and because of the greatly reduced material remaining. Despite a lot of effort by GM Keres, GM Smyslov was not to be denied the the half point.

1 Rc7+ Kf6! 2 Rc6+

There is nothing in 2 Rh7 Rh1+ 3 Kg3 Rg1+ 4 Kf3 Rh1! 5 Kg2 Rh4 6 Kg3 Rh1. Black's Rook has just enough space to stay active on the h-file.

2 ... Kg7 3 Rg6+ Kh7 4 Re6

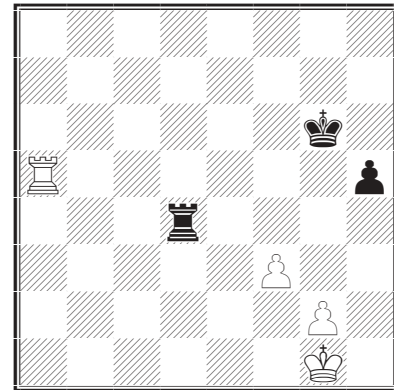
White's Rook has cut off Black's King yet can't get his King to help out (4 Kh5?? Rh1 Mate).

4...Kg7! 5 Kg3 Rf1! 6 Re7+ Kf6! 7 Rh7 Rh1 8 Kg2 Rh4 9 Kf3 Rh1

With some delay White has executed the regrouping already discussed in the note to White's 2nd move, but no visible progress is in view. There still followed:

10 Rh8 Kg7 11 Rd8 Rf1+ 12 Kg2 Rf4 13 Rd7+ Kf6 14 Rd6+ Kg7 15 Kg3 Draw

However, a small change in the positioning of Black's h-pawn is all that is required for the situation to become critical. This will be demonstrated in the play from Diagram 6, Gliksmán -



6

Novak, Stary Smokovec 1976, White on move.

1 Ra1!

Very perceptive play: White gets ready to set up the "twin" pawn formation of Diagram 5, i.e. White pawns on f4 and g3, Black pawn on h5. With White's Rook on the first rank, Black's Rook will be denied activity along the h-file.

1...Rb4 2 Kh2 Rb2 3 Rf1! Kg5 4 Kh3 Rb3 5 g3! h4!?

Black aims for some counterplay. The routine continuation would be 5...Ra3 6 f4+! Kg6 7 Rb1 Ra6 (or 7...Ra5 8 Rb6+ Kg7 9 Kh4 Kh7 10 Re6 followed by 11 Re5. Note that Black's King is too far separated from his pawn.) 8 Rb5 Ra1 9 Rb6+ Kf5 10 Rh6.

6 g4!

The endgame after 6 gxh4+ is a theoretical draw, though of course Black has to defend accurately.

6...Ra3 7 Rf2 Rb3 8 Kg2 Kf4 9 Ra2! h3+

After 9 Rb4 GM Pachman gives 10 Kh3! Kxf3 11 Ra3+ Kf4 12 Kxh4 as leading to a theoretical win.

10 Kxh3 Rxf3+ 11 Kh4 Ke5

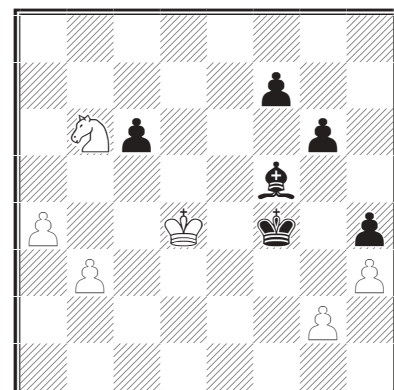
or 11...Rf1 12 Ra4+ Ke5 13 Ra6! when White wins similarly to the game because Black's King remains cut off.

12 Ra6! Rf8 13 Kh5 Rh8+ 14 Rh6 Rf8 15 g5 Kf5 16 Rh7! Rg8 17 Rf7+ Ke6 18 g6 Rh8+ 19 Kg5 Rh1 20 Rf2 Ke7 21 g7 Rg1+ 22 Kh6 Black resigns

White will reach the Lucena position after 22...Rh1+ 23 Kg6 Rg1+ 24 Kh7 Rh1+ 25 Kg8.

IV Each Side Has An Outside Passed Pawn: Who Wins?

GM Reuben Fine was both a world class player and author. His explanations of endgame principles have stood the test of



7

time. Particularly instructive is his comment regarding the above case. In *Basic Chess Endings*, 2nd Edition (1941), GM Fine says: "With two outside passed pawns (one for each side) one must get going as fast as one can, sit tight and hope for the best."

He gives as his illustrative example the position from Harry Nelson Pillsbury - Emanuel Lasker, St. Petersburg, 1895-96, Black on move - see Diagram 7. In the game GM Lasker lost as follows:

38 ... Be4? 39 a5 c5+ 40 Kxc5 Bxg2 41 a6 g5 42 Nd5+ Ke5 43 Ne3!! Bf3 44 b4 Ke6 45 b5 Be2 46 Nd5 Black resigns

The ending would have been 46 ... Bf3 47 b6! Bxd5 48 b7. Quite clearly White got his pawns going a lot faster than Black. GM Fine adds that "the above rule was ignored by Black who had to pay the penalty".

GM Fine also demonstrated the correct way for Black:

38...g5! 39 a5

Black also has the same drawing method after 39 Kc5 Bxh3! 40 gxh3 g4 41 a5 g3 42 a6 g2 43 a7 g1=Q+.

39 ... Bxh3! 40 gxh3 g4 41 a6 g3 42 a7 c2 43 a8=Q g1=Q+ 44 Kc3 Qe3+ 45 Kb2 Qxb6

"with equality" (GM Fine). Note how much faster Black got going compared to GM Lasker's 1...Be4?.

The Dreaded BDG

by Bruce Leverett

Why do gambits like the Blackmar-Diemer and the Smith-Morra look so threatening to average players, but get so little respect from masters? The answer has something to do with the familiarity of gambit play. If you don't defend gambits very often, you may tend to just clutch your pawn and huddle. Instead, you should exercise your whole brain, just as you do in even positions. Tactical alertness and willingness to try unconventional ideas are especially important.

Rob Nicholson - Don Meigs

Wild Card Open, July 31, 2001, Round 3
Blackmar-Diemer Gambit

1 d4 Nf6 2 Nc3 d5 3 e4 de4 4 f3 ef3 5 Nf3 Bg4

5 ... g6 and 5 ... e6 are also good choices.

6 Bf4?!

After the usual 6 h3, there can follow 6 ... Bxf3 7 Qxf3 c6 8 Be3 e6 9 Bd3, or 6 ... Bh5 7 g4 Bg6 8 Ne5, with some (but not

necessarily enough) compensation for the pawn in either case.

6 ... c6 7 Bc4

Black can now play 7 ... Bxf3, and White can't reply 8 Qxf3 because of simply 8 ... Qxd4. So 8 gxf3 is necessary, but White's new weaknesses and lack of any pressure on the f-file are devastating. This is why White had to play 6 h3.

7 ... e6?! 8 0-0 Bd6 9 Qd2 Bf3

White's knight is going to be strong on e5, especially in conjunction with the half-open f-file, so Black is correct to chop it off. But he should follow up by chopping off the black-squared bishop.

10 Rf3 Qe7? 11 Re1 0-0 12 Bg5!

Getting out of this bind is going to cost Black. If 12 ... h6? 13 Bxf6 gxf6 14 Qxh6 will force mate.

12 ... Nbd7 13 Rh3

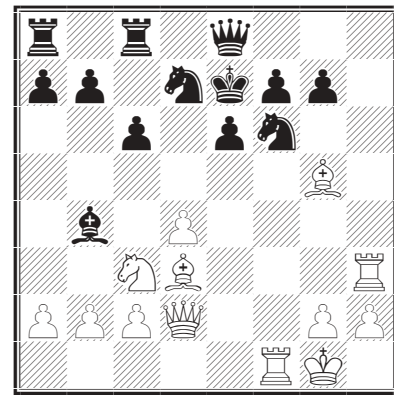
Now 13 ... h6 is answered by 14 Bxh6! gxh6 15 Qxh6, again forcing mate.

13 ... Rfc8 14 Bd3 Qe8 15 Rf1 Kf8!

Cold-blooded defense.

16 Bh7 Bb4 17 Bd3 Ke7??

17 ... Bxc3 first was necessary.



18 Nd5+!

Crushing.

18 ... cd5 19 Qb4+ Kd8 20 Bb5 Qf8 21 Qa4 Nb6 22 Rf6! gf6 23 Bf6+ Kc7 24 Rc3+ Nc4 25 Bc4 dc4 26 Rc4+ Kd6 27 Qb4+ Kd5 28 Qb5+

Even quicker was 28 Qxb7+, so that if 28 ... Kxc4 29 Qb3 mate, or 28 ... Kd6 29 Be5 mate.

28 ... Ke4

28 ... Kd6 would have lost to 29 Be5+ Kd7 (or Ke7) 30 Qxb7+, etc.

29 Qe5# 1-0

6th PCC 15-Minute Championship - July 10, 2001

#	Name	Pre Rat	Post Rat	Rd 1	Rd 2	Rd 3	Rd 4	Rd 5	Score	Prize
1	Magar, Thomas P	2118	2116	W6	W5	W4	D2	L3	3½	½ PCC Membership
2	Martinak, Tom M	2265	2250	W7	L4	W3	D1	W8	3½	½ PCC Membership
3	Nicholson, Rob	1707	1748	L5	W6	L2	W8	W1	3	
4	Prokhov, Vassil K	1919	1917	W8	W2	L1	D5	L7	2½	
5	Booth, James R	1998	1981	W3	L1	W7	D4	L6	2½	
6	Fetahagic, Denis	1726	1719	L1	L3	L8	W7	W5	2	
7	Foreman, Fred D	1673	1680	L2	W8	L5	L6	W4	2	
8	Schreiber, Avi J	1087/19	1143/24	L4	L7	W6	L3	L2	1	

Pittsburgh Chess Club Grand Prix

For the last 4 years we have been running a Grand Prix of tournaments held in the Pittsburgh area. In each tournament, every player receives Grand Prix points calculated by multiplying their score times the weight of the tournament. We then award prizes for the top 4 scorers in the Spring (January - April), Summer (May - August), Fall (September - December), and for the entire year. You can see your score posted at the Pittsburgh Chess Club and on the University of Pittsburgh website at <http://www.pitt.edu/~schach/> Good luck to everyone in the Fall season!

Spring GP Results

The Spring GP included a total of 9 events with 39 games and 74 possible GP points. 124 players participated and received Grand Prix Points. The prizewinners are:

Rank	Name	Points	Prize
1	Ryan R. Milisits	61	\$140
2	Michael P. Opaska	56½	\$90
3	Denis Fetahagic	50	\$70
4	Zhipeng Sun	40	\$50

And, the remaining top scorers include:

5	Papariella, Justin J	39
6	Datz, David	37½
7	Schragin, Jeff G	33½
8	Healy, Michael R	31½
9	Green, Kevin R	31
10	Desaw, Shawn	29
11	Van Sickle, Rodney J	26½
12	Guerrieri, Luis	26
13	Meigs, Donald J	23½
14	Klein, Charles W Jr	19
15	Castillo, Gonzalo	18
15	Eidemiller, Mark B	18
15	Schreiber, Jeffrey A	18
18	Gradsky, Benjamin M	17½
19	Ambrad, Antonio J	17
19	Duerig, Paul R	17
19	Martin, Steven A	17
22	Holsinger, Michael K	16½
22	Hoppmann, William H	16½
22	Moskowitz, Arthur	16½
22	Surma, Jeffrey F	16½
26	Prokhov, Vassil K	16
27	Atkociunas, Vitalijus	15
27	Schuh, Russell G	15
29	Antinone, Richard J	14
29	Magar, Thomas P	14
29	Schreiber, Avi J	14
32	Booth, Michael J	13½
32	Foreman, Fred D	13½
32	White, Welsh S	13½
35	Cummings, James S	12
35	Harshman, Philip E	12
35	Herman, James F	12
35	Nissly, Gregg J	12
35	Parker, Bradley W	12
40	Renk, Robert M	11½
41	Barbara, Richard P	11
41	Young, Jason	11

Summer GP Results

The Summer GP included a total of 8 events with 35 games and 87 possible GP points. 130 players participated and received Grand Prix Points. The prizewinners are:

Rank	Name	Points	Prize
1	Denis Fetahagic	56	\$140
2	Rob Nicholson	51	\$90
3	Luis Guerrieri	49½	\$70
4	Alex Duff	46½	\$50

And, the remaining top scorers include:

5	Booth, James R	45½
6	Magar, Thomas P	44
7	Opaska, Michael P	43½
8	Van Sickle, Rodney J	37½
9	Meigs, Donald J	33½
10	Feliachi, Nabil	31½
10	Papariella, Justin J	31½
12	Sun, Zhipeng	30½
13	Bell, William B	30
14	Kapinos, Clyde E	28½
15	Berthoud, Kevin F	27
15	Faller, John J	27
15	Fitzgibbons, Kevin J	27
18	Blair, David A	25½
18	Holsinger, Michael K	25½
20	Kirk, Daniel E	25
21	Harshman, Philip E	24
21	Kriventsov, FM Stanislav G	24
21	Malone, Zachary P	24
21	Sevillano, IM Enrico	24
21	White, Welsh S	24
26	Clary, Earl Jr	23
26	Hoppmann, William H	23
28	Atkociunas, Vitalijus	21
28	Chernoff, Dan H	21
30	Comer, David J	18
30	Foreman, Fred D	18
30	Mucerino, Joseph J Jr	18
30	Schragin, Jeff G	18
30	Schreiber, Avi J	18
35	Heimann, Alexander C	17½
36	Booth, Michael J	16½
36	Letterman, Joshua C	16½
38	Joseph, Bryan G	15
38	La Bue, Thomas	15
38	Schiff, Aaron J	15
38	Zeitler, John W	15
42	Wassell, Terry	14

31st Fred Thompson Memorial - June 10, 2001

1900 & Up

#	Name	Pre Rat	Post Rat	Rd 1	Rd 2	Rd 3	Rd 4	Score	Prize
1	Booth, James R	2071	2092	W5	W6	D2	W4	3½	\$90
2	Papariella, Justin J	1900	1973	W3	W4	D1	W5	3½	\$90
3	Meigs, Donald J	2026	2013	L2	W5	L4	D7	1½	
4	Magar, Thomas P	2205	2200	L6	L2	W3	L1	1	
5	Demetruk, David E	1986	1971	L1	L3	W6	L2	1	
6	Nicholson, Rob	2012	2008	W4	L1	L5	U-	1	
7	Schragin, Jeff G	1748	1757	U-	U-	U-	D3	½	

1700 to 1899

#	Name	Pre Rat	Post Rat	Rd 1	Rd 2	Rd 3	Rd 4	Score	Prize
1	Blair, David A	1826	1866	H-	W5	W4	W2	3½	\$100
2	Fetahagic, Denis	1731	1778	W5	W4	W3	L1	3	
3	Schragin, Jeff G	1757	1747	L4	W6	L2	B-	2	
4	Caliguire, John J	1849	1833	W3	L2	L1	U-	1	
5	Healy, Michael R	1749	1728	L2	L1	U-	U-	0	
6	Kapinos, Clyde E	1749	1735	U-	L3	U-	U-	0	

1500 to 1699

#	Name	Pre Rat	Post Rat	Rd 1	Rd 2	Rd 3	Rd 4	Score	Prize
1	Smith, Gerald S	1679	1692	L7	W3	W6	W2	3	\$100
2	Opaska, Michael P	1607	1625	D3	W7	W4	L1	2½	
3	Holsinger, Michael K	1574	1591	D2	L1	W8	W6	2½	
4	Zeitler, John W	1615	1618	W9	W6	L2	D5	2½	
5	Kapinos, Clyde E	1735	1719	L6	B-	W7	D4	2½	
6	Linderman, Bruce E	1550	1536	W5	L4	L1	L3	1	
7	Sun, Zhipeng	1599	1593	W1	L2	L5	U-	1	
8	Kligman, Yuzef	1485/17	1469/18	U-	U-	L3	U-	0	
9	Letterman, Joshua C	1054/05	1054/06	L4	U-	U-	U-	0	

1300 to 1499

#	Name	Pre Rat	Post Rat	Rd 1	Rd 2	Rd 3	Rd 4	Score	Prize
1	Wassell, Terry	1345	1477	W4	W2	W6	W7	4	\$100
2	Letterman, Joshua C	1054/06	1104/09	B-	L1	D5	W9	2½	
3	Joseph, Bryan G	1256	1345	W8	D6	L4	W5	2½	
4	Fitzgibbons, Kevin J	1466	1474	L1	W7	W3	H-	2½	
5	Danelle, David Donald	1365/18	1340/22	L6	W8	D2	L3	1½	
6	Schiff, Aaron J	1484	1470	W5	D3	L1	U-	1½	
7	Reilly, Dennis M	1385	1354	H-	L4	X-	L1	1½	
8	Datz, David	1451	1402	L3	L5	F-	U-	0	
9	Zhang, Tom C	807	796	U-	U-	U-	L2	0	

1100 to 1299

#	Name	Pre Rat	Post Rat	Rd 1	Rd 2	Rd 3	Rd 4	Score	Prize
1	Guerrieri, Luis	1288	1427	W9	W5	W2	W3	4	\$100
2	Van Sickle, Rodney J	1382	1387	W6	W3	L1	D5	2½	
3	Heimann, Mark A	1434	1409	W7	L2	W5	L1	2	
4	Heimann, Alexander C	1277	1310	W8	W7	U-	U-	2	
5	Bottorff, Timothy J	1248	1238	W10	L1	L3	D2	1½	
6	Ko, Alexander J	1123	1147	L2	W8	D7	U-	1½	
7	Wassell, James T	1141	1109	L3	L4	D6	D10	1	

61st Pittsburgh Chess Club Championship

January 23, 2001 to March 6, 2001

#	Name	Post Rat	Rd 1	Rd 2	Rd 3	Rd 4	Rd 5	Rd 6	Rd 7	Score	Prize
1	Milisits, Ryan R	2057	W19	H-	W13	W12	H-	W7	W4	6	PCC Membership
2	Schreiber, Jeffrey A	2051	W14	W6	W9	W7	D3	L4	W10	5½	
3	Castillo, Gonzalo	1925	W24	L13	W20	W14	D2	W5	W7	5½	
4	Ambrad, Antonio J	2022	W20	W17	L7	W13	W8	W2	L1	5	
5	Martin, Steven A	1755	W22	H-	L12	W15	W9	L3	W8	4½	
6	Schragin, Jeff G	1783	W23	L2	W19	L8	W16	D11	W13	4½	
7	Papariella, Justin J	1886	W8	W16	W4	L2	W10	L1	L3	4	
8	Opaska, Michael P	1632	L7	W25	W17	W6	L4	W14	L5	4	
9	Herman, James F	1850	W21	W15	L2	L10	L5	W18	W20	4	
10	Cummings, James S	1526	H-	D27	W16	W9	L7	B-	L2	4	
11	Sun, Zhipeng	1623	H-	L12	W21	D18	W24	D6	H-	4	
12	Duerig, Paul R	1836	H-	W11	W5	L1	D13	H-	H-	4	
13	Booth, Michael J	1751	W29	W3	L1	L4	D12	W22	L6	3½	
14	Crowell, Timothy M	1558	L2	W32	W24	L3	W18	L8	D15	3½	
15	Datz, David	1374	W18	L9	W32	L5	L21	W23	D14	3½	
16	Schuh, Russell G	1605	W25	L7	L10	W24	L6	W21	H-	3½	
17	Prokhov, Vassil K	1828	W31	L4	L8	W19	H-	D20	H-	3½	
18	Fetahagic, Denis	1740/19	L15	D21	W22	D11	L14	L9	W25	3	
19	Lokmer, John M	1502	L1	W23	L6	L17	L22	W26	W29	3	
20	Moskowitz, Arthur	1598	L4	W31	L3	W23	H-	D17	L9	3	
21	Nissly, Gregg J	1229	L9	D18	L11	W29	W15	L16	H-	3	
22	Green, Kevin R	1180	L5	H-	L18	W25	W19	L13	D24	3	
23	Hoppmann, William H	1039	L6	L19	W25	L20	W29	L15	W31	3	
24	Van Sickle, Rodney J	1260	L3	W29	L14	L16	L11	W31	D22	2½	
25	Griffin, Christopher	915/19	L16	L8	L23	L22	W31	W29	L18	2	
26	Ricca, Joseph E	1803	H-	H-	H-	U-	L27	L19	U-	1½	
27	Setterberg, Bert W Jr	1532	U-	D10	U-	U-	W26	U-	U-	1½	
28	Strychor, Rodney		H-	H-	H-	U-	U-	U-	U-	1½	
29	Bell, William B	707	L13	L24	W31	L21	L23	L25	L19	1	
30	Turpin, Glenn T	1043/11	U-	U-	U-	U-	U-	W33	U-	1	
31	Mrvos, Donald M	1015/24	L17	L20	L29	H-	L25	L24	L23	½	
32	Barr, Edward W	1567	H-	L14	L15	U-	U-	U-	U-	½	
33	Mahan, Charles E	953	U-	U-	U-	U-	U-	L30	U-	0	

This does not include the pre-event ratings due to problems with the USCF rating software, which have prevented the production of a correct final crosstable for this event.

31st Fred Thompson Memorial - 1100 to 1299

8	Faller, John J	1290		1246	L4	L6	W10	U-	1
9	Bashur, Michael F Jr	1146		1148	L1	W10	U-	U-	1
10	Ball, Gregory R	Unr		883/04	L5	L9	L8	D7	½

1099 & Under

#	Name	Pre Rat	Post Rat	Rd 1	Rd 2	Rd 3	Rd 4	Score	Prize
1	Duff, Alex	Unr	1238/04	W7	W5	D2	W3	3½	\$50
2	Orbison, Charles V	986	1065	W8	W4	D1	W6	3½	\$50
3	Beck, Paul W	Unr	1018/04	D5	W7	W4	L1	2½	
4	Schreiber, Avi J	1012	982	W6	L2	L3	W5	2	
5	Joseph, Geoffrey	749	772	D3	L1	W6	L4	1½	
6	Bell, William B	658	659	L4	W8	L5	L2	1	
7	Sun, LiAnn	748	759	L1	L3	W8	U-	1	
8	Zhang, Tom C	796	715	L2	L6	L7	B-	1	

14th Richard Abrams Memorial - May 15 to June 19, 2001

Championship

#	Name	Pre Rat	Post Rat	Rd 1	Rd 2	Rd 3	Rd 4	Rd 5	Rd 6	Score	Prize
1	Renk, Robert M	2095	2123	W8	W11	W3	D2	W13	W6	5½	\$182
2	Nicholson, Rob	2008	2027	W15	W19	W7	D1	W3	L4	4½	\$91
3	Meigs, Donald J	2013	2009	W9	W18	L1	W5	L2	W10	4	
4	Papariella, Justin J	1973	1988	W20	D5	W6	L13	H-	W2	4	\$42
5	Kirk, Daniel E	1829	1841	W23	D4	D10	L3	W15	W9	4	\$42
6	Schreiber, Jeffrey A	2032	2035	H-	W22	L4	W21	W7	L1	3½	
7	Booth, James R	2092	2078	W10	H-	L2	W16	L6	W12	3½	
8	Klein, Charles W Jr	1874	1861	L1	D15	L9	B-	W19	W17	3½	
9	Schragin, Jeff G	1747	1752	L3	W23	W8	L14	W24	L5	3	\$26
10	Healy, Michael R	1728	1747	L7	W20	D5	W11	H-	L3	3	\$26
11	Prokhov, Vassil K	1839	1830	W17	L1	L13	L10	X-	W16	3	
12	Moskowitz, Arthur	1613	1618	D14	L16	D15	W23	X-	L7	3	\$26
13	Magar, Thomas P	2200	2200	H-	H-	W11	W4	L1	U-	3	
14	Castillo, Gonzalo	1923	1928	D12	H-	W19	W9	U-	U-	3	
15	Kennedy, Kevin R	1705	1703	L2	D8	D12	W20	L5	H-	2½	
16	Fetahagic, Denis	1778	1769	D21	W12	H-	L7	D17	L11	2½	
17	Lokmer, John M	1438	1460	L11	H-	D22	W18	D16	L8	2½	\$35
18	Nissly, Gregg J	1229	1266	H-	L3	L20	L17	W23	W22	2½	\$35
19	Duerig, Paul R	1804	1787	W25	L2	L14	H-	L8	D21	2	
20	Crowell, Timothy M	1558	1545	L4	L10	W18	L15	F-	W23	2	
21	Ambrad, Antonio J	2000	2000	D16	H-	H-	L6	F-	D19	2	
22	Schuh, Russell G	1609	1600	H-	L6	D17	H-	U-	L18	1½	
23	Hoppmann, William H	1036	1021	L5	L9	B-	L12	L18	L20	1	
24	Opaska, Michael P	1625	1614	U-	U-	U-	U-	L9	U-	0	
25	Bell, William B	659	658	L19	U-	U-	U-	U-	U-	0	

Booster

#	Name	Pre Rat	Post Rat	Rd 1	Rd 2	Rd 3	Rd 4	Rd 5	Rd 6	Score	Prize
1	Sun, Zhipeng	1593	1610	H-	W8	W2	W7	W3	D4	5	1st Place Trophy
2	Opaska, Michael P	1614	1603	W7	W3	L1	D5	B-	W6	4½	2nd Place Trophy
3	Green, Kevin R	1192	1275	W6	L2	W5	W8	L1	B-	4	3rd Place Ribbon
4	Van Sickle, Rodney J	1387	1391	H-	H-	L7	W6	W8	D1	3½	
5	Browne, William J	1404	1400	H-	W9	L3	D2	L6	W8	3	
6	Reilly, Dennis M	1354	1329	L3	H-	W8	L4	W5	L2	2½	
7	Barbara, Richard P	1303	1317	L2	B-	W4	L1	H-	U-	2½	
8	Bell, William B	658	653	B-	L1	L6	L3	L4	L5	1	
9	Blocki, Jeremiah	1342	1329	U-	L5	W11	U-	U-	U-	1	
10	Cummings, James S			H-	H-	U-	U-	U-	U-	1	
11	Hoppmann, William H	1021	1012	U-	U-	L9	U-	U-	U-	0	

2001 PCC Senior Championship - June 23, 2001

#	Name	Pre Rat	Post Rat	Rd 1	Rd 2	Rd 3	Score	Prize
1	Prokhov, Vassil K	1909	1919	W10	W3	W2	3	PCC Membership
2	Foreman, Fred D	1661	1673	W6	W7	L1	2	
3	Clary, Earl Jr	1600	1612	W11	L1	W7	2	PCC Membership
4	Reilly, Dennis M	1341/13	1389/16	L7	W11	W8	2	
5	Meigs, Donald J	1997	1974	L9	D8	W10	1½	
6	Bauer, H George	1377/10	1380/13	L2	D10	W11	1½	
7	Jones, Lawrence P	1630	1607	W4	L2	L3	1	
8	Setterberg, Bert W Jr	1631	1618	H-	D5	L4	1	
9	Lokmer, John M	1582	1613	W5	U-	U-	1	
10	Berthoud, Eric A	1521	1509	L1	D6	L5	½	
11	Bell, William B	678	675	L3	L4	L6	0	