



# The PENNSWOODPUSHER



March 2006

A Quarterly Publication of the Pennsylvania State Chess Federation

Unfortunately, for personal reasons I am no longer able to continue as editor of *The Pennswoodpusher*. This will be my final issue. Thanks to the members of the PSCF for allowing me to edit their magazine for the past four years, and to all the columnists and contributors who allowed me to publish their words and games.

If you are interested in working as editor, or in some other capacity, please contact Tom Martinak.

Cordially,  
Neil Brennen

## Who are the 2006 Eastern PA Team champs? by Dr. Ira Lee Riddle, Chief T.D.

Traditionally, when an open tournament is held for a state championship, anyone is allowed to win first place money, but only a state resident is allowed to claim the state title itself. On that basis, MBF Retired, which finished in a tie for third place overall, has been declared the Eastern PA team champs. The team is composed of Ray Robinson, Jeff Johnson, Larry Pugh and Shelley Mays.

The top team, Balancing Act, came down from NYC, and included former USCF President Beatrice Marinello. They wound up 4-0; in second place were the South Jersey Devils, led by former USCF President Leroy Dubeck, who played Marinello during their teams' match in Round 2. Even though two members of this team would be considered PSCF players (Dubeck is a PSCF Life Member and Richard Costigan is usually still thought of as a Philly player), the other two players are not PA related.

The tournament drew only 7 teams in the Open section, and may be on its final legs as an Open event. It was held on Saturday, January 7th, probably too early for teams to use it as practice for the US Amateur Team East, but that was the only available date for the site.

There were three scholastic sections, one of them an unrated ASAP section. In the Same School section there were 14 teams, up from 10 the previous time. Teams from Julia Masterman School of Philly led the way. With a 4-0 record were "Ereub," comprised of Eric Augenbraun, Reuben Hampton, Julian Smyth and Joel Fagliano. Just behind at 3½-½ were "Jujoe," made up of Caesar Bautista, James McTeague, Anthony Janczewski and Brandon Walker.

The Scholastic-Reserve section was down from 28 teams to 9. Tied for first with 3½-½ were the team named "Barney" and Montgomery County A. Barney's members were Andrew Spore, Peter Weida, Marland Sitt, and Carl Gallagher. Montgomery-A had Erica McLaughlin, Steve McLaughlin Jr., Ethan Myers, and Matthew Myers.

The ASAP (After Schools Activity Program) section did not keep final records, but had over 10 teams in the non-rated section. Most likely, this affected overall rated attendance.

Problems continued with getting the tournament finished before the College kicked us out. CCP was still "closed" due to Inter-semester break, but with ASAP's influence, we were allowed its usage. Rounds were cut from 5 to 4, time controls were cut to mostly game/30, and the tournament still went to almost 5pm before finishing. Players just

seem to want to sit around and gab before starting a round! After much discussion, a new and improved system of registration was set up to help get started on time. That lasted until the first coach came in with more problems than not.

Overall, a good time was had by all. Assistant tournament directors were Steve Shutt, Caitlin Caslett, Steve McLaughlin, and Ben Cooper of ASAP.

## PA TODAY

Tournament and Club News from around the Keystone State  
by Joe Mucerino, Roving Reporter  
patzerpounder@hotmail.com

## 8th Pennsylvania Quick Championship

CARLISLE - On the eve of the State Scholastic Championship (unless you are playing in the K-12 Open section) and the Carlisle Open, adults and kids alike can take part in the commonwealth's largest quick (G/10) championship. This year we had 93 players, not much different from last year's tally of 97. No different was the winner: Gerald Bailleau won once again, the fourth year in a row he has won or tied for first place! I am sure he still would have won even if he did not warm up by easily winning two games of pool against me before we started!

There were no real upsets in the first round. Some of the top players began facing each other in the second round. Bailleau defeated your author in a game that was closer than our two pool matches. Peter Minear drew Franklin Chen, Tom Magar defeated Daniel Yeager, and Khanh Huu Thai bested Josh Bowman. The favorites had a break in the next round, with Magar 0-1 Bailleau being the only game between the top players. Bailleau was now the only player with a perfect score, and he continued that trend against Minear in round four. Yeager defeated Bowman, Magar did the same to Thai, and my Englund Gambit (1.d4 e5) did well against Chen.

In the penultimate round, Yeager finally slowed Bailleau with a draw, my Englund Gambit scored a half point against Magar, and all of the other favorites won. Bailleau now only needed a draw with white in the final round, and that is what he did, against Thai. He finished with 5/6. Minear beat Magar, and Yeager smashed me to tie for second a half point back. Danijel Lolic won the U1500 section with 5½ points, and Benjamin Strauss in the U1100 section was the only person to finish with a perfect 6-0 score.

## Carlisle Open

CARLISLE - The State Scholastic Championship is not just for kids, there is a section for adults and college students too! Sixty-two players took part, down from last year, because not as many college students took part, and one of my buddies thought the tournament was being held on the following weekend. <Sigh> Oh well, we all had a good time.

Omar Rivera had the best time of all, sweeping the event 5-0. Except for a draw between Tom Magar and Derek Fisher in the second round,

all of the upsets were on the lower half of the pairing chart in the first two rounds. In round 3, I received quite a shock: to my delight I was paired with white against Lee Boland, rated 1507. Boland upset Leteef Street in the first round, and had a forfeit victory in the second, but, with white, I thought I should win fairly easily. Instead, my kingside attack came to nothing, and, in Boland's time pressure, he broke through in time pressure with a brilliant move which, not so obviously, won my queen. Boland has been climbing the ropes fast: he was picked up on average about fifty rating points in his last few tournaments. In this one he gained ninety-five points, and he is not provisionally rated! Good for him! In the same round, Franklin Chen defeated Peter Minear in a time scramble where both had one second left (with a five second delay) on their clock! Magar drew Ryan Ferguson, and Rivera beat Tyler Lelis, who missed the scholastic sections so he could play against stronger opposition.

On Sunday, Boland's Cinderella tournament came to an end when he met Rivera. Magar and Minear posted victories, but Fisher, Chen and I all drew. In the money round, Rivera, with a perfect score, defeated Chen, the only player with 3½ points. Magar defeated Boland to finish in clear second with four points. Minear and Fisher drew to also finish with 3½. Duane Smith upset Lelis, and I crushed Ronald Raush to enter the tie for third place.

In the under 1500 section, Jahaade Adams finished in clear first with 4½ points. Tying for second were Eric Legore (an unrated!), Ernest Sharif, and Alan Coulter.

Among the colleges, Penn State University was the top team with the University of Pittsburgh and Temple University in a tie for second.

## PSCF Scholastic Championship

CARLISLE – Here are all of the prizewinners in the open sections:

### K to 12 Open (6 rounds, G/90)

Score	Name	Prize
5½	Yeager, Daniel A	1st Place & PA HS Champion
5	Lynn, Bennett M	2nd Place & PA 12th Grade Champion
5	Waruszewski, Bob C	3rd Place & PA 11th Grade Champion
4½	Tadevosyan, Ara	4th Place
4½	Hsiao, Thomas	5th Place
4	Shah, Davesh K	6th Place
4	Russell, Matthew C	7th Place
4	Pandya, Manan J	8th Place
4	Guziak, Alex M	9th Place & PA 10th Grade Champion
4	Hickman, Michael A	10th Place
4	Chu, Emily J	1st Place (U1800)
4	Glinsky, Luka E	PA 9th Grade Co-Champion
4	Ames, Evan	1st Place (U1600) & PA 9th Grade Co-Champion
4	Blaise, Christopher S Jr	PA 9th Grade Co-Champion
4	Lichtenberg, Ross D	10th Place Medal
3½	Hayward, Michael A	1st Place (U1400)
2	Lee, Wing	1st Place (Unrated)
2	Sinha, Rohit	2nd Place (Unrated)

Score	Team Name	Prize
15½	Allentown Center City Chess Club	1st Place (Club)
14	Conestoga High School	1st Place (School)
12	George Washington High School	2nd Place (School)
12	Pennsbury High School	3rd Place (School)
11½	Pocono Mountain East High School	4th Place (School)
11½	State College Area High School	5th Place (School)

### K to 8 Open (5 rounds, G/90)

Score	Name	Prize
5	Bowman, Joshua A	1st Place & PA K-8 Champion
4	Weida, Peter T	2nd Place & PA 7th Grade Champion
4	Mc Laughlin, Steven J Jr	3rd Place & PA 8th Grade Champion
3½	Fisher, Benjamin E	4th Place
3½	Kantor, Andrew G	5th Place
3½	Smyth, Julian D	6th Place
3½	Wu, James	7th Place
3½	Snyder, James A	8th Place
3	Fagliano, Joel	9th Place
3	Bautista, Caesar	10th Place
3	Spokauskas, Nicholas M	1st Place (U1200)
2½	Schwartzbauer, Brendon	1st Place (Unrated)
2	Guyler, John	2nd Place (Unrated)
2	Winkelman, Matthew	1st Place (U800)
½	Reasey, Samantha	3rd Place (Unrated)

Score	Team Name	Prize
14½	Montgomery Youth Chess Club	1st Place (Club)
13	Julia R Masterman School	1st Place (School)
11	Pittsburgh Youth Chess Dragons	2nd Place (Club)
9	Bethel Christian Academy	2nd Place (School)

### K to 6 Open (5 rounds, G/90)

Score	Name	Prize
5	Sakai, Hibiki	1st Place & PA Elementary Champion
4½	Mo, Kevin	2nd Place & PA 5th Grade Champion
4	Denduluri, Praneeth	3rd Place
4	Nimgaonkar, Vivek U	4th Place & PA 6th Grade Champion
3½	Strauss, Benjamin L	5th Place & PA 4th Grade Co-Champion
3½	Balter, Danny	6th Place & PA 4th Grade Co-Champion
3	Gough, Randall W	7th Place
3	Wainstein, Lenny	8th Place
3	Lakata, David A	9th Place
3	Yan, Gaibo	10th Place
3	Molin, Ben	10th Place Medal
3	Linsuain, Kemen	10th Place Medal
3	Rajgopal, Prem	10th Place Medal
2½	St Clare, Sydney	1st Place (U1100)
2½	Snyder, Paul X	1st Place (U900)
2½	Rong, Jesse	1st Place (U1100) Medal
1	Jones, Brandon	1st Place (Unrated)
1	Bradley, Thomas	2nd Place (Unrated)

Score	Team Name	Prize
16½	Pittsburgh Youth Chess Dragons	1st Place (Club)
9	Julia R Masterman School	1st Place (School)
8½	Murray Avenue School	2nd Place (School)

### K to 3 Open (5 rounds, G/40)

Score	Name	Prize
4½	Furuhata, Kota	1st Place & PA Primary Co-Champion
4½	Moolten, Odette	2nd Place & PA Primary Co-Champion
4	Curtis, Andre	3rd Place & PA 2nd Grade Co-Champion
4	Kleinfeld, Jonathan J	4th Place & PA 3rd Grade Co-Champion
4	Patel, Krishna	5th Place & PA 3rd Grade Co-Champion
4	Strong, Boston	6th Place & PA 3rd Grade Co-Champion
4	Buss, Christopher	7th Place & PA 2nd Grade Co-Champion
4	Zhang, Alexander	8th Place & PA 1st Grade Co-Champion
4	Budejen-Jerez, Alejandro	9th Place & PA 1st Grade Co-Champ

3	Gershanok, Sam	10th Place
3	Chen, David	1st Place (U800)
3	Zhang, Jeffrey	1st Place (U600)
2½	Tiday, Gabe J	1st Place (Unrated) & PA Kindergarden Champ
2	Tepper, Lucia	2nd Place (Unrated)
2	Griffie, Jared	3rd Place (Unrated)
2	Kenney, Benjamin Z	3rd Place (Unrated) Medal
2	Tiday, Luke N	3rd Place (Unrated) Medal
2	Dibble, Anna M	3rd Place (Unrated) Medal
2	Friedman, Sanjana	3rd Place (Unrated) Medal

Score	Team Name	Prize
14½	Pittsburgh Youth Chess Dragons	1st Place (Club)
10	The Philadelphia School	1st Place (School)

And the top scorers in the class sections:

**K to 12 U1300:**

5	Lolic, Danijel	1st Place
4½	Weiner, Mark	2nd Place
4½	Hoffman, Mitchell J	3rd Place
15	Gettysburg High School	1st Place (School)
13	Pgh Youth Chess Dragons	1st Place (Club)

**K to 12 U1000:**

5	Ebert, Scott	1st Place
4½	Gorman, Matt	2nd Place
4½	O'Brien, Matt	3rd Place
4½	Clement, James	4th Place
4½	Mahalak, Dave	5th Place
17½	Parkland High School	1st Place (School)
12	Monroeville Chess Club	1st Place (Club)

**K to 9 U1000:**

4½	Watson, Leon L	1st Place
4½	Mitchell, Shawn M	2nd Place
4½	Rao, Rohith	3rd Place
15	Pgh Youth Chess Dragons	1st Place (Club)
14	Pocono Mountain East	1st Place (School)

**K to 6 U800:**

5	Goldstein, Noah	1st Place
5	Donow, Samuel	2nd Place
13½	Blair Bishops Chess Club	1st Place (Club)
9	Bethel Christian	1st Place (School)

### 38th Annual Liberty Bell Open

PHILADELPHIA - This was the last of the big three Continental Chess Association events to make the move from Adams Mark Hotel to the Wyndham Hotel. To the naked eye, attendance appeared to be down slightly, but in fact, there were 343 players, including re-entries, and prizes were raised by four percent.

In the open section, the grandmasters had no problem, and all of them shared first place with IM David Vigorito with 5½/7 points. Vigorito lost to GM Sergey Kudrin in round four, but other than that, the cowinners were undefeated. I played in the open to try to collect master scalps, but I came up empty, and my 2½ points were earned against non-masters.

Here are the sectional winners:

Open: Jaan Ehvest, Alexander Shabalov, Sergey Kudrin, Aleks Wojtkiewicz and David Vigorito 5½  
 Top PA: Shabalov  
 Top NJ: Boris Privman 5

U2200: Travis Patay and Bora Yagiz 5½  
 Top PA: Evan Post and Dan Yeager 4½  
 Top NJ: Ivan Joyner and Andrew Ng 4

U2000: Luka Glinsky and Maxwell Schwartz 6  
 Top PA: Glinsky  
 Top NJ: Rachel Jatovsky, Colin Williams, Victor Rosas and Ronald Saylo 5

U1800: Ramesh Balasubramanian, Lamont Rogers and David Kolb 6  
 Top PA: R Andrew Spore 5  
 Top NJ: Matthew Pielichowski 5

U1600: Khalid Masood and Jeremiah Williams 6  
 Top PA: Masood  
 Top NJ: Williams

Note: Masood was an unrated and Williams had a provisional rating!  
 Congratulations to both of them!

U1400: Brian Bucher 6½  
 Top PA: Bucher  
 Top NJ: Thomas Rogers 5

U1200: Odette Moolten 6½  
 Top PA: Moolten  
 Top NJ: Edward Lim 5½

**Evan A. Post (2131) - Glenn D. Umstead (2095)**  
**38th Annual Liberty Bell Open, U2200, Round 1, 1/14/2006**  
*Annotations by Joseph J. Mucerino, Jr.*

**1. Nc3 c5 2. Nf3 a6 3. e4 e6 4. g3 b5 5. Bg2 Bb7 6. d3 d6 7. O-O Nd7 8. a4 Bc6 9. d4 b4 10. d5 Bb7 11. dxe6 bxc3 12. exd7+ Qxd7 13. e5!**

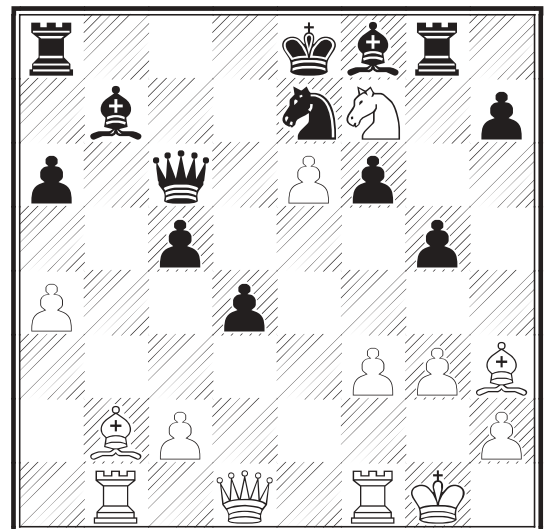
Trying to open lines to black's uncastled king.

**13...cxb2 14. Bxb2 d5 15.Ng5**

Also possible is the immediate 15.e6. If 15...Qxe6 16.Re1; 15...fxe6 16.Ne5 followed by 16.Qh5+; and if 15...Qc7, for example, Fritz played 16.Ng5, with a continuation similar to the game.

**15...Ne7 16. Bh3 Qc6 17. e6 f6 18. Nf7 d4 19. f3 Rg8 20. Rb1 g5??**

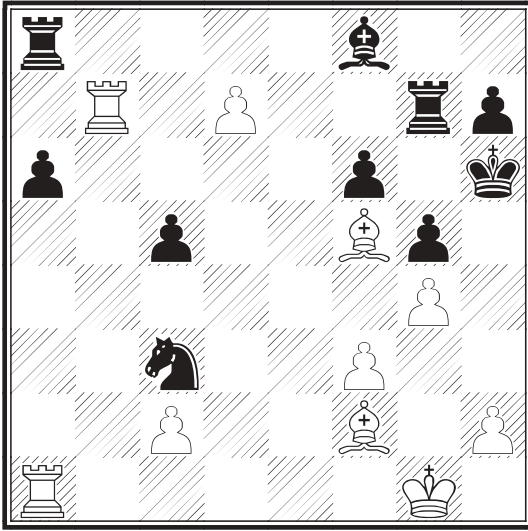
Black missed white's next move. Fritz suggests 20...Nd5.



**21. Bxd4!**

Now if 21...cxd4 22.Rxb7! and if 22...Qxb7 23.Nd6+ wins the queen. Had black played 20...Nd5, the bishop on f8 would have covered the d6 square against the fork.

21...Nd5 22.Bf2 Nc3 23. Qd7+ Qxd7 24. exd7+ Kxf7 25. Rxb7 Kg6 26. Be6 Rg7 27. g4 Nxa4 28. Bf5+ Kh6 29. Ra1 Nc3



### 30. Rxa6!!

Fritz gave this move two exclamation marks! I very rarely see that! Of course, if 30...Rxa6 31.d8Q.

30...Rd8 31. Rxf6+ Rg6 32. Bxg6 hxg6 33. Rxf8! Rxf8 34. Bxc5 Ne2+ 35. Kf2 Ra8 36. Kxe2 Rd8 37. Be7 1-0

A wonderful tactical game!

### Rene W. Phillips (2113) - Evan A. Post (2131)

38th Annual Liberty Bell Open, U2200, Round 2, 1/14/2006

Annotations by Joseph J. Mucerino, Jr.

1. d4 d6 2. Nf3 Bg4 3. Bf4 c6 4. c3 Qb6 5. Qb3 Nd7 6. Nbd2 Ngf6 7. h3 Be6 8. Qc2 h6 9. e4 g6 10. Bd3 Bg7 11. O-O O-O 12. c4 Rfc8 13. Be3 Qd8 14. Qb1 Nf8 15. e5 Ne8 16. Bf4 Qd7 17. Re1 b6 18. Be4 d5 19. Bd3 dxc4 20. Nxc4 Nc7 21. Ne3 Bd5 22. Nh2 Nfe6 23. Nxd5 Nxd5 24. Bd2 Nxd4 25. Ng4 Kh7 26. Qc1 h5 27. Nh2 Ne6 28. Qd1 Rd8 29. Qxh5+ Kg8 30. Qf3 Ndf4 31. Bxf4 Qxd3 32. Be3 Qb5 33. Ng4 Rd3 34. Qe4 Rad8 35. Rac1 c5 36. Rc3 Rxc3 37. bxc3 Qd3 38. Qb7 Qd7 39. Qa6 Qc6 40. Qxa7 Nc7 41. Rb1 Nd5 42. c4 Nxe3 43. fxe3?

White tries to hang on to the pawn on e5 square, but this move is very weakening, and the pawn will fall anyway.

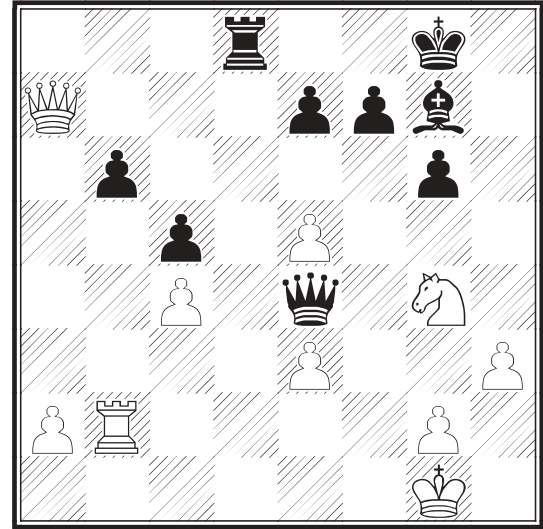
### Pennswoodpusher Editorship

As you know from page 1, Neil Brennen is no longer able to continue as editor. He has done a wonderful job over the last four plus years and in doing so has made my job as PSCF President much easier. For this issue of PWP, Neil prepared the material in MS Word and I did the layout in Pagemaker. My plan is to be Interim Editor for the May and August issues while we look for a new long-term editor. Anyone who is interested in becoming editor should contact me. We have been happy with all the writers and hope that they will continue to provide material. And we are always interested in new submissions and ideas for columns and articles.

- Tom Martinak

### 43...Qe4 44. Rb2??

The rook is too loose. White should protect it with 44.Rf1.



### 44...Bxe5

Fritz found 44... Rd1+ 45. Kf2 (or 45.Kh2 Bxe5+ 46.Nxe5 Qxe5+) Qf5+ 46. Kg3 (not 46.Ke2?? Qf1 mate) Bxe5+ 47. Nxe5 Qxe5+.

### 45. Nxe5 Qxe3+ 0-1

If 46.Rf2, 46...Rd1+ wins the rook on f2.

## North Penn CC Membership Drive

LANSDALE - This is the most popular of the North Penn Chess Club's Friday night events, and this year thirty-three people contested what is, in effect, the club championship. No masters took part, but there were three experts: Eric Funk, your author, and the defending champion, Curtis Schwartz.

The biggest upsets in the first round were Michael Sena (1057) over Don Funk (1821), and Dan Frederick (1486) playing solidly to draw Preston Ladson (1980). In round two, I was held to a draw by Robert Kampia. I was up a rook, but it was very poorly placed, and Kampia had great pressure on my position. In my attempt to get my wayward rook into the game, I overlooked a check by Kampia. I had two responses to the check: allow a mate in one, or allow a perpetual check. Guess which one I chose. The third round was sensational: Tony Koppany, at age 87, the second oldest active player in Pennsylvania (Peter Chopping is one year older) defeated Schwartz and moved into clear first place! Four players had 2½ points, and Koppany had to play the highest rated of those four, which was myself. In a very long game, which came down to a bishop verses knight ending (I had the bishop) I missed an easy win in time pressure, and wound up drawing. Eric Funk defeated Stephen Brod, and Nigel Mitchell beat Joe Kennedy. Koppany, Eric Funk, and Mitchell were all tied entering the final round. Sadly, Tony Koppany lost to John Frisk (although this result is not reflected on the crosstable - both have "U"s for the final round). In the championship game, Nigel Mitchell beat Eric Funk to take the title. Schwartz, Frisk, and myself tied for second, with four points.

NOTE: When looking at the crosstable, it should be noted that many byes (both half and full point) were marked as "U"s, although on the crosstable used in the tournament, those points were credited to the players who deserved them.

## Last Club Games of 2005 Swiss and 11th Annual Rausch Memorial New Year's Eve Insanity

ALLENTOWN - It has been a tradition in Allentown to have a large, eight round G/30 tournament to ring in the New Year. This year was a bit different, though. Since New Year's Eve fell on a Saturday, the Center City Chess Club decided to hold its weekly rated event as usual, and then, after a dinner break, carry those scores over into the Insanity tournament. The goal was to leave at about 1:30 in the morning instead of the usual 4:30.

The Last Club Games of 2005 Swiss was a three round, G/40 event, which is the time control the club normally uses. Because there were more than twenty players, the tournament was divided into two sections with two prize funds. I had won the 2004-2005 Insanity event on the first day of 2005, and I wanted to win this three round event which ended on the last day of 2005.

I got off to a good start by defeating one of my *bete noires*, (*watch it with the foreign phrases, Mucerino! - editor*) Derek Fisher, in the first round. The fast improving Richard Blank shocked TD Eric Johnson, U.S. Amateur East Champion Dan Yeager conceded half a point to Rick Baranchak, and David Locke, who now lives in Arizona, drew New Jersey's Steve Ferrero. These were some very strong first round pairings indeed. In the second frame, Baranchak kept up his fine tournament by drawing Johnson. I beat Mike Cox, and Jack Mongilutz defeated Gregory Nolan to become co-leaders of the top section. In the Mucerino-Mongilutz game, Mongilutz, another of my *bete noires*, (*you have already been warned once - editor*) kept up the pressure, but I was able to achieve a level position. Mongilutz rejected my draw offer, and later blundered into a mate in two. I had won the first tournament, and achieved my goal! William Bybel and Ben Fisher tied for first in the lower group with 2½ points each.

After dinner, the remainder of the tournament, five G/30 games, began. The players' scores carried over, regardless of which section they played in, although most of the lower rated players decided only to play in the Saturday tournament. On board one, I fought to a draw with black against Yeager. Nolan easily demolished Bybel from the lower section on board two. In round five, I had to play Nolan, yet another *bete noire* (*Enough! Enough! - editor*), and drew. Although I began to tire, I at least was doing well against people who have historically done well against me. Yeager beat Mongilutz to catch up to me. Mongilutz, who kept saying, "I'll play one more round, I'll play one more round" withdrew after this loss. Many of the other top players won as well. In round six, I missed a win against Locke, then blundered an exchange, but wound up drawing after I won a few pawns back in Locke's time pressure. Yeager checkmated Nolan with black to take the outright lead. Blank defeated Bybel to win his third game in a row, and Fisher, who had not lost since he lost to me in the first round, continued his hot streak against Cox. Young Dan Yeager, now on top board, had to begin 2006 by facing one of his *bete noires* (*sigh. - editor*), Richard Blank, and drew. I drew my fourth game in a row against Johnson in a very unclear position. Locke beat Cox, and Fisher bested Nolan. In the final round, I had to win and hope that Yeager did not in order to achieve a tie for first, but once Yeager found a cheap mate against Fisher, it was all over. Yeager finished with a score of 6½/8. For the third year in a row, I was paired with Blank in the final round, and each year my result improved: loss, draw, and now a win. I took clear second with six points. David Locke finished in third place after beating Johnson. Tying for fourth were Blank, Fisher, and Chris Rhodes, who lost his first three and then won five in a row. Hats off to Leo Welsh, who was the lowest rated player to play in all eight rounds.

## Chaturanga Chess Club Championship

HATBORO - It had to happen. I finally was unable to successfully defend one of my club titles. (*Oh the inhumanity! - editor*) Upsets began as early as the first round, with Joe Kennedy beating Ron Stokes and Ray Intravaia besting Robert Leonards. In the next round, I showed the first chink in my armor by drawing Dennis Baluk after I was up a pawn with a better position. Top rated Gennadiy Geyler lost to Phil Stephano and withdrew. Things did not improve in the next frame. Again, I was held to a draw after achieving a better position against Joe Rossi (although was better later in the game). Most of the leaders drew, and TD Jorge Amador beat PSCF treasurer Stan Booz to cause a big tie for first with 2½. After two blacks in a row, I was forced white, and I needed a win against one of my *bete noires* to stay in the hunt.

### Joseph J. Mucerino, Jr. (2069) - Adrian D. Benton (1787) Chaturanga CC Championship, Round 4, 9/29/2005 Annotations by Joseph J. Mucerino, Jr.

I had a +0 -2 =1 score against Benton going into this game. Both losses were with white! Now was a good time to change the pattern, especially since Benton looked a bit under the weather.

#### 1. d4 d5 2. Nf3 Bf5 3. Bg5 Nf6 4. e3 e6 5. Bd3 Bd6?!

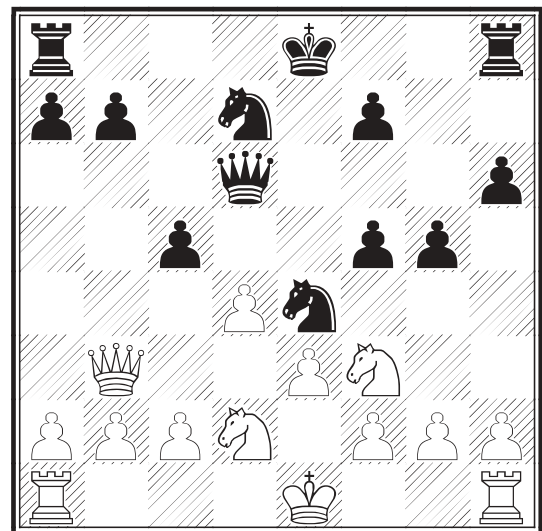
This loses a pawn. Black should play 5...h6 or trade on d3.

#### 6. Bxf5 exf5 7. Qd3 h6 8. Bh4 g5 9. Bg3 Ne4 10. Qb5+ Nd7 11. Qxd5

I did not to allow Benton any counterplay, so I did not capture on b7 and allow ...Rb8.

#### 11...Qf6 12. Bxd6 c6 13. Qb3 Qxd6 14. Nbd2 c5?

This allows a good shot...



#### 15. Nc4

...but I miss it. White can win more material with 15.Nxe4 fxe4 16. Qxb7 O-O 17. Qxe4.

#### 15... Qe7?

The queen had to go on c7, because now my knight on c4 protects the pawn on b2 from an attack by the rook.

#### 16. Qxb7 O-O 17. Nce5

Fritz preferred putting the other knight on e5. I was trying to play it safe, and I was afraid that the knight on c4 could become loose, and possibly captured after a possible ...Qb4+.

**17... cxd4 18. exd4!**

Fritz said 18. Qxd7 "MIGHT BE the shorter path" (my emphasis) and continued the line with 18...Qb4+ 19. c3 dxc3. Now, if I castle, he has 20...cxb2, and it is easier for black to bring his rooks into the game. Despite my extra piece, and the possibility of picking up the pawn on f5, I do not really have a serious attack going, so black definitely has some compensation. My move prevents black from playing 18...Nec5, giving black the initiative.

**18... Rfd8 19. O-O**

Fritz liked the obvious 19. Nc6, but I avoided it, because I was afraid of a discovered check. Of course if black plays the discovered check now (either 19...Nc5 or 19...Nd6), I can capture his queen with check. But after 19...Qe8, white has to be careful. I did not want to worry about that, so I simply castled. Note I castled kingside because I was afraid black might but his rooks on the b and c filed to get an attack going. The pawns on f5 and g5 did not worry me because black did not have much of a follow up after pushing these pawns.

**19... g4?**

Desperate. Black had to try something like 19... Qd6 to avoid being forked.

**20. Nc6 Qf6 21. Nfe5 Nd6 22.Nxd7 Qh4 23.Qc7 Ne8 24.Qg3 Qg5 25. Nxd8 Rxd8 26. Rfe1 f4**

For a moment, I thought I had a awesome tactic with 27.Qxg4 Qxg4 28.Rxe8+ Rxe8 29.Nf6+, with a family fork. However, black can play 28...Kg7, and, although which still has a material plus after 29.Rxd8, his pieces are not the best coordinated, and black could still stir up trouble.

**27.Qa3 Ng7 28. Qe7 Qa5 29. Re5 1-0**

That was so much easier than the above note. If 29...Qc7, 30.Nf6+ wins the queen.

But the win did not help me too much. Stephano beat Amador, Baluk beat Manan Pandya, and Ed McKenney beat Randy Slepion. Stephano-McKenney, both with 3½ points, was the top board pairing in the final round. I was black against Slepion, and I would have to win and hope Stephano-McKenney was a draw in order to tie. It did not happen. I pressed, and I had a slight advantage, but then Slepion, in time pressure, won a pawn and offered a draw. Without any winning chances, I accepted. Stephano looked to me liked he had an advantage, but McKenney hung in there, and their game was also drawn. Baluk beat Alan Lindy to enter into a three way tie with Stephano and Baluk.

---

## Main Line Chess Club Championship

GLADWYNE - Yes, in fall, there are lots of club championships in eastern Pennsylvania. This is the only one with two sections: the unrated open section (to try to attract masters who are afraid to put their ratings on the line), and the rated U1800 section.

Attracting masters did not work quite so well this year, as the number of masters who played decreased fifty percent from last year (four down to two). Like last year, I had white against the top rated player. My opponent was FM Peter Fleischer, and although I had a different opponent this year, the result stayed the same - a loss. The other master, NM Dan Heisman, drew Richard Pariseau, and there were no surprises on the lower boards.

In round two, there was an upset: Steve Stepanian avenged his defeat against Heisman from last year (see the November 2004 issue, page 11). Fleischer beat Don Conner, and I got on the board with this victory:

**Arnold B. Shafritz (1800) - Joseph J. Mucerino, Jr. (2048)**

**Main Line CC Championship, Open Section, Round 2, 11/1/2005**

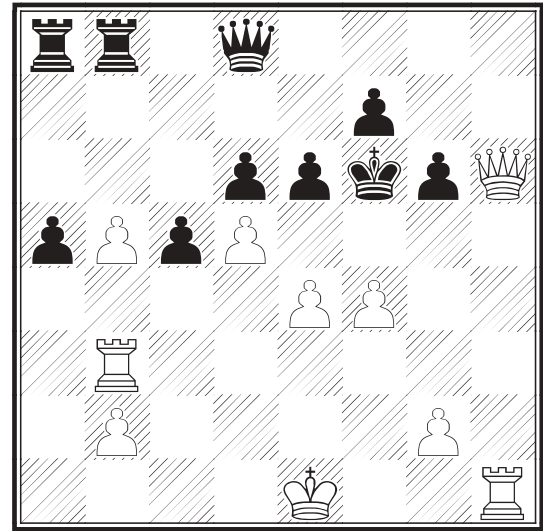
*Annotations by Joseph J. Mucerino, Jr.*

**1. d4 Nf6 2. c4 c5 3. d5 b5 4. cxb5 a6 5. b6 Qxb6 6.Nc3 d6 7. e4 g6 8. h3 Bg7 9. Nf3 O-O 10.Qc2 Nbd7 11. Nd2 a5 12. Nc4 Qa7 13. Na3 Ba6 14. Nab5 Qb6 15. a4 Rfb8 16. Bg5 Kf8 17. Qd2 Ne8 18. Bh6 Nc7 19. Bxg7+ Kxg7 20.Nxc7 Qxc7 21. Bxa6 Rxa6 22. Nb5 Qb6 23. Ra3 Nf6 24. f3 Ne8 25. Rb3 Qd8 26. h4 Nc7?**

After a pretty quiet game, where white has gained an edge with his knight on b5, I give white a ready made attack.

**27. h5 Nxb5 28. axb5 Raa8 29. hxg6 hxg6 30. Qh6+ Kf6**

When all of the heavy pieces are all on the board, and all of yours are on the back rank, but you king is on the third rank, you made a mistake somewhere!

**31. f4 e6****32. dxe6?**

Fritz liked 32. Qh4+ better. Here's a sample line: 32...Kg7 33. Qh7+ Kf8 34.e5 Ke7 35.Qg7 Qg8 36.Qf6 Kd7 37.dxe6 fxe6 38.exd6 Rb7 39.Rbh3 Rxb5 (if 39...Rbb8 40.Qe7+ and mate next) 40.Rh8 will leave white with a queen for rook advantage. 32.e5+ also wins. The line transposes into the note above.

**32... Kxe6 33. f5+ Kd7 34. fxe6 Qe7 35. Qf4**

Fritz preferred castling, in order to attack the pawn on f6, but the text move seems good too.

**35... Re8 36. Re3**

According to Fritz, a better try was probably 36. Rh7 Qxe4+ 37. Qxe4 Rxe4+ 38.Kd1 Rg4 39. gx7 Rf8. I had it analyze a bit further, and it gave 40.b6 Kc6 41.b7 Rd4+ 42.Ke2 Re4+ 43.Kd3 Rd4+ 44.Ke3 Rb4 45.Rxb4 axb4 46.g4 d5 47.g5, and black resigned because of the connected passed pawns.

**36... fxe6 37. e5 Rab8 38. e6+ Kc7 39. Qe4 Rxb5 40. Qxg6 Kc6 41. Rh7 Qd8 and here, white lost on time 0-1**

Fritz gave white about a 0.75 pawn advantage in this position. I had it play against itself in five "shootout" games, and white scored fifty percent, with one win for each side and three draws.

In round 3, Fleischer won with black against Vinko Rutar, and it appeared that he would run away with the tournament. Pariseau remained in the hunt a half point back by defeating Stepanian. Heisman finally won against Bowman. In the penultimate round, Fleischer defeated

Pariseau, I lost to Rutar, Conner beat Heisman, and Stepanian bested Shafritz. First place seemed certain to go to Fleischer, but he surprised most people by not attending in the final round. At the Main Line, only players who show up are paired, for Fleischer was not forfeited, but he did receive a zero point bye. Rutar, with three points, took full advantage of this by defeating Pariseau and entering into a tie for first. Fleischer, on tiebreaks, still received the first place silver bowl. Pariseau won the U2000 prize. Ten players took part at some stage of the event.

In the 25 player U1800 section, Will Moyer, who has been on fire recently, started off with a 4-0 score. He began by defeating club junior champion Praneeth Denduluri, then he survived a bad position against TD Craig Kline, and followed it up with wins over rising star Alexander Karlovitz and then Steve Rolfe in the penultimate round. But Mark Furey, who lost only half a point because of a half point bye, turned the tables in the final round. Klein won his final three game to tie with Moyer for second, but his worse tiebreaks gave the silver bowl to Moyer and left him emptyhanded. The U1500 bowl went to Robert Colanzi, U1300 to Karlovitz, and U1100 to Anthony Rosenfeld.

### 36th Annual National Chess Congress

PHILADELPHIA - This was the second event held at the Wyndham Hotel, and the attendance was generally the same as previous years: 565 players. All of the sections were played on the lower of the two floors that were used during the World Open. The difference between the two floors is that the playing hall on this floor had a large wall dividing the room in half, with a door at one end where the players can walk between rooms. This allowed the three-day and two-day schedules to be played in separate areas, and any noise made in one room could not really be heard by anyone in the other room. This appeared to be better than playing on the top floor, which is simply one large room.

Parking was not as bad as during the World Open and Live 8 concert. All of the cars appeared to be parked legally. If, when entering the parking garage, there is a sign saying that the top floor is full, you may want to ignore it. While driving down the ramp to the lower level, I took a quick peek at the top floor, and spaces were available. Also, on the weekend, you can park in the parking garage across the street for five dollars. WARNING: I heard that during the World Open, someone was mugged just outside the hotel. Please use caution. This is Center City Philadelphia.

If you read Jerry Hanken's report on the World Open in the October 2005 *Chess Life*, on page 14 he wrote that Wyndham Hotel already sold the space that the Continental Chess Association (CCA) wanted to purchase for the 2007 World Open. Where would the tournament go? Well, according to the CCA's website, <http://www.chesstour.com>, Valley Forge will host the event from June 30 - July 4, 2007. They do not mention a site, however. Except for that one event, the Wyndham appears to be the venue for the Liberty Bell Open, World Open, and the National Chess Congress for the rest of the decade.

This year's event, had some surprises, though. In the Premier Section, which was not an open section, but a section open to players rated 2000+ or players age 18 and under rated 1800+, the top two boards were held to draws in the first round. FM Daniel Shapiro drew top rated Ildar Ibragimov, and our own Alex Shabalov nearly lost with white to John Rouleau. WFM Alisa Melekhina also had a very nice win over FM Norman Rogers. Her rating point gains had slowed down over the last year or two, but I now think she will have a spike in her rating, and she should reach 2200 by the end of 2006. In round

2, GM Alexander Goldin and GM Nick de Firmian, now on the top two boards (the only boards separated from the rest), won their games. Gennady Zaitchik, Michael Rhode and John Fedorwicz were GMs who were held to draws. After losing my first round game, I avenged a prior defeat to Andrew Samuelson. In round 3, Shabalov's tournament got worse when he lost, with white, to FM Ilye Figler, apparently in time pressure. Goldin drew Joshua Friedell. The two schedules merged in round 4, and a Pennsylvanian was tied for the lead! FM Rodion Rubenchik defeated Gerald Bailleau, IM Alex Lenderman, and Alexander Barnett to have the best score after three rounds of the two day schedule. In this schedule, GM Jaan Ehlvest drew FM Emery Tate in round 2. Rubenchik's reward was to play black against Ibragimov on board two. Sadly, the grandmaster won. I had a pleasant surprise when IM William Paschall offered me a draw in the early middlegame. Who was I to say no? I took my second draw in a row.

The biggest surprise came on the final day. In round 5, FM Igor Schneider, ranked #22 on the wallchart, beat GM John Fedorwitz, and was in clear first place with 4½/5, with de Firmian being the only player to fall victim to him. Many of the grandmasters drew, but Shabalov won his second game in a row to narrow the gap on them after his poor start. The final round saw Ibragimov shatter Schneider's dreams of winning the tournament, although Schneider almost surely qualified for the U.S. Championship. Ibragimov finished with five points, tied with Goldin, who beat de Firmian in the last round, and Ehlvest, who defeated Lenderman. Shabalov won his last game, as did FM Bryan Smith, and they tied as best Pennsylvanians with 4½ points. Other Pennsylvanians: Zaitchik, Rubenchik, Rogers, IM Edward Formanek all finished with 3½; I drew my final four games to finish at fifty percent with Glenn Bady; NM Lorand Bela Kis, FM Zakhar Fayvinov, and Melekhina finished with 2½; and Bailleau and Shihong Khor had two.

In the other sections, Pennsylvanians did very well, often winning their section or finishing close to first. Here were the top players:

U2200: Palina Churun, Vladimir Polyakin and Jason McKinney 5/6  
Top PA: Narcisco Victoria 4½ He is now a master! Congratulations!

U2000: Ryan Goldberg 5½  
Top PA: Arut Baluyan 4½

U1800: Jonathan Munnell, Ted Udelson, Douglas Burgwin, Michael Williams and Nick Halgren 5  
Top PA: Burgwin and Williams

With 85 players, the U1600 section was the largest.

U1600: William Schreefer, a perfect 6-0 score!  
Top PA: Sherwin Duke 5

U1400: Samuel Francis 5½  
Top PA: Lassaad Sanane, Brian Bucher, Dennis Moore and Raymond Cravetz 4

U1200: Jahaade Adams, perfect 6-0!  
Top PA: Adams

U1000: Gregory Klupar 5½  
Top PA: Klupar

U800: Yuhao Xu and Yana Listovnichy 5  
Top PA: Xu and Listovnichy

U600: Benedict Ortiz, another perfect 6-0 score!  
Top PA: Jennifer Han 4

Unrated: Oluwaseyi Kayode and Douglas Beam 5  
Top PA: Beam

## Alex's Column

by FIDE-Master Alex Dunne

(Alex is a little busy at the moment, so we are rerunning one of his previous columns. In light of Joe Mucerino's recent bout of Francophilia, this column seemed particularly appropriate. - editor)

## Alex Dunne - Thomas N. Thrush

Bradford Open, 1986

Annotations by Alex Dunne

## 1. e4 e6

Pardonnez-moi, nous playons le Francais, oui?

## 2. Nc3 d5 3. Nf3 Nf6 4. e5 Nfd7 5. d4

Oui.

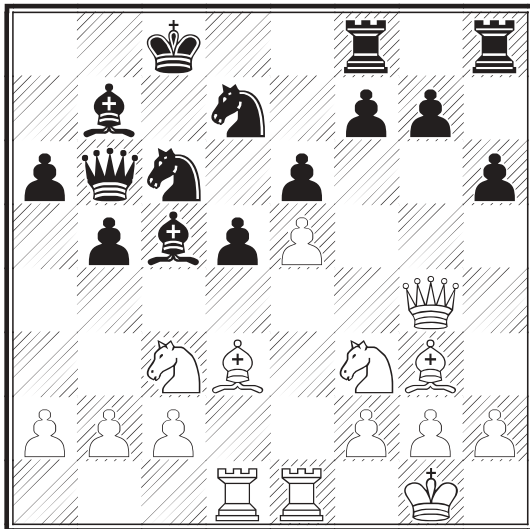
## 5...c5 6. dxc5 Bxc5 7. Bd3 Nc6 8. Bf4 a6

Dunne-Martinovsky, III NAICC continues 8...f6 9.exf6 Nxf6 10.0-0 0-0 11.Ne5 et Blanc est bon.

## 9. 0-0 b5 10. Re1 Qb6 11. Qd2 Bb7 12. Rad1 0-0-0

Le noir roi est dans son mansion. Blanc attaquez dans le droit.

## 13. Bg3 h6 14. Qf4 Rdf8 15. Qg4



## 15...Nb4?!

Le Pawn-sacrifice et le complications beginnez.

## 16. Qxg7?!

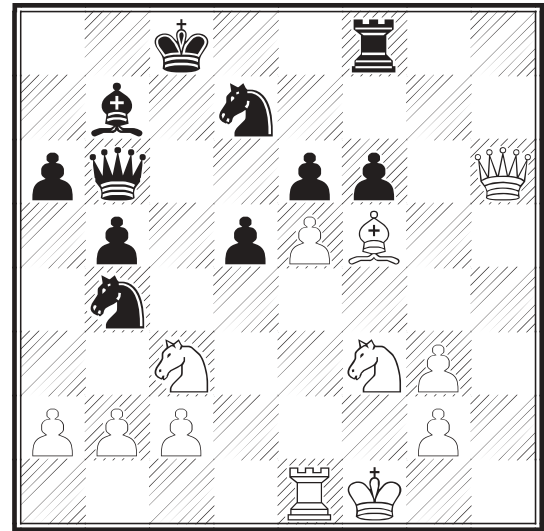
Demonstratez-vous!

## 16...Rhg8 17. Qxh6 Rxc3! 18. hxg3 Bxf2+ 19. Kf1 Bxe1 20.

## Rxe1 f6?!

Noir openez up le lines, mais le blanc avez un "surprise" - le square e6 est faible (le "weak").

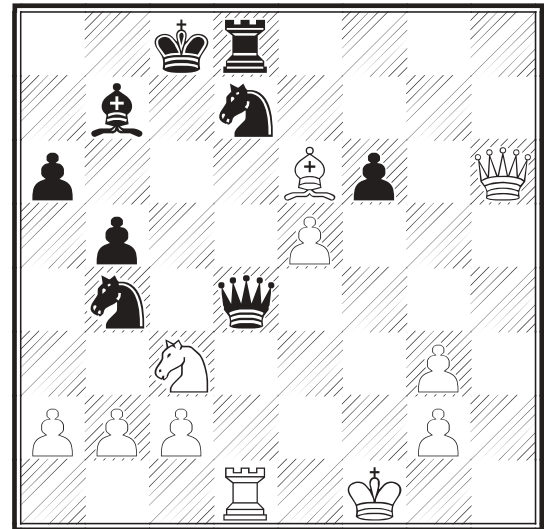
## 21. Bf5!



## 21...d4?!

Après 21...exf5 22.e6 Rd8 23.exd7+ Rxd7 24.Qf8+ et une figure est gagner.; Correctez est 21...fxe5 22.Bxe6 et Blanc est bon.

## 22. Nxd4! Qxd4 23. Bxe6 Rd8 24. Rd1



## 24...Qc5?

Après 24...Qxe5! 25.Bxd7+ Rxd7 26.Qf8+ Kc7 27.Rxd7+ Kxd7 28.Qxb4 Qxg3 29.Qd4+ le ending est une "toughie".

## 25. exf6!

Blanc avez quatre pions pour le figure et une meilleur jeu.

## 25...Nxc2 26. Rxd7 Rxd7 27. f7 1-0

Noir Resigner.

The Pennswoodpusher, November 1987

# 2006 Pennsylvania State Game/29 Championship

## April 8, 2006

### William Pitt Union, University of Pittsburgh, Pittsburgh



**Double Scotch on the Game/40 Rocks**

by Eric C. Johnson

I had the opportunity to play the Mieses line of the Scotch Game in two recent games against the same opponent. Both games were played at the Allentown Center City Chess Club at G/40.

**Eric C. Johnson (2100) - Christopher J. Rhodes (1980)**

Allentown Swiss, Round 3, 1/28/2006

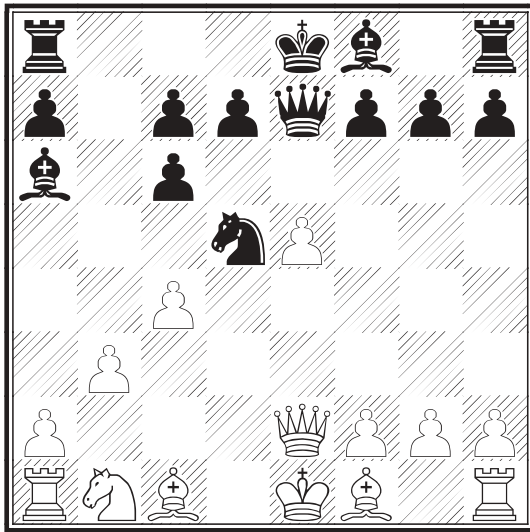
Annotations by Eric C. Johnson

**1. e4 e5 2. Nf3 Nc6 3. d4 exd4 4. Nxd4 Nf6 5. Nxc6 bxc6 6. e5 Qe7 7. Qe2**

These self-blocking moves are the best choices for both sides - if Black moves the knight right away, then he suffers from a cramp and a weakened pawn structure.

**7...Nd5 8. c4 Ba6 9. b3**

This is the line that Kasparov used to revive the Scotch in his 1990 match vs. Karpov. The new idea is that while White wants to protect his e5-pawn because of its cramping effect on Black's game, he isn't tied to it. The time that it takes Black to win the pawn can be put to productive use.



**9...g6 10. g3 Bg7 11. Bb2 O-O 12. Bg2 Rfe8**

Black should use the other rook for this maneuver. Especially if he wants to go in for the unbalanced ending that results from 12...Rae8 13.O-O Bxe5 14.Qxe5 Qxe5 15.Bxe5 Rxe5 16.cxd5 Bxf1 17.Kxf1 cxd5 18.Nc3 c6 John Emms thinks that there is plenty of life here for both sides, with a slight edge for White. Of course, neither of the players were fully versed in this at the time.

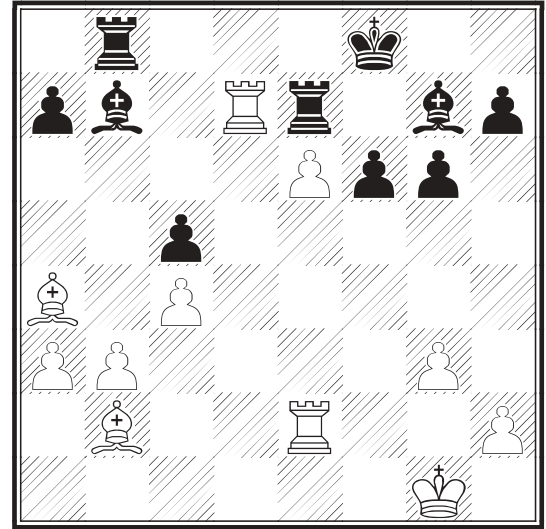
**13. O-O Rab8!? 14. Re1 d6 15. Nd2 Qd8 16. f4 dxe5 17. fxe5 Nb4 18. Ne4 Qd3 19. Nc5 Qxe2 20. Rxe2**

White has a clear advantage.

**20...Bc8 21. a3 Na6 22. Nxa6 Bxa6 23. Bxc6 Re7 24. Ba4 f6?! 25. e6!?**

The simple 25.Rae1 guarantees a big plus.

**25...c5 26.Rd1 Bb7 27.Rd7 Kf8?!**



**28. Red2?**

An example of how players miss killer shots in fast games. Here Fritz found 28.Be5!! and White engineers favorable trades. Every trade weakens the shaky black pawns. Instead the game fizzles out to equality.

**28...Rxe6 29. Rd8+ Rxd8 30. Rxd8+ Kf7 31. Kf2 Bh6**

The position is fully equal.

**32. Rd7+ Re7 33. Rxe7+ Kxe7 34. b4 Ba6 35. b5 Bb7 36. Bc2 f5 37. a4 Bd2 38. Ba3 Kd6 39. Ke2 Ba5 40. Bc1 Bc3 41. Bh6 Bd4 42. a5 a6!? 43. b6 Bc3 44. Bf8+**

Or 44.Bd2 to keep things alive.

**44...Ke5??**

And here is an example of how players who are under pressure for a full game often punt away points right when salvation is near. 44...Kd7 45.Bxc5 Bxa5 46.Be3 Bb4 47.c5 Kc6 48.Ba4+ is equal.

**45. Bg7+ 1:0**

Skewering the black king and bishop.

Well, that was a nice one. White certainly had an edge throughout that tough game (even if it did dwindle away near the end).

**2006 Pennsylvania State Amateur Championship**

**April 29 & 30, 2006**

**5-SS - Game / 90 Minutes**

**Comfort Inn, West Hazleton**

Two weeks later, I faced the same opponent in the same line:

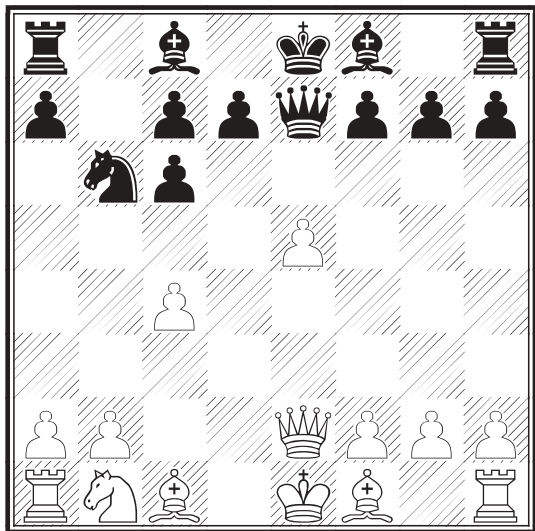
**Eric C. Johnson (2100) - Christopher J. Rhodes (1980)**

Allentown, Pennsylvania, 2/11/2006

Annotations by Eric C. Johnson

1. e4 e5 2. Nf3 Nc6 3. d4 exd4 4. Nxd4 Nf6 5. Nxc6 bxc6 6. e5 Qe7 7. Qe2 Nd5 8. c4 Nb6!?

The point of this move is to avoid putting the bishop on the inactive and somewhat vulnerable square a6. Instead, Black aims to open the a-file himself after a5, a4 and axb3. Thus my 10th move is a bit loosening.



9. b3 Qe6!? 10. a3?! a5! 11. Nd2 a4 12. b4 Ba6 13. Bb2 Be7 14. h4!?

With the immediate idea of stopping Bg5 and the long-term possibility of the h-rook developing to e3 via h3.

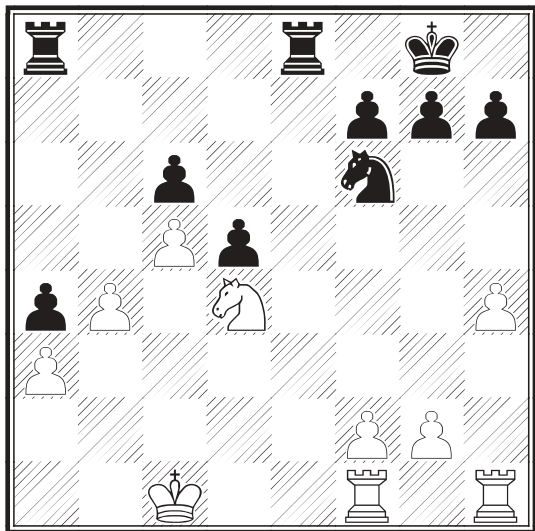
14...O-O 15. Qe4 d5 16. exd6 Qxe4+ 17. Nxe4 cxd6 18. Nd2

Here we are at moves 15-20 and the queens have been traded (again!), leaving White with the prospect of a small ending advantage due to his superior pawn structure.

18...Rfe8 19. O-O-O d5 20. c5

Do not be fooled by that passed d-pawn. The d4-square cries out for a blocking knight that will attack c6.

20...Bxf1 21. Rdx1 Nd7 22. Nf3 Bf6 23. Bxf6 Nxf6 24. Nd4 Mission accomplished.



24...Rac8 25. Re1 Kf8 26. f3

Stopping any intrusions on e4.

26...g6 27. Rxe8+ Kxe8 28. Kd2 Kd7 29. g4 h5 30. g5 Ne8

With the black knight being driven backwards, it is clear that White has the edge.

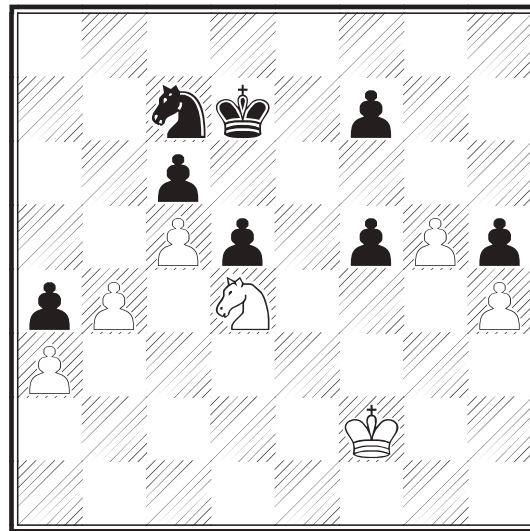
31.f4 Nc7

Here possibly 31...Ng7 with the idea of blockading with Nf5. In a rook ending the fractured pawns would be of much less significance.

32. f5 Re8 33. Re1?

An error similar to that in the first game. White has a plus and plays a sub-par move that drifts back toward equality. Instead the simple 33.fxg6 fxg6 34.Rf1! keeps things going.

33...Rxe1 34. Kxe1 gxf5 35. Kf2



35...Ne6?!

Missing a chance to force a draw with 35...Nb5!, hitting the a3-pawn and not fearing 36.Nxb5 cxb5 because the two isolated d and f pawns keep the white king at bay. As long as they remain on the same rank, only advancing if the white king directly attacks their partner (which will in turn rush to catch up as soon as it is safe), they will remain invulnerable. White should keep his king on the e-file and only approach a pawn which has mistakenly advanced beyond its partner. Black in turn must keep his king within the square of White's protected passed c-pawn, so the ending is drawn.

36. Nxf5

Problem solved.

36...Nc7 37. Nd4 Ne6 38. Ne2 Nf8 39. Nc3 Ng6 40. Kg3 Ne5

41. Nxa4 Nc4? 42. Nb6+! Kc7 43. Nxc4 dxc4 44. Kf4 1:0

And White is inside the square of the c-pawn.

## Games From PSCF Members

We open this issues game selection with a couple of choice specimens from a player we don't hear much from these days, Joe Mucerino. Joe takes the stage here....

(Scene, Pittsburgh Chess Club. Martinak, Mucerino, Magar, and other strong players are analyzing the Scholar's Mate. Joe slips Tom a ten-spot under the table.)

Tom: Hey, Joe, out of the 1,000 games that you won, which is your favorite?

Joe: Thanks for asking. This one was very memorable. For some reason, the editor did not publish it when I originally sent it to him. (Perhaps he was trying to keep from renaming the PWP the Mucerino Chess News? - editor)

**Joseph J. Mucerino, Jr. (1997) - Joseph V. Weber (2221)**  
 North Penn CC Summer Double Quad, Round 4, 6/19/2003  
 Annotations by Joseph J. Mucerino, Jr.

This is the situation: I lost to Weber in an earlier round (this is a double round robin). If he beat me again, then he would run away with the tournament, so I had to do something dramatic.

**1. d4 Nf6 2. Nc3 d5 3. e4 Nxe4**

This is the Huebsch Gambit variation of the Blackmar-Diemer Gambit. Although somewhat unusual, it is quite playable.

**4. Nxe4 dxe4 5. Bc4 Qd6**

Threatening 6...Qb4+, winning the bishop. This is something of a sideline, 5...e6 is more usual.

**6. c3 Qg6 7. Ne2**

In a previous encounter, I tried the ugly 7.g3 and got squashed. To prepare for this game, I studied this line in Rev. Tim Sawyer's definitive work on this opening, *The Blackmar-Diemer Gambit Keybook II*. The work paid dividends.

**7...Qxg2**

Weber thought for 15 minutes on this move, and the whole time he had his eyes on this pawn.

**8. Rg1 Qf3**

If 8... Qxh2 9. Bf4 etc.

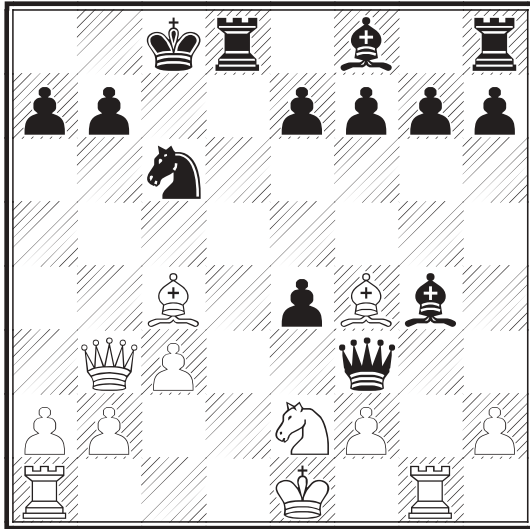
**9. Bf4 c6 10. d5**

So far, Weber and I have followed Pendergast - LoPresto, corr. 1989, which white won. LoPresto played 10...Nd7. Weber played...

**10... Bg4?**

Now white gains the initiative. Fritz liked 10...a6, keeping the bishop on c8 where it protects the pawn on b7.

**11. dxc6 Nxc6 12. Qb3 O-O-O**



**13. Rxc6! Qxc6**

Fritz gave this a "??", but says that its alternate line of 13... e5 14. Rg3 Qh1+ 15. Rg1 Qf3 is also strong for white.

**14. Bxf7 Rd6**

There really is no satisfactory way to defend against Be6+.

**15. Bxd6 Qf3 16. Be6+ Kd8 17. Qxb7 exd6 18. Qd7 mate 1-0**

Joe promised me if I ran this game he would stop sneaking French into his articles.

**Brian Sheinfeld (1882) - Joseph J. Mucerino, Jr. (2048)**  
 Harrisburg West Shore CC Autumn Swiss, Round 4, 10/31/2005  
 Annotations by Joseph J. Mucerino, Jr.

**1. e4 d5 2. exd5 Nf6 3. d4 Bg4 4. Be2 Bxe2 5. Qxe2 Qxd5 6. Nf3 e6 7. Bf4 Nc6 8. Nc3**

If 8.Bxc7 Nxd4 9. Nxd4 Qxd4 leads to an equal position.

**8... Qa5 9. O-O O-O-O 10. Nb5 Rd7 11. Ne5 Nxe5 12. Bxe5**

Fritz notes that if 12. Qxe5 Rd5 13.Qxc7+ Qxc7 14. Nxc7 Rxd4 is better for black.

**12... a6 13. Nc3 Bd6 14. Bxf6?!**

I don't like this move. White invites black to attack down the g-file. I turned into a vampire after this move.

**14... gxf6 15. Ne4 Be7**

I wanted to keep the bishop for a possible later attack on h2.

**16. c3**

Fritz says the position is equal, but I think black has an advantage, because his rooks are more active.

**16...Rg8 17. Qf3 Rg6 18. Ng3 Rd5 19. Ne4 Rf5 20. Qe2 Qd5**

**21. f3 Qd8 22. b4 Qg8 23. a4**

If white plays 23.b5 immediately, black can try to close things down with 23...a5.

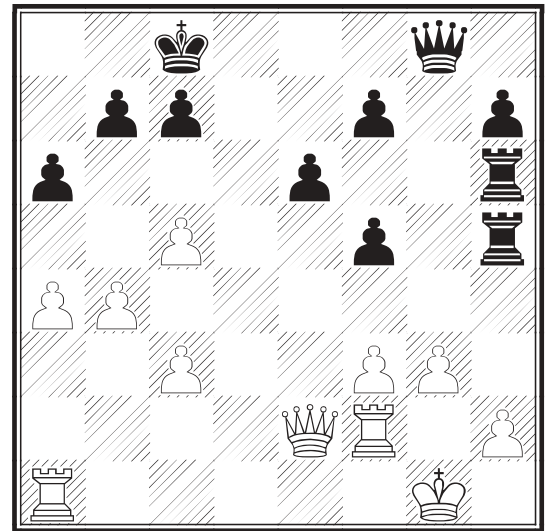
**23... Rh5 24. Rf2 f5 25. Nc5**

25. Ng3 is also possible, although white has to watch out for sacs on g3 or h2.

**25... Rgh6 26. g3 Bxc5**

I captured this knight so my king can use the d7 square as a flight square if one of white's rooks checks on the back rank.

**27. dxc5**



**27...Qxc3+! 28. Rg2?!**

Sheinfeld was in terrible time pressure. Of course, he did not fall for 28. hxc3?? Rh1+ 29.Kg2 R6h2 mate. White should simply give up the pawn with 28.Kh1.

**28... Rxc3 29. Qxe6+??**

Again, time pressure. White has to enter into the ending with 29. Rxc3 Rxe2 30. Rg8+ Kd7 (this is why I captured the knight earlier) 31. Rd1+ Kc6.

**29...fxe6 30.Rxc3 Rh1+ 31.Kf2 Rxa1 32.b5 Rg6 33.Rh3 h6 0-1**

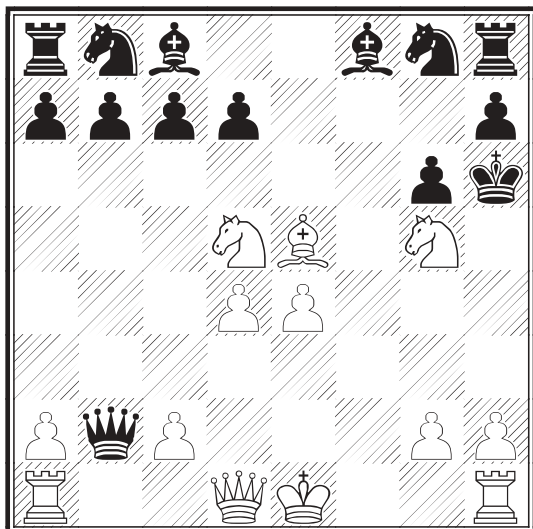
And now we get a double feature of Knightmare on Bickel Street.

### Henry R. Bickel - Anonymous

1.e4 e5 2.f4 exf4 3.Nf3 g6 4.Bc4 Qf6 5.d4 Qe7 6.Nc3 Qb4  
7.Bxf7+ Kxf7 8.Ng5+ Kf6 9.Bxf4 Qxb2

Neglecting development, Black wastes even more time capturing the classic queen's knight pawn sacrifice!

10.Nd5+ Kg7 11.Be5+ Kh6



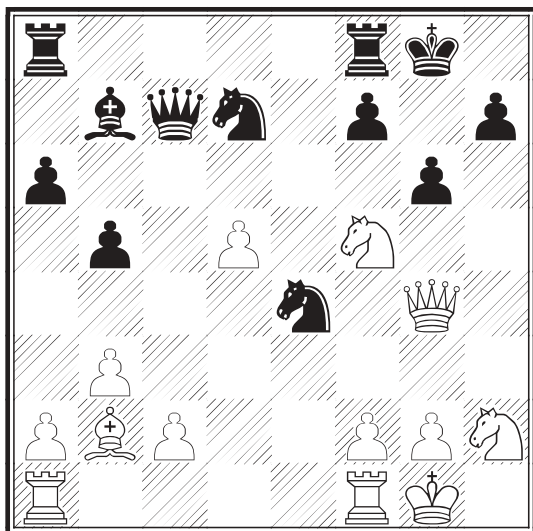
12.Nf7# 1-0

A classic example of lack of development. Only two pieces have moved from their original stations - and one is the king.

### Henry R. Bickel - Sean M. Parli

SuperNationals III, Round 6, Nashville, Tennessee, 4/10/2005

1.e4 c5 2.Nf3 d6 3.d4 cxd4 4.Nxd4 Nf6 5.Bd3 a6 6.Nc3 Nbd7  
7.O-O e6 8.Bd2 Be7 9.Nf3 b5 10.Ne2 Bb7 11.Ng3 e5 12.Bc3  
O-O 13.b3 Qc7 14.Bb2 d5 15.exd5 Bd6 16.Nf5 e4 17.Bxe4  
Bxh2+ 18.Nxh2 Nxe4? (The knight must maintain control of g4.)  
19.Qg4 g6



20.Ne7# 1-0

Dan Heisman sent us this interesting example of David almost beating Goliath:

### Daniel E. Heisman (2285) - Paul D. Petrillo (1237)

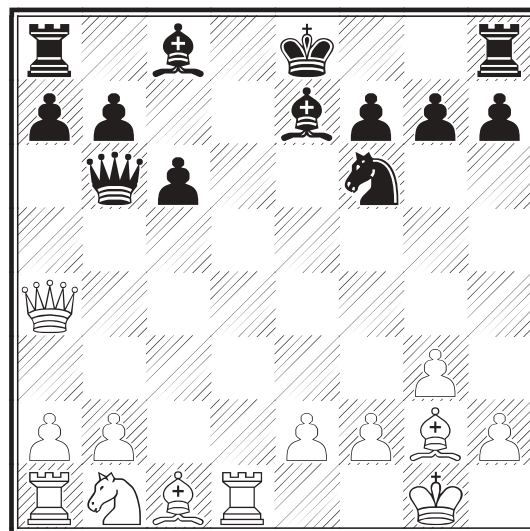
Main Line CC Practice, 11/10/2005

Annotations by Daniel E. Heisman

1. c4 e5 2. g3 Nf6 3. Bg2 d5 4. cxd5 Nxd5 5. Nf3 Nc6 6. 0-0 Be7

More common is 6...Nb6

7. d4 exd4 8. Nxd4 Nxd4 9. Qxd4 Nf6 10. Qa4+ c6 11. Rd1 Qb6



12. Na3?!

Here Kosten's book *The Dynamic English* recommends 12.Nc3, but I did not like this and neither does Fritz! Of course, I did not remember it, either.

1) 12.Nd2 Ng4 13.Qf4 Be6 14.Ne4 0-0 15.h3 Nf6 16.b3 Nxe4 17.Qxe4 Rad8 18.Bb2 =

2) 12.Be3 Bc5 (12...Qxb2 13.Bxc6+ Kf8 14.Bf3 Qxa1?? 15.Bd4±) 13.Bxc5 Qxc5 14.b4 Qb6 15.Nc3 0-0 16.b5 Bd7 17.Qd4 Qxd4 18.Rxd4 cxb5 0.22

3) 12.Nc3 and 3.1) 12...0-0 (3.2: 12...Ng4 13.Qf4 0-0 14.h3 Nf6 15.Qe3 Bc5 16.Qf3 Rd8 17.Bg5 Bd4 18.Ne4 0.09/12 ; 3.3: 12...Bd7 13.Qc2 0-0 14.Ne4 Nd5 15.Ng5 f5 16.Qc4 Kh8 17.Bxd5 cxd5 0.19/12 ) 13.Qf4 Re8 14.Rb1 Qc5 15.Be3 Qh5 16.Bd4 Be6 -0.13/12 - Black is slightly better

12...0-0 13. Nc4 Qc5! 14. Qa3

Fritz: 1) 14.Be3 Qh5 15.Qa5 Qxa5 (15...Qxe2 16.Nb6 Bd8) 16.Nxa5 Re8 17.Bd4 h6 18.e4 Bd8 19.e5 Bxa5 20.exf6 g6 0.09/12; 2) 14.Ne3 Be6 (Fritz 8: 2.1: 14...Be6 15.Bd2 Qh5 16.Bf3 Qg6 17.Bc3 a6 18.Qc2 Qxc2 19.Nxc2 Rad8 20.e4 Rxd1+ 21.Rxd1 Bxa2 -0.28/12 ; 2.2: 14...Re8 15.Bd2 Be6 16.Bc3 Qh5 17.Bf3 Qg6 18.Rd3 Nd7 19.Qe4 Bc5 -0.25/12 ; 2.3: 14...Qh5 15.Bf3 Qg6 16.Qa5 Re8 17.h4 Ne4 18.Qe5 f5 19.h5 Qf7 -0.19/12 ) 15.Bd2 Rfe8 16.Bc3 Qh5 17.Bf3 Qg6 18.Rac1 -0.28/11; 3) 14.Nd2 -0.41/11

14...Qxc4

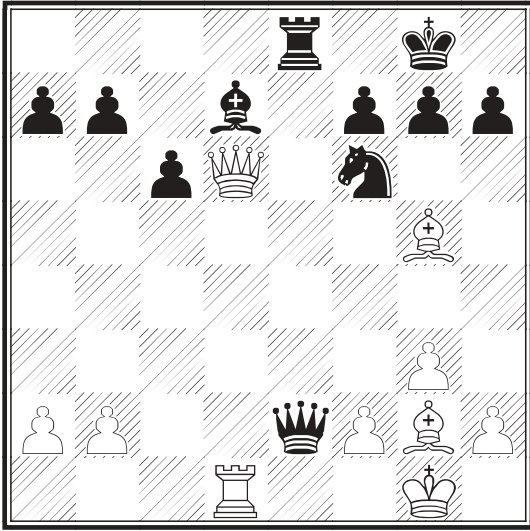
Better is 14...Qxa3 15.Nxa3 Bg4 16.Nc2 Rad8 17.Bf4 Bc5 18.Kf1 Rfe8 19.Rxd8 Rxd8 20.b4 Bb6 21.b5 cxb5 -0.31/15

15. Qxe7 Re8 16. Rd8 Bd7 17. Rxa8 Rxa8 18. Bg5!

The only move, and it took me a while to find it!

18...Re8 19. Qd6 Qe6 20. Rd1 Qxe2?

Better is 20...Nd5 +/-

**21. Bxf6?**

Missing the win with 21.Bf1!, e.g. 21... Qxf2+ 22.Kxf2 Ne4+ 23.Kg1 Nxd6 24.Rxd6

**21...Bg4! 22. Rf1**

This is equal, but to try to win by 22.f3 Qe3+ 23.Kh1 Bxf3 24.Bc3 Bxg2+ leads to a forced draw by perpetual, so I had to avoid that.

**22...Re6?**

The losing move; 22...gxf6 23.Qxf6=

**23. Qb8+ Re8 24. Bd8!? h6 25. Qd6 Re6 26. Qd4 Qe1? 1-0**

Black resigns due to 27.Qxg4

**Scholastic Corner**

by PSCF SE Scholastic Coordinator Dan Heisman

Scholastic corner is aimed for players K to 12, their parents, and scholastic sponsors/coaches. In this issue I would like to address the status of chess scholarships in the Philadelphia area, specifically the recent chess scholarship fund that was created at the Philadelphia Foundation. Our goal is to make chess a more respected - and rewarding - activity for talented youngsters by making scholarship money available for colleges. The best way to do this is to establish tax-deductible scholarship funds - but

**...We need your help!**

In the Philadelphia area, Dr. John F. Bayley of Gladwyne, PA, a retired pediatrician, has been leading the way to establish chess as a worthy scholarship activity. His goal is to reward hard-working scholastic chess players in the same way as football or basketball players. He wants to make chess a more "academic-worthy" activity and increase the respect within the academic community. Towards this goal he revived the Greater Philadelphia Junior Invitational Chess Championship, where the top eight scholastic players are invited to compete for prizes. A further goal was to make those prizes substantial enough to help college education and to be attractive enough that all top players would wish to play. A few years ago we started with a \$1,000 total prize fund but for 2006 Dr. Bayley's goal is a \$1,000 *first place* prize (and a total \$2,000 prize fund).

In conjunction with this goal, Dr. Bayley and I approached many organizations with the hope of getting some real corporate sponsorship for the Junior Invitational and the Greater Philadelphia (Open) Scho-

lastic Chess Championship. One stumbling block is that these events are not charitable. Thanks to the PSCF and the Philadelphia Foundation (<http://www.philafound.org/>) this obstacle was to be overcome. However, with the exceptions of small donations from Main Line Speech Ltd. and M&T Bank (both greatly appreciated!), we have still not been able to locate a willing corporate or organizational sponsor. If anyone knows one who might be interested...

In early 2005 I decided to make a charitable chess contribution. It wasn't as easy as I thought it would be! I first approached USCF, but they were not very cooperative (two e-mails to the corporate headquarters were not answered and a third e-mail to the scholarship group did not address the questions that I raised about possible donations). Then I tried to make a donation for a perpetual chess scholarship through Penn State University. They were even more difficult than the USCF, completely misunderstanding and changing my suggested scholarship idea to make it unfair and unrecognizable. Worse, when I asked to speak to the person responsible for the misunderstanding, I was not allowed to do so. Apparently Penn State preferred not to take my money (but they still call asking for small donations...!) It seemed that no one wanted my offered donations for scholastic chess scholarships! So finally I turned to the Philadelphia Foundation, which had long hosted another charitable fund with which I was associated, the Holly Heisman Memorial Fund, a fund supporting women in need. Each August I had been hosting a charity chess event to raise money for this fine cause. With the encouragement of Dr. Bayley, I would soon have a second fund at the Philadelphia Foundation!

On May 31, 2005 I made a substantial donation to establish a new tax-deductible fund at the Philadelphia Foundation called the Dan Heisman Chess Scholarship Fund (I was the only donor to establish the fund!) The fund provides this scholarship money to worthy chess players who do well in local scholastic events like the Greater Philadelphia Junior Invitational Championship and the Greater Philadelphia Scholastic Chess Championship.

Anyone can (and hopefully will) make a tax-free donation. A donor may specify if the money is to go for endowments (future years) or non-endowments (may be disbursed this year), or any percentage of each. If the type of funds are not specified, they automatically will go to the non-endowment portion of the Fund so the Fund's Scholarship Advisory Committee can either disburse such funds in the current calendar year or decide to endow it.

Donors will receive a tax confirmation letter from The Philadelphia Foundation. Legally, all Fund disbursements may only be sent directly to a student's college - none to individuals. The scholarship money may only be sent upon proof of matriculation.

To donate on-line: If you want to make a tax-deductible donation on-line to this fund, go to <http://www.philafound.org/page22267.cfm> and follow the instructions there. (The name of the fund is the Dan Heisman Chess Scholarship Fund).

If a donor wishes to send a check, make checks payable to "The Philadelphia Foundation" with "Dan Heisman Chess Scholarship" in the memo field and mail to:

The Philadelphia Foundation  
1234 Market Street Suite 1800  
Philadelphia PA 19107

With your help - even a small amount when you can make it - the fund will grow and each year more and more scholarship money will be

available in perpetuity! For 2006 the fund has made its first disbursement of about \$422 - not nearly enough to dent a college semester - but it can only grow over the years as interested parents - and other parties - participate. I have designated \$322 to go to the 2006 Greater Philadelphia Junior Invitational Championship and \$100 to the 2006 Greater Philadelphia High School Champion.

Hope you can take a moment to make our children's chess futures more rewarding.

## Crossing the Bar

### Victor Rislow III (1941-2005)

On December 20, Victor Rislow, a member of the Harrisburg West Shore Chess Club, lost his battle with lung cancer. He was sixty-four; one year for every square on the chessboard.

He was an Associate Professor of Music at Susquehanna University in Selinsgrove for 35 years, where he founded a chess club.

He had been playing rated chess since 1995, and was playing in his eighteenth tournament, the Harrisburg West Shore CC Winter Hex, when he passed away. His highest rating was 1376, and he defeated the now almost 2400 rated FM Igor Schneider at the 1998 U.S. Amateur Team East, when Schneider was provisionally rated 738. Rislow played on and off for the last few years with the PA Pawn Rookers at the U.S. Amateur Team East.

Mr. Rislow is survived by one daughter, son-in-law and grandson, Margaret, Douglas and Frank Pugliese of New York City; one sister, Neli Rislow of Tallahassee, FL; and by his companion, Patricia Bettger of Mechanicsburg.

- Joe Mucerino

## Letters to the Editor

Neil,

On page 9 of the *PSCF Annual* it states "Main Line Chess Club (Peter Fleischer, William Peterson, Peter Minear, Mike Glick) is the top Pennsylvania Team at the (USATE)..." But Peter Fleischer did not play. Main Line's first board was FM Matt Bengtson. I am not even sure that the team above would have qualified as U2200 at the time.

Regards,  
Dan Heisman

(Point taken. Keep those cards and letters - and corrections - coming! - editor)

Dear Editor,

I am writing in reference to a terrific article, "Chess Behind Bars", by Bruce Leverett, in the February 2005 *Pennswoodpusher*. I appreciated the fine compliments Bruce offered regarding our chess activities at Western Pen.

Also, I would mention we enjoyed the support of Steve Frymer, co-chair of the USCF's Prison Chess Committee. Steve selected me to

Ad Rates for *The Pennswoodpusher*: Back Cover: \$150; 1 page: \$120; ½ page: \$80; ¼ page: \$50. Ads scheduled for 4 consecutive issues receive a 25% discount on the above prices. Contact Randi Malcuit, PO Box 453, Epping NH 03042-0453, 603-679-8164, statelinechess@yahoo.com

serve as a member of the PCC. Through our lobbying efforts we were successful in getting USCF's Executive Board to agree on a reduced membership fee for prisoners. I think this has been in effect now for almost ten years.

Simultaneous exhibitions such as the one given by GM Yermolinsky would be a hit in just about any prison in the country. I spoke a few years ago with Dave Roberts, Director of the Bureau of Inmate Services for the Pennsylvania Department of Corrections, about prison chess programs and he seemed receptive to the idea of simultaneous displays. He promised to look into it. I plan to follow this up.

At Western, I was involved in all sorts of activities with the Pittsburgh Chess Club members, not just chess, problem-solving, and what have you. For instance, several Club members, including Frank Cunliffe and Ed Barr, were also attracted to mathematical problems and I had a number of discussions with them on the subject. On more than one occasion, Frank, Ed, and I would take time to work out a math problem or puzzle on one of the classroom blackboards.

Additionally, we enjoyed regular visits by an area checker master, Bill Moore. He entertained almost everyone with his six and seven move deep checker combinations. He played chess too, but he was much stronger in checkers.

Grandmaster Larry Evans has published a number of columns in *Chess Life* over the years in support of prison chess programs. Once he published a letter from me on the subject.

Finally, on the value of more chess players being involved with chess problem solving, I offer this quotation from an interview with Susan Polgar gave to *The Wall Street Journal*. The interviewer wrote, "Ms. Polgar's first coach was her father, Laszlo... he emphasized 'visualization, pattern recognition, and speed. We learned to play blindfold and blitz chess at an early age and solved thousands of chess puzzles in our childhood.'" The article is "Envoy from the Sport of Kings and Queens, Bishops, Knights....", in the March 5, 2005 issue.

Cordially yours,  
Kenneth B. Davenport

(This letter was originally received several months ago and misfiled. We apologize to Mr. Davenport and our readers. - editor)

## UPCOMING PSCF EVENTS

**April 8 GPP:6 Pennsylvania (QC) 2006 PA State Game/29 Championship.** 5-SS. G/29. Lower Lounge, Main Floor, William Pitt Union, Univ. of Pittsburgh, 5th Ave. & Bigelow Blvd., Pittsburgh PA 15213. 2 sections: **Championship:** Open to all. EF: \$25 postmarked by 3/31, \$35 after. \$\$ (690G): 200-100, U2000 \$90, U1800 \$80, U1600 \$70, U1400 \$60, U1200 \$50, U1000 \$40. Trophies to Top 3 under 1400, Top 3 under 1200, and Top 3 under 1000. **Scholastic:** Open to K-12 who are unrated or rated under 900. EF: \$15 postmarked by 3/31, \$25 after. Trophies to Top 7, and Top 3 under 600. **All:** PSCF required \$5 OSA. Trophies to 1st-2nd club and school teams combining 4-7 players from both sections. Reg ends 10:30am. Rds 11am - 12:30pm - 1:45pm - 3pm - 4:15pm. **Info:** martinak\_tom\_m@hotmail.com, 412-908-0286. **Ent:** Tom Martinak, 549 13th Ave., New Brighton PA 15066-1208. Checks payable to PSCF. W. *Sponsored & Organized by the PA State Chess Federation & University of Pittsburgh Chess Club.*

**April 29 & 30. 2006 PA State Amateur Championship.** 5-SS. G/90. Comfort Inn, 58 SR 93, West Hazleton PA 18202, ½ mile from Exit 145 off I81. Open to U2200. EF: \$20 postmarked by 4/21, \$30

after. Trophies to 1st-3rd, 1st-2nd U1800, 1st-2nd U1600, 1st-2nd U1400, 1st-2nd U1200. 1st & 2nd receive paid advance entry into 2006 PA State Championship, Title to Top PA Resident. Trophy to Top School Team, any number of players may play, top 4 scores count for team. Reg 8:45-9:15am. Rds 10am - 1:30pm - 5pm, 10am - 1:30pm. PSCF \$5 OSA. **HR:** Comfort Inn 570-455-9300, 1-877-424-6423 \$94 by 3/31. **Info:** jem023@ptd.net, 570-455-9261. **Ent:** GHACC, C/O Michael Jemo, 567 Forest Hills Dr., Hazleton PA 18201-9648. Checks payable to GHACC. W. *Sponsored & Organized by the PA State Chess Federation & Greater Hazleton Area Chess Club.*

**June 24 & 25. 3rd Western Pennsylvania Junior Open.** 5-SS. Lower Lounge, Main Floor, William Pitt Union, Univ. of Pittsburgh, 5th Ave. & Bigelow Blvd., Pittsburgh PA 15213. Open to ages 20 & under. 5 sections: **2-day (Sat & Sun):** G/75. **EF:** \$18 postmarked by 6/16, \$28 later. Reg ends 11:30am. Rds Sat Noon - 3pm - 6pm, Sun Noon - 3pm. **Championship**, open to all. **1-day (Sun only):** G/40. **EF:** \$15 postmarked by 6/18, \$25 later. Reg ends 11:30am. Rds Noon - 1:30pm - 3pm - 5pm - 6:30pm. **Premier**, open to U1200. **Reserve**, open to U900. **Booster**, open to U700. **Amateur**, open to U500. **All:** Trophies to top 7 in each section, additional medallions; Teams of 4 to 7 players combined from all sections, Trophies to top 3 schools & top 3 clubs, PSCF required \$5 OSA. **Info:** martinak\_tom\_m@hotmail.com, 412-908-0286. **Ent:** PSCF, c/o Tom Martinak, 549 13th Avenue, New Brighton PA 15066-1208. Checks payable to PSCF. W. *Sponsored & Organized by the PA State Chess Federation & University of Pittsburgh Chess Club.*

#### A Heritage Event

**July 22 & 23** **GPP:10** **Pennsylvania**  
**2006 Pennsylvania State Championship.** 5-SS. G/120. Lower Lounge, Main Floor, William Pitt Union, Univ. of Pittsburgh, 5th Ave. & Bigelow Blvd., Pittsburgh PA 15213. \$\$ (2510 b/90, 2/3 guaranteed) 4 sections. **Open**, open to all: \$\$ 500-250, U2200 \$140. **Premier**, open to those rated under 2000: 300-100, U1850 140. **Reserve**, open to those rated under 1700: 300-100, U1550 140. **Booster**, open to those rated under 1400: \$\$ 300-100, U1200 140. Unrated limited to \$125 in U2000, \$100 in U1700 and \$75 in U1400. **All:** Trophies to Top PA & Top PA Junior in each section. **EF:** \$40 postmarked by 7/14, \$50 later. Re-entry: \$20. PSCF required \$5, OSA. Reg ends 9:30am. Rds Sat 10am - 2:15pm - 6:30pm, Sun 11:30am - 3:45pm. **Info:** martinak\_tom\_m@hotmail.com, 412-908-0286. **Ent:** PSCF, c/o Tom Martinak, 549 13th Avenue, New Brighton PA 15066-1208. Checks payable to PSCF. W. *Sponsored & Organized by the PA State Chess Federation & University of Pittsburgh Chess Club.*

**July 23. 2006 PA State Championship Scholastic.** 5-SS. G/40. Dining Rooms A & B, 1st Floor, William Pitt Union, Univ. of Pittsburgh, 5th Ave. & Bigelow Blvd., Pittsburgh PA 15213. Open to those entering grades K to 12. 3 sections: **Premier**, open to U1100 & unrated in grades 9 to 12. **Reserve**, open to U900 & unrated in grades 6 to 8. **Booster**, open to U700 & unrated in grades K to 5. **All:** Trophies to top 7 in each section, additional medallions; Teams of 4 to 7 players combined from all scholastic and adult sections, Trophies to top 3 schools & top 3 clubs. **EF:** \$15 postmarked by 7/16, \$25 later. PSCF required \$5 OSA. Reg ends 11:30am. Rds Noon - 1:30pm - 3pm - 5pm - 6:30pm. **Info:** martinak\_tom\_m@hotmail.com, 412-908-0286. **Ent:** PSCF, c/o Tom Martinak, 549 13th Avenue, New Brighton PA 15066-1208. Checks payable to PSCF. W. *Sponsored & Organized by the PA State Chess Federation & University of Pittsburgh Chess Club.*

Watch for the latest information on PSCF tournaments on our website:

<http://www.pscfchess.org/clearinghouse/>

## PSCF GOVERNANCE

**PSCF Website address:** <http://www.pscfchess.org/>

### PSCF Officers

**President:** Tom M. Martinak; 549 13<sup>th</sup> Avenue, New Brighton PA 15066-1208; 412-908-0286; martinak\_tom\_m@hotmail.com  
**Vice-President - East:** Dr. Ira Lee Riddle; 400 Newtown Road, Warminster PA 18974-5208; 215-674-9049; Iralee@aol.com  
**Vice-President - Central:** Gregory L. Vaserstein; gv07@yahoo.com  
**Vice-President - West:** Boyd M. Reed; 853 Larimer Avenue, Turtle Creek PA 15145-1050; 412-823-1788; blitzburgh64@aol.com  
**Secretary:** Joseph J. Mucerino, Jr.; 108 Russell Avenue, Douglassville PA 19518-1119, 610-385-3751; patzerpounder@hotmail.com  
**Treasurer:** Stanley N. Booz, CPA; 252 West Swamp Road Suite 39, Doylestown 18901; 215-345-6651; stanbooz@comcast.net  
**Scholastic:** Steve J. McLaughlin, Sr; 2745 Pershing Avenue, Abing-ton PA 19001-2202; 215-784-5938; zugzwangl@erols.com  
**Western PA Scholastic:** Robert C. Ferguson, Jr.; 140 School Street, Bradford PA 16701; 814-368-4974; amchess@amchess.org  
**SouthEastern PA Scholastic:** Daniel E. Heisman; 1359 Garden Road, Wynnewood 19096-3626; 610-649-0750; danheisman@comcast.net  
**Philadelphia Scholastic:** Stephen D. Shutt; 871 N Woodstock St, Philadelphia 19130; 215-978-6867; StephenShutt@yahoo.com  
**PSCF Historian & Editor:** Neil R. Brennen; 102 Bethel Road, Spring City PA 19475-3300; chessnews@mindspring.com

### PSCF Life Members

John H. Allen, Howard Bogus, Stanley N. Booz, Greg Borek, John Caliguire, Will Campion, Natal Carabello, Steve Coladonato, Donald H. Conner, Mike Cox, Frank Cunliffe, Leroy Dubeck, Bob Dudley, Alex Dunne, Roy C. Eikerenkoetter, Robert Ferguson, Ryan Ferguson, Peter Fleischer, John Gibbons, Dan Heisman, Phillip Holmes, Joe Johnson, James Joline, Keith Kuhn, Tom M. Martinak, Allan Messinger, Andrew Metrick, Derek J. Modzelewski, Glenn R. Mohler, Randy Moyer, Joseph Mucerino, William Nast, Ross Nickel, Ira Lee Riddle, Stanley Robertson, Michael Shahade, Michael M. Short, Jason A. Smith, Mark E. Stickel, Richard Stoy, Mike Styler

### USCF Delegates

Tom M. Martinak, Alex Dunne, Ira Lee Riddle, Bobby G. Dudley, Daniel E. Heisman

### USCF Alternate Delegates

Stanley N. Booz, Eric C. Johnson, Gregory L. Vaserstein, Boyd M. Reed, Eric R. Mark

### Thank you for recent donations to the PSCF by:

H. George Bauer, Rene Bonilla, Melanie M. Brennan, Randall N. Sears & Bryan G. Williams

*The Pennswoodpusher* is the official quarterly publication of the Pennsylvania State Chess Federation. Advertising rates available on request. Material in this publication may be reprinted by other magazines as long as credit is given to both the author and to *The Pennswoodpusher*.

Dues are \$5 for students/adults/clubs, \$100 for Life memberships. The PSCF is a 501(c)(3) non-profit organization, and donations are deductible to the extent allowed by law.

Advertising Manager: Rates for ads in *The Pennswoodpusher* are available upon request from Randi Malcuit, PO Box 453, Epping NH 03042-0453, 603-679-8164, statelinechess@yahoo.com

Address Corrections & PSCF Memberships should be sent to: Tom Martinak; 549 13<sup>th</sup> Ave; New Brighton PA 15066-1208; 412-908-0286; martinak\_tom\_m@hotmail.com

**WHERE TO PLAY CHESS IN PENNSYLVANIA**

ANY CORRECTIONS/ADDITIONS/DELETIONS GRATEFULLY ACCEPTED

**ALLENTOWN**

Center City CC; St Luke's Lutheran Church, 417 N 7th St; Sat Noon-6 pm

**ALTOONA**

Andrew Stergiou 814-941-2310

**BLOOMSBURG**

Kehr Union Bldg; Bob Ross 570-784-8571

**BRIDGEWATER**

The Copper Dog, 234 Bridge St; Tues 7-9 pm, Jim Scibilia 724-728-8044

**BRADFORD**

(1) Univ of Pitt-Bradford Commons Building; Tues 8-11 pm

(2) School Street Elementary; Wed 6:30-8:30 pm

**CHAMBERSBURG**

Chessman; 600 Miller St; Thurs 7-10 pm, 717-261-9132, 717-263-2836

**CHESTER**

J Lewis Crozer Library, 620 Engle St; Tues 5:30-7:30 pm, 610-364-1212

**CLEARFIELD**

Shaw Library; Tues and Thurs 6-9 pm; Sat 9-noon, Ron 814-765-7788

**COATESVILLE**

Cultural Soc, 258 E Lincoln Hwy; Thurs 5-10 pm, Bob Jones 610-384-1790

**COUDERSPORT**

High School, 698 Dwight St; Patrick Keeney 814-274-4428

**DOUGLASSVILLE:**

Amity CC, St Paul's UCC, 1312 Old Swede Rd; Fri 7-10 pm, 610-385-6324

**ERIE**Zurn Science Building, W 7th St between Peach and Sassafras, Room 341;  
Fri 6:30-10 pm, James Walczak 814-870-7763**GLADWYNE**Main Line CC; Waverly Hts Ret Comm Game Room, 1400 Waverly Rd;  
Tues 7 pm, Dan Heisman 610-649-0750**GREENSBURG**

Courthouse Square; Wed 6-11 pm, 724-836-5625

**HARRISBURG**

Calvary United Methodist Church, 700 Market St (Rear), Lemoyne; Mon 7-10 pm, Brian Sheinfeld 717-761-3151

**HATBORO**

Chaturanga CC; Trinity Orthodox Presbyterian Church, County Line Rd W of Blair Mill Rd; Thurs 8 pm, 215-794-8368

**HAZLETON**

Greater Hazleton CC; Zola's Lamp Post, Rt 940; Thurs 8-11 pm, Bob Brubaker 570-384-4122; Also Checkers Pizza, Rt 309 &amp; 28th St; Tues 8-11 pm

**HUNTINGDON VALLEY**

Huntingdon Valley Chess Society Juniors; Huntingdon Valley Library, 625 Red Lion Rd; Tues 7:30-8:30 pm

**JOHNSTOWN**

East Hills Rec Comm, 445 Schoolhouse Road; Mon 6 pm, 814-255-8614

**LANCASTER**

Rodney Park, Crystal &amp; Rodney St; Wed 6:30-9 pm, 717-892-6612

**LANSDALE**

(1) North Penn CC; St John's UCC Church, Main and Richardson Sts; Thurs and Fri 7 pm - 1 am, 215-699-8418

(2) Lansdale Public Library CC; 301 Vine St; last Sat of the month 10am

**MANSFIELD**Wellsboro-Mansfield CC; Independence Bible Church, 33 East Ave;  
Irregularly 1st/3rd Mon 7-10 pm, Don Thompson 570-376-2452**MONROEVILLE**

Wed 6:30-8:30 pm, Delbert Tyler 412-824-5015

**MURRYSVILLE**

1st Presbyterian Ch, 3202 N Hills Rd; Wed 7-11 pm, Jay Griffin 724-325-2484

**NEW CASTLE**

Lawrence County CC; Trinity Episcopal Ch, N Mill &amp; Falls; Thurs 6:30-9 pm

**PHILADELPHIA**

(1) FMCC; 2012 Walnut, Lower Level; Mon - Thurs Noon-9 pm, Fri &amp; Sat Noon-Midnight, 215-496-0811

(2) Univ of Penn CC; Chats Cafeteria, 3800 Locust; Wed 8 pm

(3) Masterminds CC; Fountains @ Logan Square East, 2 Franklin Town Blvd; Wed &amp; Fri 7-10 pm, Steve Slocum 215-455-6285

(4) Jardel Recreation Center, 1400 Cottman Ave, Thurs 6:30-9:30 pm, Sat Noon-4 pm

(5) Inglis House, 2600 Belmont Ave, 1st &amp; 3rd Mon 6 pm

(6) Temple Univ; SAC Dining Area, Mon/Wed 6-7 pm, Tues/Thurs 12-3 pm, 267-973-0765

**PITTSBURGH**

(1) Univ of Pitt CC; William Pitt Union; Tues &amp; Thurs 7-11 pm, 412-908-0286

(2) Pittsburgh CC; Wightman School Community Center, 5604 Solway St; Wed 1-9 pm, Sat Noon-10 pm, 412-421-1881

(3) Crafton Public Library, 140 Bradford; Sat 9 - Noon, 412-922-4234

(4) Hill Branch Library, 419 Dinwiddie St; Mon &amp; Thurs 3-7 pm, Sat 1-5 pm, 412-361-6170

(5) CMU CC; University Center Commons; Thurs 6-8 pm

(6) Mt Lebanon Lib, 16 Castle Shannon; Scholastics: 1st/3rd Mon Sept-May, Adults/Older Scholastics: Thurs 7-8:30 pm; 412-531-1912

**PETERS TOWNSHIP**

CRC, Peterswood Park, 700 Meredith Dr; Wed 6-7 pm, Eric 412-221-2394

**POTTSTOWN**

YMCA, 724 N Adams St; Fri 6:30-8:30 pm, Michael Mullin 610-323-7300

**READING**

Million Youth Chess Club; Olivets Boys &amp; Girls Clubs; 677 Clinton, Mon 5-7; 1161 Pershing, Fri 6:30-8:30; Mike 610-373-3061

**RIDLEY PARK**

Tri-State Chess Club; Ridley Park United Methodist Church, 15 East Dupont Street; Mon 6:15 - 11 pm, 610-586-8205

**SCRANTON**

Redman's, Main &amp; Elm; Sun 2 pm, Patrick Walker 570-347-5200

**SHAMOKIN**

Burger King, Rte 61; Mon 7:30 pm

**SHIPPENSBURG**

Health Care Center, 121 Walnut Bottom Rd; Wed 6-9:30 pm, 717-477-0645

**STATE COLLEGE**

(1) PSU CC; ASI Bldg, Room 16; Thurs 7 pm

(2) Schlow Library, 118 S Fraser Street; Sun 2-5 pm, 814-571-9629

**STROUDSBURG**

YMCA, Main St; Thurs 7-11 pm, Eric 570-476-8939 or Jim 717-992-5475; &amp; Loder Senior Center, 62 Analomink St, East Stroudsburg; Tues 7-11 pm

**VANDERGRIFT**

St Paul's Lutheran Church, 714 Wallace Street, Mon 6-9pm, 724-567-6580

**WARMINSTER**

WREC, 1101 Little Ln; Tues 6:30-8, 215-443-5428

**WARREN**

Warren Library, 205 Market St; 1st &amp; 3rd Sat 9am - 1pm

**WASHINGTON**

1st Lutheran Ch, 92 West Walnut St; Thurs 8:30-11:30pm, 724-743-4350

**WEST CHESTER**

(1) West Chester CC; United Methodist Ch, High &amp; Barnard Sts; Thurs 7 pm

(2) WC Univ CC; Sykes Student Building, Room 112; Thurs 11 am - 2 pm

**WILKES-BARRE**

199 S Main St; Fri 8:30-Midnight, George Trent 570-740-7662

**WYNCOTE**Montgomery Youth CC; Calvary Presbyterian Church, 217 Fernbrook Ave;  
Wed 7-8:30 pm, Steve McLaughlin 215-784-5938**YORK**

(1) Trinity United Meth Ch, 241 E King St Rear; Wed 6-9 pm, 717-845-9368

(2) Youth CC; Grace Brethren Ch, Newberry &amp; Parkway; Wed, 2-5:30 pm; &amp; Light of Life Arts, 41 Cherry, Seven Valleys; Fri 6-9:30 pm, 717-852-8434