

# The PENNSWOODPUSHER

February 2003 A Quarterly Publication of the Pennsylvania State Chess Federation

## YOUTH WILL BE SERVED...

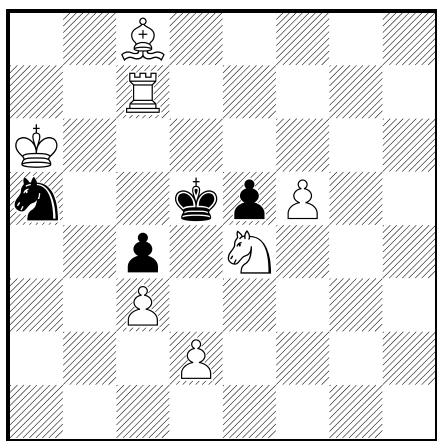
### Then....

#### Jacob Elson's Early Years

by John S. Hilbert

Jacob Elson was one of the finest chessplayers Philadelphia produced during the Nineteenth Century. Born April 8, 1839, in Würzburg, Bavaria, Elson came to this country as a young man. As Walter Penn Shipley tells us in his February 21, 1909, *Philadelphia Inquirer* chess column, written shortly after Elson's death "of a stroke of apoplexy" on January 28, 1909, Elson first settled in Memphis, Tennessee, but shortly thereafter moved to Philadelphia, where he spent the rest of his life. As recorded in the *American Chess Bulletin* for April 1909, in his day Elson won games over the likes of Bird, Delmar, Halpern, Hanham, Mackenzie, Mason Reichhelm, Shipley and Weiss. Yet he rarely appeared outside his adopted city, preferring instead to steadily work in his jewelry shop on 151 North Sixth Street as a watchmaker, and waiting for strong opponents to stop by the old Philadelphia Chess Club, and before that, the Athenaeum, at Sixth and Adelphi Streets, where according to Reichhelm, in *Chess in Philadelphia*, "a room and four chess tables were accorded the royal pastime."

By the early 1860s, Elson was considered one of the strongest players in Philadelphia. He was also known as an accomplished problemist, as the following example from the late 1860s suggests



**White to Move and Mate in Three**  
*Philadelphia Evening Bulletin*, June 4, 1869  
(solution at end of article)

Elson was a master of the offhand game, and he frequently plied his art in later years. Here, for example, he takes on James Mason, then a young resident of New York City. The annotations are Reichhelm's.

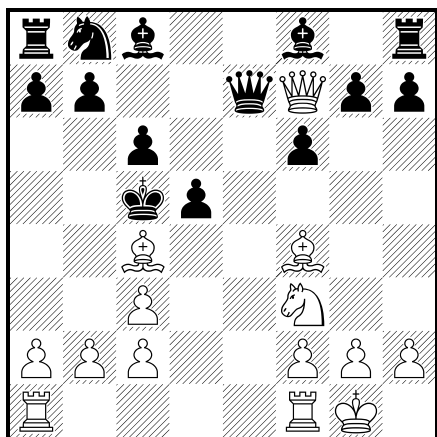
### ...and Now

#### *A Heritage Event*

**March 8 & 9, 2003 Pennsylvania State Scholastic Championships.** 122 Trophies!! (90 Individual, 32 Team). Kehr College Union, Bloomsburg University, Bloomsburg PA 17815-1307 (off I-80). 8 sections (Sat & Sun 3/8 & 9 unless indicated): EF: **K-3 Open:** (Sat 3/8 only) \$28. **K-6 U800:** (Sat 3/8 only) \$26. **K-9 U1000:** (Sun 3/9 only) \$26.25. **K-6 Open:** \$27.50. **K-8 Open:** \$28.50. **K-12 U1000:** \$25.50. **K-12 U1300:** \$26.50. **K-12 Open:** \$29.50. **All:** 5SS. EFs if rec'd by 2/15, \$10 more rec'd 2/16-3/1, \$20 more after 3/1. PSCF memb. incl. \$\$ for Castle Camp (scholarships) & (if possible) 1st team, player in K-6, K-8 & K-12 Opens for Nationals, Denker. Reg Fri 3/7 7-9 pm at site, late entries Sat 3/8 9:30-10:15 am at site get 1st Rd 1/2 pt. bye. Send name, USCF ID & exp, section, grade, school/club, birthday, gender, address, phone, email + EF. Each change at site \$5. Rds (Sat 3/8 1-day sections): G/40 T/D5; 10-11:45-2-3:45-5:30; (Sun 3/9 K-9 U1000): G/40, T/D5; 9-10:30-12:30-2-3:30; (2-day sections): G/90, T/D5; 10-2-5:30, 9-1. HR: Mention "PA States" before 2/1 for best rate; Days Inn (Exit 224 off I-80) 570-275-5510 50-50-50-50-50; Econolodge (Exit 232 off I-80) 570-387-0490 54-54-54-54. **Ent:** PSCF, c/o Tom Martinak, 320 N. Neville St. Apt 22, Pittsburgh PA 15213-1656. **Info:** <http://www.pscfchess.org/pascholasticchamp/>, Dan: danheisman@comcast.net 610-649-0750; Rich: Rich\_barbara@hotmail.com 412-767-9228. Checks payable to PSCF. W.

Jacob Elson – James Mason  
Philadelphia 1875

1.e4 e5 2.Nf3 Nf6 3.Bc4 Nxe4 4.Nc3 A most interesting, though somewhat risky variation. 4...Nxc3 5.dxc3 f6 6.0–0 c6 Recommended by Kieseritzky, but not the best move. 7.Nxe5 d5 8.Qh5+ Ke7 9.Qf7+ Kd6 10.Nf3 Qe7 11.Bf4+ Kc5



12.Be3+ Kxc4 If 12...Kd6, then 13.Qh5. 13.a4! and wins, as Black must sacrifice his Queen to avoid Nd2 mate. 1–0



Philadelphia Intelligencer, March 30, 1875

Jacob Elson, image from The Hilbert Collection

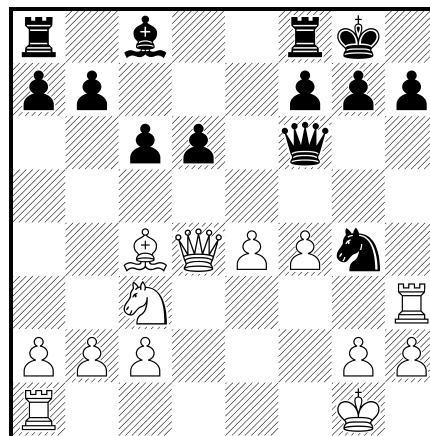
Elson would later finish tied for fourth and fifth with Davidson at the Fourth American Chess Congress, held during the Centennial Celebrations in Philadelphia during 1876, behind Mason, Judd, and Bird. Elson would go on to hold his own in individual games with Steinitz, and to render good service to the cause of chess in his city for nearly fifty years.

Yet nothing, to date, has been known about Elson’s early chess days in Philadelphia, during the middle to late 1850s. Heretofore he simply appears on the city chess stage following Morphy’s visit to Philadelphia in November 1859.

Something of Elson’s days learning the game, however, has now come to light, and in rather unexpected fashion. While at the Cleveland Public Library researching other matters, I happened upon a scrapbook with the unassuming title “Chess Notes, Edward Courtenay [1867-1879], Cleveland Public Library (microfilm) OCLC# 40865302.” As it turned out, the volume was clearly misdated, as letters of an even earlier vintage were found. While perusing the pages of that work, I discovered three undated letters written to Miron James Hazeltine, long-time chess column editor for the *New York Clipper* from August 16, 1856, through 1905, and editor of several other chess columns around the country. The letters were written by Dr. Louis C. Newman, who was an average club player of the period and who was active in the Philadelphia area. Newman wrote Hazeltine that “Enclosed I send you a game played between me and my chess pupil Jacob Elson. If you think it worthy give it a place in your chess columns. Jacob Elson promises to become one of our most brilliant players but as yet he loses to me the majority of games. The first time he will win a game in his brilliant style from me I shall send it.” Newman asked that only his initials be used to identify him if Hazeltine published the game. Here we see the young Elson, in what is no doubt his earliest recovered game to date, the victim of a smothered mate.

Jacob Elson – Dr. Louis C. Newman [C44]  
Offhand Game, Philadelphia 185-

1.e4 e5 2.Nf3 Nc6 3.d4 exd4 4.Bc4 d6 5.Nxd4 Nxd4 6.Qxd4 Nf6 7.Bg5 Be7 8.Nc3 c6 9.f4 0–0 10.0–0 Ng4 11.Bxe7 Qxe7 12.Rf3 Qh4 To prevent his doubling rooks. 13.Rh3 Qf6



14.e5 Exchanging Queens strikes us as much better. 14...dxe5 15.fxe5 Qxe5 16.Qe4 Giving the defense a “forced won game.” 16...Qc5+ 17.Kh1 Immaterial what he does. The best move costs a rook. Mate in four moves. 0–1

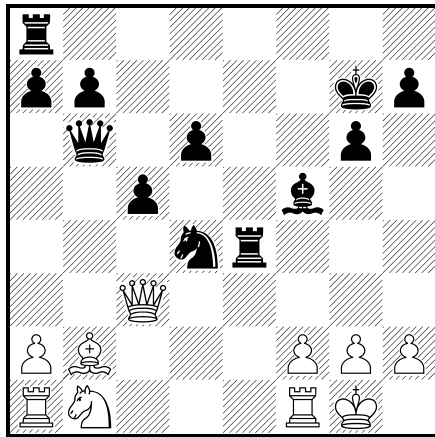
Chess Notes, Edward Courtenay [1867–1879], p.188

Newman kept his promise to Hazeltine, writing the columnist sometime later that “On the other side please find a game between J.E and myself. We recently played six games where I yielded him the odds of pawn and move of which he scored 3 and myself the remainder, and then 13 where I gave him the move of which he scored 5 and I 8. Some of those he won were competently played on his part.

The enclosed is a specimen of it. You will thus see that I have not overrated the strength of my pupil, and if he would but practice he will soon make a capital player." Here is Elson's win over his teacher, once again with Newman's comments.

**Jacob Elson – Dr. Louis C. Newman [C21]  
Offhand Game, Philadelphia 185-**

1.e4 e5 2.d4 exd4 3.Bc4 Bb4+ 4.c3 dxc3 5.bxc3 Bc5 In subsequent games the defense played 5...Qf6 followed by ...Ba5. 6.Nf3 Nc6 6...d6 would perhaps have been better. 7.Bxf7+ Kxf7 8.Qd5+ Ke8 9.Qxc5 d6 10.Qc4 Nf6 11.0-0 Qe7 12.e5



12...Be6 For the purpose to see whether the attack would know how to profit by blunders. 12...Nxe5 gives the defense the preferable game. 13.Qb5 Well played. The defense cannot avoid the loss of something. 13...dxe5 14.Qxb7 Kd7 The young player need hardly hesitate, since the move was compulsory. 15.Rd1+ Bd5 16.c4 Rab8 17.Qa6 Rb6 18.Qa4 Rb4 All useless. The piece is not to be saved. 19.Qc2 Nd4 20.Nxd4 Rxc4 21.Qxc4 Cleverly played. 21...Bxc4 22.Nf5+ 1-0

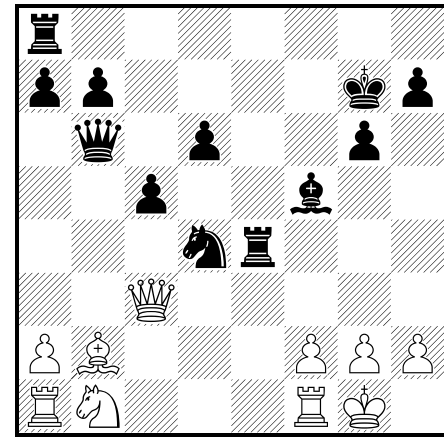
*Chess Notes, Edward Courtenay [1867-1879], pp.191-192*

Whatever Hazeltine made of Newman's letters, or Elson's progress, is unknown, though perhaps someone with the opportunity to examine Hazeltine's early *Clipper* columns might find mention of the young pupil. Whatever the case, Elson made good improvement. The third and final letter in the Scrapbook from Newman to Hazeltine notes that "When I had the pleasure of seeing you the last time at the Morphy Chess Rooms, I promised to send you some specimens of Jacob Elson's play. I now send you a game he played with Mr. Thompson of your city. Mr. T. opened on him the Evans Attack. They played only two games. Mr. T. lost them both." "Mr. Thompson" was undoubtedly James Thompson of New York City, of whom Reichhelm in *Chess in Philadelphia* wrote "born 1805 in London, died 1870 in New York, [Elson] was the most brilliant player of New York in his day, and noted for his Evans Gambits." Reichhelm was slightly in error, however, as Thompson was in fact born on September 23, 1804, rather than in 1805. Thompson was known to visit Philadelphia on several occasions, and it is likely the following game was played during one of those trips.

**James Thompson – Jacob Elson  
Offhand Game, Philadelphia 185-**

1.e4 e5 2.Nf3 Nc6 3.Bc4 Bc5 4.b4 Bxb4 5.c3 Bc5 6.d4 exd4 7.Ng5 Nh6 8.Nxf7 Nxf7 9.Bxf7+ Kxf7 10.Qh5+ g6 To enable him to bring his rook into action. 11.Qd5+ Kg7 12.Qxc5 d6 13.Qb5 Re8 14.0-0 Rxe4 15.cxd4 Nxd4 16.Bb2 c5 17.Qd3 Bf5 18.Qb3 Qb6 Leaving

two pawns to challenge an exchange of Queens. 19.Qc3



19...Qc6 Threatening to play ...Rg4. 20.Nd2 Driving the rook where he wants to go. 20...Rg4 21.Nf3 Kf8 Threatening to win offhand. 22.Kh1 Be4 Winning another pawn. 23.h3 Bxf3 24.hxg4 Bxg2+ 25.Kg1 Losing more speedily. If 25.Kh2 the Defense would then capture the rook with bishop, then compel an exchange of Queens, having three pawns ahead. 25...Ne2+ 0-1

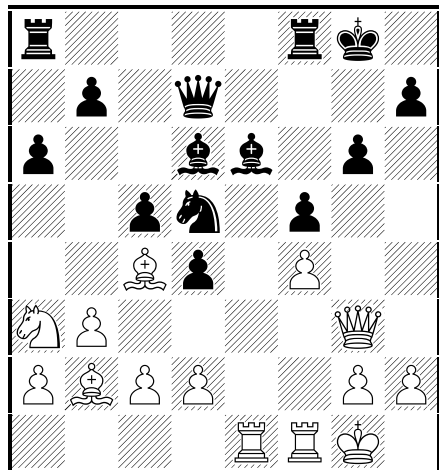
*Chess Notes, Edward Courtenay [1867-1879], pp.193-195*

Trash talk, unfortunately, is hardly a new development among chessplayers. As a postscript, Newman added that "a report is current that Mr. [Samuel] Loyd called Elson and Reichhelm "rook players." You may depend that they will sooner or later give him such a thrashing which will make him rue for such a statement. Mr. [Theodore] Lichtenhein could barely give either of them a pawn and move." Lichtenhein was a strong player, and by 1856 champion of the old New York Chess Club. The following year Lichtenhein would finish third at New York 1857, behind only two players: Paul Morphy and Louis Paulsen. No doubt Loyd, excellent player though he was, would have had real trouble offering either Elson or Reichhelm odds for very long. In 1862, Reichhelm defeated Elson in a match by the relatively close score of 7-4, with 2 draws. Three years later, in 1865, Reichhelm defeated George Mackenzie, the strongest player in the country, 4-1, with 1 draw, in offhand games. (Although he would be decisively beaten in years to come by Mackenzie in two formal matches.) And Elson was the next strongest player in Philadelphia. It is unlikely Loyd or anyone else was calling them "rook players" at that point.

Indeed, not all that many years thereafter, Elson was playing on even terms with the best players in the land. Here is an example of his offhand play against Mackenzie. Note too that as early as 1867, Reichhelm could comment that Elson was out of practice! Out of practice or not, Elson continued playing for another forty or more years. Published at the start of October 1867, the game that follows was said by Reichhelm to have been played "last week."

**Jacob Elson - Mackenzie [A01]  
New York September 1867**

1.b3 Want of practice and forgetfulness of bookish lore compels Mr. Elson to adopt unusual openings, so as to throw each player, as much as possible, on his own resources. 1...e5 2.Bb2 Nc6 3.e3 d5 4.Ne2 f5 5.Ng3 Bd6 6.Be2 Nf6 7.0-0 0-0 8.f4 exf4 9.exf4 Ne7 10.Nh5 Nxb5 11.Bxb5 c5 12.Qf3 g6 13.Qg3 d4 14.Na3 Be6 15.Rae1 Qd7 16.Be2 a6 17.Bc4 Nd5



18.Rxe6 Winning two pieces for the rook. 18...Qxe6 19.Qf3 Kg7 20.Qxd5 Qe7 21.c3 Rad8 22.cxd4 cxd4 23.Qxd4+ Kh6 24.Qc3 g5 25.fxg5+ Kg6 26.Nc2 b5 27.Bd3 Qa7+ 28.Ne3 Bc5 29.Kh1 Kxg5 30.Qe5 and wins. 1-0

*Philadelphia Evening Bulletin, October 4, 1867*

But the game above is given only as an illustration of Elson's play years after his reputation had been made in Philadelphia. The three games appearing earlier in this article, on the other hand, clearly stand as three of the earliest ever recovered, as played by this forgotten master from Philadelphia.

**Solution to Chess Problem: 1.d3 cxd3 1...Nb3 2.Be6# (2.Bb7#) 2.Rc4 Nxc4 2...Kxc4 3.Be6# 3.Bb7# Philadelphia Evening Bulletin, June 4, 1869**

© 2003 John S. Hilbert All Rights Reserved

## Shabalov in Seattle: Alexander Shabalov wins US Championship

By winning his last round game when all around him other players were making quick draws, GM Alexander Shabalov of Pittsburgh won the 2003 United States Chess Championship on January 18, 2003. This year's US Championship was a nine round swiss, and continued the pattern set last year by running the US Championship and US Woman's Championship as a single tournament. The highest scoring woman wins the US Woman's Championship title. Fifty-eight players competed in the event, with some having been seeded and some winning their place in qualification events. The US Chess Championship is held annually in Seattle by America's Foundation For Chess (formerly the Seattle Chess Foundation), a non-profit organization that was formed to save the Championship after the USCF canceled the tournament in 2000.

The following biography of the US Champion is taken from the website of the US Championship organizer, America's Foundation For Chess.: "Born in Riga, Latvia on September 12, 1967 Grandmaster Alexander Shabalov discovered the game of chess by watching his father play with his friends. He soon proved to be a promising talent by winning the highly competitive Under 16 Championship of the Soviet Union in 1982.

"In 1988 he chose the career of being a professional player and became a grandmaster in 1991. Among his chess teachers were the late Mikhail Tal and Vladimir Bagirov. Because of political turmoil, Alex decided to move to America in 1992 and ended up in Pittsburgh where his wife

obtained a medical residency.

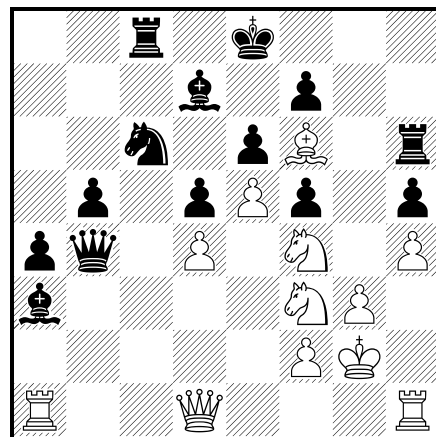
"In 1993 Alex won both the prestigious U.S. Open and the U.S. Championship sharing the latter title with Yermolinsky. In 2000 Alex won the U.S. Championship again together with Seirawan and Benjamin. Alex debuted for the U.S. team during the 1994 Moscow Olympiad and later played second board at the Elista Olympiad. Alexander is regarded as an 'Open warrior' on the tournament circuit, and is often seen playing in events both in the U.S. and Europe. His other interests include tennis and music."

Below is the game that gave Shabalov the title. From a worse opening he engineers a remarkable comeback . Once again Kimball Nedved's famous phrase "Pittsburgh chess is tough!" is proven true.

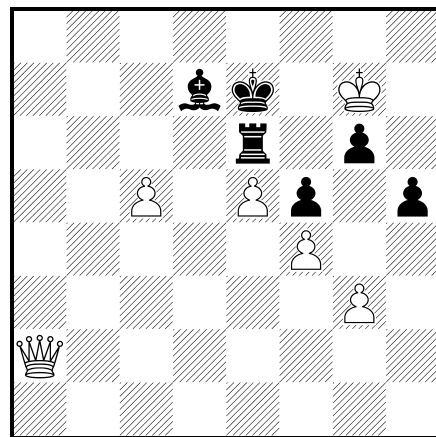
### Alexander Shabalov(2613) - V. Akobian (2531) [C02]

United States Championship 2003 USA (9), 18.01.2003

1.e4 e6 2.d4 d5 3.e5 c5 4.c3 Nc6 5.Nf3 Qb6 6.a3 Nh6 7.b4 cxd4 8.cxd4 Nf5 9.Bb2 Be7 10.h4 h5 11.Bd3 g6 12.Bxf5 gxf5 13.Nc3 Rg8 14.g3 Bd7 15.Bc1 Rc8 16.Ne2 a5 17.b5 Qxb5 18.Bg5 a4 19.Rb1 Qa5+ 20.Kf1 Bxa3 21.Ra1 Qb4 22.Nf4 Rh8 23.Kg2 b5 24.Bf6 Rh6



25.Re1 Qf8 26.Qe2 Be7 27.Bg5 Rh8 28.Rec1 Rb8 29.Rab1 Bxg5 30.hxg5 Qa3 31.g6 fxe6 32.Nxe6 Bxe6 33.Rxc6 Qe7 34.Rxb5 Kf7 35.Ng5+ Qxg5 36.Rc7+ Qe7 37.Rxe7+ Kxe7 38.Rc5 Rxc8 39.Qa6 Rxc5 40.Qa7+ Ke8 41.dxc5 Rc8 42.Qxa4+ Bd7 43.Qd4 Be6 44.f4 Ke7 45.Qb4 Rc6 46.Kh3 Bd7 47.Kh4 Kf7 48.Kg5 Ke7 49.Qb3 Re6 50.Qxd5 Bc6 51.Qa2 Bd7 52.Kh6 Be8 53.Kg7 Bd7



54.Qh2 Rc6 55.Qh4+ Ke8 56.Qf6 Rxf6 57.exf6 Be6 58.c6 g5  
59.fxg5 f4 60.g6 ffg3 61.f7+ 1-0

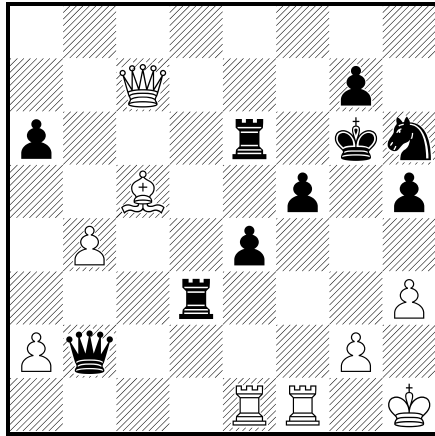
30.Kd2 gxf4 31.gxf4 e5 32.Rf1 Kg7 33.Kc2 exf4 34.Nxf4 Bb8  
35.Bc4 Bxf4 36.Rxf4 Ne5 37.Bd5 b6 38.axb6 Rd6 39.b7 Rb6  
40.Rf5 f6 41.Rxe5 fxe5 42.Kb3 1-0

**More Games from the US Championship...**

**Greg Shahade (2452) - Olga Sagalchik (2116) [B49]**

United States Championship 2003 USA (4), 14.01.2003

1.e4 c5 2.Nf3 e6 3.d4 cxd4 4.Nxd4 a6 5.Nc3 Qc7 6.Be2 Nf6  
7.0-0 Nc6 8.Be3 b5 9.f4 b4 10.Na4 Nxe4 11.Bf3 d5 12.f5 exf5  
13.Nxf5 Be6 14.Bxe4 dxe4 15.Nc5 Qe5 16.Nxe6 Qxe6 17.c3 f6  
18.cxb4 Kf7 19.Qa4 Ne5 20.Rac1 Bd6 21.Nxd6+ Qxd6  
22.Qb3+ Kg6 23.Bc5 Qd7 24.Qe3 Qd5 25.Rf4 f5 26.Rcf1 Qd3  
27.Qf2 h5 28.Kh1 Ng4 29.Qh4 Nh6 30.Qe7 Rhe8 31.Qb7 Rad8  
32.h3 Re6 33.Re1 Qd2 34.Rff1 Qxb2 35.Qc7 Rd3



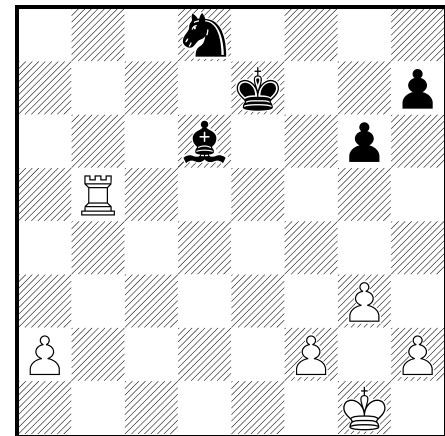
36.Qc8 Qxa2 37.Ra1 Qc4 38.Rfc1 Qd5 39.Rxa6 Rd1+ 40.Rxd1  
Qxd1+ 41.Kh2 Rxa6 42.Qxa6+ Kh7 43.Qe6 Qd3 44.Qe5 Qa6  
45.Be3 Nf7 46.Qxf5+ Qg6 47.Qc5 Nd6 48.Bf4 Nf5 49.b5 e3  
50.Qc2 e2 51.Qxe2 Nd4 52.Qe5 Qd3 53.Qxh5+ Kg8 54.Qd5+  
Kh7 55.Qh5+ Kg8 56.Qd5+ Kh7 57.Be5 Qf1 58.Bxd4 Qf4+  
59.Kh1 1-0

The defending US Woman's Champion, Jennifer Shahade, formerly of Philadelphia, but now a resident of New York, finished in a three way tie for first and was forced into a blitz playoff with Anna Hahn and Irina Krush. After the dust settled, Anna Hahn was the victor, and the new 2003 US Woman's Champion.

**Jennifer Shahade (2330) - Eugene Perelshteyn (2442) [B14]**

United States Championship 2003 USA (8), 17.01.2003

1.e4 c6 2.d4 d5 3.exd5 cxd5 4.c4 Nf6 5.Nc3 g6 6.Qb3 Bg7  
7.cxd5 0-0 8.Be2 Na6 9.Bf4 Qb6 10.Qxb6 axb6 11.d6 exd6  
12.Bxd6 Rd8 13.Ba3 Rxd4 14.Nf3 Rd8 15.0-0 Be6 16.Ng5 Nd5  
17.Nxe6 Nxc3 18.Bxa6 fxe6 19.Bc4 Nd5 20.Rad1 Rac8 21.Bb3  
b5 22.Rfe1 b4 23.Bxb4 Nxb4 24.Bxe6+ Kf8 25.Bxc8 Rxc8  
26.Rd7 b5 27.g3 Nc6 28.Rc1 Bxb2 29.Rc2 Be5 30.Rd5 Rd8  
31.Rxd8+ Nxd8 32.Rc5 Bd6 33.Rxb5 Ke7



**Gennady Zaitshik (2468) - William Paschall (2444) [B63]**

United States Championship 2003 USA (8), 17.01.2003

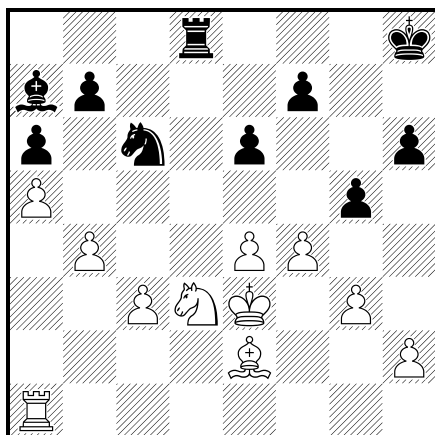
1.e4 c5 2.Nf3 Nc6 3.d4 cxd4 4.Nxd4 Nf6 5.Nc3 d6 6.Bg5 e6  
7.Qd2 Qb6 8.Nb3 a6 9.Be2 Be7 10.0-0 0-0 11.a4 Qc7 12.a5  
Bd7 13.Rfd1 Kh8 14.f3 h6 15.Bxf6 Bxf6 16.Qxd6 Qxd6  
17.Rxd6 Rfd8 18.Na4 Be8 19.Rxd8 Rxd8 20.c3 Nb8 21.Nac5  
Bc6 22.Kf2 Nd7 23.Nd3 Be7 24.Nd4 Nb8 25.Nxc6 Nxc6  
26.Ke3 g5 27.g3 Bd6 28.f4 Bb8 29.b4 Ba7+

34.a4 Ne6 35.Rb7+ Nc7 36.h4 Kd7 37.Rb8 Ne8 38.Rb7+ Bc7  
39.Kg2 Nd6 40.Rb1 Ne4 41.Rd1+ Nd6 42.Kf3 Ke6 43.Rc1 Bd8  
44.Rc6 Kd7 45.Rc5 Bb6 46.Re5 Nc4 47.Re2 Nd6 48.Kg4 h6  
49.h5 g5 50.f4 gxf4 51.gxf4 Bd8 52.Rd2 Ke6 53.f5+ Kd7  
54.Rd5 Bg5 55.a5 Kc6 56.Re5 Nc4 57.Re6+ Kd7 58.a6 Ne3+  
59.Kh3 Nxf5 60.Re5 1-0

**Book Reviews by Dr. Ira Lee Riddle**

The chess publishing world is still very active these days. I once read that more books are written about chess than any other game, and chess is second only to the Bible in number of books written and published. I can easily believe it. This issue's set of books starts off with two for beginners and three for much more advanced players. All five are published by Everyman Chess and distributed in the US by the Globe Pequot Press.

The lower-level books are **starting out: the caro-kann** by Joe Gallagher (\$16.95) and **starting out: the queen's gambit** by John Shaw (also \$16.95). Both of these are aimed at the beginner to intermediate player who wishes to do a little studying and learning. Both books are current with games through 2002, including some from the World Open! I liked the format and writing style in both of these. Diagrams are frequent, and the annotations are both understandable



and not too deep to be followed. Both are recommended highly.

Angus Dunnington returns with **understanding the sacrifice** (\$19.95). This is the best of the other three that arrived in one package. I noticed games from 1961 through 2000. Each chapter looks at a different sacrifice (the queen chapter was most interesting!) by playing through games. The annotations are fairly deep, but are easy to follow for the most part due to the large number of diagrams. I liked this one, and it really was not all that far above my abilities. The style of writing makes me think that Dunnington is a good teacher. A games index would have been helpful.

The final two books are for advanced players. **sicilian kan** by John Emms (\$19.95) and **classical dutch** by Jan Pinski (\$19.95) are oriented to the defensive side of the board played by Black. Both include games through 2001 only. Both go into the reasons behind the openings. Again, these are for the more advanced players.

A second shipment arrived from Cardogan, and they are varied in strengths. The first one, and the most fun, is Graeme Buckley's **Multiple Choice Chess II** (\$19.95). The games are quite serious ones, of course, as are the analyses, but these analyses of the various choices are also written a bit tongue-in-cheek. "You didn't fall for that trap, did you?" (Of course I did!) Topics covered include attacks, Bishops, R+P vs. Minor pieces, and Endgames. Lots of diagrams. Recommended for beginners and up.

**Taming the Sicilian** by Nigel Davis (\$19.95) looks at ten forms of the Sicilian Defense to 1 e4. Davis bases his plans on fianchettoing the KB. He brings in games through 2001 and has a lot of diagrams. The analyses are deep, sometimes covering three variations on one move. This is for the expert and above.

**Chess Brilliancy** by Iakov Damsky (\$21.95) is subtitled "250 historic games from the masters," and the subtitle says it all. Damsky defines a brilliancy as one that helps the player and cannot be too obvious. The first brilliancy prize was awarded for Henry Edward Bird - James Mason, NY 1876. The jury consisted of one man, the sponsor of the event and the owner of the cafe where the tournament was held. Damsky presents a lot of games, with annotations, and also brings in some of the complaints as to judging, etc., and how the standards have developed over the years. From a historical view, this is a terrific collection. Anyone with an interest in chess history would enjoy this one.

**Alex's Column** By Alex Dunne

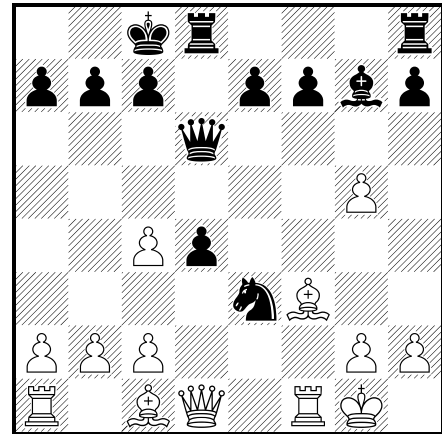
**ALWAYS KEEP A GOOD MAN DOWN**

Steve Capp is always a dangerous opponent. In this game Steve never gets a chance to show his attacking prowess, for whenever one of his pieces gets active, Black simply exchanges it off.

**Steve Capp(2146) - Alex Dunne [B00]**  
Syracuse, 2002

1.e4 Nc6 2.Nc3 Nf6 3.f4 d5 4.e5 d4 What opening is this? It most resembles the Alekhine's Defense after 1. e4 Nf6 2. Nc3 d5 3. e5 d4 when 5. exf6 dxc3 6. fxg7 cxd2+ leads to equality. Capp's choice is too passive. 5.Nb1 Nd5 6.d3 g5! After this jab, Black dominates the center. With the better development and

more space, Black could hardly ask for more by Move 6. 7.fxg5 Nxe5 8.Nf3 Bg4 9.Be2 Bxf3 10.Bxf3 Bg7 11.0-0 Qd6 As the h-file can be opened by ...h6 and the g-file is ready for occupation, Black plans to castle long and then attack White with all his forces. To thwart this plan, White seeks some exchanges. Black is happy in that case, too. 12.Na3 0-0-0 13.Nc4 Nxc4 14.dxc4 Ne3



Will Black's advanced e-Pawn be strong or weak? Will White's awkward Pawn structure, and Black's domination of the d-file, the e-Pawn be deadly? or will the e-Pawn, far from Black's support, be cut off and surrounded? 15.Bxc3 dxe3 16.Qe1? Now White just loses. After 16. Qxd6! Rxd6 17. c3 f6 18. Rae1 fxg5, White has fair drawing chances due to the Bishops of opposite colors. 16...Qc5 17.Kh1 Rd2 18.Qh4 Rd4 19.Qh3+ Kb8 20.Bd5 e6 21.b4? Ingenious, but Black has a complete answer, winning material. 21...Qd6 22.c3 e2 23.Rfe1 Rd1! 24.Raxd1 If 24. Bf3 Rxa1 25. Rxa1 Qd2 26. Qg3 Bxc3 27. Rb1 e1(Q)+ 28. Rxe1 Qxe1+ 29. Rxe1 Bxe1 leaves Black a Rook ahead. 24...exd1Q 25.Rxd1 exd5 26.cxd5 a6 27.c4 Re8 28.Qf3 Qxb4 29.Qf1 Qe7 30.Rb1 Be3 31.h3 Qe1! Black simplifies to an easy win: 32. Kh1 Be5+ 33. Kh1 Qxb1 34. Qxb1 Bg3 will soon leave Black an easy win. 0-1

**Bruce Leverett Annotates Games from the PSCF Junior Championship**

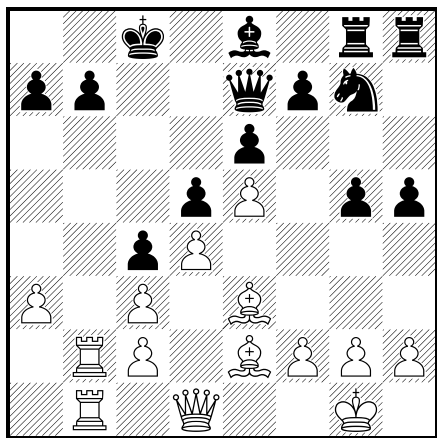
**Blocki - Mezheryski [C18]**

PSCF Junior Championship, Age 15-16, 2002

Notes by Bruce Leverett

1.e4 e6 2.d4 d5 3.Nc3 Bb4 4.e5 c5 5.a3 Bxc3+ 6.bxc3 Qb6 [6...Qc7 is the usual move. After 7.Qg4 Ne7 8.Qxg7 Rg8 9.Qxh7 cxd4 White can not recapture the d pawn: 10.cxd4?? Qc3+] 7.Qg4 Ne7 8.Nf3 [After 8.Qxg7 Rg8 9.Qxh7 cxd4 10.Qd3 White would have a solid extra pawn.] 8...Nbc6 9.Be2 Nf5 10.0-0 Bd7 [After 10...cxd4 11.Bd3! White gets some compensation for the pawn.] 11.Be3 c4 12.Rfb1 Qc7 13.Ng5 h6 14.Nf3? [14.Nh3 prepares Nf4-h5 etc.] 14...0-0-0 15.Nh4 Nxh4 [15...Nce7 looks OK.] 16.Qxh4 g5? 17.Qg3 Rdg8 18.Bh5 Be8 19.Rb2 Ne7 20.Qf3 Nf5 21.Rab1 Qe7?! After 21 ... b6 22 Rb4 followed by 23 a4 White will eventually open a file on the queenside and double his rooks on it. But why not 21 ... Bc6? 22.Qd1 Ng7 23.Be2 h5





24.Rxb7! Counting points isn't enough; you have to figure out who can win after the trade. Only White can win here. 24...Qxb7 25.Rxb7 Kxb7 26.Qb1+ Kc7 27.Bxg5 Nf5 28.Bf6 Rh6 29.Qb4 Bc6 30.Qc5 Ra8 31.a4 a5 32.g3 Rh7 33.Bf1 Rh6 34.Bh3 Rg6 35.Bxf5 exf5 36.Qe7+ Kb6 37.Qxf7 Rgg8 38.Qxh5 Bxa4 39.Qxf5 Bc6 40.Be7 a4 41.Ba3 Rgb8 42.h4 Ka5 43.Qf6 Rb1+ 44.Kg2 Bb5 45.Qd6 Ra6 46.Bb4+ Rxb4 47.cxb4# 1-0

More annotated games from the PSCF Junior in the next issue. These annotations are courtesy the Pittsburgh Chess Club *En Passant*, and were published in the January issue of that journal.

## Scholastic Corner By PSCF SE Scholastic Coordinator Dan Heisman

An update of Important Dates for 2002-2003:

- Feb 1 – PA Team Champ. East – Philadelphia Community College – Scholastic and HS/MS sections
- Feb 1-2 PA Team Champ. West - William Pitt Union, Univ. of Pittsburgh, Scholastic Reserve and Open
- Mar 8-9 – PA Scholastic Chess Championship – Bloomsburg, PA – about 120 trophies!

More detail on all of these events is available at [www.pscfchess.org/clearinghouse](http://www.pscfchess.org/clearinghouse).

One new event that got off to a flying start was the PA Junior Championships, held in Pittsburgh on Nov 2-3. I won't go into details since that event is covered elsewhere, but congratulations to all the age champions! This event, along with the new PA Team Championship West, better balances state championships between eastern and western PA.

The Philadelphia Junior (U18) Champion will be crowned at the March 28-30 Philadelphia (Open) Championship at the University of Penn. There is also some discussion about holding a Philadelphia Area Junior Invitational Championship to award the long-dormant Heisman-Shahade Trophy, but although funding should be available, so far a date where enough participation can be ensured has not been identified.

The Greater Philadelphia Scholastic Championships were held on Nov 3. All records were smashed as 139 entrants played, up significantly

from 112 a year ago. I bought additional unannounced trophies the week of the event because the advance entry was more than the previous record! Including the end of the year Delaware Valley Scholastic Grand Prix (DVGP) trophies, over 70 trophies were awarded, not counting the ribbons! For the second straight year there was a mild upset in the High School Section as Shipley sophomore Justin Komisarof won all his games and the title of 2002 Gr. Phila HS Chess Champion. Pennsbury took the team crown. In the Middle School Division, things held to form until the final round when the top 2 players – both girls! – met for the championship. That also resulted in a mild upset as second ranked Elizabeth Lakata of Murray Avenue beat top-rated Erica McLaughlin of Roslyn. National Champion Masterman won the school title and York Youth Chess Club the club title. In the Elementary section PA Elementary Co-champion Steve McLaughlin Jr. swept 5-0. Last year's co-champion Josh Bowman and 2<sup>nd</sup> grader Keane Bacso finished a half point back. McLaughlin and Bowman both represented Main Line CC, which won the club championship, and The Harrisburg Academy edged out Trimmer Elementary for the school championship.

On the subject of DVGP, the tournaments have turned into big successes, with the non-championship event hosted by Huntingdon Valley Chess Society Juniors in November drawing about 100 participants! Thanks to Masterman coach Steve Shutt, who was able to procure playing sites at Philadelphia Community College to replace St. Joseph's Prep HS as an inner-city host, and to Dr. Ira Riddle for running the Philadelphia CC events. Special mention of a new, non-DVGP event with \*\*\*FREE\*\*\* entries: Steve Shutt has arranged for the University of the Arts in Philadelphia to host a tournament on Sunday, January 26. There will be six sections: a rated and an unrated section each for middle school, high school, and college. So if you have a friend who wants to try a tournament but doesn't want to start with a rated event, this may be the one for him or her!

Congratulations to Alisa Melekhina of Philadelphia, who represented the US in the World Youth Championships in the Girls Under-12 Division. Alisa, who came in 4<sup>th</sup> in the Girls Under-10 Division last year, had a positive score in her first try at the much harder U-12 age group. I know Alisa is planning on being a contender next year so we all wish her good luck!

Ratings: Although the USCF's special lower bonus limit expired on Dec 31, 2002, there will still be bonus points and it should still be easy for players rated below 1000 to pick up over 100 points when they have a really good result.

According to Mike Nolan, PA Scholastic memberships have risen from 1198 to 1390 in one year(!). Congratulations to all the scholastic organizers and players for making Pennsylvania a renewed hotbed for scholastic chess.

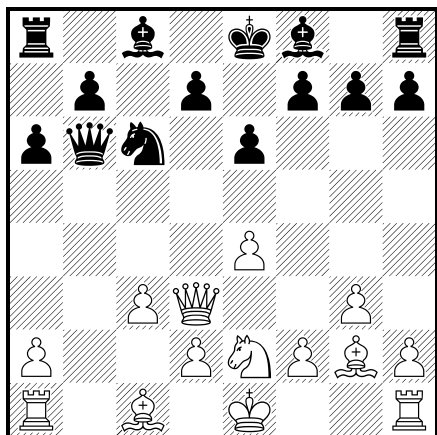
## Chess In Centuries Past By Ross Nickel

### The Chigorin Attack in the French Defense

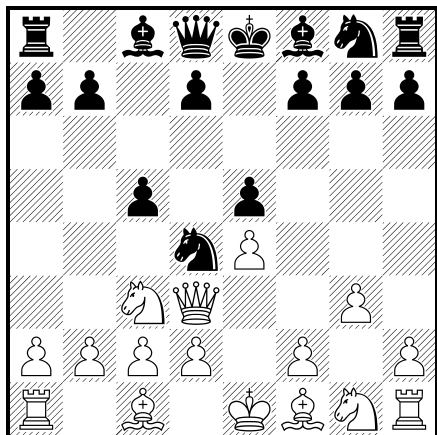
An obscure, overlooked response to the French Defense (1.e4 e6) is 2.Qe2, which has been called the Chigorin Attack. It avoids standard lines and current analysis. It is a closed system that often keeps the pieces on the board for a while. This can result in positions of curious esthetics, not to everyone's taste. Once an opponent of mine said that this was the worst possible move he had ever seen against the French. Consider the nice position obtained for White below:

**Chigorin - Tarrasch [C00]**

1.e4 e6 2.Qe2 c5 3.Nc3 Nc6 4.Nf3 a6 5.g3 Nd4 6.Qd3 Qb6  
7.Bg2 Ne7 8.Nxd4 cxd4 9.Ne2 Nc6 10.c3 dxc3 11.bxc3



How often do you have a chance to place the Queen on d3, in front of the d-pawn? This is neat to do, but be aware of a trap that Black can set by protecting his Knight twice: 1.e4 e6 2.Qe2 c5 3.Nc3 Nc6 4.g3 Nd4 5.Qd3 e5



6.Bg2?? [or 6.Nf3?? ] 6...c4! 7.Qxc4 Nxc2+ and then picks up the Rook on a1. This trap can be avoided by playing 6.Nce2.

Another interesting option can be mentioned here. After 1.e4 e6 2.Qe2, Black may play 2...e5. White can stay with a closed game, or open things up with 3.f4. If Black plays 3...fxe4, White can play 4.Qf3, which is the Breyer variation of the King's Gambit attained in four moves instead of the usual 3 moves. Or White can move 4. Qf2 which is a variation of the King's Gambit that cannot be arrived at by playing the King's Gambit directly!

In chess, some lessons are mentally painful. This column describes one such experience of mine. Perhaps it can serve to allow you, gentle reader, to avoid this kind of oversight and thus spare you some anguish. The occasion was the 1970 VFW Post 396 Championship in the Bridesburg section of Philadelphia. The chess club there held two yearly tournaments - the Delaware Valley Open and this Championship. It featured one game a week for five weeks and was open to everyone.

My game in the final round would decide the winner of the

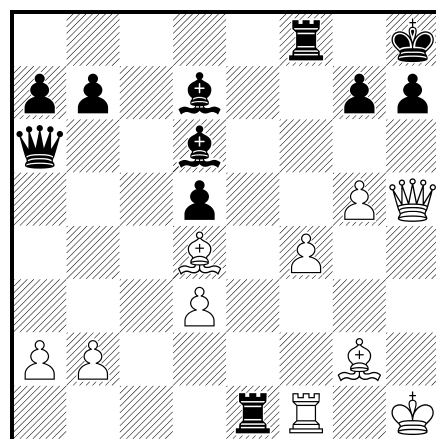
tournament. My worthy opponent was Andrew Chressanthis, a decent player and an affable gentleman. He had four wins and only needed a draw to come in first. I had three and a half points and needed to win in order to beat him out.

As White I played the Chigorin Attack against his French Defense. The typical early maneuvering led to tactical play later on. On his 27<sup>th</sup> move, Black played 27. ...Rxe1 to reach the diagrammed position below. Without thinking, to save time on the clock, I responded quickly with the automatic recapture 28.Rxe1. Shortly thereafter, I realized that 28.g6! , although it gives up the other Rook, wins the game for White. Andy then recognized the threat and did not give me a second chance. Trading Rooks was a mistake on his part but I failed to take advantage of it, so he deservedly won the event.

**Ross Nickel - Andrew Chressanthis [C00]**

Post 396 Open (5), 04.06.1970

1.e4 e6 2.Qe2 c5 3.g3 Nc6 4.Bg2 Be7 5.f4 d6 6.Nc3 Bd7 7.Nf3 Nh6 8.d3 0-0 9.Bd2 Kh8 10.0-0 f5 11.Rae1 Rb8 12.Nd1 Nd4 13.Nxd4 cxd4 14.c3 Qb6 15.Kh1 Bf6 16.e5 Be7 17.cxd4 Qxd4 18.Be3 Qa4 19.Nc3 Qa6 20.exd6 Bxd6 21.Bd4 Ng4 22.h3 Nf6 23.g4 fxg4 24.hxg4 Rbe8 25.g5 Nd5 26.Nxd5 exd5 27.Qh5 Rxe1



28.Rxe1 [28.g6! Rxf1+ 29.Bxf1 h6 30.Qxh6+ Kg8 31.Qxg7#] 28...Qxd3 29.Bxg7+ Kxg7 30.Qh6+ Kg8 31.Qxd6 Bc6 32.Qe6+ Kh8 33.Kh2 Qd4 34.Rf1 Qxb2 35.g6 Qf6 1/2-1/2

The moral to be taken from this game is to take a moment to look at even the most routine moves.

**Postal Potpourri** By John Caliguire

Welcome to another edition of Postal Potpourri! First an update on the CCLA-GameKnot match: it is a little bit lopsided, for the North American side is behind 9-3 with 18 games to finish. My own personal games are still going and are unclear yet. (Since John wrote this, further results have come in, and GameKnot has won the match. John's games are still undecided. -ed.)

Second thing is a call for all PA correspondence players! Both USCF and CCLA will need you this year. PA 2003 will begin soon and make sure, if you can, to enter one type of PA championships: either the postal or the e-mail one. It would be great if we get some dual entries.. I know I am going to try both if I am able to. Then this is the year CCLA will begin another Team championship in July but we need to



form teams as early as possible (yes as you can tell I am the team captain) so if we have any CCLA members out there who wish to play this year please let me know ASAP. Thank you!

And one final note: I want to thank my PA Keystone teammates for the great job they are doing in TC XII and to my teammate and opponent in the CCLA Grand National finals, Neal Munchak, for such a fine battle that game has come in second place in CCLA's 2001 best game of the year contest. So in closing I hope to see a lot of new PA correspondence faces in our PA Championships and all are welcome to join us in CCLA's team championship XII which will begin in July. Until next time.....

**XII CCLA Team Championship (2001-2003)**

**Division I**

- Rank Team Won Lost % GR
- 1 Pennsylvania Keystones "A" 24½15½ .61320
- 2 Illinois Knights 22½13½ .62524
- 3 Kalifornia Kingsss 17½20½ .46122
- 4 NJ Jiants 16½31½ .34412 81 81

**Division II**

- 1 Los Diablos Tejanos & the Louisiana Man 44½25½ .63610
- 2 Nassau Rocket Scientists 43 15 .74122
- 3 Cross Country Gang 39½19½ .66921
- 4 Maryland 38 26 .59416
- 5 Team a8 & Friends 31 35 .47014
- 6 Auburn & Allies 29½28½ .50922
- 7 Pennsylvania Keystones "B" 20½44½ .31515
- 8 Iron Knights 18½44½ .29417
- 9 Illinois Squires 16½42½ .28021 281 281

**Division III**

- 1 Idaho Mountaineers 43 19 .694
- 2 Multi-State Mates 40 22 .64518
- 3 MN-WI Norsemen 34½34½ .50011
- 4 Canadian Snowbirds 33 28 .54119
- 5 CaroKannvicts 31½29½ .51619
- 6 VFW Knights 31½32½ .49216
- 7 Pennsylvania Keystone "C" 26½36½ .42117
- 8 Nationals 24½43½ .36012
- 9 Illinois Woodpushers 20½39½ .34220 285 285

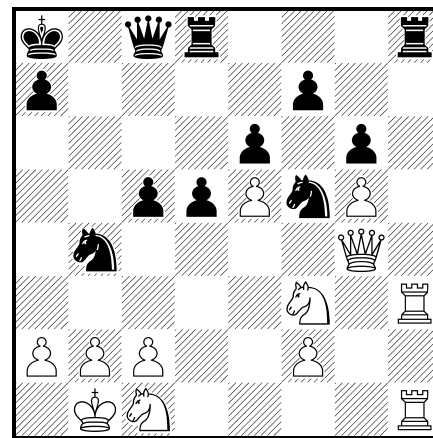
**FROM THE GAMEKNOT\_CCLA MATCH**

"The match started October 1, 2002. Two games are to be played at each board. The reflection time is 7 days per move and unused time will not be carried forward.

"Although several games are still in progress GameKnot has won the match already. On January 10, the second draw between Chris Sergel and John Vehre (board 4) gave GameKnot the necessary 15.5 points. Congratulations to the GameKnot team and team captain Igor Rusinov for a well-deserved victory." - quoted from the match website.

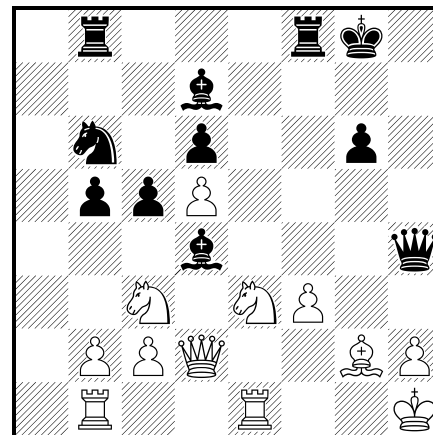
**florinserban - jcaliguire [C13]**

1.e4 e6 2.d4 d5 3.Nc3 Nf6 4.Bg5 Be7 5.e5 Ng8 6.Be3 b6 7.Qg4 g6 8.h4 h5 9.Qg3 Ba6 10.Bxa6 Nxa6 11.Bg5 Bxg5 12.hxg5 Qd7 13.0-0-0 Ne7 14.Kb1 0-0-0 15.Rh3 Nf5 16.Qf4 Kb7 17.Nf3 c5 18.Rdh1 Qc8 19.Ne2 Nb4 20.dxc5 bxc5 21.Nc1 Ka8 22.g4 hxg4 23.Qxg4 Black to play



**jcaliguire - florinserban [B23]**

1.e4 c5 2.Nc3 d6 3.Nge2 Nf6 4.g3 g6 5.Bg2 Nc6 6.0-0 Bg7 7.Nd5 e6 8.Ne3 0-0 9.d4 Qc7 10.d5 exd5 11.exd5 Ne7 12.Nc3 b6 13.a4 a6 14.Nc4 Bg4 15.f3 Bd7 16.Re1 Nc8 17.Bg5 Rb8 18.Qd2 b5 19.axb5 axb5 20.Ne3 Nb6 21.Rab1 h6 22.Bxf6 Bxf6 23.Ng4 Bd4+ 24.Kh1 h5 25.Ne3 h4 26.gxh4 Qd8 27.h5 Qh4 28.hxg6 fxg6 White to play



**PA POSTAL TOURNAMENT REPORT as of 1/14/03**  
**T.D.: Ira Lee Riddle (1997, 1998, and 2000 are now over)**

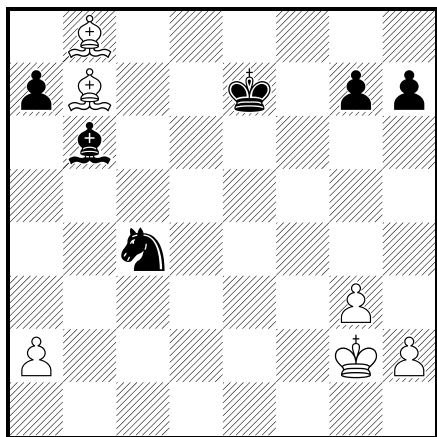
Section 1997PA-F				
Mike Holsinger	1742	xxx	F-F	F-F U-U
John Caliguire	1785	W-W	xxx	L-D U-U
GARDNER JOHNSON JR.	1959	W-W	W-D	xxx U-U
G. J. Stueber	2104	U-U	U-U	U-U xxx
Section 1998PA-F				
John Caliguire	2003	xxx	W-D	D-D 2.5
Gardner Johnson	2107	L-D	xxx	F-F 0.5
ALEX MATHIOPOULOS	2078	D-D	X-X	xxx 3.0
Section 1999PA-F				
Gardner Johnson	2107	xxx	x-x	x-x x-x
Greg Borek	1813	x-x	xxx	x-x x-x
John Caliguire	2003	x-x	x-x	xxx x-x
Wm. Nast, Jr.	1676	x-x	x-x	x-x xxx
Section 2000PA-F				
John Caliguire	2003	xxx	L-D	W-W W-W
GARDNER JOHNSON JR	2107	W-D	xxx	W-W W-W
Mike Holsinger	1803	L-L	L-L	xxx U-U
Eric Crumb	UNR	L-L	L-L	x-x U-U

The final games from the 1997, 1998, and 2000 PSCF Postal Championships have all been adjudicated a draw by Alex Dunne. Players in all three games were John Caliguire and Gardner Johnson.

**Caliguire - Johnson [A29]**

2000 PA Finals

1.c4 e5 2.g3 Nf6 3.Bg2 d5 4.cxd5 Nxd5 5.Nc3 Nb6 6.d3 Be7 7.Nf3 Nc6 8.0-0 0-0 9.Be3 Be6 10.d4 exd4 11.Nxd4 Nxd4 12.Qxd4 Qxd4 13.Bxd4 c6 14.Rfd1 Rfd8 15.Ne4 Bg4 16.f3 Bf5 17.Rac1 Bxe4 18.fxe4 Rd7 19.e3 c5 20.Bh3 Rd6 21.Be5 Rxd1+ 22.Rxd1 Kf8 23.b3 f6 24.Bb2 Rd8 25.Rxd8+ Bxd8 26.e5 Nd5 27.Bg2 Nxe3 28.Bxb7 fxe5 29.Bxe5 c4 30.bxc4 Nxc4 31.Bb8 Bb6+ 32.Kg2 Ke7

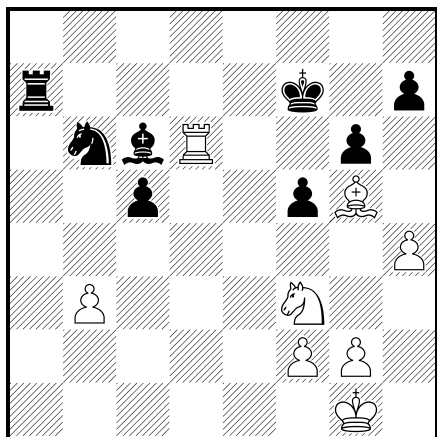


33.Kf3 Ke6 34.Bf4 a5 35.Ke2 Kf5 36.Ba6 Ne5 37.Bc8+ Ke4 38.Bb7+ Kf5 39.a4 h5 40.h4 Ng6 41.Bd2 Ne5 42.Bd5 Bd8 43.Bb3 Bb6 44.Bc2+ Kg4 45.Bf4 Nc6 46.Ke1 Nd4 47.Bd1+ Kh3 48.Bxh5 Nf5 49.Bd1 Nfg3 50.h5 Kh4 51.h6 gxh6 52.Bxh6 Ne4 53.Bc2 Nc5 54.Kd2 Kh5 55.Bf4 Kg4 56.Be5 ½-½

**Johnson - Caliguire [D45]**

1998 PA Finals

1.Nf3 d5 2.d4 c6 3.c4 Nf6 4.Nc3 e6 5.e3 Nbd7 6.Qc2 Bd6 7.Be2 0-0 8.0-0 Re8 9.b3 Qe7 10.Bb2 b6 11.e4 dxe4 12.Nxe4 Nxe4 13.Qxe4 Bb7 14.Bd3 f5 15.Qh4 Qxh4 16.Nxh4 c5 17.d5 g6 18.Rfe1 exd5 19.cxd5 Rxe1+ 20.Rxe1 Rd8 21.Bc4 a6 22.a4 b5 23.axb5 axb5 24.Bxb5 Bxd5 25.Rd1 Nb6 26.Bf6 Rf8 27.Bg5 Kf7 28.Nf3 Ra8 29.h4 Ra7 30.Bc6 Bxc6 31.Rxd6

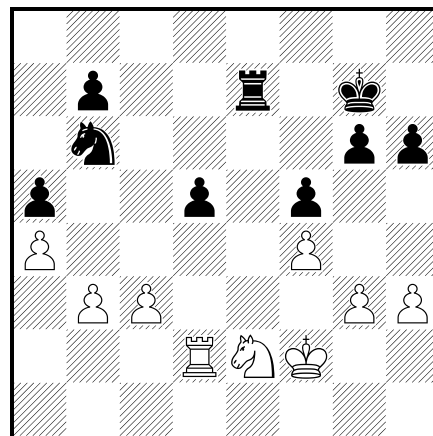


31...Bxf3 32.Rf6+ Kg7 33.Rxb6 Rb7 34.Rd6 Be4 35.f3 Bc2 36.Rc6 Bxb3 37.Rxc5 h6 38.Bf4 Rd7 39.Kf2 Kh7 40.Rc8 Be6 41.Rb8 Kg7 42.Rb6 Re7 43.Bd2 Bc4 44.Bc3+ Kh7 ½-½

**Johnson - Caliguire [C08]**

1997 PA Finals

1.e4 e6 2.d4 d5 3.Nd2 a6 4.Ngf3 c5 5.exd5 exd5 6.Be2 Nc6 7.0-0 Nf6 8.Re1 Be6 9.Bd3 Qb6 10.Bf5 Nxd4 11.Nxd4 cxd4 12.Nb3 Bb4 13.Bd2 Bxd2 14.Qxd2 0-0 15.Nxd4 Bxf5 16.Nxf5 Rad8 17.Rad1 Rfe8 18.c3 Ne4 19.Qd4 Qxd4 20.Nxd4 Nc5 21.Kf1 Na4 22.Rd2 g6 23.Rxe8+ Rxe8 24.Ne2 Nb6 25.b3 Kg7 26.a4 a5 27.f4 h6 28.Kf2 f5 29.g3 Re7 30.h3



30...Kf7 31.Kf3 Kf6 32.Rd4 Ke6 33.g4 Kf6 34.Rd3 fxe4+ 35.hxe4 h5 36.g5+ Kf7 37.Rd1 Re8 38.Nd4 Re4 39.Nc2 Re8 40.Rd3 Rh8 41.Ne3 Ke6 42.f5+ gxf5 43.Kf4 Rf8 44.Rd1 Nd7 45.Rxd5 h4 46.Rxf5 Rxf5+ 47.Nxf5 h3 48.Nd4+ Kf7 49.Nf3 Nc5 50.b4 axb4 51.cxb4 Nxa4 52.Kg4 Nc3 53.Kxh3 Nd5 54.Ne5+ Ke6 55.Nd3 Kf5 56.Kh4 b6 57.Kh5 Ke4 58.Nf2+ Kf3 59.Nd1 Ke2 60.Nb2 b5 61.Kg6 Nxb4 62.Kf7 Nd5 ½-½

**UPCOMING PSCF EVENTS**

**March 7. (QC) Pennsylvania Quick Chess Championship.** 7SS, G/10, T/D3. Kehr College Union, Bloomsburg University, Bloomsburg PA 17815-1307 (off I-80). EF: \$9 rec'd by 2/15, \$15 after, PSCF \$5 OSA. \$\$ (400 b/65): 125-75-50, U1800 \$45, U1600 \$40, U1400 \$35, U1200 \$30. Trophies: F, G, U600, Unr. Reg: 6-6:30pm. Rd 1: 7pm. Reg. ratings used. HR: Mention "PA States" before 2/1 for best rate; Days Inn (Exit 224 off I-80) 570-275-5510 50-50-50-50-50; Econolodge (Exit 232 off I-80) 570-387-0490 54-54-54-54. **Ent:** PSCF, c/o Tom Martinak, 320 N. Neville St. Apt 22, Pittsburgh PA 15213-1656. Checks payable to PSCF. **Info:** gv07@hotmail.com 610-649-0750 W.

**March 8 & 9 GPP:6 Pennsylvania Bloomsburg Open & Pennsylvania Collegiate Championship.** 5SS, G/90, T/D5. Kehr College Union, Bloomsburg University, Bloomsburg PA 17815-1307 (off I-80). EF: \$29 rec'd by 2/15, \$39 after, PSCF \$5 OSA. \$\$ (1080 top 2 guaranteed, others b/60): 180-120, U2200 \$115, U2000 \$110, U1800 \$105, U1600 \$100, U1400 \$95, U1200 \$90, U1000 \$85, Unr \$80. College Trophies: 1st-4th, 1st-2nd team (4 players). Reg: 8:45-9:30pm. 10-2-5:30, 9-1. Bye: limit 1, ask by rd 2. HR: Mention "PA States" before 2/1 for best rate; Days Inn (Exit 224 off I-80) 570-275-5510 50-50-50-50-50; Econolodge (Exit 232 off I-80) 570-387-0490 54-

54-54-54. **Ent:** PSCF, c/o Tom Martinak, 320 N. Neville St. Apt 22, Pittsburgh PA 15213-1656. Checks payable to PSCF. **Info:** gv07@hotmail.com 610-649-0750 W.

### A Heritage Event

**March 8 & 9. 2003 Pennsylvania State Scholastic Championships.** 122 Trophies!! (90 Individual, 32 Team). Kehr College Union, Bloomsburg University, Bloomsburg PA 17815-1307 (off I-80). 8 sections (Sat & Sun 3/8 & 9 unless indicated): **EF: K-3 Open:** (Sat 3/8 only) \$28. **K-6 U800:** (Sat 3/8 only) \$26. **K-9 U1000:** (Sun 3/9 only) \$26.25. **K-6 Open:** \$27.50. **K-8 Open:** \$28.50. **K-12 U1000:** \$25.50. **K-12 U1300:** \$26.50. **K-12 Open:** \$29.50. **All:** 5SS. EFs if rec'd by 2/15, \$10 more rec'd 2/16-3/1, \$20 more after 3/1. PSCF memb. incl. \$\$ for Castle Camp (scholarships) & (if possible) 1st team, player in K-6, K-8 & K-12 Opens for Nationals, Denker. Reg Fri 3/7 7-9 pm at site, late entries Sat 3/8 9:30-10:15 am at site get 1st Rd 1/2 pt. bye. Send name, USCF ID & exp, section, grade, school/club, birthday, gender, address, phone, email + EF. Each change at site \$5. Rds (Sat 3/8 1-day sections): G/40 T/D5; 10-11:45-2-3:45-5:30; (Sun 3/9 K-9 U1000): G/40, T/D5; 9-10:30-12:30-2-3:30; (2-day sections): G/90, T/D5; 10-2-5:30, 9-1. HR: Mention "PA States" before 2/1 for best rate; Days Inn (Exit 224 off I-80) 570-275-5510 50-50-50-50-50; Econolodge (Exit 232 off I-80) 570-387-0490 54-54-54-54. **Ent:** PSCF, c/o Tom Martinak, 320 N. Neville St. Apt 22, Pittsburgh PA 15213-1656. Checks payable to PSCF. **Info:** <http://www.pscfchess.org/pascholasticchamp/>, Dan: danheisman@comcast.net 610-649-0750; Rich: Rich\_barbara@hotmail.com 412-767-9228. W.

**March 22. PSCF Camp Hill Quads.** 3-RR. G/60. Cleve J Fredericksen Library, 100 N 19th St., Camp Hill PA 17011-3900. **EF:** \$20, PSCF required \$5 OSA. \$\$ 50 to 1st in each quad. Reg 9-9:45am. Rds 1 at 10am. **Info/Directions:** Marvin Wilson (h) 717-975-2895 penndems@aol.com (w) 717-605-3672 mwilson@daps.dla.mil **Director:** Dr. Ira Lee Riddle, 215-674-9049, iralee@aol.com (Note: A scholastic section will be added if entries warrant.) W.

**April 12. PSCF Pittsburgh Quads.** 3-RR. G/60. Dining Rooms A & B, 1st Floor, William Pitt Union, Univ. of Pittsburgh, 5th Ave. & Bigelow Blvd., Pittsburgh PA 15213. **EF:** \$10, PSCF required \$5 OSA. \$\$ 20 to 1st in each quad. Reg ends 10:30am. Rds 11am - 1:15pm - 3:30pm. **Info:** 412-681-7590. **Ent:** Tom Martinak, 320 N. Neville St. Apt 22, Pittsburgh PA 15213-1656. Checks payable to University of Pittsburgh CC. W. *Sponsored & Organized by the University of Pittsburgh Chess Club.*

**May 3. PSCF FMCC Quads.** 3-RR. G/60. Franklin-Mercantile Chess Club, 1420 Walnut St., Suite 460, Philadelphia PA 19102. **EF:** \$25, \$5 discount for FMCC members, PSCF required \$5 OSA. \$\$ 50 to 1st in each quad. Reg 9-9:45am. Rd 1 at 10am. **Ent/Info:** Dr. Ira Lee Riddle, 400 Newtown Rd., Warminster PA 18974-5208, 215-674-9049, iralee@aol.com

**June 21. PSCF Camp Hill Quads.** 3-RR. G/60. Cleve J Fredericksen Library, 100 N 19th St., Camp Hill PA 17011-3900. **EF:** \$20, PSCF required \$5 OSA. \$\$ 50 to 1st in each quad. Reg 9-9:45am. Rds 1 at 10am. **Info/Directions:** Marvin Wilson (h) 717-975-2895 penndems@aol.com (w) 717-605-3672 mwilson@daps.dla.mil **Director:** Dr. Ira Lee Riddle, 215-674-9049, iralee@aol.com (Note: A scholastic section will be added if entries warrant.) W.

## PSCF GOVERNANCE

PSCF Webpage address: <http://www.pscfchess.org/>

### PSCF OFFICERS:

**President:** Tom Martinak; 320 N Neville St Apt 22; Pittsburgh 15213; martinak\_tom\_m@hotmail.com  
**Vice-President - East:** Dr. Ira Lee Riddle; 400 Newtown Road; Warminster 18974; 215-674-9049; iralee@aol.com  
**Vice-President - Central:** Greg Vaserstein; 1152 Smithfield Cir; State College 16802; gv07@hotmail.com  
**Vice-President - West:** Bob Dudley; 107 Crosstree Rd.; Moon Township 15108; bgdudley@compuserve.com  
**Secretary:** Brian Sheinfeld; 1014 S Waterford Way; Mechanicsburg 17050; sheinee@hotmail.com  
**Treasurer:** Stan Booz, CPA; 252 W Swamp Rd, Suite 39; Doylestown 18901; 215-345-6651; stanbooz@comcast.net  
**Scholastic:** Steve McLaughlin, 2745 Pershing Ave; Abington 19001-2202; 215-784-5938; zugzwang1@erols.com  
**Western PA Schol. Coordinator:** Bob Ferguson; 140 School St.; Bradford 16701; 814-368-4974; amchess@amchess.org  
**SouthEastern PA Schol. Coordinator:** Dan Heisman; 1359 Garden Rd.; Wynnewood 19096; 610-649-0750; danheisman@comcast.net  
**Philadelphia Schol. Coordinator:** Steve Shutt; 871 N Woodstock St.; Philadelphia 19130-1439; 215-978-6867; steevs@earthlink.net  
**PSCF Historian:** Neil Brennen; chessnews@mindspring.com

### PSCF Life Members:

Howard Bogus, Stanley N. Booz, Greg Borek, Al Breaux, Jr., John Caliguire, Will Champion, Natal Carabello, Steve Coladonato, Donald H. Conner, Mike Cox, Frank Cunliffe, Leroy Dubeck, Bob Dudley, Alex Dunne, Roy C. Eikerenkoetter, Robert Ferguson, Ryan Ferguson, John Gibbons, Dan Heisman, Phillip Holmes, Joe Johnson, James Joline, Keith Kuhn, Tom M. Martinak, Allan Messinger, Glenn R. Mohler, Randy Moyer, Joseph Mucerino, William Nast, Ross Nickel, Ira Lee Riddle, Stanley Robertson, Michael Shahade, Richard Stoy, Mike Styler

### USCF Delegates:

Ira Lee Riddle, Dan Heisman, Eric Johnson, Tom Martinak, Alex Dunne

### USCF Alternate Delegates:

Tom Magar, Bob Ferguson, Stas Kriventsov, Ed Formanek, Norman Rogers, Stan Booz, Delbert Tyler, Greg Vaserstein, Michael Cox, Robert Ross, Michael Schneider, Ed McKenney, Bob Dudley, Larry Pugh, Keith Kuhn, Steve McLaughlin

Thank you for a recent donation to the PSCF by:

Rory E. Wasiolek

*The Pennswoodpusher* is the official quarterly publication of the Pennsylvania State Chess Federation. Advertising rates available on request. Editor is Neil Brennen; 439 East Marshall Street, Apartment 4; Norristown, PA 19401 chessnews@mindspring.com

Material in this publication may be reprinted by other magazines as long as credit is given to both the author and to *The Pennswoodpusher*. The PSCF is a 501(c)(3) non-profit organization, and donations are deductible to the extent allowed by law.

Dues are \$5 for students/adults/clubs, \$100 for Life memberships.

Address Corrections & PSCF Memberships should be sent to: Tom Martinak; 320 N Neville St. Apt 22; Pittsburgh, PA 15213-1656; martinak\_tom\_m@hotmail.com

**PSCF EVENT CROSSTABLES**  
**2002 Pennsylvania State Junior Championships**  
**Pittsburgh - 11/2&3/2002**

**Ages 17 & 18**

#	Name	Age	Team	Pre Rat	Post Rat	Rd 1	Rd 2	Rd 3	Rd 4	Rd 5	Score	Prize
1	Duff, Alex A	17		1698	1696	W4	W2	W5	L3	B-	4	1st Place & PA Age 17 Co-Champion
2	Sher, Mikhail	18		1667	1670	W3	L1	W4	B-	W5	4	2nd Place & PA Age 18 Champion
3	Schiff, Aaron J	17		1560	1579	L2	W5	B-	W1	W4	4	3rd Place & PA Age 17 Co-Champion
4	Sharif, Ernest J	18	MONRB	1397	1377	L1	B-	L2	W5	L3	2	4th Place
5	Gibson, Ian	17	NPHCB	885	880	B-	L3	L1	L4	L2	1	5th Place & Good Sportsmanship

**Ages 15 & 16 Open**

#	Name	Age	Team	Pre Rat	Post Rat	Rd 1	Rd 2	Rd 3	Rd 4	Rd 5	Score	Prize
1	Milisits, Ryan R	16	ALLDR	2155	2151	W4	W3	D2	W7	W8	4½	1st Place & PA Age 16 Champion
2	Opaska, Michael P	16		1802	1810	W8	D6	D1	W3	D4	3½	2nd Place
3	Sun, Zhipeng	16	FOXCH	1714	1710	W9	L1	W6	L2	W7	3	3rd Place
4	Harrison, Patrick W	16	FOXCH	1656	1663	L1	W8	D7	W6	D2	3	4th Place
5	Blocki, Jeremiah M	16		1753	1734	L6	W7	W9	H-	H-	3	5th Place
6	Burgwin, Douglas	16		1383	1452	W5	D2	L3	L4	W9	2½	6th Place
7	Siegele, Andrew B	16		1200	1215	B-	L5	D4	L1	L3	1½	
8	Berthoud, Kevin F	15		1528	1501	L2	L4	B-	D9	L1	1½	PA Age 15 Champion
9	Mezherytski, Kesha	16	MONRB	1244	1242	L3	B-	L5	D8	L6	1½	

**Ages 13 & 14 Open**

#	Name	Age	Team	Pre Rat	Post Rat	Rd 1	Rd 2	Rd 3	Rd 4	Rd 5	Score	Prize
1	Jampole, Ezra A	13	ALLDR	1554	1571	W4	W3	W5	D2	W7	4½	1st Place & PA Age 13 Champion
2	Waruszewski, Bob	13	NPHCA	1372	1422	W10	D5	W3	D1	W6	4	2nd Place
3	Swed, David P	14		1298	1305	W7	L1	L2	W6	W9	3	3rd Place & PA Age 14 Co-Champion
4	Mc Cord, Alec K	14		1179	1231	L1	W6	W8	L5	W10	3	4th Place & PA Age 14 Co-Champion
5	Hickman, Michael	13	MONRB	1472	1442	W9	D2	L1	W4	L8	2½	5th Place
6	Permigiani, Ted	14	ALLDR	1017	1069	W8	L4	W7	L3	L2	2	6th Place
7	Santistevan, Mark	14	NPHCB	1026	1049	L3	W9	L6	W10	L1	2	6th Place Medal
8	Foster, John	13		1246	1209	L6	W10	L4	L9	W5	2	6th Place Medal
9	Mc Clure, Ian	13	HCKMT	1140	1115	L5	L7	D10	W8	L3	1½	
10	Devlin, Patrick J	13		1108	1049	L2	L8	D9	L7	L4	½	

**Ages 13 to 16 U1100**

#	Name	Age	Team	Pre Rat	Post Rat	Rd 1	Rd 2	Rd 3	Rd 4	Rd 5	Score	Prize
1	Wang, Justin J	15	RR	1059	1151	W3	W2	W4	W5	B-	5	1st Place Ages 15 & 16 U1100
2	Kline, Joey C	14		889	996	X-	L1	W5	W3	W4	4	1st Place Ages 13 & 14 U1000
3	Strovers, Darrell B	13	HCKMT	966	962	L1	W4	B-	L2	W5	3	2nd Place Ages 13 & 14 U1000
4	Kalchthaler, Kyle B	11		930	890	W5	L3	L1	B-	L2	2	3rd Place Ages 13 & 14 U1000
5	Webster, Liana R	14	ALLDR	844	780	L4	B-	L2	L1	L3	1	4th Place Ages 13 & 14 U1000

**Ages 11 & 12 Open**

#	Name	Age	Team	Pre Rat	Post Rat	Rd 1	Rd 2	Rd 3	Rd 4	Rd 5	Score	Prize
1	Gao, Joshua M	11		1493	1512	W10	D5	W11	W6	D2	4	1st Place & PA Age 11 Co-Champion
2	Lelis, Tyler	11		1630	1624	W13	D11	W7	W5	D1	4	2nd Place Age 11 & PA Age 11 Co-Champion
3	Joseph, Bryan G	12	MONRO	1503	1499	W18	W12	L6	W9	W7	4	2nd Place Age 12 & PA Age 12 Champion
4	Zinn, Andrew M	11	MONRO	1333	1364	W17	L7	W13	W8	W6	4	3rd Place Age 11 & PA Age 11 Co-Champion
5	Unal, Deniz Batu	12	MONRO	1186	1308	W14	D1	W15	L2	W11	3½	3rd Place Age 12
6	Cowley, Benjamin	12	HCKMT	1322	1340	W19	W9	W3	L1	L4	3	4th Place Age 12
7	Thewes, Richard P	11	NPHCA	1242	1319	W15	W4	L2	W12	L3	3	4th Place Age 11
8	Schell, Evan D	11	NPHCA	1012	1115	L11	W10	W18	L4	W16	3	5th Place Age 11
9	Berthoud, Kent	11	BOYCE	1168	1197	W20	L6	W14	L3	W12	3	6th Place Age 11
10	Evans, Micah D	12	MONRO	1152	1171	L1	L8	W19	W17	W14	3	5th Place Age 12
11	Barbara, Matthew	12	DORSE	1283	1294	W8	D2	L1	W13	L5	2½	6th Place Age 12
12	Boehner, Samuel W	12		1213	1197	W16	L3	W17	L7	L9	2	
13	Piqueira, Joseph	12	BOYCE	1124	1132	L2	W20	L4	L11	W17	2	
14	Sun, LiAnn	11	DORSE	1046	1049	L5	W18	L9	W19	L10	2	
15	Gough, Karl W	12	DORSE	1289	1235	L7	W19	L5	L16	W18	2	
16	Venkatesh, Nikhil	11	BOYCE	1009	1002	L12	L17	B-	W15	L8	2	
17	Dong, Andrew	12	DORSE	1221	1149	L4	W16	L12	L10	L13	1	
18	Rosso, Jack W	11	BOYCE	1052	1008	L3	L14	L8	W20	L15	1	
19	Tobias, David A	11		1009/18	974/23	L6	L15	L10	L14	W20	1	Good Sportsmanship
20	Manfredi, Juan J Jr	11	DORSE	937	874	L9	L13	H-	L18	L19	½	

**Ages 11 & 12 U900**

#	Name	Age	Team	Pre Rat	Post Rat	Rd 1	Rd 2	Rd 3	Rd 4	Rd 5	Score	Prize
1	Chirsan, Josh	12		825	896	W7	W5	W3	W2	L6	4	1st Place
2	Samo, Douglas	11	RR	646/16	820/21	W8	D3	W4	L1	W9	3½	2nd Place
3	Webb, Robert	10		931	921	W6	D2	L1	W5	W7	3½	3rd Place
4	Halprin, Jared M	12	MONRB	759/14	776/18	H-	W8	L2	W6	D5	3	4th Place
5	Lin, Jeffrey	11	RR	771	765	W9	L1	W7	L3	D4	2½	5th Place
6	Lewis, Timothy	11	RR	458/04	538/08	L3	B-	L8	L4	W1	2	6th Place
7	Palanisamy, Dinesh	11		622/24	611	L1	W9	L5	B-	L3	2	6th Place Medal
8	Cercone, Stephen	12		836	745	L2	L4	W6	L9	B-	2	6th Place Medal
9	Dufield, Andrew S	11		649/08	612/12	L5	L7	B-	W8	L2	2	6th Place Medal

**Ages 9 & 10 Open**

#	Name	Age	Team	Pre Rat	Post Rat	Rd 1	Rd 2	Rd 3	Rd 4	Rd 5	Score	Prize
1	Heimann, Mark A	9	NPHCA	1754	1765	W10	W5	W3	W9	W4	5	1st Place & PA Age 9 Champion
2	Heimann, Alexander	9	NPHCA	1728	1715	W15	D9	W4	D3	W6	4	2nd Place
3	Petes, Gabriel N	10		1584	1590	W12	W7	L1	D2	W9	3½	3rd Place & PA Age 10 Champion
4	Barbara, Joshua	10	HARTW	1249	1275	W11	W6	L2	W10	L1	3	4th Place
5	Stern, Scott W	9	FALK	963	990	W8	L1	L10	W14	W13	3	5th Place Age 9
6	Nimgaonkar, Vivek	9	SHADY	1109	1128	W14	L4	W11	W13	L2	3	6th Place Age 9
7	Brady, Matthew D	9	FOXCH	1152	1167	W13	L3	L9	W11	W10	3	6th Place Age 9 Medal
8	Miller, Maxwell E	9		807	863	L5	L10	B-	W12	W15	3	6th Place Age 9 Medal
9	Khan, Neiladri K	10	MONRB	1259	1289	X-	D2	W7	L1	L3	2½	5th Place Age 10 & Good Sportsmanship
10	Stutler, Jon William	10	HCKMT	947	980	L1	W8	W5	L4	L7	2	6th Place Age 10
11	Weaver, Richard P	9	NPHCA	1063	1039	L4	W15	L6	L7	W14	2	6th Place Age 10 Medal
12	Pokrifka, Brian	9	NPHCA	980/17	929/21	L3	L14	W15	L8	B-	2	6th Place Age 10 Medal
13	Todd, Andrew S	9	HARTW	857	847	L7	H-	W14	L6	L5	1½	
14	Sahota, Guneet S	10		879/08	829/13	L6	W12	L13	L5	L11	1	
15	Stern, Eric W	9	FALK	937	864	L2	L11	L12	B-	L8	1	

**Ages 9 & 10 U800**

#	Name	Age	Team	Pre Rat	Post Rat	Rd 1	Rd 2	Rd 3	Rd 4	Rd 5	Score	Prize
1	Khlystov, Nikita A	10		793	989	W11	W3	W9	W2	W4	5	1st Place
2	Busam, Sujay V	10		948	975	W10	W4	W8	L1	W3	4	2nd Place
3	Boehner, Hazel E	10		709	753	W6	L1	W11	W5	L2	3	3rd Place
4	Daye, Jeff	9	RR	Unr	834/05	W12	L2	W7	W8	L1	3	4th Place
5	Otte, Harry	9	HARTW	424	537	L9	B-	W12	L3	W8	3	5th Place
6	Covaleski, Teddy	9		695/10	687/15	L3	L11	W10	W9	D7	2½	6th Place
7	Connolly, Samantha	9	HCKMT	603/19	638/24	L8	W10	L4	W12	D6	2½	6th Place Medal
8	Gentile, Nicholas J	10		718	698	W7	W9	L2	L4	L5	2	
9	Scherch, Andrew K	10	FALK	796/18	736/23	W5	L8	L1	L6	W11	2	
10	Mackler, Joel	10		850	771	L2	L7	L6	W11	W12	2	
11	Manfredi, Sofia	9		469	481	L1	W6	L3	L10	L9	1	
12	Ramanathan, Nitya	9	SHADY	537	466	L4	X-	L5	L7	L10	1	
13	Fadzen, Colin	10				B-	F-	U-	U-	U-	1	

**Age 8**

#	Name	Age	Team	Pre Rat	Post Rat	Rd 1	Rd 2	Rd 3	Rd 4	Rd 5	Score	Prize
1	Loudon, Wesley J	8		889	1049	W5	W3	W4	W11	W2	5	1st Place & PA Age 8 Champion
2	Venkatesh, Akhil	8		831	898	W12	W7	W3	W9	L1	4	2nd Place
3	Weaver, Michael F	8	NPHCB	894	899	W8	L1	L2	W4	W10	3	3rd Place
4	Xu, Zhihong	8		916	918	W11	W6	L1	L3	W7	3	4th Place
5	Chaverin, Nathaniel	8	NPHCB	710/25	715	L1	W9	L6	W10	X-	3	5th Place
6	Rosenfeld, Elan K	8	SHADY	945	904	W10	L4	W5	L7	W11	3	6th Place
7	Samo, Michael	8	NPHCB	814/17	789/22	D9	L2	W12	W6	L4	2½	
8	Baron, Eli	8		647/22	665/25	L3	W12	W10	U-	U-	2	
9	Swegan, Jennimarie	8		Unr	404/04	D7	L5	L11	L2	B-	1½	Good Sportsmanship
10	Strovers, Gina H	8	HCKMT	622/20	580/25	L6	W11	L8	L5	L3	1	
11	Rashid-Azzam, Sherif	8	NPHCB	477/03	480/08	L4	L10	W9	L1	L6	1	
12	Sundar, Suraj	8		Unr	292/03	L2	L8	L7	B-	F-	1	

**Ages 7 & Under**

#	Name	Age	Team	Pre Rat	Post Rat	Rd 1	Rd 2	Rd 3	Rd 4	Rd 5	Score	Prize
1	Plaut, Benjamin	7		904	992	X-	W9	W6	W2	D3	4½	1st Place & PA Age 7 Champion
2	Nimgaonkar, Alok U	7	SHADY	907	953	W4	W10	W8	L1	W6	4	2nd Place
3	Stern, Benjamin W	7	FALK	661	749	W12	L8	W13	W9	D1	3½	3rd Place
4	Tobias, Peter G	7	RR	274/11	480/15	L2	B-	D9	W11	W8	3½	4th Place
5	Hong, Jocelyn	7	SHADY	741	773	L6	W14	W7	D8	W10	3½	5th Place
6	Brady, Andrew L	6	FOXCH	888	880	W5	W11	L1	W10	L2	3	6th Place & PA Age 6 Co-Champion
7	Trageser, Steven	6	HARTW	Unr	486/04	L9	W15	L5	B-	W12	3	6th Place & PA Age 6 Co-Champion
8	Feffer, Danielle N	7		900	848	W13	W3	L2	D5	L4	2½	
9	Stiles, Zane A	7		736/20	709/25	W7	L1	D4	L3	W13	2½	
10	Chaverin, Samuel	6	NPHCB	697/13	662/18	W14	L2	W11	L6	L5	2	
11	Feffer, Michael A	6		109/15	172/19	B-	L6	L10	L4	W14	2	
12	Grubbs, Christopher	6		Unr	247/04	L3	L13	B-	W15	L7	2	
13	Mackler, Daniel	6		490/07	464/12	L8	W12	L3	D14	L9	1½	
14	Smith, Jimmy	7		Unr	248/05	L10	L5	W15	D13	L11	1½	
15	Chen, Gerry	5	HARTW	Unr	100/03	F-	L7	L14	L12	B-	1	PA Age 5 Champion

**Teams**

Score	Team Code	Team Name	Team Type	Prize
16	NPHCA	North Pittsburgh Homeschool Chess I	Scholastic Organization	1st Place Scholastic Organization
15	RR	Razing Rooks	Club	1st Place Club
14½	MONRO	Monroeville Chess Club I	Club	2nd Place Club
13½	SHADY	Shady Side Academy Junior School	School	1st Place School
12	ALLDR	Allderdice High School	School	2nd Place School
12	FOXCH	Fox Chapel School District	Scholastic Organization	2nd Place Scholastic Organization
10½	HCKMT	HC Checkmates	Club	3rd Place Club
10½	NPHCB	North Pittsburgh Homeschool Chess II	Scholastic Organization	3rd Place Scholastic Organization
10½	HARTW	Hartwood Elementary School	School	3rd Place School
10	MONRB	Monroeville Chess Club II	Club	4th Place Club
9½	FALK	Falk School	School	4th Place School
8	BOYCE	Boyce Middle School	School	5th Place School
7½	DORSE	Dorseyville Middle School	School	6th Place School

**WHERE TO PLAY CHESS IN PA**

ANY CORRECTIONS/ADDITIONS/DELETIONS GRATEFULLY ACCEPTED

**ALLENTOWN:**

(1) Center City Chess Club; St. Luke's Lutheran Church, 417 N 7th St; Sat, 12:00-4:00

(2) A-B Chess Club; St. Timothy's Luth Ch, 130 S Ott St; Fri, 8-12 p.m.

**BLOOMSBURG:**

Bob Ross (W) 717-389-4337, (H) 717-784-8571

**BRADFORD:**

U P-Bradford Commons Building, Wed, 7-11 p.m.

**BRYN ATHEN:**

College of New Church CC; Pendleton Hall, Theological Lounge, Tues, 7:30, Glenn Frazier 215-572-1916

**CANONSBURG:**

Twp. Library, 610 E McMurray Rd, Mon, 6:30-8:30, 724-941-9430

**CHAMBERSBURG:**

C-burg Chessman; Thurs, 7-10 p.m., 600 Miller St, 717-263-8389

**CHELTENHAM:**

Rowland Community Center, Elm St., Thurs, 6-10 p.m.

**CLEARFIELD:**

Clearfield CC; Shaw Library, Tues and Thurs, 6-9 p.m., Sat 9-noon, Ron Williams 814-765-7788

**COATESVILLE:**

Coatesville Cultural Soc, 258 E Lincoln Hwy, Bob Jones 610-384-1790

**DUBOIS:**

Dubois CC; PSU Campus, 1st and 3rd Thurs

**ERIE:**

Erie CC; Zurn Science Building, W 7th St between. Peach and Sassafras, Room 118 Fri, 6 p.m., James Walczak 814-870-7763

**FOLSOM:**

Comic Universe CC; 446 MacDade Blvd, Tues, 7-11

**GLADWYNE:**

Main Line CC; Waverly Hts. Ret. Comm. Game Room, 1400 Waverly Rd, Tues, 7, Dan Heisman 610-649-0750

**GREENSBURG:**

Courthouse Square, Wed, 6-11, 724-836-5625

**GREENVILLE:**

Howard Miller Center, Thiel College, Mon, 7-10

**HATBORO:**

Chaturanga CC; Trinity Orthodox Pres. Chur., County Line Rd. W of Blair Mill Rd., Thurs, 8

**HARLIGH:**

Lampost Rest/Lounge, Rte 940, Fri, 7:30-11:30, 570-454-0000, contact: Bob Brubaker 570-384-4122

**HARRISBURG:**

Harrisburg East Shore Chess Club; Messiah Luth Ch, 901 N 6th St, Tues, 6-9, Sat 9-noon, 717-234-4921 or 717-236-6541 (Also see West Shore)

**HAWLEY:**

Settler's Inn Main St., Wed, 6

**HAZELTON:**

Greater Hazelton CC; Hazelton Gen. Hosp., 700 E. Broad St, Fri, 7-12

**HUNTINGDON VALLEY:**

Hunt. Valley Chess Society Juniors; Huntingdon Valley Library, 625 Red Lion Road, Tues, 7:30-8:30

**JOHNSTOWN:**

Senior Activities Ctr, 2nd Floor, Bedford and Main Sts, Tues, 7:30, 814-467-9759

**LANCASTER:**

Manor Chess Club; 3577 Blue Rock Rd, Weds, 6:30-9 p.m., 717-892-6612

**LANSDALE:**

North Penn CC; St. John's UCC Church, Main and Richardson Sts., Thurs and Fri, 7-1 a.m., 215-699-8418

**MANSFIELD:**

Wellsboro-Mansfield CC; Independence Bible Church, 33 East Ave, 1st/3rd Mon, 7-10, Don Thompson 570-376-2452

**MONROEVILLE:**

Monroeville Chess Club; Wed, 6:30-8:30, Delbert Tyler 412-824-5015

**MURRYSVILLE:**

1st Pres. Church, 3202 N Hills Rd, Wed, 7-11, Jay Griffin 724-325-2484

**NEW CASTLE:**

Lawrence County CC; Trinity Episcopal Church, N. Mill St. at Falls Ave, Thurs, 6:30-9

**NEWTOWN SQUARE:**

Marple-Newtown Scholastic CC; Robert Gauntlett Community Center, Rte 3 and Media Line Rds, Tues, 6:30-8:30

**PHILADELPHIA:**

(1) FMCC; 1420 Walnut St, Suite 460, noon-11 daily

(2) U of Penn CC; Chats Cafeteria, 3800 Locust, Wed, 8, 215-898-2399

(3) Masterminds CC; Anderson Hall, Temple University, Room 906, Mon, 6-10, Ernest Moore Jr. 215-235-1696

**PITTSBURGH:**

(1) U of Pitt CC; Lowel Level, William Pitt Union, Tues & Thurs, 7-11 p.m., Tom Martinak 412-681-7590

(2) PGH CC; Wightman School Bldg., 5604 Solway St, Wed, 1-10, Sat, 12-10:30, 412-421-1881

(3) Crafton Public Library, 140 Bradford Ave, 1st/3rd Sat, 9-noon, 412-922-4234

(4) East Lib. Library, 5920 Ralph Mull Mall, Tues, 3:30-6:30, 412-661-8412

(5) Hill Branch Library, 419 Dinwiddie St; Mon & Thurs, 4-8, Sat, 11-4:30, 412-361-6170

(6) CMU CC; University Center Commons, Thurs, 6:30-8:30 p.m.

(7) Mt Lebanon Library, 16 Castle Shannon Blvd; 1st/3rd Mon Sept-May, 412-531-1912

**RIDLEY TOWNSHIP:**

Tri-State Chess Club; Times Square Restaurant, McDade and Rte 420, Holmes, Tom Pike 610-328-5977

**ROSLYN:**

2812 Hammond Place, Steve McLaughlin 215-784-5938

**SHAMOKIN:**

Shamokin CC; Burger King, Rte 61, Mon, 7:30

**SHIPPENSBURG:**

Shippensburg CC; Outlook Pointe, 129 Walnut Bottom Rd, Fri, 7-10, Terry Campbell 717-486-0211

**SOUTHAMPTON:**

Southampton CC; Davisville Church, Sun, 7 pm, 215-675-9535

**STATE COLLEGE:**

PSU CC; A.S.I. Bldg, Room 16, Thurs, 6:30 p.m.

**STROUDSBURG:**

Stroudsburg Chess Club; YMCA, Main St., Thurs, 7-11, Eric Mark 570-476-8939 or Jim Walsh 717-992-5475

**SUNBURY:**

Susq. Val. CC; Oaklyn Baptist Ch, Rte 61, Sat, 6 p.m., 570-863-2383

**UNIONTOWN:**

K of C Hall, Old Rte 119, 724-438-9250

**WEST CHESTER:**

(1) West Chester CC; United Meth Ch., High and Barnard Sts, Wed, 7

(2) West Chester Univ. CC; Sykes Student Bldg, Rm 112, Thurs, 11-2

**WEST SHORE (Harrisburg):**

West Shore Chess Club; Cedar Cliff HS Library, Mon, 7-10, Gerald Dubs 717-975-5589

**WILKES-BARRE:**

W-B CC; Board Rm, Oster. Lib., Wed, 6-9, George Trent 570-740-7662

**WILLIAMSPORT:**

Williamsport Chess Soc.; Wertz Stud. Ctr., Lycoming College, Tues

**YORK:**

(1) York Township Community Center, 2500 S George St, Wed, 6:30-10, 717-845-9368

(2) York Youth CC; Grace Brethren Church, Newberry & Parkway, Wed, 2-5:30 or Light of Life Performance Arts Center, 41 Cherry St, Seven Valleys, Fri, 6-9:30, 717-852-8434