

en passant

Journal of The Pittsburgh Chess Club

November 2001
Vol 57 No 6

5604 Solway Street Suite 209
Pittsburgh PA 15217-1270
412-421-1881



Bill Hughes vs Don Meigs Exhibition Game

En Passant

Journal of the Pittsburgh Chess Club

Chess Journalists of America Award

Best Club Bulletin, 2000

<http://trfn.clpgh.org/orgs/pcc/>

Club Telephone: 412-421-1881

Hours: Wednesday 1 - 10 PM; Saturday Noon - 10:30 PM

Editor: Bobby Dudley, 107 Crosstree Road
Moon Township PA 15108-2607
412-262-2138 or 412-262-4079
bgdudley@compuserve.com

Interim Editor: Thomas Martinak, 320 N Neville St Apt 22
Pittsburgh PA 15213-1656
412-681-7590
martinak_tom_m@hotmail.com

Games Editor: Bruce Leverett, 759 Lebanon Avenue
Pittsburgh PA 15228-1131
412-561-3972

Material for each issue is due in the editor's hands by the 15th of the month preceeding publication. Next issue Jan 2002.

Selected back issues of *En Passant* are available for download in PDF form at the Pittsburgh Chess Club website (<http://trfn.clpgh.org/orgs/pcc/enpass.html>). In addition, at the same location, the games in this issue (and for some back issues) are available for download in PGN form.

Officers of the Pittsburgh Chess Club

President	Jerald Meyers
Vice President	Marc Jampole
Treasurer	
Secretary	Robert Milisits
Special Events	
Publications	Bobby Dudley
Maintenance	
Prison Affairs	Edward Barr
Steward	
At Large	Stephen Brady Richard Barbara Joanne Dorohovich Marc Jampole Clyde Kapinos Thomas Magar Michael Opaska James Szurek Welsh White

Tournament Clearinghouse Tom Martinak
Club Champion Ryan Milisits

Schedule of Events, Also available on-line at
<http://www.pitt.edu/~schach/ChessPA/wpatnmts.htm>

November 6 - December 11. 5th Robert P Smith Memorial. 6-SS. Pittsburgh Chess Club. 2 sections: **Championship.** TL: 30/90, SD/60. EF: \$28 postmarked by 10/29, \$38 at site, \$2 discount to PCC members. \$\$ (540 b/27): 200-100, U2000 \$90, U1800 \$80, U1600 \$70. **Booster,** open to U1600. TL: Game/60. EF: \$14 postmarked by 10/29, \$19 at

site, \$1 discount to PCC members. Trophies to 1st & 2nd, Ribbons to 3rd. **All:** Reg 6 - 6:45pm. Rds 7pm each Tuesday. **Info:** 412-681-7590. **Ent:** Tom Martinak. NS. NC. W.

November 10. Monroeville Chess Club 2001 Veterans' Day Fall Classic Chess Championship. 4-SS. Monroeville Academy, 4518 Northern Pike, Monroeville PA 15146. **EF:** \$12, if postmarked by 11/3, \$17 after, \$25 on site. **Open,** grades K-12. **TL:** G/60. Rds 8:30 - 11 - 1:30 - 3. Remaining sections: **TL:** G/30. Reg 8 - 8:30am. Rds 9:30 - 11 - 1 - 2:30. **Premier,** grades K-12, rated 950 to 1099. **Intermediate,** grades K-12, rated 850 to 949. **6 to 12 Beginner,** grades 6-12, rated 849 & Under. **Upper Elementary School Beginner,** grades 3-5, rated 849 & Under. **Lower Elementary School Beginner,** grades K-2, rated 849 & Under. **Info:** 412-824-5015. **Ent:** Delbert D. Tyler, 351 Shady Ridge Drive, Monroeville PA 15146-4586.

November 11 (QC). Pittsburgh Chess League November Quick Quads. 3-RR. G/15. Main Floor, William Pitt Union, Univ. of Pittsburgh, 5th Ave. & Bigelow Blvd., Pittsburgh PA 15260. **EF:** \$10, \$3 discount to age 18 & Under. \$\$ 20 to 1st in each quad. Reg ends 11:15am. Rds 11:30am - Noon - 12:30pm. **Info:** 412-681-7590. **Ent:** Tom Martinak. NS. W.

November 11. 42nd Annual Pittsburgh Chess League : Round 3. 30/90, SD/60. Main Floor, William Pitt Union, Univ. of Pittsburgh, 5th Ave. & Bigelow Blvd., Pittsburgh PA 15260. Rds 2pm. **Info:** 412-681-7590. NS. W. FIDE.

November 14. PCC Board of Directors Meeting. Pittsburgh Chess Club. 7pm.

December 1. 22nd Abel Bomberault Memorial. 4-SS. G/60. Dining Rooms A & B, 1st Floor, William Pitt Union, Univ. of Pittsburgh, 5th Ave. & Bigelow Blvd., Pittsburgh PA 15260. **EF:** \$14 postmarked by 11/23, \$19 at site, \$1 discount to PCC members, add \$2 to play up 1 section, add \$4 to play up 2 sections. 6 sections: **1800 & Up. 1600 to 1799. 1400 to 1599. 1200 to 1399. 1000 to 1199. 999 & Under.** Trophies to 1st & 2nd, Ribbons to 3rd in each section. Reg 9:15-9:30am. Rds 10am - 12:30pm - 3pm - 5:30pm. **Info:** 412-681-7590. **Ent:** Tom Martinak. NS. NC. W.

December 5. PCC Board of Directors Meeting. Pittsburgh Chess Club. 7pm.

December 9 (QC). Pittsburgh Chess League December Quick Quads. 3-RR. G/15. Assembly Room, Main Floor, William Pitt Union, Univ. of Pittsburgh, 5th Ave. & Bigelow Blvd., Pittsburgh PA 15260. **EF:** \$10, \$3 discount to age 18 & Under. \$\$ 20 to 1st in each quad. Reg ends 11:15am. Rds 11:30am - Noon - 12:30pm. **Info:** 412-681-7590. **Ent:** Tom Martinak. NS. W.

December 9. 42nd Annual Pittsburgh Chess League : Round 4. 30/90, SD/60. Assembly Room, Main Floor, William Pitt Union, Univ. of Pittsburgh, 5th Ave. & Bigelow Blvd., Pittsburgh PA 15260. Rds 2pm. **Info:** 412-681-7590. NS. W. FIDE.

January 5. 2002 Tri-State Junior Open Chess Championship. 4-SS. G/30. Rangos Ballroom, 2nd Floor, Univ. Center, Carnegie Mellon University, Pittsburgh PA 15213. **Info:** 412-422-1770. **Ent:** Jerry Meyers, 4101 Windsor St., Pittsburgh PA 15217-2610. NS. W.

Message from the new President *by Jerry Meyers*

Our club is poised on a threshold of change. It has to evolve and adapt as the world around it has evolved. Over the past several years, our club has experienced a steady decline in members. I do not think this is just a Pittsburgh trend. Modern life puts many demands on our limited leisure time, and the widespread availability of Internet chess has drawn many people away from chess clubs around the country.

At the same time, there has been an explosion of growth from the youth chess movement all across America, and especially here in Western PA. By my estimates, the number of children from our area who participated in some sort of organized chess activity last year, be it a class, club, or tournament, was somewhere in the range of 2500 to 3000 kids. While many of these players are beginners, at least 10 percent play regularly in rated tournaments. An increasing number of these kids are reaching the level where they can compete, and quite effectively, against adult tournament players.

Our club needs new growth if it is to thrive. One potential source of new members is the Pittsburgh Chess League. Efforts are already underway to encourage more Chess League players to join the PCC. The other large potential source of new members are the kids and families involved in the youth movement. To successfully court either of these groups requires an effort to understand their needs and wants. Our club may gain an occasional member here and there by asking people to join, but we will not retain them unless we create programs that suit their needs. In my opinion, our club currently loses a high percentage of new members for exactly this reason. Having worked with kids and their families for 9 years, I think I have a pretty good understanding of their interests. The vast majority of parents support chess for their kids because they want to stimulate their intellectual development. While some adult chessplayers may long for a new champion to rise up from the ranks, most parents are far more interested in having their children immersed in a wholesome chess environment where the kids can learn, play, and enjoy themselves without a lot of pressure about performance. If our club is going to attract and retain new members from the youth movement, it will have to create

more programming that matches these interests. At our recent elections, a large number of new families joined the club in support of these goals. One of my top priorities as President will be to create programming that gives them value for their membership dollars and a reason to stay with the club.

The Youth program has already made a tremendous contribution to the Pittsburgh Chess Club. Annual donations solicited from families have already paid for new chess sets, clocks, and the new computer at our club. A grant program which I created 7 years ago called Chess-for-Pittsburgh-Youth, is currently providing the club with several hundred dollars each year in income. Moreover, the youth program has generated a large percentage of equipment sales that have contributed to our capital improvement fund.

Let us also take time to thank the many volunteers that currently help to keep our club open and contribute to its well-being. The work of our club stewards - John Lokmer, Isak Greenberg, Jeff Schreiber, Bob Bain, and Jeff Schragin is highly appreciated. I would like to acknowledge all of you for your much appreciated service to the club. John Young is also to be thanked for all the many hours he and his wife Kelly have contributed in selling books and equipment to raise money for the club's capital improvement fund. Art Moskowitz is to be thanked for his efforts as Special Events coordinator last year. Bobby Dudley has retired as publisher of *En Passant*, but his many years of wonderful service are gratefully acknowledged. Last, but hardly least, a huge thanks goes out to Tom Martinak for directing tournaments, working on *En Passant*, assisting with mailings, and a thousand and one other tasks that have benefited the club. If there are other volunteers that I have inadvertently not named, and I am sure there are, please know you have our gratitude.

Many of us wish there were more people playing chess. We know and love the game. Unfortunately, there are barriers that make it difficult for someone who has never played in tournaments to just walk into a chess club and feel comfortable. If we had a time slot of a few hours a week where parents, grandparents, kids and other casual players could drop by and find others like themselves, our club would become an inviting place for many more people. Over time, some of these casual players would become tournament players. If we set aside a specific time, perhaps a few hours on Saturday, we might be able to find volunteers from within this group to be responsible for the program and help create a vibrant new activity at the club. It would also be nice to add activities for higher rated players, such as weekly speed chess tournaments. If one of you reading this would like to volunteer your help for these sorts of activities, or suggest others, please let me know.

Over the long run, it would be wonderful to see our club evolve into a community center that is valued not only by the chess community, but by the public at large. To become a really great club, we cannot just focus on ourselves. We need to promote the image of chess throughout the region and make more people everywhere aware of its benefits. If we all pull together, we will make our club and the world around us a better place.

January 13 (QC). Pittsburgh Chess League January Quick Quads. 3-RR. G/15. Lower Lounge, Main Floor, William Pitt Union, Univ. of Pittsburgh, 5th Ave. & Bigelow Blvd., Pittsburgh PA 15260. **EF:** \$10, \$3 discount to age 18 & Under. \$\$ 20 to 1st in each quad. Reg ends 11:15am. Rds 11:30am - Noon - 12:30pm. **Info:** 412-681-7590. **Ent:** Tom Martinak. NS. W.

January 13. 42nd Annual Pittsburgh Chess League : Round 5. 30/90, SD/60. Lower Lounge, Main Floor, William Pitt Union, Univ. of Pittsburgh, 5th Ave. & Bigelow Blvd., Pittsburgh PA 15260. Rds 2pm. **Info:** 412-681-7590. NS. W. FIDE.

January 19. Monroeville Chess Club Scholastics. 4-SS. Monroeville Academy, 4518 Northern Pike, Monroeville PA 15146. **Info:** 412-824-5015. **Ent:** Delbert D. Tyler, 351 Shady Ridge Drive, Monroeville PA 15146-4586.

Chess News for Juniors *by Beth Harrison*

Latest News: The Summer 2001 Scholastic Chess Challenge was held August 25, at Brookline Regional Catholic School. One hundred fifty-five students representing 73 schools capped off their summer with a day of chess. The home team had the biggest turnout with 9 students from Brookline Regional attending. Minadeo Elementary, Shady Side Academy Junior School, Winchester Thurston, and Pittsburgh Japanese School each had 7 students on their teams. First Place individual trophy winners in each section were Gabriel Petesch, Championship section; John Dorohovich, Premier section; Craig Quinlan, Grades 6 to 12 Advanced; Soichi Sasaki, Grades 6 to 12 Beginner; Walker Guffey, Grades K to 5 Advanced; Keegan Guffey, Grades K to 5 Intermediate; Prem Rajgopal, Grades K to 5 Advanced Beginner; and Garrett Sandridge, Grades K to 5 Beginner. In team competition the First Place Team trophy went to the Western PA Cyber School with 12 points. Winchester Thurston, North Pittsburgh Home Upper School, Pittsburgh Japanese School, and O'Hara Elementary School all tied for 2nd Place Team with 11 points each. For all the results, please see the Pittsburgh Chess Club Youth Chess web site <<http://trfn.clpgh.org/pcc/youth.htm>> or the University of Pittsburgh Chess Club web site <<http://www.pitt.edu/~schach/>>.

Junior players have also been active in adult tournaments this fall. Several junior players won top prizes in the Pittsburgh Class Championships held September 22. Justin Papariella won 1st place in the 2000 & Up division; Michael Booth was the top Class B player; and Alex Duff won the top prize in the Class D section. In the Fred A. Sorenson Memorial, Justin tied for 2nd place in the Championship section. In the Booster division Luis Guerrieri won the 1st Place trophy and Jeremiah Blocki won 2nd Place.

Top 100 Lists: The Western PA area is well represented on the October 2001 USCF Top 100 lists. Congratulations to the following players who have earned this national recognition. Ages 15 & 16 and Overall Under Age 16 - Ryan Milisits and Justin Papariella; Ages 13 & 14 - Matthew Russell; Overall Under Age 13 - Mark and Alexander Heimann; Ages 9 & 10 - Gabriel Petesch, Hari Seshadri, and Alex Zhai; Ages 8 & Under - Mark Heimann and Alexander Heimann.

PA Top 100: Check out the Top 100 lists for our state on the Pennsylvania State Chess Federation Web site <<http://www.pscfchess.org/>>.

Special Honors: Joshua Barbara was featured as a North Young Achiever in the October 7 edition of the Pittsburgh Tribune Review. Jack Cheung, Patrick Harrison, and Ezra Jampole were State Award recipients in the Johns Hopkins University Center for Talented Youth Seventh and Eighth Grade Talent Search. Matthew Russell from Bradford had the highest combined math and verbal score in the state for seventh graders in the Johns Hopkins University CTY Talent Search 2001.

Coming Attractions: GM Tal Shaked, former World Junior Champion, will be the featured speaker at the Future Champions Chess Challenge on Saturday, November 3, at Taylor Allderdice High School. Tal will give an introductory talk from 9:30 - 10 am. During the day he will show positions from some of his games and be available for autographs. The

first round of the tournament starts at 10:15 am. See the Pittsburgh Chess Club Youth Chess web site <<http://trfn.clpgh.org/pcc/youth.htm>> for more information. You do not have to be registered for the tournament in order to attend the talk by GM Shaked.

The 2001 Veteran's Day Fall Classic Chess Championships will be held Saturday, November 10, at Monroeville Academy. The Open section (G/60) rounds begin at 8:30 am; the other sections (G/30) start at 9:30 am. See the Monroeville Chess Club web site <<http://mccchess.icubed.com/index2.html>> for more information and to register online, or call Delbert Tyler, 412-824-5015.

The next series of chess classes at the Pittsburgh Chess Club begins on Nov. 4 and 5. See the PCC Youth Chess web site or call Jerry Meyers, 412-422-1770, for more information.

The 5th Annual Robert P. Smith Memorial, a six round Tuesday night tournament, begins on November 6, at the Pittsburgh Chess Club. Games in the Championship section are 30 moves in 90 minutes followed by SD/60; however, the Booster section for players rated under 1600 features a Game 60 time control. Younger students who might not be able to do the longer games on a school night might want to consider the Booster section.

Another Game 60 opportunity is the Abel Bomberault Memorial at the University of Pittsburgh's William Pitt Union on December 1. There are six sections ranging from 999 & Under to 1800 & Up. For both tournaments you can register online at <<http://www.pitt.edu/~schach/>> or call Tom Martinak at 412-681-7590.

Mark your calendars for scholastic chess in the new year.

The Tri-State Junior Open Chess Championship will be January 5, 2002, at Carnegie Mellon University, and the Monroeville Chess Club will sponsor a tournament on Saturday, January 19.

State and National Events: The 2001 National Scholastic K - 12 Grade Championships will be held December 14 - 16, 2001, in Dallas, Texas. In this tournament you play only those in your grade, and a champion is declared for each grade. Online entry and more information are available at <<http://www.uschess.org/tournaments/K12/>>. This winter, the Pennsylvania Team Tournament with open, high school, and scholastic sections will be held February 2, at St. Joseph's Prep in Philadelphia. High school team members must all attend the same school. Teams in other sections can be combinations. The Pennsylvania State Scholastic Chess Championships will be March 9 - 10, 2002, in Bloomsburg, PA. See the PSCF web site at <<http://www.pscfchess.org/clearinghouse/>> for more info about the state tournaments. Looking forward to the spring, the National High School Chess Championship will be April 11 - 14, in Louisville, KY. The National Elementary School Championship is April 25 - 28, in Portland, Oregon, and the National Junior High Championship is May 9 - 12, in Milwaukee, Wisconsin.

Send Us News: We want to hear from you! Send news about upcoming chess events, results, interesting games, or special accomplishments to Beth Harrison, 222 Cornwall Dr., Pittsburgh, PA 15238, or email beth.harrison@icubed.com. Chess News for Juniors deadline for the January issue is Dec 17.

Pat Harrison is one of our area's top scholastic players. He is one of the few scholastic players who prefers slower time controls, so he is also often seen playing (and winning) in our local open events. This game is from the SuperNationals held earlier this year in Kansas City. There were an amazing 4606 entrants in 13 sections. Pat was 6-1 in the K-8 Open section tying for 4th to 11th places. Earlier this year he tied for 1st with 4½-½ in the K-8 Open section of the Pennsylvania State Scholastic Championships K-8 Open section. Good luck to him this year as he moves up the High School sections.

Pat Harrison (1518) - Mark Wheeler (1737)

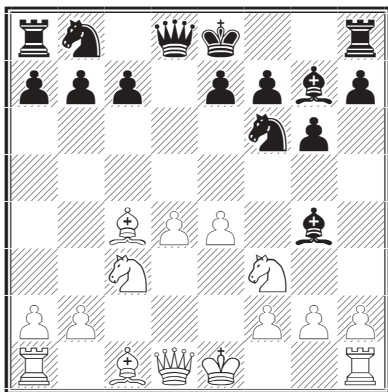
SuperNationals II, Round 7, 4/29/2001
Reti Opening, Notes by Pat Harrison

1. Nf3 d5 2. c4 Nf6

The line Black plays is not bad, but allows White to achieve a classical center.

3. cxd5 Nxd5 4. d4 g6 5. e4 Nf6 6. Nc3 Bg7 7. Bc4 Bg4

Black has been playing well up until this point. Now he makes a common opening mistake.



8. Bxf7+ Kf8

If Black plays 8. ... Kxf7, then 9. Ne5+ Ke8 10. Nxc4 regains the Bishop and White has won a pawn.

9. Bc4 Bxf3 10. gxf3 Nc6 11. Be3 Qd7 12. Qd2 Rd8 13. 0-0-0 e5

Black is trying to break up White's center. With his next move, White stops Black from doing so.

14. d5 Ne7 15. f4 exf4 16. Bxf4 Ng4 17. f3 Ne5 18. Bh6

It may look as though White has hung a Bishop, but he has actually just set up a combination to trade off Black's active Bg7 and Ne5.

18. ... Nxc4 19. Bxg7+ Kxg7 20. Qd4+ Kf7 21. Qxc4

Now that the smoke has cleared, two pieces have been traded and White is threatening d6+, winning a knight.

21. ... Ke8 22. Rhe1 Qh3

A fatal error. Letting the c7 pawn hang leaves nothing to stop White's center pawns from running down the board.

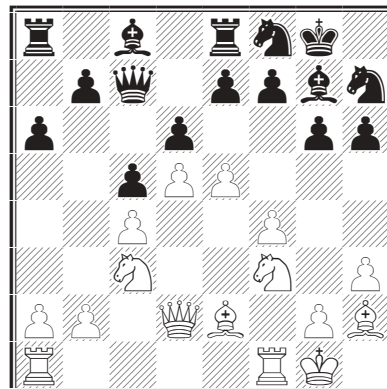
23. Qxc7 Rc8 24. Qe5 Kd7 25. d6 Qh6+ 26. Kb1 Nc6 27. Qd5 Rce8 28. Qf7+

In this position Black resigns. If he moves his King, 29. Qc7+ is checkmate. The only other way to stop the check is by moving the Rook or Knight to e7, after which 29. dxe7+ leaves White with a decisive material advantage.

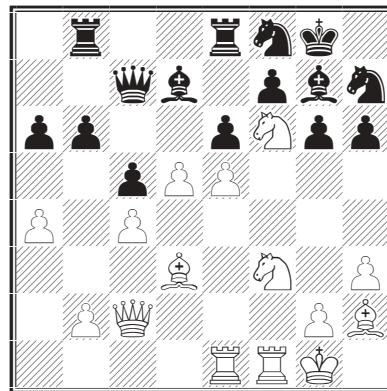
William M. Hughes - Donald J. Meigs

Exhibition Game, August 21, 2001

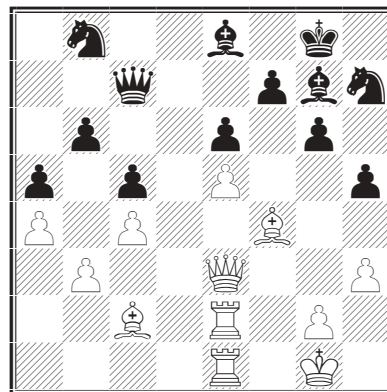
1.Nf3 g6 2.c4 Bg7 3.d4 c5 4.d5 d6 5.Nc3 Nf6 6.e4 0-0
7.Be2 Nbd7 8.0-0 a6 9.h3 Qc7 10.Bf4 Nh5 11.Bh2 h6
12.Qd2 Re8 13.Nh4 Nhf6 14.f4 Nf8 15.e5 N6h7 16.Nf3



16. ... Bd7 17.Bd3 Rab8 18.Rae1 b6 19.a4 Rb7 20.Qc2
dxe5 21.fxe5 e6 22.Ne4 Rbb8 23.Nf6+



23. ... Kh8 24.Nxe8 Bxe8 25.d6 Qd7 26.b3 a5 27.Nd2
Qd8 28.Ne4 Nd7 29.Nc3 Nhf8 30.Nb5 Kg8 31.Qd2
Nh7 32.Qe3 Ndf8 33.Nc7 Rb7 34.Bf4 h5 35.Bh6 Bh8
36.Rf2 Rxc7 37.dxc7 Qxc7 38.Bf4 Bg7 39.Bc2 Nd7
40.Rfe2 Nb8 1-0



On first glance, it would appear that this should be an easy win for White with his two exchanges. However, when you play Don, no win is easy! With careful play White should win - moving his King to safety, returning an exchange along the d-file, trading Queens, and eventually making the extra material count late in the endgame.

Endgame Lesson

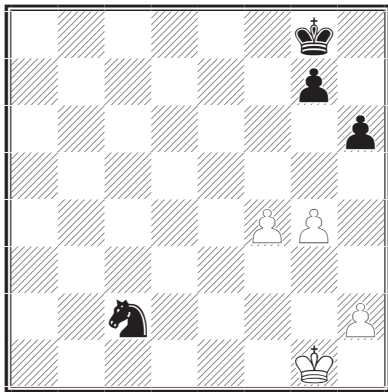
by *Bruce Leverett*

In the July issue I presented a game in which a whole extra knight wasn't enough to win. As if that weren't confusing enough, here is a game in which Black can only draw with a knight for a pawn. It is a fascinating endgame submitted by Art Moskowitz, who had Black against Brian Garbera in July's Wild Card Open.

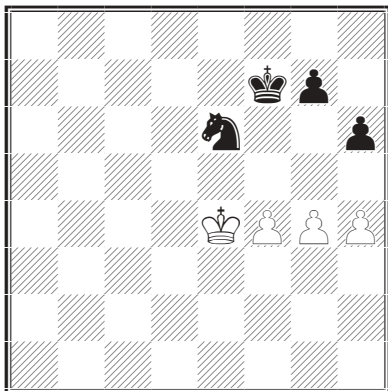
Brian S. Garbera - Arthur Moskowitz

Wild Card Open, July 31, 2001, Round 3

1 d4 Nf6 2 Nf3 d5 3 Bg5 Nbd7 4 Nbd2 c5 5 e3 e6 6 c3
 Be7 7 Bd3 0-0 8 Qe2 a6 9 a4 b6 10 0-0 Bb7 11 Ne5
 Ne5 12 de5 Ne4 13 Be7 Qe7 14 f4 f5 15 ef6 Nf6 16 Nf3
 Nd7 17 Rae1 e5 18 Ng5 e4 19 Bc2 h6 20 Nh3 Nf6 21
 b4 b5 22 ab5 ab5 23 Ra1 cb4 24 cb4 Qb4 25 Ra8 Ra8
 26 Rb1 Qc4 27 Qc4 dc4 28 Rb5 Ra1+ 29 Rb1 Rb1+ 30
 Bb1 Ng4 31 Nf2 Ne3 32 Be4 Ba6 33 g4 c3 34 Nd3 Bd3
 35 Bd3 c2 36 Bc2 Nc2



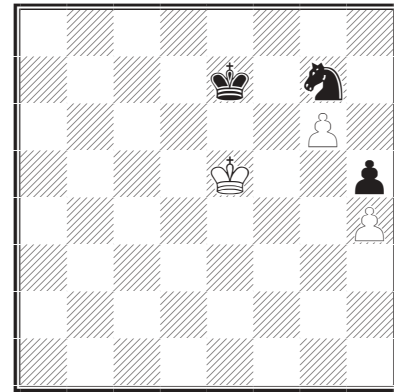
37 Kf2 Kf7 38 Kf3 Nd4+ 39 Ke4 Ne6 40 h4



White's pawn phalanx is a formidable obstacle. Black should puncture it with 40 ... h5! Then of course 41 gxh5 Kf6 just allows Black to gobble up all three of White's pawns. But even after 41 f5 Nc7 42 g5 g6! Black will eventually infiltrate. For instance, after 43 fxg6+ Kxg6 44 Ke5 Ne8 45 Kf4 Ng7 46 Kg3 Nf5+ 47 Kh3 Kg7, White is in zugzwang. 43 f6 is similar, as Black will play ... Ke6 and then maneuver the knight to f5.

40 ... g6? 41 f5 gxf5+ 42 Kxf5 Ng7+ 43 Kf4?

With 43 Ke5! White would nail down the draw. Black's best try is 43 ... Ke7, but then 44 g5! h5 45 g6! and Black can make no progress!



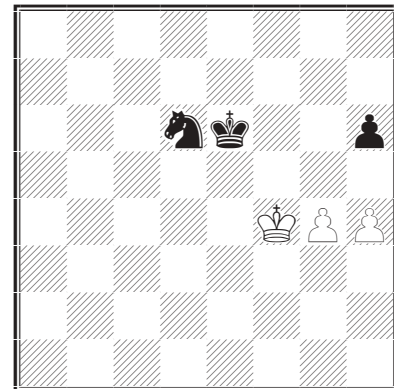
Analysis

For instance, 45 ... Ne6 46 Kf5, or 45 ... Ne8 46 Kf5 Nf6 47 Kg5, or 45 ... Ke8 46 Ke4 (but not 46 Kf6 Kf8 47 Ke5 Ke7 and Black wins) 46 ... Kd7 47 Kd5 Nf5 48 Ke5 Nxh4 49 g7 Ng6+ 50 Kf6 Ne7 51 Kg5.

43 ... Kg6?

Black returns the favor. There is an intricate win starting with 44 ... Ke6! In the following play, Black can never put his king or knight on f6 without check, because White can answer g5 forcing the exchange of pawns.

Play might continue 44 Ke4 Ne8 45 Kf4 Nd6, and now White must either push a pawn, or give ground.



Analysis

After 46 h5 Nf7 blockades and wins. 46 g5 h5 47 g6 is met by 47 ... Nf5 (but not 47 ... Kf6? 48 g7! Kxg7 49 Kg5) 48 Kg5 Ng7 49 Kh6 Kf6 50 Kh7 Nf5 51 g7 Nxg7 52 Kh6. Now Black must give up the knight to win, for instance by 52 ... Kf5; holding onto it by 52 ... Kf7 53 Kg5 Kf8? 54 Kg6 only draws!

That leaves giving ground with 46 Kf3. Black wins by 46 ... Ke5 47 Ke3 Nc4+ 48 Kf3 Nb6 49 Ke3 Nd5+ 50 Kf3 Nf4 (50 ... Kd4 also wins) 51 Kg3 Ke4 52 Kf2 Ng6 53 Kg3 Ne5, and it's clear that the pawns will soon fall.

After the text move, Black didn't get another chance.

45 Ke5 Ne8 46 Ke4 Nf6+ 47 Ke5 Ne3 48 Kf4, and a draw was agreed.

Black can set a trap by 48 ... Nd5+ 49 Ke5 Nb6, so that if 50 Ke6? Nc4 and the White king can't get back to the pawns, but 50 Ke4 leads to variations similar to what we have seen.

Dan Inghram is currently a sophomore at the University of Pittsburgh and is playing on the Pitt I team in the Pittsburgh Chess League. Thanks to Neil Brennen (editor of *Delaware Valley Chess*) for providing us with some early examples of Dan's success in the Philadelphia area. Neil recently visited Pittsburgh and the Pittsburgh Chess Club in order to do some research on chess history for future articles.

Dan Inghram (1950) - Eric Funk (1929)

NPCC April Swiss, Round 3
Sicilian Dragon, Notes by Dan Inghram

1 e4 g6 2 d4 Bg7 3 Nc3 c5

Acckkkk!! Eric has tricked me into the Sicilian!

4 Nf3 Nc6 5 Be3 cxd4 6 Nxd4 d6 7 f3 Qa5 8 Qd2 Bd7 9 Bc4 Rc8 10 Bb3 Ne5 11 0-0

I decided to play for f4 by way of h3.

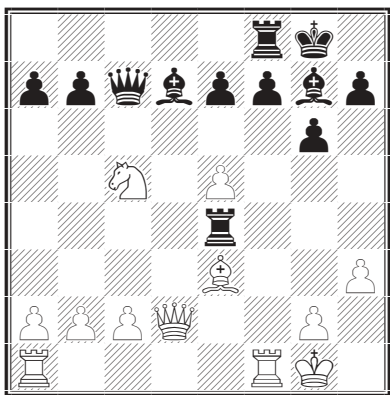
11 ... Nf6 12 h3 0-0 13 f4 Nc4 14 Bxc4 Rxc4 15 Nb3 Qc7 16 e5!?

I played this because I wanted to open the game. I figured that a pawn was worth the initiative I would get. If I hadn't done something soon, Black would have overwhelmed on the queenside with pressure via the 'deadly dragon bishop'.

16 ... dxe5 17 fxe5 Ne4

This ends up losing the exchange. Better might have been 17 ... Qxe5, as NM Joe Weber pointed out. After 18 Rae1, I think White has sufficient compensation for the pawn.

18 Nxe4 Rxe4 19 Nc5!



19 ... Bc6

If: A) 19 ... Rxe3 20 Qxe3 Bc6 21 Rae1 followed by 22 e6; B) 19 ... Rxe5 20 Nxd7! then B1) 20 ... Rd8 21 Bf4 Rxd7 22 Bxe5 and White is up a whole Rook. B2) 20 ... Rxe3 21 Nxf8.

20 Nxe4 Bxe4 21 c3 a6 22 e6 f5 23 Rad1 Qe5! 24 Bd4 Qxe6 25 Bxg7 Kxg7 26 Qd4+

I played this so that I could get the queenside pawns rolling.

26 ... Kf7 27 b3 Qc6 28 Rf2 Rc8 29 c4 Qc5

Eric now has about 10 minutes to make time control.

30 Rfd2 Qxd4 31 Rxd4 h5 32 b4 e5 33 Rd7+ Kf6 34 h4! f4 35 c5 Bc6 36 R1d6+ Kf5 37 Rf7+ Kg4?

Ke4 was better, only because Black doesn't get mated; nonetheless, if 37 ... Ke4, White has a winning endgame.

38 Rxg6+ Kxh4 39 Re7! e4?? 40 Rf7!! 1-0

There is no way out of mate.

Dan Inghram (1950) - James Larsen (1881)

West Chester Quads, Round 1, 01.05.1999
Sicilian Grand Prix, Notes by Dan Inghram

1 e4 c5 2 Nc3 Nc6 3 f4

The Grand Prix Attack. Not very difficult to play against as Black, but there are several traps for the unwary.

3 ... g6 4 Nf3 Bg7 5 Bb5 e6

"A terrible blunder" as Larsen called it afterwards.

6 Bxc6!

Black will have tons of trouble defending the dark squares.

6 ... bxc6 7 e5

White locks the dark squares up. If now 7 ... d5, after 8. exd6 Black will have weak doubled c-pawns.

7 ... f5

To keep the Knight out of e4, but Black creates additional problems for himself.

8 d3

White wants to play something like d3, b3, Na4, Be3 (or Ba3) and attack the weak pawns.

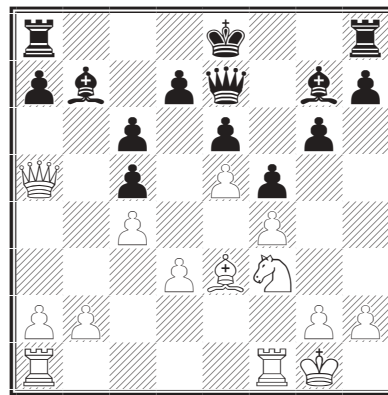
8 ... Ne7 9 0-0 Nd5 10 Na4

I waste no time.

10 ... Qe7 11 c4 Nb6 12 Be3 Nxa4 13 Qxa4

Someone has some weak pawns... But what can Black do? If 13 ... d5, everything seems to collapse after 14 exd6.

13 ... Bb7 14 Qa5



14 ... d5

The only way to hold the pawn is 14 ... Bf8, which is silly.

15 exd6 Qxd6 16 Bxc5 Qxf4 17 Rae1 Bc8 18 Ne5 Qxe5 19 Rxe5 Bxe5 20 Re1 Bf4 21 g3 Bb8

Forced, as Qc7 is devastating. Nevertheless, the next move wins for White.

22 Qc3 Rf8 23 Bxf8 Kxf8 24 Qh8+ 1-0

5th Robert P. Smith Memorial

November 6 - December 11, 2001

Reg 6 - 6:45pm on November 6

Rds 7pm each Tuesday

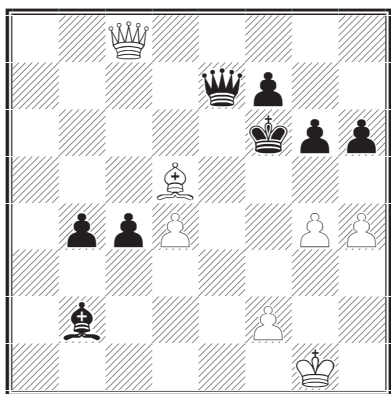
10th Wild Card Open - July 17 to August 14, 2001

Championship

#	Name	Pre Rat	Post Rat	Rd 1	Rd 2	Rd 3	Rd 4	Rd 5	Score	Prize
1	Nicholson, Rob	2011	2058	W7	W6	W2	W3	W9	5	\$79 - Flush 9 High (13)
2	Meigs, Donald J	2010	2013	W11	W13	L1	W12	D4	3½	\$71 - Straight J-7 (7)
3	Magar, Thomas P	2200	2200	W18	D4	W12	L1	W11	3½	\$55 - Three of Kind A (7)
4	Papariella, Justin J	1980	1985	W14	D3	W20	D5	D2	3½	\$63 - Straight 9-5 (9)
5	Sun, Zhipeng	1656	1708	H-	W23	W19	D4	H-	3½	\$47 - Two Pair A&Q (9)
6	Meadows, Joe B	1602	1688	W8	L1	W13	H-	D10	3	\$111 - Flush Q High (9)
7	Moskowitz, Arthur	1622	1671	L1	D18	D8	W17	W15	3	Pair T (9)
8	Garbera, Brian S	1946	1927	L6	H-	D7	W14	W16	3	Two Pair T&3 (6)
9	Booth, James R	2064	2057	H-	W16	H-	W15	L1	3	K High (6)
10	Fetahagic, Denis	1804	1805	H-	H-	D11	W18	D6	3	Two Pair A&2 (6)
11	Szurek, James E	1650	1692	L2	W14	D10	W13	L3	2½	K High (7)
12	Kirk, Daniel E	1817	1825	W22	D19	L3	L2	W18	2½	Pair K (6)
13	Prokhov, Vassil K	1830	1801	W17	L2	L6	L11	W21	2	K High (4)
14	Schuh, Russell G	1600	1611	L4	L11	W22	L8	W20	2	K High (5)
15	Kennedy, Kevin R	1703	1692	L19	W22	W17	L9	L7	2	6 High (4)
16	Nissly, Gregg J	1284	1312	B-	L9	L18	W22	L8	2	Pair 4 (5)
17	Lokmer, John M	1474	1469	L13	B-	L15	L7	W22	2	9 High (5)
18	Kapinos, Clyde E	1721	1701	L3	D7	W16	L10	L12	1½	J High (3)
19	Schreiber, Jeffrey A	2035	2017	W15	D12	L5	U-	U-	1½	Q High (3)
20	Schragin, Jeff G	1746	1730	U-	U-	L4	W21	L14	1	
21	Opaska, Michael P	1601	1583	H-	H-	U-	L20	L13	1	J High (2)
22	Berthoud, Eric A	1516	1500	L12	L15	L14	L16	L17	0	(0)
23	Mossman, Evan B	777/04	777/05	U-	L5	U-	U-	U-	0	

Booster

#	Name	Pre Rat	Post Rat	Rd 1	Rd 2	Rd 3	Rd 4	Rd 5	Score	Prize
1	Heimann, Alexander C	1432	1504	W8	W2	W9	W3	W4	5	1st Place - Full House 6&4 (13)
2	Berthoud, Kevin F	1227	1344	W3	L1	W8	W9	X-	4	Two Pair K&2 (11)
3	Guerrieri, Luis	1402	1386	L2	W5	W6	L1	W8	3	2nd Place - Three of Kind Q (7)
4	Mossman, Evan B	777/05	853/07	H-	H-	W5	H-	L1	2½	J High (5)
5	Bell, William B	787	839	L11	L3	L4	W12	W6	2	3rd Place - Two Pair A&T (6)
6	Berthoud, Kent	1056	1059	W9	L7	L3	D8	L5	1½	Pair 8 (5)
7	Lokmer, John M	1469	1473	H-	W6	U-	U-	U-	1½	
8	Reilly, Dennis M	1329	1272	L1	D9	L2	D6	L3	1	K High (2)
9	Van Sickle, Rodney J	1347	1282	L6	D8	L1	L2	H-	1	7 High (3)
10	Cummings, James S			H-	H-	U-	U-	F-	1	A High (2)
11	Nissly, Gregg J	1312	1315	W5	U-	U-	U-	U-	1	
12	Nowak, Evan S	750	723	U-	U-	U-	L5	U-	0	



In Martinak-Smiley, White played 45.Qxc4 and later lost.
What's the immediate winning move? Even masters blunder!

45.Qh8+

The Wild Card Open is one of our traditional "non-traditional" events. For this one tournament we have a very unique way of awarding prizes. For each game won, a player is awarded two playing cards. For each draw, one playing card. In addition, if he draws or wins against someone higher rated, he gets a bonus card for the upset. Prizes are then awarded based upon the best poker hand held by the players. Included under the prizes above are the poker hand and in parenthesis the total number of cards received by the player.

This system gives everyone an opportunity to win a prize without the necessity of including class prizes. And the drawing of cards in the last round can lead to great excitement. I remember several years ago when Jim Cummings, finishing the very last game of the tournament and getting the very last card, filled an inside straight flush to jump into 1st place. And for myself (Tom Martinak), I remember going 5-0 and not even finishing in the top 6 poker hands!

23rd Allegheny Chess Congress - July 13 - 15, 2001

Open

#	Name	Pre Rat	Post Rat	Rd 1	Rd 2	Rd 3	Rd 4	Rd 5	Score	Prize
1	Sevillano, Enrico	2566	2561	W4	D3	D2	W7	W6	4	\$100
2	Kriventsov, Stanislav G	2457	2460	W8	W7	D1	W6	D3	4	\$100
3	Feliachi, Nabil	2161	2184	W9	D1	W12	W11	D2	4	\$100
4	Nicholson, Rob	2027	2017	L1	W10	D8	D5	W9	3	\$62
5	Mucerino, Joseph J Jr	1912	1930	D6	L11	W10	D4	W8	3	\$62
6	Magar, Thomas P	2200	2200	D5	W12	W11	L2	L1	2½	
7	Booth, James R	2078	2082	W14	L2	H-	L1	W12	2½	
8	Holman, Timothy M	1987	1980	L2	D9	D4	W12	L5	2	
9	Booth, Michael J	1749	1755	L3	D8	D13	W10	L4	2	
10	D'onofrio, Lee C	1501	1517	H-	L4	L5	L9	W13	1½	
11	Leach, Charlie K	2118	2109	H-	W5	L6	L3	U-	1½	
12	Meigs, Donald J	2009	2000	W15	L6	L3	L8	L7	1	
13	Presto, Ernesto T	1753	1732	U-	U-	D9	U-	L10	½	
14	Duff, Alex	1238/04	1238/05	L7	U-	U-	U-	U-	0	
15	Nicholson, Rob	2027	2017	L12	U-	U-	U-	U-	0	

Premier

#	Name	Pre Rat	Post Rat	Rd 1	Rd 2	Rd 3	Rd 4	Rd 5	Score	Prize
1	Harshman, Philip E	1822	1837	H-	W10	W13	D2	W3	4	\$102
2	White, Welsh S	1731	1785	W12	W7	H-	D1	W8	4	\$102
3	Fetahagic, Denis	1769	1790	W17	W5	D11	W8	L1	3½	
4	Chernoff, Dan H	1837	1838	L7	W12	D5	W11	W9	3½	
5	Kapinos, Clyde E	1719	1721	W18	L3	D4	D6	W11	3	\$64
6	Clary, Earl Jr	1712	1703	D10	L13	W7	D5	W12	3	
7	Opaska, Michael P	1607	1617	W4	L2	L6	D10	W13	2½	
8	Blair, David A	1866	1847	H-	W19	W9	L3	L2	2½	
9	Foreman, Fred D	1700	1700	W20	D11	L8	W13	L4	2½	
10	La Bue, Thomas	1460	1480	D6	L1	H-	D7	W18	2½	\$60
11	Kirk, Daniel E	1841	1817	W21	D9	D3	L4	L5	2	
12	Holsinger, Michael K	1591	1599	L2	L4	W17	W14	L6	2	
13	Berthoud, Eric A	1509	1510	H-	W6	L1	L9	L7	1½	
14	Presto, Ernesto T	1732	1714	U-	W18	U-	L12	U-	1	
15	Comer, David J	1201	1224	U-	U-	W18	U-	U-	1	
16	Malone, William J	1433	1441	U-	U-	U-	W18	U-	1	
17	Linderman, Bruce E	1536	1515	L3	H-	L12	U-	U-	½	
18	Wilkins, Randy S	1207	1169	L5	L14	L15	L16	L10	0	
19	Guerrieri, Luis	1427	1423	U-	L8	U-	U-	U-	0	
20	Bell, William B	653	652	L9	U-	U-	U-	U-	0	
21	Kapinos, Clyde E	1719	1721	L11	U-	U-	U-	U-	0	

Reserve

#	Name	Pre Rat	Post Rat	Rd 1	Rd 2	Rd 3	Rd 4	Rd 5	Score	Prize
1	Faller, John J	1246	1333	W13	W9	W3	W6	L2	4	\$67
2	Malone, Zachary P	1437	1450	L5	W15	W9	W10	W1	4	\$67
3	Duff, Alex	1238/05	1355/09	B-	W7	L1	W12	W11	4	\$67
4	Guerrieri, Luis	1423	1458	H-	H-	W11	W5	W6	4	\$67
5	Atkociunas, Vitalijus	1118	1251	W2	L10	W7	L4	W15	3	\$20
6	Bell, William B	652	852	B-	W14	W13	L1	L4	3	\$20
7	Van Sickle, Rodney J	1391	1370	W8	L3	L5	W15	W12	3	
8	Comer, David J	1224	1223	L7	L11	B-	X-	W14	3	\$20
9	Hoppmann, William H	1012	1135	W11	L1	L2	W14	H-	2½	
10	Fitzgibbons, Kevin J	1474	1465	W15	W5	H-	L2	U-	2½	
11	Malone, William J	1441	1382	L9	W8	L4	B-	L3	2	
12	Berthoud, Kevin F	1180	1156	H-	L13	W15	L3	L7	1½	
13	Smithwick, Brian G	1367/10	1287/13	L1	W12	L6	F-	U-	1	
14	Browne, William J	1400	1400	H-	L6	H-	L9	L8	1	
15	De Happart, William R Jr	1117/16	1066/21	L10	L2	L12	L7	L5	0	

25th Pittsburgh Summer Open - August 5, 2001

1900 & Up

#	Name	Pre Rat	Post Rat	Rd 1	Rd 2	Rd 3	Rd 4	Score	Prize
1	Eidemiller, Mark B	2302	2317	W8	W3	W4	W2	4	\$125
2	Feliachi, Nabil	2200	2206	W9	W6	D5	L1	2½	
3	Riccardi, Timothy J	1828	1891	W11	L1	W7	D4	2½	\$50
4	Magar, Thomas P	2200	2200	W13	W12	L1	D3	2½	
5	Milisits, Ryan R	2055	2066	D14	W10	D2	D6	2½	\$50
6	Leverett, Bruce W	2326	2314	W7	L2	W12	D5	2½	
7	Nicholson, Rob	2017	2011	L6	W15	L3	W12	2	
8	Meigs, Donald J	2000	2010	L1	D13	W11	D10	2	
9	Papariella, Justin J	1972	1980	L2	D11	W13	H-	2	
10	Winwood, Joseph W	2120	2098	L12	L5	W16	D8	1½	
11	Booth, James R	2082	2064	L3	D9	L8	W13	1½	
12	Castillo, Gonzalo	1928	1930	W10	L4	L6	L7	1	
13	Ambrad, Antonio J	2000	2000	L4	D8	L9	L11	½	
14	Riccardi, Thomas H	1637	1651	D5	U-	U-	U-	½	
15	Clary, Earl Jr	1703	1700	U-	L7	U-	U-	0	
16	Meadows, Joe B	1604	1602	U-	U-	L10	U-	0	

1700 to 1899

#	Name	Pre Rat	Post Rat	Rd 1	Rd 2	Rd 3	Rd 4	Score	Prize
1	Caliguire, John J	1833	1855	W5	W2	W3	D4	3½	\$125
2	Fetahagic, Denis	1790	1804	W7	L1	W6	W3	3	
3	Riccardi, Thomas H	1651	1655	B-	W4	L1	L2	2	
4	Schragin, Jeff G	1752	1746	D6	L3	W7	D1	2	
5	Booth, Michael J	1755	1731	L1	D6	W9	L8	1½	
6	Abraham, Marc	1676	1671	D4	D5	L2	U-	1	
7	Clary, Earl Jr	1700	1700	L2	B-	L4	U-	1	
8	Kirk, Patrick T	1639	1659	U-	U-	U-	W5	1	
9	Guerrieri, Luis	1458	1451	U-	U-	L5	U-	0	

1500 to 1699

#	Name	Pre Rat	Post Rat	Rd 1	Rd 2	Rd 3	Rd 4	Score	Prize
1	Sun, Zhipeng	1604	1656	W5	W3	W4	D5	3½	\$125
2	Zeitler, John W	1618	1622	L3	W5	W6	H-	2½	
3	Holsinger, Michael K	1599	1598	W2	L1	L5	W4	2	
4	Opaska, Michael P	1617	1601	W9	W6	L1	L3	2	
5	Berthoud, Eric A	1510	1516	L1	L2	W3	D1	1½	
6	Fitzgibbons, Kevin J	1465	1467	W7	L4	L2	H-	1½	
7	Harrison, Patrick W	1606	1576	L6	D8	U-	U-	½	
8	Danelle, David Donald	1392	1403	U-	D7	U-	U-	½	
9	Horwitz, Dan	1297	1290	L4	U-	U-	U-	0	

1300 to 1499

#	Name	Pre Rat	Post Rat	Rd 1	Rd 2	Rd 3	Rd 4	Score	Prize
1	Schiff, Aaron J	1470	1537	W8	D5	W6	W4	3½	\$63
2	Steele, Alan J	1490/06	1579/10	W16	W14	D4	W5	3½	\$63
3	Danelle, David Donald	1403	1417	L14	B-	W15	W7	3	

4	Cheung, Jack	1484	1497	W15	W7	D2	L1	2½
5	Joseph, Bryan G	1345	1413	W11	D1	W14	L2	2½
6	Heimann, Mark A	1424	1432	D13	W12	L1	W10	2½
7	Bauer, H George	1377	1388	W10	L4	W8	L3	2
8	Parker, Bradley W	1388	1396	L1	W11	L7	W14	2
9	Lokmer, John M	1460	1474	H-	H-	U-	W15	2
10	Barry, Herbert III	1432	1400	L7	D13	W12	L6	1½
11	Guerrieri, Luis	1451	1402	L5	L8	B-	D12	1½
12	Horwitz, Dan	1290	1269	B-	L6	L10	D11	1½
13	Nissly, Gregg J	1266	1284	D6	D10	H-	H-	1½
14	Desaw, Shawn	1421	1391	W3	L2	L5	L8	1
15	Van Sickle, Rodney J	1370	1347	L4	W16	L3	L9	1
16	Browne, William J	1400	1400	L2	L15	H-	H-	½

1100 to 1299

#	Name	Pre Rat	Post Rat	Rd 1	Rd 2	Rd 3	Rd 4	Score	Prize
1	Duff, Alex	1355/09	1471/13	W6	W10	W2	W5	4	\$125
2	Letterman, Joshua C	1137/13	1270/17	W4	W3	L1	W8	3	
3	Berthoud, Kevin F	1156	1227	W7	L2	W10	W6	3	
4	Heimann, Alexander C	1261	1262	L2	W7	D5	W11	2½	
5	Thebaud, Brian G	1137/22	1147	D12	W8	D4	L1	2	
6	Goode, Leo T	1089/05	1134/09	L1	W9	W12	L3	2	
7	Horwitz, Matthew A	1032	1048	L3	L4	W13	W10	2	
8	Evans, Micah D	1108	1136	W9	L5	W11	L2	2	
9	Schiff, Robert D	1257	1204	L8	L6	H-	W12	1½	
10	Atkociunas, Vitalijus	1251	1206	W11	L1	L3	L7	1	
11	Green, Kevin R	1275	1206	L10	W12	L8	L4	1	
12	Tootikian, Jack	Unr	873/04	D5	L11	L6	L9	½	
13	Evans, Andrew R	Unr	673/01	U-	U-	L7	U-	0	

1099 & Under

#	Name	Pre Rat	Post Rat	Rd 1	Rd 2	Rd 3	Rd 4	Score	Prize
1	Schiff, Michael D	1123	1224	W10	W3	W5	W2	4	\$125
2	Smith, Jason A	981	1046	W6	W10	W7	L1	3	
3	Schreiber, Avi J	982	1023	W11	L1	W8	W5	3	
4	Joseph, Geoffrey	772	814	L5	W6	W11	D7	2½	
5	Hoppmann, William H	1041	1032	W4	W7	L1	L3	2	
6	Evans, Andrew R	673/01	732/04	L2	L4	B-	W8	2	
7	Steele, Benjamin	1012	966	W8	L5	L2	D4	1½	
8	Bell, William B	852	787	L7	W11	L3	L6	1	
9	Sun, LiAnn	759	766	U-	U-	U-	W11	1	
10	Nissly, Austin T	971	938	L1	L2	H-	H-	½	
11	Tootikian, Chelsea	Unr	371/04	L3	L8	L4	L9	0	

Searching for an *En Passant* editor

As we announced in the March 2001 issue, the club is still looking for a permanent editor for *En Passant*. I have been serving as the acting interim editor with much material and help from Bob Dudley, Bruce Leverett, Beth Harrison, Rich Barbara, Art Moskowitz and many others. Anyone interested in becoming editor should contact the PCC officers or other Board members - preferably in November or very early December. Experience with PageMaker and Chess Assistant would be useful, but *En Passant* could be prepared with any software with which you are comfortable. The next issue, January 2002, will in all likelihood be sent later than usual (near the middle of January) due to holidays, new editor, etc. - Tom Martinak

PCC Special Events

by Art Moskowitz

An Exhibition Game on August 21st between Bill Hughes and Don Meigs, with move-by-move commentary by Tom Martinak, attracted an attendance of some 20 people. The very interesting and instructive game was adjudicated a win for Bill. The incisive analysis by Tom couldn't have been better.



I'm sure that everybody who plays in open tournaments here in Pittsburgh knows Don Meigs. However, while all of our longtime members have known Bill Hughes for many decades, many of our newer members haven't met him as yet since he has been inactive for about 6 years. In looking at my database of PCC tournament results, I see that over the years Bill has won 13 events including 2 PCC Championships. These victories range from the 1970 Fred Thompson Memorial to the 1992 Masters / Experts Open. An incredibly long span of chess excellence. Bill was also a frequent competitor in the Pittsburgh Chess League, winning 2 board prizes and countless team victories while playing for the Gateway Stars (so-named because all of the team members had won the Gateway Open) and the University of Pittsburgh. Besides playing, Bill has also been a longtime volunteer for chess. He started the University of Pittsburgh CC, directed and been an officer of the Pittsburgh Chess League, and been a board member and president of the Pittsburgh Chess Club. He was instrumental in the club's move to Squirrel Hill and to its nationally-acclaimed prison chess program. Thanks for all that you have done in the past for chess. We are glad that you are back. - Tom Martinak

Don played a defense related to that in game versus Sri Rahm which appeared in the July *En Passant*. In that game he emerged poorly from the opening, but was able to create a dangerous phalanx of center pawns and win despite being down an entire piece. But Bill took full advantage of Don's cramped position, and with his patient classical play maintained control of the board. At adjudication, Bill was ahead two rooks for two knights and a pawn. Surprisingly, the locked position was still by no means an easy win, but it was agreed that sooner or later White would break through and win with the extra material.

There was much lively discussion, with LM Tom Magar and many others contributing ideas and possibilities. A subsidiary center of attention providing analysis was Fritz 6, ably operated by Jeff Schragin. After the game Don, Bill and Tom stayed on with several others discussing the game and various chess matters until after midnight.

Our thanks to Bill and Don for a fine game, and to Tom for his great commentary. This was also an auspicious return to over-the-board okay for Bill, and we hope to see more of him in tournament and league action.

[And also thanks to Art Moskowitz who has been organizing these great special events during the time that he has served on the PCC Board of Directors. We all hope that someone on the new board will volunteer to continue this task now that Art has shown how much this program enriches our club environment. - Tom Martinak]

Chess Lessons

Master **Bill Hughes** is available for either classes or private lessons for individuals.

- Analyze your games and learn from your mistakes;
- Improve your ability to evaluate positions and develop winning plans;
- Learn from a master the thinking processes used in all phases of this wonderful game, art, sport and science.

For more information, contact Bill at **412-821-9150**.