

Shippensburg Chess Club

NEWSLETTER



February 2003

Library:

Jan-2003 Morals of Chess
Jan 27th SCC Guidelines

Humor in Chess

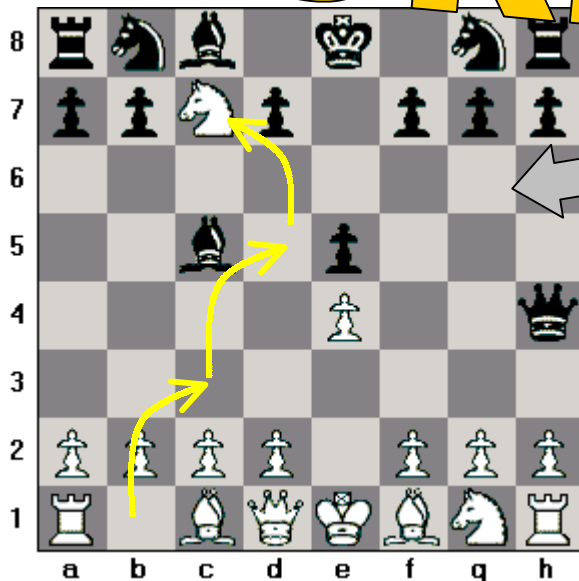
Art from Internet, words from Terry



A Chess Term



FORK



A "Fork" is when a Knight attacks two different pieces at the same time.

In this case, White's Knight has galloped to c7 and is attacking Black's Rook at a8 and King at e8.

Question: After Black moves the King out of check, should White take the Rook at a8? Yes: ____ No: ____

What is White's next best move: _____

JOKE:

What's the difference between a chess player and a highway construction worker?
 Answer: A chess player moves every now and then

QUIZ:

What is En Passant (In Passing)?

- A. When you like where all your pieces are and you say "I pass," letting the other person move again
- B. An optional Pawn move between your 5th and 7th Ranks when your opponent's Pawn passes beside you
- C. When the King and Rook pass each other during castling
- D. When you distract your opponent during the match by telling them you know the name of the person passing by your table

Club dues will start the 1st Friday in February

NOTICE