

MasterMinds Chess Club Newsletter

April 2004

Chess @ Love Park



Philadelphia's
Deputy
Managing

Director
Timothy Gill
is currently

looking for area chess

clubs to participate in chess events at Philadelphia's Love Park in center city. He has made inquiries on The Chess Drum's website and information was forwarded to me by Philadelphia's own National Master Elvin Wilson, informing me of Mr. Gill's interest. I spoke with Mr. Gill a few times and he is extremely excited about bringing chess to Love Park. He realizes that chess is often played in places like Rittenhouse Square and would like to see major chess involvement at the city's historical landmark Love Park. The MasterMinds Chess Club is aggressively looking into this opportunity and plans to network with other area clubs to bring chess, en-mass, to Love Park. The Deputy Managing Director is willing to utilize his office to enhance chess in the city and with good weather on the horizon Love Park promises to be a great way to spend a portion of a Saturday morning or afternoon playing the royal game of chess. Mr. Gill is soliciting ideas of how he can be of help to area chess clubs in making this a "Success for Chess." Your ideas are welcome.

Community Outreach

At the last MMCC board meeting we invited Oliver Green from the Beacon Program at the Strawberry Mansion High School to come and share his vision for chess involvement in his community program. Mr. Green explained that the Beacon Program

was a community-based program that offers an array of activities for youth and adults. One program for youth is an after-school tutoring program that operates from 3:30PM to 5:30PM. Immediately following this session are other activities that the youth can get involved with. Mr. Green would like to have a chess program offered for the youth. That's where the membership of the MasterMinds Chess Club comes in. Mr. Green envisions the club to offer an hour of instruction, recreational play, while at the same time mentoring this fine group of children. At that time board members Melanie Brennan, Bradley Crable, Rodney Johnson, Leteef Street, and Steve Slocum agreed to visit the Beacon program to explore how we could become a part of the vision for chess at the center. On Wednesday, March 31st, Melanie, Brad, and myself visited the Beacon program and met a really enthusiastic group of young, chess-hungry, grade-school-aged children who were genuinely interested in what we could offer them in the way of chess.

This young group of children asked some wonderful questions about us as a club, about chess history, and about the game itself. Would you believe that some even wanted to play us a game of chess on the spot? We came away from the visitation agreeing that this presents a great way to offer chess to a willing group of children, and to the surrounding community as well. Oliver Green is hopeful that we can put together a great weekly chess program. One or two days a week is all that is required. Depending on the response from the MMCC members will determine the structure and format for the chess program. The rooms are spacious with the availability of a computer room, TV monitor, and many more amenities for our use. It would

be great to show the children what Chessmaster 9000 looks like on their huge TV monitor. We agreed that we could do this with the help and assistance of the MasterMinds Chess Club members. WE NEED YOU TO MAKE THIS A SUCCESS! The format calls for at least one day a week, for (1) hour, between the hours of 5:30PM and 6:30PM. Strawberry Mansion High School is located at 30th & Ridge Ave. All interested members who would like to contribute time, talent, skills, instruction, mentorship, and fun should contact any of the board members for your involvement in the Beacon program.

Again, this is a great opportunity for us to give back to the community. We cannot do this without your involvement. Please let us know of your availability and thoughts on the issue. You can contact Melanie Brennan, Bradley Crable, or myself to obtain more information, or inquire on Monday night at Temple University. Thanks for your consideration on this matter.

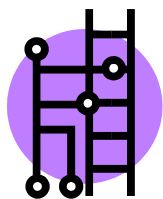
All the best for chess!!
Steve Slocum
Vice President
MasterMinds Chess Club

MMCC on Fritz 8

Our industrious web developer Bradley Crable has arranged for the members of the MasterMinds Chess Club or any other interested chess competitor to play chess in "real-time" on the Fritz 8 computer program. You must first have a Fritz 8 chess program on your computer. It works like this. Fritz 8 has an online server called "Playchess" and it is part of the chess program itself. All you have to do is establish an online connection,

open the Fritz 8 program on your computer, and open up the "Playchess" portion. Once you're logged in you can click on "Clubs & Federations," then click on the country (USA), and then *MasterMinds Chess Club*. There you can proceed to "Meeting Place," or "Tournaments." There you may find other MasterMind Chess Club members already playing or waiting for action. The graphics are great. You can set the game clock to what time suits you and play as you watch your opponent make moves in "real-time." The program saves all of your games. You can even have the program analyze your games once you're finished and print them out for further study. It's a great way to play in the comfort of your home when you can't get an *over-the-board* game at your local club. It's also a great way to stay in touch with the members of the club. We can host our own tournaments on this server as well. It can be a "Quad" or "Round-Robin" event.

Fritz is the preferred program of the great chess GM's, Masters, Experts, and novices alike. It's the program the great Gary Kasparov played against on a recent televised event on ESPN. Take advantage of this great opportunity. The Fritz 8 program can be purchased at the Wholesale Chess website for the low price of \$37.95. If you access the Wholesale Chess website through the link on the MasterMinds CC website the club earns points towards discounted purchases for club usage (like purchasing game clocks and tournament equipment). Consider taking advantage of this opportunity to grow a little chess community in *our own* little meeting place on the web.



The Concept of Ladder

Tournaments

The primary goal of the ladder is regular and easy-to-get competition on club night (Mondays at Temple University) of a somewhat serious nature. It's plenty of fun and we expect to start the club's ladder tournament very soon. We have done in the past but have gotten away from it. It's relatively simple. In addition to playing your usual chess battles on Monday night your games will simply be registered into the Ladder. The club has some very strong players and all inspire to become better. It is said in chess that you become better as you challenge opponents considered stronger than yourself.

In most ladder systems, players don't have to come to every meeting because the ladder is always there. You can tell you're improving when you see yourself move up the ladder. The basic rule is that lower players challenge higher ones in attempting to move up the ladder. The rules are designed so that each challenge creates a reasonable contest. One possible use of the ladder is to determine the team for interclub matches (both local and to other cities), but keep in mind all players are welcomed to participate in inter-club play as there are differing playing levels. It is also a fun and competitive way to participate on club nights and prepare for tournament play.

Rules. A player moves up the ladder by defeating players whom he or she challenges. **Challenges.** A player may challenge a player who is only one or two rungs higher on the ladder. If neither of these two players is available nor willing to play, then the next higher player may be challenged (and so forth). All challenges must be made in sequence up the ladder. Player 14 can't challenge player 11 unless he or she has challenged players 13 and 12, and has either been refused or that person was unavailable. **Movement.** If the

challenger loses or draws, there is no movement. If the challenger wins, the challenger assumes the rung of the person he or she defeated, while the loser and those immediately between the two players are moved down one rung.

Example:

Player	Rung
Manny	11
Moe	12
Jack	13
Julie	14

Julie challenged Jack and Moe, but neither would play, so Julie challenged Manny. Julie defeated Manny, and the ladder changed as follows:

Player	Rung
Julie	11
Manny	12
Moe	13
Jack	14

TD Corner by Bradley Crable

When first asked to write the TD Corner I had no idea what to attempt. After pondering it for a day I thought about a topic discussed several times during our club meetings, more specifically to review the rules on castling moving the rook first. I will not review all the rules on castling for this article, but will touch on the main ideas.

Lets start with the definition of castling as described in the **U.S. Chess Federation's Official Rules of Chess** 5th Edition. Rule 8A2 on page 13:

Castling. Castling is a move of the king and either rook, counting as a single move and executed as follows: the king is transferred from its original square two squares toward either rook on the same rank;

then, that rook is transferred over the king on the same rank. **See also** 8C1, Castling; 9C, Castling; 10I1, King touched first, or king and rook simultaneously; and 10I2, Rook touched first.

Since, the touch move rule was mentioned and as anyone who plays chess has heard “touch a man move that man”, let’s look at the touch-move rule. The next important rule 10B on page 21:

Touch-move rule. Except for 10A, a player on move who deliberately touches one or more pieces, in a manner that may reasonably be interpreted as the beginning of a move, must move or capture the first piece touched that can be moved or captured. See also 10E, Accidental touch of piece; 10F, appearance of adjustment; and 35F3 (the touch-move rule for blind and disabled players).

The last rule here is 10I2 on page 23:

Rook touched first. If a player intending to castle touches the rook first, there is no penalty except if castling is illegal, the player must move the rook if legal.

Clearly, the USCF allows castling moving the rook first as an exception to the Rule 8A2. Which states that the king be moved first. This ruling by the USCF may seem arbitrary but by the rules is permissible. One really hopes on the integrity of the person across the board from you if the happen to castle by handling the rook first.

I suppose the questioning really comes to play depending on the position each time it occurs, and if your opponent has a great poker face. Do you asked yourself; did they really mean that? For those who feel taken

advantage of by the rules it will be the question for the ages.

If there are any interested members who would like to learn how to become a tournament director or would like to learn how to run a tournament please feel free to contact Bradley Crable or Leteef Street for further information about TD workshops. At the workshop you will learn how to construct cross tables by hand, operate Swiss-System software; learn the official rules of chess and much, much, more.

Message from the Secretary

By Melanie Brennan

Spread the Word:

We have begun to develop an email list of people interested in our monthly tournaments. This is our newest outreach to the chess community in Philadelphia. In addition, we have visited several other groups in the city to spread the word about our tournaments!

Also, be sure to check your I.D. to ensure that it is updated. Cards will be made available to all with an adjustment that will reflect membership date (month/year), instead of expiration date. The month listed will be your renewal month. Be sure to pay your yearly dues on time. Payments can be made to Treasurer Rodney Johnson or myself.

Committees to Consider

By Steve Slocum

Members...the board members of the MasterMinds CC has met and agreed to begin some very important projects for our club. We have identified and established a few vital committees that we would like to bring to your attention. It is our hope that you will find this an opportunity to lend a helping hand. One committee involves finding a host facility for our

regular club night. We are looking to find a facility that will allow us to come together at least a few days/nights per week. We are also looking for space to comfortably accommodate our growing number of club members. Our present arrangement at Temple University is presenting some challenges in regard to available space. The members of this committee will be canvassing the Philadelphia area by phoning, visiting, talking with area libraries, recreation center, senior centers, YM/WCA's and the like to explore possibilities for our club. This committee's point person is Steve Slocum.

Dr. Russell Floyd is the point person for the Youth Outreach Committee. This particular committee is primarily looking into ways of involving youth in chess and serves as fact-finding committee to find ways of instituting a summer chess program, an adopt-a-school initiative, and youth recruitment into the MasterMinds Chess Club.

A committee for obtaining information on establishing a non-profit organization status is also encouraged. This fact-finding committee's purpose is to explore the legality of non-profit organizations and how to apply it to our club's framework.

Other areas of interest that MMCC club members can involve themselves in include the Newsletter, Tournament Director's workshops, Public Relations, Equipment Manager, Assistant Treasurer, and Assistant Secretary. All interested members should contact club secretary Melanie Brennan.

The Mind of the Master

In this and subsequent issues Philadelphia's own National Master Elvin Wilson is featured in “The Mind of the Master.” Elvin has agreed to answer any questions that we might

have as it relates to the game of chess. Let's take advantage of this rare opportunity by forwarding your questions to newsletter developer Steve Slocum at Jslocum2u@aol.com. Elvin Wilson has a wealth of knowledge and wisdom that he is willing to share with us.

This is a feature of the newsletter that we are privileged and excited about. National Master Elvin Wilson has agreed to lend his insights and expertise to the inquiring minds that wish to know the game a little better from many different aspects.

Master Profile (Compliments of TheChessDrum)

Philadelphia is the home to one of the world's most accomplished players of African descent. When one looks at the chess résumé of **Elvin Wilson**, it's an endless string of successes stemming from his days as a scholastic standout until his current reign as the Philadelphia champion. Elvin made master at age 18 and played on legendary scholastic teams at Washington High School and was highly touted as a chess prodigy. Learning chess at Cooke Junior High (1983-1986), Elvin states that this beginning has definitely paid dividends in all areas of his life. Elvin explains, "After Junior High School I continued my chess career at George Washington High School (1986-1989), one of the best chess programs in the country at the time. After High School, I enlisted into the Air Force (1990-2000) where I have traveled and competed all over the World. I am currently a Computer Information Science (CIS) major at Temple University." Despite an impressive chess résumé, Elvin isn't done yet. The down-to-earth chess titan hopes to achieve his quest of earning the International Master title. Best wishes Elvin!! Here are excerpts from previous issues.

Let the questions begin.

J.B. Frazier asks: What is was the most difficult to master, the opening, the middle, or the end game?

EW. All of the above! If I had to pick one I would have to say the middle game because of the sheer number of possible positions. It is no accident that most games are decided in the middlegame.

Steve Slocum asks: Who are some of your favorite chess players and why?

EW. Lasker, because of his fighting spirit and philosophical views of chess and life.

Fischer, because of his fighting spirit and his genius.

Kasparov, because of his fighting spirit and his work ethic.

Tal, because of his fighting spirit and his fearlessness.

Jean Borgella asks: How to keep an advantage in a winning game: Is more concentration needed or what? What kind of exercises should I have to do?

EW. Concentration is key: the old axiom "50 good moves may not be enough to win a game, but one bad one is enough to lose one" is very true. The only we to improve is to play more tournament chess. You can also exercise your concentration while studying books or analyzing games (analyze without moving the pieces help a lot). Consistent effort will bring improvement.

A Heritage Event! An American Classic! U.S. Championship Qualifier

Jul. 1-5, 3-5, Jun. 29-Jul. 5 or Jun. 26-Jul. 5 **32nd Annual World Open**
GPP: 200 Pennsylvania

9SS, 40/2, SD/1 (3-day option, rds. 1-5 G/45), **Adam's Mark Hotel, City Line Ave (Rt 1 at I-76 City Ave exit), Philadelphia 19131. World's biggest open tournament- \$180,000 guaranteed prize fund.** Free analysis of your games by GM Sam Palatnik; free lectures by other GMs 7/2 10am, 7/3 10am, 7/4 9am. Unrated must enter Open or Unrated sections. In 8 sections. Open: \$14000-7000-3500-2000-1000-800-700-600-500-400, 11th-20th each \$300, clear winner bonus \$500, 2300-2449/unr \$3000-1500, U2300 \$3000-1500. If tie for first, top 2 on tiebreak play speed game 7/6 11:30 pm (white 7 minutes, black 5 minutes & gets draw odds) for title & bonus prize. GM & IM norms possible in all schedules except 3-day. FIDE rated. Top 4 eligible players and top 2 eligible women not already qualified qualify for 2004 US Championship; optional qualifier fee \$75. Under 2200, Under 2000, Under 1800, Under 1600: each \$10000-5000-2500-1200-800-600-500-400-400-400, 11th-20th each \$300. Under 1400: \$ 6000-3000-2000-1200-800-600-500-400-400-400, 11th-20th each \$300. Under 1200: \$4000-2000-1000-800-700-600-500-400-400-400, 11th-20th each \$300, top Under 1000 \$1400-700. Under 1000s play for both U1000 & U1200 prizes; receive larger if winning both. If 1400/over established on any list after 12/99, prize limit in U1200 Section is \$500. Unrated: \$1000-700-500-400-300-200-200-100-100-100; players without US Social Security ID may not win over \$400. 1 year ICC membership to top U2300, U2100, U1900, U1700, U1500, U1300, 1000-1099, 900-999, 800-899, U800. Prize limits: If 6/04 list rating based on under 10 games, limit \$2000 in U1200, \$3000 in U1400 through U2200. If 6/04 list rating based on 11-25 games, limit \$5000 in U1400 through U2200. Games rated too late for 6/04 list not counted. Balance of prize goes to next player(s) in line. EF, if mailed by 2/16: 7-day \$227, 5-day \$225, 3-day \$223, 2-weekend \$222. Mailed by 5/14: 7-day \$247, 5-day \$245, 3-day \$243, 2-

weekend \$242. Mailed by 6/18: 7-day \$257, 5-day \$255, 3-day \$253, 2-weekend \$252. At site: All \$280; no checks, credit cards OK. Online entry at chesstour.com: EF \$221 by 2/16, \$241 by 5/14, \$251 by 6/23, \$280 after 6/23 until 2 hours before rd 1. Phone entry at 406-896-2038: \$230 by 2/16, \$250 by 5/14, \$260 by 6/23 (entry only, no questions). No phone entries after 6/23. GMs free; \$200 EF deducted from prize. Unrated Section (5-day or 3-day only): EF 5-day \$45, 3-day \$43 if mailed by 6/18, all \$42 online at chesstour.com by 6/23, \$50 by phone at 406-896-2038 by 6/23 (entry only, no questions), \$60 at site. EF discounts: \$30 less to rated juniors under 18 & rated seniors over 65. Advance EF \$10 less if paid with \$49 adult USCF dues. \$20 fee for switching section or schedule after 6/30. Re-entry: \$120, any section but Open, any schedule, byes OK, no discounts. 5-day schedule: 7/1 7 pm, 7/2-3 12 & 7, 7/4 11 & 6, 7/5 10 & 5. 7-day schedule: 6/29-7/3 7 pm, 7/4 11 & 6, 7/5 10 & 5. 3-day schedule: 7/3 12, 2:30, 4:30, 7, 9:30, 7/4 11 & 6; 7/5 10 & 5. 2-weekend schedule: 6/26 12 & 6:30; 6/27 10 & 4:30; 7/3 7 pm, 7/4 11 & 6, 7/5 10 & 5. All schedules merge & compete for same prizes. 1/2-pt byes OK all, limit 4. Rds 5-9 byes: limit 2; must commit before rd 4. All: Entries, re-entries close 90 min. before your first game. Bring sets, boards, clocks if possible- none supplied. HR: \$87-87-87 at Adam's Mark, 215-581-5000, & Holiday Inn next door, 215-477-0200. Adams Mark usually sells out in late May; reserve by 6/12 at Holiday Inn or rates increase to \$97/rm. Special fares: see chesstour.com. Special car rental rates: Avis, 800-331-1600, AWD #D657633, or reserve car online through chesstour.com. Foreign player ratings: 100 pts added to FIDE, 100 to FQE, 200 or more to most foreign, no pts added to CFC. Highest of multiple ratings used.

Players who fail to disclose foreign or FIDE ratings may be expelled. US player ratings: June list used (usually same as July label); FIDE ratings not used. Ent: Continental Chess, Box 249, Salisbury Mills, NY 12577. 845-496-9658, www.chesstour.com. Invitation requests: go@chess.us. You may request "lowest possible section" if June rating unknown. Advance entries will be posted at chesstour.com 6/25.

July 4 World Open Quick Championship GPP: 15 Pennsylvania

5SS, G/10, Adams Mark Hotel, Philadelphia (see World Open for location, rates). \$\$G 2400. In 3 sections: Open: \$400-200-100, top U2400/Unr \$220, top U2200 \$200. Under 2000: \$300-150-80, top U1600 \$160, no unrated may win over \$200. Under 1600: \$200-100-50, top U1400 \$140, top U1200 \$100, no unrated may win over \$100. EF: \$40 (at site only), no checks. Reg: 7-10pm, rounds 10:15-11-11:45-12:15-12:45. Bye: 1. Quick-rated (will not affect regular ratings), but regular USCF ratings used for pairings & prizes.

July 5 World Open Blitz Championship GPP: 15 Pennsylvania

5SS, (10 games, 2 vs. each opponent), G/5, Adams Mark Hotel, Philadelphia (see World Open). \$\$G 2200. In 2 sections: Open: \$400-200-100, top U2400/Unr \$210, top U2200 \$200, top U2000 \$190. Under 1800: \$300-150-80, top U1600 \$160, top U1400 \$130, top U1200 \$80, no unrated may win over \$150. EF: \$40 (at site only), no checks. Reg: 6-11pm,

rounds 11:15-12-12:30-1-1:30. Bye: 1. Quick-rated (will not affect regular ratings), but regular USCF ratings used for pairings & prizes.

June 26 Rated Beginners Open

4SS, G/30, Adams Mark Hotel, Philadelphia (see World Open). Open to under 1000/Unr. 4 points wins 3 yrs USCF membership, 3.5 pts 2 yrs, 3 pts 1 yr. EF: (at site only, no chks): \$20, under 18 \$10. Reg: ends 12:30pm, rds 1-2:15-3:30-4:45. Bye: 1.

June 26 World Open Saturday – Wednesday, June 30 Hex

3SS, G/90, Adams Mark Hotel, Philadelphia (see World Open). 6-player sections in order of rating, EF: \$20 (at site only, no checks). \$\$50-30 each section. Reg: ends 9:30am, rounds 10-1:30-5.

*“You Have to Play to
Win”*

MasterMinds CC March Open Section Results

	Name/Rtng/ID	Rd 1	Rd 2	Rd 3	Rd 4
1	Leteef Street	B 6	W 3	B 9	W 5
	1679 12567673	1.0	2.0	3.0	4.0
2	Charles Edward Georgia	W 7	B 9	W 5	W 6
	1637 12464832	1.0	1.0	1.0	1.0
3	Levy C Nealy	B 8	B 1	W 10	W 7
	1571 12778238	1.0	1.0	1.0	2.0
4	Frederick Austin	W 9	B 5	B 6	W 8
	1400 12533371	0.0	0.0	0.0	0.0
5	Richard P Henry	B 10	W 4	B 2	B 1
	1369 12842126	1.0	2.0	3.0	3.0
6	Patrick K Schoener	W 1	B 8	W 4	B 2
	1133 12790919	0.0	1.0	2.0	3.0
7	Melanie Brennan	B 2	W 10	W 8	B 3
	839 12872241	0.0	0.0	1.0	1.0
8	Paul J Walsh	W 3	W 6	B 7	B 4
	762 12913248	0.0	0.0	0.0	1.0
9	Michael Douglas	B 4	W 2	W 1	B 10
	unr. New	1.0	2.0	2.0	3.0
10	Marvin W Jones	W 5	B 7	B 3	W 9
	unr. New	0.0	1.0	2.0	2.0

MasterMinds CC March Scholastic Open Results

#	Name	Rd 1	Rd 2	Rd 3	Rd 4	Rd 5	Tot
1	Jack Jiang	W29	W13	W8	W3	W2	5.0
2	David A Lakata	W17	W21	W6	W5	L1	4.0
3	David Reilly	W27	W28	W4	L1	W13	4.0
4	Daniel Slesinski	W23	W19	L3	W8	W12	4.0
5	Joseph M Kovacs	W25	W22	W9	L2	W10	4.0
6	Shelley Lian	W31	W20	L2	W15	W11	4.0
7	Odette Moolten	L8	W23	D13	W22	W19	3.5
8	Matthew W Slesinski	W7	W10	L1	L4	W20	3.0
9	Leon L Watson	W11	W14	L5	L12	W23	3.0
10	Praneeth Denduluri	W12	L8	W19	W14	L5	3.0
11	Kathryn E Walsh	L9	W26	W17	W16	L6	3.0
12	Ryan Eppley	L10	W24	W28	W9	L4	3.0
13	Blake S Rosenn	W26	L1	D7	W20	L3	2.5
14	Chad Gabaly	W16	L9	W29	L10	D15	2.5
15	Chelsea R Richard	L19	W25	W18	L6	D14	2.5
16	Jamaal Burnam	L14	W27	W21	L11	D18	2.5
17	Jared Patton	L2	W31	L11	D21	W27	2.5
18	Isaiah Ferguson	L20	W30	L15	W29	D16	2.5
19	Julia Douglass	W15	L4	L10	W25	L7	2.0
20	Leighton Z Muse	W18	L6	W22	L13	L8	2.0
21	Raven Wake	W30	L2	L16	D17	D24	2.0
22	Andrew Campbell	W24	L5	L20	L7	W28	2.0
23	Maurice A Scott	L4	L7	W30	W28	L9	2.0
24	Joshua Pilchik	L22	L12	W26	D27	D21	2.0
25	Matthew Patton	L5	L15	B---	L19	W30	2.0
26	Stephen A Thomson	L13	L11	L24	B---	W29	2.0
27	Jesse J Adelman	L3	L16	W31	D24	L17	1.5
28	Ethan J Foster	B---	L3	L12	L23	L22	1.0
29	Morgan K Mc Millian	L1	B---	L14	L18	L26	1.0
30	Meghan Schoener	L21	L18	L23	W31	L25	1.0
31	Maragarita E Caraballo	L6	L17	L27	L30	B---	1.0

Mission Statement

The MasterMinds Chess Club is designed to provide a meaningful and viable service to the

community. In particular it is our intent to promote chess within the inner-city community and to

provide a learning environment where the game can be played, taught, studied, and enjoyed. Ultimately, we see chess as a tool for self-development, development of our community and as a bridge to other communities as well. We, the members of the MasterMinds Chess Club are dedicated to promoting good moral conduct, mutual respect, and stand committed to the development of the total human being through heart felt support and genuine concern. It is also our intent to travel to other cities in an effort to promote a healthy network of area clubs as well as with clubs across the nation.

We intend on preparing for and participating in tournament competition and encourage membership in the United States Chess Federation. We encourage the membership of school age chess players to grow academically, maintain their discipline and focus on educational pursuits with the understanding that academic excellence has priority over actual chess endeavors. Furthermore, by playing the royal game of chess and pursuing its many disciplines, we hope to instill in some and nurture in others an appreciation for the game while at the same time benefit from its growth.

Code of Ethics

1. To maintain good moral conduct conducive to the club's standards.
2. To promote mutual respect and concern for others.

3. To refrain from the use of profane language, but to encourage wholesome communication that uplift, support, edify, and instruct others.
4. To always demonstrate good sportsmanship.
5. Never to demean and belittle others but only offer constructive criticism.
6. Always play the game of chess according to the rules, which govern the game.
7. Support those who are participating or preparing for tournament competition.
8. Be an active member by presenting your ideas and/or participating on committees to accomplish goals and objectives.
9. Continue to develop your passion for the game through continuous practice, play and study.
10. To realize and remember that every member is of vital importance to the collective whole.

Club Nights

We meet each Monday from 6 – 9pm at Temple University's Anderson hall, 9th floor. Enter from 11th or 12th street between Norris & Berks Streets.

In a structured format we provide a place to play, study, and analyze the

game of chess. NM Elvin Wilson provides informative instruction where his schedule permits. Learn to record games through algebraic & descriptive notation. Come and learn opening principles, middlegame strategies & tactics, as well as the endgame phase of play.

We also encourage tournament participation and membership with the United States Chess Federation. We also network with local area clubs and plan to travel to other cities to network, play, and learn. It is also our focus to give back to the national community as well by providing the opportunity to enhance one's intellectual, social, and moral character. We offer you the opportunity to serve.



Membership is \$20 yearly for adults....\$10 yearly for seniors & children under 18.



If you would like to be a contributing writer for the MasterMinds CC newsletter please contact Steve Slocum at Jslocum2u@aol.com I would like to include a feature in future newsletters called "Queens Gambit," a feature inviting women chess players to share their thoughts and stories of interest. Your articles are welcome.

Newsletter by Steve Slocum

