

The Pittsburgh Chess League



**Spring 2002
Issue 2 Volume 7
Team Chess at its Best**

Pittsburgh Chess League

<http://www.pitt.edu/~schach/ChessPA/ChessLeague/wpapcl.htm>

2001-02 PCL Officers

President	Thomas P Magar 1120 Jacks Run Road North Versailles PA 15137-2726 412-823-4493 thomasmagar@hotmail.com
Treasurer	Robert A Milisits 6382 Morrowfield Avenue Pittsburgh PA 15217-2505 412-421-7225 chess4youth@hotmail.com
Secretary	K Lawrence Kemp 953 5th Avenue New Kensington PA 15068-6307 800-675-1826 klkemp@westol.com
Vice President	Earl Clary Jr 835 Lindsay Road Carnegie PA 15106-3821 412-276-7948
Editor	Edward W Barr 1430 Mohican Drive Pittsburgh PA 15228-1614 412-563-6391 ewb@adelphia.net
Match Director	Tom M Martinak 320 North Neville Street Apt 22 Pittsburgh PA 15213-1656 412-681-7590 martinak_tom_m@hotmail.com

Schedule of Events, Also available on-line at

<http://www.pitt.edu/~schach/ChessPA/wpapnmts.htm>

March 12 (Lecture). Chess Presentation by Life Master Tom Magar & Don Meigs. Pittsburgh Chess Club, 5604 Solway St. Suite 209, Pittsburgh PA 15217-1270. From 7pm to 9pm. Tom will present several of his games and Don will give tips & stories from his long experience in Pittsburgh-area chess. **EF:** Free for members of the Pittsburgh Chess Club or Affiliate Clubs, \$2 for non-members. **Info:** 412-421-1881. NS. W. *Sponsored & Organized by the Pittsburgh Chess Club.*

March 14 - 28. Blue & Gold March Quads. 3-RR. G/120. Dining Room A, 1st Floor, William Pitt Union, Univ. of Pittsburgh, 5th Ave. & Bigelow Blvd., Pittsburgh PA 15260. **EF:** \$10. \$\$ 20 to 1st in each quad. Reg ends 6:45pm. Rds 7pm each Thursday. **Info:** 412-681-7590. **Ent:** Tom Martinak, 320 N. Neville St. Apt 22, Pittsburgh PA 15213-1656. Checks payable to University of Pittsburgh CC. NS. W. *Sponsored & Organized by the University of Pittsburgh Chess Club.*

March 17 (QC). Pittsburgh Chess League March Quick Quads. 3-RR. G/15. Assembly Room, Main Floor, William Pitt Union, Univ. of Pittsburgh, 5th Ave. & Bigelow Blvd.,

Pittsburgh PA 15260. **EF:** \$10, \$3 discount to age 18 & Under. \$\$ 20 to 1st in each quad. Reg ends 11:15am. Rds 11:30am - Noon - 12:30pm. **Info:** 412-681-7590. **Ent:** Tom Martinak, 320 N. Neville St. Apt 22, Pittsburgh PA 15213-1656. Checks payable to Pittsburgh Chess League. NS. W. *Sponsored by the University of Pittsburgh Chess Club & Organized by the Pittsburgh Chess League.*

March 17. 42nd Annual Pittsburgh Chess League : Round 7. 30/90, SD/60. Assembly Room, Main Floor, William Pitt Union, Univ. of Pittsburgh, 5th Ave. & Bigelow Blvd., Pittsburgh PA 15260. Rds 2pm. **Info:** 412-681-7590. NS. W. FIDE. *Sponsored by the University of Pittsburgh Chess Club & Organized by the Pittsburgh Chess League.*

March 19 - April 23. 3rd William M Byland Memorial. 6-SS. Pittsburgh Chess Club, 5604 Solway St. Suite 209, Pittsburgh PA 15217-1270. 2 sections: **Championship. TL:** 30/90, SD/60. **EF:** \$29 postmarked by 3/11, \$39 at site, \$3 discount to PCC members. \$\$ (540 b/27): 200-100, U2000 \$90, U1800 \$80, U1600 \$70. **Booster**, open to U1600. **TL:** Game/60. **EF:** \$15 postmarked by 3/11, \$20 at site, \$2 discount to PCC members. Trophies to 1st & 2nd, Ribbons to 3rd. **All:** Reg 6 - 6:45pm. Rds 7pm each Tuesday. **Info:** 412-421-1881. **Ent:** Pittsburgh Chess Club, 5604 Solway St. Suite 209, Pittsburgh PA 15217-1270. Checks payable to Pittsburgh CC. NS. NC. W. *Sponsored & Organized by the Pittsburgh Chess Club.*

March 23 (QC). 19th Steel City Tornado. 6-SS. G/29. Dining Rooms A & B, 1st Floor, William Pitt Union, Univ. of Pittsburgh, 5th Ave. & Bigelow Blvd., Pittsburgh PA 15260. **EF:** \$14 postmarked by 3/15, \$19 at site, add \$2 to play up 1 section, add \$4 to play up 2 sections. 6 sections: **1800 & Up. 1600 to 1799. 1400 to 1599. 1200 to 1399. 1000 to 1199. 999 & Under.** Trophies to 1st & 2nd, Ribbons to 3rd in each section. Reg 11:15-11:30am. Rds Noon - 1:15pm - 2:30pm - 3:45pm - 5:15pm - 6:30pm. **Info:** 412-681-7590. **Ent:** Tom Martinak, 320 N. Neville St. Apt 22, Pittsburgh PA 15213-1656. Checks payable to University of Pittsburgh CC. NS. NC. W. *Sponsored & Organized by the University of Pittsburgh Chess Club.*

April 11 (QC). Blue & Gold April Quick Quads. 3-RR. G/15. Dining Room A, 1st Floor, William Pitt Union, Univ. of Pittsburgh, 5th Ave. & Bigelow Blvd., Pittsburgh PA 15260. **EF:** \$10. \$\$ 20 to 1st in each quad. Reg ends 6:45pm. Rds 7pm - 7:45pm - 8:30pm. **Info:** 412-681-7590. **Ent:** Tom Martinak, 320 N. Neville St. Apt 22, Pittsburgh PA 15213-1656. Checks payable to University of Pittsburgh CC. NS. W. *Sponsored & Organized by the University of Pittsburgh Chess Club.*

April 14 (QC). Pittsburgh Chess League April Quick Quads. 3-RR. G/15. Assembly Room, Main Floor, William Pitt Union, Univ. of Pittsburgh, 5th Ave. & Bigelow Blvd., Pittsburgh PA 15260. **EF:** \$10, \$3 discount to age 18 & Under. \$\$ 20 to 1st in each quad. **Morning:** Reg. ends 11:15am. 11:30am - Noon - 12:30pm. **Afternoon:** Reg ends 1:15pm. Rds 1:30pm - 2pm - 2:30pm. **Info:** 412-681-7590. **Ent:** Tom Martinak, 320 N. Neville St. Apt 22, Pittsburgh PA 15213-1656. Checks payable to Pittsburgh Chess League. NS. W. *Sponsored by the University of Pittsburgh Chess Club & Organized by the Pittsburgh Chess League.*

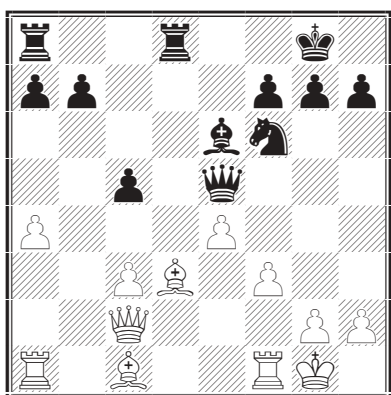
PCL Council Annual Meeting - March 17

The PCL Council is composed of the officers and team captains. It will meet prior to the PCL round on March 17 from 1:15 pm to 2 pm. A few of the topics which are currently planned for this meeting include:

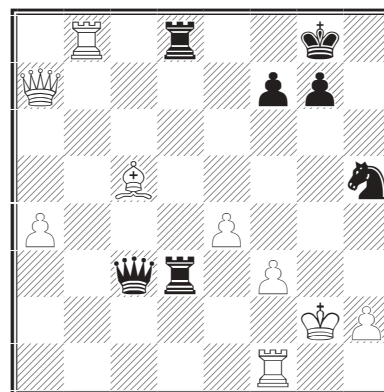
- a. Election of officers for the 2002-03 PCL. We are always looking for people willing to be officers.
- b. Summary of finances.

White: Bruce W. Leverett (Double Trouble I)
Black: GM Alexander Shabalov (Prudential Rocks)
 Pittsburgh Chess League, round 6, February 20, 2000

1 d4 Nf6 2 c4 e6 3 Nc3 Bb4 4 e3 c5 5 Bd3 O-O 6 Nf3
 d5 7 O-O Nc6 8 a3 Bxc3 9 bxc3 Qc7 10 Qc2 dxc4 11
 Bxc4 e5 12 Bd3 Rd8 13 Nxe5 Nxe5 14 dxe5 Qxe5 15
 f3 Bd7 16 a4 Be6 17 e4



17 ... Bb3 18 Qxb3 Rxd3 19 Qxb7 Rad8 20 Rb1 h5 21
 Qxa7 h4 22 Ba3 Qxc3 23 Bxc5 h3 24 Rb8 hxg2 25
 Kxg2 Nh5



26 Rxd8+ Rxd8 27 Be3 Rd3 28 Bg5 Qe5 29 Bc1 Rc3
 30 Be3 f5 31 Rc1 Ra3 32 Qc5 Qxc5 33 Bxc5 Rxa4 34
 Bd6 1/2-1/2

April 14. 42nd Annual Pittsburgh Chess League : Round 8. 30/90, SD/60. Assembly Room, Main Floor, William Pitt Union, Univ. of Pittsburgh, 5th Ave. & Bigelow Blvd., Pittsburgh PA 15260. Rds 2pm. Division IV only. **Info:** 412-681-7590. NS. W. *Sponsored by the University of Pittsburgh Chess Club & Organized by the Pittsburgh Chess League.*

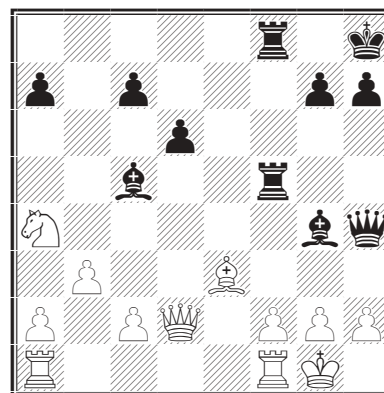
A Heritage Event

April 19 - 21 or 20 & 21 GPP:6 Pennsylvania
42nd Golden Triangle Open. 5-SS. 30/80, SD/1 (2-day option, rd 1 G/90). Dining Rooms A & B, 1st Floor, William Pitt Union, Univ. of Pittsburgh, 5th Ave. & Bigelow Blvd., Pittsburgh PA 15260. \$\$ (1605 b/65, two-thirds guaranteed). 3 sections: **Open**, open to all: \$\$ 300-150, U2100 \$95, U2000 \$90. **Premier**, open to U1900: \$\$ 200-100, U1700 \$95, U1600 \$90. **Reserve**, open to U1500: \$\$ 200-100, U1300 \$95, U1200 \$90. Unrateds may not win over \$100 in U1900, or \$75 in U1500. **EF:** 3-day \$35, 2-day \$34 postmarked by 4/11, all \$44 at site. **Re-entry:** \$15. **3-day schedule:** Reg ends Fri 6:30pm, Rds Fri 7pm, Sat 1:30pm - 6:30pm, Sun 10am - 3pm. **2-day schedule:** Reg ends Sat 9:30am, 1st Round 10am, then merges with 3-day. **Bye:** 1-5, rds 4 & 5 must commit before rd 2. **Info:** 412-681-7590. **Ent:** Tom Martinak, 320 N. Neville St. Apt 22, Pittsburgh PA 15213-1656. Checks payable to University of Pittsburgh CC. NS. NC. W. FIDE. *Sponsored & Organized by the University of Pittsburgh Chess Club.*

White: Kirk W. Mc Mullan (Phalanx I)
Black: Tom M. Martinak (Pitt I)

Pittsburgh Chess League, round 4, December 13, 1998

1.e4 e5 2.Nf3 Nc6 3.Bb5 f5 4.d3 Nf6 5.ef5 Bc5 6.0-0 d6
 7.d4 ed4 8.Nd4 0-0 9.Nc6 bc6 10.Bc6 Rb8 11.Nc3 Bf5
 12.b3 Ng4 13.Bf3 Qh4 14.Bg4 Bg4 15.Qd5+ Kh8
 16.Be3 Rf5 17.Qd2 Rbf8 18.Na4



18. ... Bf3 19.gf3 Rh5 20.Rfe1 Qh2+ 21.Kf1 Qh1+
 22.Ke2 Qf3+ 23.Kd3 Rd5+ 24.Kc3 Qf6+ 25.Kc4 Rd2
 26.Bd2 0-1

1st 2001-2002 PCL Quick Quads - October 21, 2001

Quad 1

#	Name	Pre Rat	Post Rat	Rd 1	Rd 2	Rd 3	Score	Prize
1	Milisits, Ryan R	2014	2031	W2	W4	W3	3	\$20
2	Magar, Thomas P	2116	2109	L1	W3	W4	2	
3	Borden, Edwin L	1828/25	1822	W4	L2	L1	1	
4	Fetahagic, Denis	1602	1591	L3	L1	L2	0	

Quad 2

#	Name	Pre Rat	Post Rat	Rd 1	Rd 2	Rd 3	Score	Prize
1	Papariella, Justin J	1561	1662	W4	W3	W2	3	\$20
2	Foreman, Fred D	1680	1691	W3	W4	L1	2	
3	Nicholson, Rob	1748	1724	L2	L1	W4	1	
4	Jones, Lawrence P	1607	1572	L1	L2	L3	0	

Quad 3

#	Name	Pre Rat	Post Rat	Rd 1	Rd 2	Rd 3	Score	Prize
1	Surma, Jeffrey F	1222	1282	W3	W4	D2	2½	\$20
2	Green, Kevin R	1121	1148	W4	L3	D1	1½	
3	Wong, John Jr	1122	1124	L1	W2	L4	1	
4	Barry, Herbert III	1391	1342	L2	L1	W3	1	

2nd 2001-2002 PCL Quick Quads - November 11, 2001

Quad 1

#	Name	Pre Rat	Post Rat	Rd 1	Rd 2	Rd 3	Score	Prize
1	Magar, Thomas P	2109	2118	W2	W3	W4	3	\$20
2	Milisits, Ryan R	2031	2028	L1	W4	W3	2	
3	Fetahagic, Denis	1591	1608	W4	L1	L2	1	
4	Klein, Charles W Jr	1725	1701	L3	L2	L1	0	

Quad 2

#	Name	Pre Rat	Post Rat	Rd 1	Rd 2	Rd 3	Score	Prize
1	Papariella, Justin J	1662	1711	W3	W2	W4	3	\$20
2	Baker, Joseph Michael	1640	1652	W4	L1	W3	2	
3	Jones, Lawrence P	1572	1550	L1	D4	L2	½	
4	Clary, Earl Jr	1612	1600	L2	D3	L1	½	

Quad 3

#	Name	Pre Rat	Post Rat	Rd 1	Rd 2	Rd 3	Score	Prize
1	Barbara, Matthew	1126/16	1196/19	W3	W4	L2	2	\$20
2	Barry, Herbert III	1342	1319	L4	D3	W1	1½	
3	Surma, Jeffrey F	1282	1270	L1	D2	W4	1½	
4	Wong, John Jr	1137	1138	W2	L1	L3	1	

Quad 4

#	Name	Pre Rat	Post Rat	Rd 1	Rd 2	Rd 3	Score	Prize
1	Niedelman, Avi	Unr	1517/03	W3	W4	W2	3	\$20
2	Green, Kevin R	1148	1122	W4	L3	L1	1	
3	Barbara, Richard P	1026	1023	L1	W2	L4	1	
4	Mossman, Evan B	896/10	929/13	L2	L1	W3	1	

3rd 2001-2002 PCL Quick Quads - December 9, 2001

Quad 1

#	Name	Pre Rat	Post Rat	Rd 1	Rd 2	Rd 3	Score	Prize
1	Milisits, Ryan R	2028	2043	W4	W2	W3	3	\$20
2	Magar, Thomas P	2118	2111	W3	L1	W4	2	
3	Foreman, Fred D	1691	1699	L2	W4	L1	1	
4	Klein, Charles W Jr	1701	1681	L1	L3	L2	0	

Quad 2

#	Name	Pre Rat	Post Rat	Rd 1	Rd 2	Rd 3	Score	Prize
1	Papariella, Justin J	1711	1745	W2	W4	W3	3	\$20
2	Fetahagic, Denis	1608	1626	L1	W3	W4	2	
3	Clary, Earl Jr	1600	1600	W4	L2	L1	1	
4	Baker, Joseph Michael	1600	1561	L3	L1	L2	0	

Quad 3

#	Name	Pre Rat	Post Rat	Rd 1	Rd 2	Rd 3	Score	Prize
1	Young, Jason	1541	1561	W2	D3	W4	2½	\$20
2	Guerrieri, Luis F	1198/19	1319/22	L1	W4	W3	2	
3	Booth, Michael J	1572	1541	D4	D1	L2	1	
4	Young, Shih Houng	1502	1464	D3	L2	L1	½	

Swiss

#	Name	Pre Rat	Post Rat	Rd 1	Rd 2	Rd 3	Score	Prize
1	Niedelman, Avi	1517/03	1423/06	W4	L3	W2	2	\$8
2	Barbara, Richard P	1023	1112	W3	W5	L1	2	\$8
3	Lelis, Tyler	1227/10	1249/13	L2	W1	W6	2	\$8
4	Barbara, Matthew	1196/19	1208/22	L1	W6	W5	2	\$8
5	Mossman, Evan B	929/13	943/16	W6	L2	L4	1	
6	Green, Kevin R	1122	1055	L5	L4	L3	0	

4th 2001-2002 PCL Quick Quads - January 13, 2002

Quad 1

#	Name	Pre Rat	Post Rat	Rd 1	Rd 2	Rd 3	Score	Prize
1	Milisits, Ryan R	2043	2046	W3	D2	W4	2½	\$10
2	Papariella, Justin J	1745	1800	W4	D1	W3	2½	\$10
3	Meigs, Donald J	1974	1955	L1	W4	L2	1	
4	Sher, Mikhail	1649/23	1632	L2	L3	L1	0	

Quad 2

#	Name	Pre Rat	Post Rat	Rd 1	Rd 2	Rd 3	Score	Prize
1	Fetahagic, Denis	1626	1661	W4	W3	W2	3	\$20
2	Clary, Earl Jr	1600	1600	W3	L4	L1	1	
3	Jones, Lawrence P	1550	1530	L2	L1	W4	1	
4	Surma, Jeffrey F	1270	1298	L1	W2	L3	1	

Swiss

#	Name	Pre Rat	Post Rat	Rd 1	Rd 2	Rd 3	Score	Prize
1	Niedelman, Avi	1423/06	1431/09	W3	D2	W4	2½	\$15
2	Lelis, Tyler	1249/13	1294/16	W6	D1	W5	2½	\$15
3	Schreiber, Avi J	1143/24	1178	L1	W4	W6	2	
4	Green, Kevin R	1055	1051	W5	L3	L1	1	
5	Mossman, Evan B	943/16	954/19	L4	W6	L2	1	
6	Wong, John Jr	1138	1070	L2	L5	L3	0	

42nd Annual Pittsburgh Chess League (2001-2002) Division IV Preliminary Swiss

#	Team Name	Rating	Sep 10	Oct 8	Nov 5	Dec 10	Jan 21	Match:Game
1	Phalanx VII	1327	W 2	B 4	W 7	B 3	W 9	4½:16½
			W:3½	W:4	D:2	W:3	W:4	
2	Phalanx V	1368	B 1	W 6	B 5	B 7	W 4	4:11½
			L:½	W:2½	W:3	W:3	W:2½	
3	Monroeville Chess Club IV	1210	B 12	W 9	B 10	W 1	W 7	3½:11
			W:3	D:2	W:2½	L:1	W:2½	
4	Phalanx VI	1280	B 6	W 1	B 12	W 9	B 2	3:12
			W:3	L:0	W:4	W:3½	L:1½	
5	Monroeville Chess Club V	1204	W 7	B 11	W 2	B 8	W 10	3:12
			L:½	W:3½	L:1	W:4	W:3	
6	Monroeville Chess Club III	1203	W 4	B 2	W 11	W 10	B 12	2½:12½
			L:1	L:1½	W:4	D:2	W:4	
7	Hill Carnegie IV	1454	B 5	W 10	B 1	W 2	B 3	2½:11
			W:3½	W:3	D:2	L:1	L:1½	
8	Monroeville Chess Club II	1231	B 10	W 12	B 9	W 5	B 11	2:8½
			L:1	W:3	L:1	L:0	W:3½	
9	Pitt IV	1352	W 11	B 3	W 8	B 4	B 1	2:7½
			D:2	D:2	W:3	L:½	L:0	
10	Weenies	1363	W 8	B 7	W 3	B 6	B 5	1½:8½
			W:3	L:1	L:1½	D:2	L:1	
11	Triple Threat III	1311	B 9	W 5	B 6	W 12	W 8	1:5
			L:1	L:½	L:0	W:3	L:½	
12	Hill Carnegie III	1275	W 3	B 8	W 4	B 11	W 6	0:3
			L:1	L:1	L:0	L:1	L:0	

Pennsylvania State Chess Federation (PSCF)

For those interested in chess activity beyond Pittsburgh, you can find a great deal of information at the PSCF website <http://www.pscfchess.org/>, including a schedule of the various Pennsylvania State Championship events and a listing of chess clubs active throughout the state. There are also lists of top rated Pennsylvania players updated with each new USCF Rating Supplement, including many of our players in the Pittsburgh Chess League.

Annual dues are currently only \$5. The PSCF is the official state affiliate to the United States Chess Federation (USCF). It publishes the quarterly newsletter *The PennsWoodPusher* including crosstables, columns, book reviews, articles, and games. It also occasionally publishes additional tournament booklets. It sponsors a variety of state championships. The State Championship is traditionally held in late summer alternating between eastern, central, and western sites. The State Scholastic and Quick Chess Championships are traditionally held in March in Bloomsburg. The State Action Chess Championship is traditionally held in late February in Philadelphia. The State Team Championship is traditionally held in late January in Philadelphia. The Annual Postal Championship begins each February. The PSCF is a 501 C(3) non-profit corporation, and donations are tax-deductible. The PSCF is committed to helping scholastic chess as much as possible, and also to running FIDE Futurities in order to enable players to get FIDE ratings. The PSCF will also help tournament directors advance in certification by offering volunteers chances to be assistant directors as often as possible. For more information, contact the PSCF president: Dr. Ira Lee Riddle, 400 Newtown Road, Warminster PA 18974-5208, 215-674-9049 or 215-674-8892 Iralee@aol.com.