

The Pittsburgh Chess League



Fall 2001

Issue 1 Volume 7

Team Chess at its Best

Pittsburgh Chess League

<http://www.pitt.edu/~schach/ChessPA/ChessLeague/wpapcl.htm>

2001-02 PCL Officers

| | |
|----------------|---|
| President | Thomas P Magar 1120 Jacks Run Road North Versailles PA 15137-2726 412-823-4493 |
| Treasurer | Robert A Milisits 6382 Morrowfield Avenue Pittsburgh PA 15217-2505 412-421-7225 chess4youth@hotmail.com |
| Secretary | K Lawrence Kemp 953 5th Avenue New Kensington PA 15068-6307 800-675-1826 klkemp@westol.com |
| Vice President | Earl Clary Jr 835 Lindsay Road Carnegie PA 15106-3821 412-276-7948 |
| Editor | Edward W Barr 1430 Mohican Drive Pittsburgh PA 15228-1614 412-563-6391 ewb@adelphia.net |
| Match Director | Tom M Martinak 320 North Neville Street Apt 22 Pittsburgh PA 15213-1656 412-681-7590 martinak_tom_m@hotmail.com |

Schedule of Events, Also available on-line at
<http://www.pitt.edu/~schach/ChessPA/wpatnmts.htm>

A Heritage Event

September 16. 42nd Annual Pittsburgh Chess League : Round 1. 30/90, SD/60. Assembly Room, Main Floor, William Pitt Union, Univ. of Pittsburgh, 5th Ave. & Bigelow Blvd., Pittsburgh PA 15260. 4 players + alternates per team. 4 divisions, by team average ratings: **Divisions I, II & III** : 7-RR, September - March. **Divisions IV** : 5-SS, September - January, followed by 3-RR sections by standings, February - April. **Reg:** Thursday 9/13, 7pm - 8pm & Sunday 9/10, 11am - Noon. Rds 2pm - 9/16, 10/21, 11/11, 12/9, 1/??, 2/??, 3/??, 4/?? **EF:** \$50 received by 9/13, \$60 at site, Escrow deposit of \$50 also required, refundable if 2 or fewer forfeits. **Info:** 412-681-7590. **Ent:** Tom Martinak, 320 N. Neville St. Apt 22, Pittsburgh PA 15213-1656. NS. W. FIDE.

October 21 (QC). Pittsburgh Chess League October Quick Quads. 3-RR. G/15. Assembly Room, Main Floor, William Pitt Union, Univ. of Pittsburgh, 5th Ave. & Bigelow Blvd., Pittsburgh PA 15260. **EF:** \$10, \$3 discount to age 18 & Under. \$\$ 20 to 1st in each quad. Reg ends 11:15am. Rds 11:30am - Noon - 12:30pm. **Info:** 412-681-7590. **Ent:** Tom Martinak, 320 N. Neville St. Apt 22, Pittsburgh PA 15213-1656. NS. W.

October 21. 42nd Annual Pittsburgh Chess League : Round 2. 30/90, SD/60. Assembly Room, Main Floor, William Pitt Union, Univ. of Pittsburgh, 5th Ave. & Bigelow Blvd., Pittsburgh PA 15260. Rds 2pm. **Info:** 412-681-7590. NS. W. FIDE.

November 11 (QC). Pittsburgh Chess League November Quick Quads. 3-RR. G/15. Ballroom, Main Floor, William Pitt Union, Univ. of Pittsburgh, 5th Ave. & Bigelow Blvd., Pittsburgh PA 15260. **EF:** \$10, \$3 discount to age 18 & Under. \$\$ 20 to 1st in each quad. Reg ends 11:15am. Rds 11:30am - Noon - 12:30pm. **Info:** 412-681-7590. **Ent:** Tom Martinak, 320 N. Neville St. Apt 22, Pittsburgh PA 15213-1656. NS. W.

November 11. 42nd Annual Pittsburgh Chess League : Round 3. 30/90, SD/60. Ballroom, Main Floor, William Pitt Union, Univ. of Pittsburgh, 5th Ave. & Bigelow Blvd., Pittsburgh PA 15260. Rds 2pm. **Info:** 412-681-7590. NS. W. FIDE.

December 9 (QC). Pittsburgh Chess League December Quick Quads. 3-RR. G/15. Assembly Room, Main Floor, William Pitt Union, Univ. of Pittsburgh, 5th Ave. & Bigelow Blvd., Pittsburgh PA 15260. **EF:** \$10, \$3 discount to age 18 & Under. \$\$ 20 to 1st in each quad. Reg ends 11:15am. Rds 11:30am - Noon - 12:30pm. **Info:** 412-681-7590. **Ent:** Tom Martinak, 320 N. Neville St. Apt 22, Pittsburgh PA 15213-1656. NS. W.

December 9. 42nd Annual Pittsburgh Chess League : Round 4. 30/90, SD/60. Assembly Room, Main Floor, William Pitt Union, Univ. of Pittsburgh, 5th Ave. & Bigelow Blvd., Pittsburgh PA 15260. Rds 2pm. **Info:** 412-681-7590. NS. W. FIDE.

January to April Pittsburgh Chess League dates will be finalized by the November 11th Round.

The new PCL season is rapidly approaching. We will be sending out organizational flyers to team captains in early August. That mailing will include last year's roster with the official August ratings for all of your returning players. Then, we will be having our organizational meeting to turn in new rosters on Thursday September 13 in the Concourse Dining Area of the William Pitt Union at the University of Pittsburgh.

For most teams, that means individual players should be getting in contact with their team captains sometime this August. And in particular, it is always helpful for captains to know both who is interested in playing again this fall and who may be playing for a different team.

Other upcoming events:

August 4. The MCC John Cauley Memorial Chess Championships. **Info:** 412-824-5015. **Ent:** Delbert D. Tyler, 351 Shady Ridge Drive, Monroeville PA 15146-4586.

August 5. 25th Pittsburgh Summer Open. **Info:** 412-681-7590. **Ent:** Tom Martinak, 320 N. Neville St. Apt 22, Pittsburgh PA 15213-1656.

August 25. 2001 Summer Scholastic Chess Challenge. **Info:** 412-422-1770. **Ent:** Jerry Meyers, 4101 Windsor St., Pittsburgh PA 15217-2610.

White: FM Stanislav G. Kriventsov (Phalanx I)

Black: Bruce Leverett (Triple Threat I)

Pittsburgh Chess League, round 7, March 18, 2001

French Defense, Classical Variation

Notes by Bruce Leverett

My game with the same opponent from last summer's state championship was unpublishable--agreed drawn right out of the opening. The present game was no masterpiece, but there was plenty to think about.

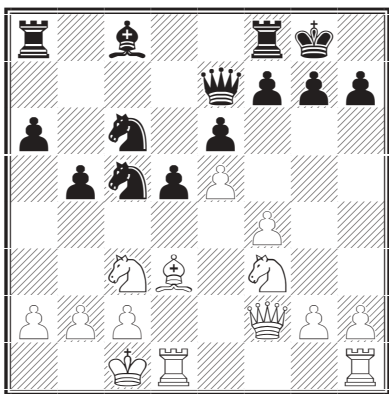
1 e4 e6

I also play 1 ... e5, but after a debacle against Justin Papariella a few months before, I realized that it is risky to play open games when you only play 6-7 rated games a year. 1 ... e6 is easier to play both strategically and tactically than 1 ... e5, but is more limiting. If you've seen one locked French Defense pawn chain, you've seen them all.

2 d4 d5 3 Nc3 Nf6 4 Bg5 Be7 5 e5 Nfd7 6 Bxe7 Qxe7 7 f4 O-O 8 Nf3 c5 9 dxc5 Nc6 10 Qd2

The main alternative is 10 Bd3 f6 11 exf6 Qxf6 12 g3 Nxc5 13 O-O.

10 ... Nxc5 11 O-O-O a6 12 Bd3 b5 13 Qf2



White now threatens 14 Bxh7+ Kxh7 15 Ng5+ Kg6 (15 ... Kg8 16 Qh4) 16 Qh4 or 16 Qg3. 13 Qe3 is more accurate, making the same threat but avoiding some pins on the f-file.

13 ... f5 14 exf6 Nxd3+?

I had my heart set on recapturing on f6 with the Queen, so I had to play this zwischenzug. But it is premature and removes a key attacking and defending piece from the queenside. 14 ... Rxf6 is necessary.

15 Rxd3 Qxf6 16 g3 Bd7 17 Re1 Rac8 18 Kb1 Be8 19 a3 Bg6 20 Rd2 Bf5 21 Nd4?

21 Qb6 is the logical way to take advantage of Black's error on the 14th move. During the game and the post-mortem, we both thought that this was too adventurous. Indeed after 21 ... Rfd8 22 Qxa6? b4 Black would get plenty of counterplay. But 22 Ne2 followed by 23 Nfd4 seems to put White firmly in control. After the text move Black can breathe easier.

21 ... Nxd4 22 Qxd4 Qxd4 23 Rxd4 Rc5

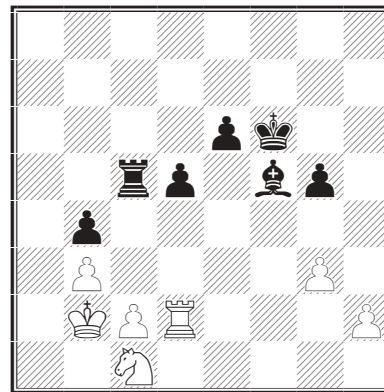
Black's queenside pawns look awful, but White needs to use his knight to get at them, and there's no way. White's next move does not solve the problem and, if anything, makes Black's game easier. My opponent knew this, but felt obliged

to try something, due to the League match standings. His team had a shot at a tie for first place, but it seemed likely that he would have to win his own game for that.

24 a4 bxa4 25 Rxa4 Rb8 26 Kc1 a5 27 Rd1 Kf7 28 Rd2 Kf6 29 Ne2 Rb4?!

This was not necessary. White still has no serious threat, and Black might just as well continue his natural counterplay with 29 ... h6.

30 Rxb4 axb4 31 b3 h6 32 Kb2 g5 33 fxe5+ hxe5 34 Nc1?!



This was tempting fate. Black's active king and dangerous center pawns now give him good winning chances, which should have been taken seriously. But just about now, I started to mismanage my time. I should not have had much difficulty finding good moves, but in the sudden-death phase that started at move 30, I used up almost my whole hour by move 45 (or even sooner).

34 ... Ke5 35 Re2+ Kd6

35 ... Kd4! is more to the point. I was afraid of 36 Na2 Rb5 37 Nxb4 Rxb4 38 c3+, but if I had looked one move further, I would have found 38 ... Kd3!

36 Na2 Rb5 37 h4 gxh4 38 gxh4 Rb7 39 Rh2 Kc5 40 h5 e5 41 h6 e4 42 Nc1 Kd4 43 Rh5 Bh7 44 Rh3 Rf7 45 Ne2+ Kc5 46 Kc1 Rf5 47 c3 bxc3 48 Rxc3+ Kd6

Since I had no time to think, the next thirteen moves probably don't make much sense, and I won't try to annotate them. In fact, I stopped keeping score at about move 50 and had to reconstruct the score from memory afterwards.

49 b4 Rf1+ 50 Kd2 Rb1 51 Rg3 Rh1 52 Ra3 Ke5 53 Ra6 Bf5 54 Rc6 Be6 55 b5 Rxe6 56 b6 d4 57 b7 Rh8 58 Nxd4 Bd5 59 Rc8 Rh2+ 60 Kc3 Bxb7 61 Rc7 Bd5 Agreed drawn

Donald J. Meigs - FM Stanislav G. Kriventsov

41st Pittsburgh Chess League, January 21, 2001

1.e4 c5 2.Nc3 Nc6 3.f4 g6 4.Nf3 Bg7 5.b3 e6 6.Bb2 Nge7 7.Na4 Bb2 8.Nb2 d5 9.d3 Qc7 10.Qd2 Nd4 11.Be2 Ne2 12.Ke2 0-0 13.Rhd1 b5 14.a4 Bb7 15.e5 b4 16.d4 a5 17.c3 Ba6+ 18.Kf2 Rab8 19.Rac1 c4 20.g4 bc3 21.Rc3 Rb3 22.Rb3 cb3 23.Rc1 Qb6 24.Rc5 Nc6 25.f5 f6 26.fg6 Ne5 27.gh7+ Kh8 28.Ne5 fe5+ 29.Kg3 Qd6 30.Ra5 e4+ 31.Kh4 Rf7 32.g5 Rh7+ 33.Kg4 Qf8 34.Qd1 Qf2 0-1

41st Annual Pittsburgh Chess League (2000-2001) Division I

| | | | <u>Sep 10</u> | <u>Oct 8</u> | <u>Nov 5</u> | <u>Dec 10</u> | <u>Jan 21</u> | <u>Feb 18</u> | <u>Mar 18</u> | |
|---|----------------------------|------|---------------|--------------|--------------|---------------|---------------|---------------|---------------|--------|
| 1 | Pitt I | 2179 | | B 5 D:2 | W 7 W:3½ | B 3 W:4 | W 4 W:3 | B 2 D:2 | W 6 W:3½ | 5:18 |
| 2 | Phalanx I | 2150 | W 7 W:4 | B 3 D:2 | | B 5 W:3½ | B 6 W:3 | W 1 D:2 | W 4 D:2 | 4½:16½ |
| 3 | CMU Tartans | 2041 | B 4 W:2½ | W 2 D:2 | B 6 W:3½ | W 1 L:0 | | W 5 W:4 | B 7 W:3 | 4½:15 |
| 4 | Triple Threat I | 2068 | W 3 L:1½ | | W 5 D:2 | B 7 W:2½ | B 1 L:1 | W 6 W:3 | B 2 D:2 | 3:12 |
| 5 | Smack My Bishop | 1894 | B 6 W:2½ | W 1 D:2 | B 4 D:2 | W 2 L:½ | W 7 D:2 | B 3 L:0 | | 2½:9 |
| 6 | Prudential Rocks | 2141 | W 5 L:1½ | B 7 W:2½ | W 3 L:½ | | W 2 L:1 | B 4 L:1 | B 1 L:½ | 1:7 |
| 7 | Boothsonian Justice | 1886 | B 2 L:0 | W 6 L:1½ | B 1 L:½ | W 4 L:1½ | B 5 D:2 | | W 3 L:1 | ½:6½ |

41st Annual Pittsburgh Chess League (2000-2001) Division II

| | | | <u>Sep 10</u> | <u>Oct 8</u> | <u>Nov 5</u> | <u>Dec 10</u> | <u>Jan 21</u> | <u>Feb 18</u> | <u>Mar 18</u> | |
|---|-------------------------------|------|---------------|--------------|--------------|---------------|---------------|---------------|---------------|--------|
| 1 | Rocky's Rooks | 1756 | B 6 W:3 | W 3 W:2½ | B 8 W:3½ | W 7 W:4 | W 5 W:2½ | B 4 L:1½ | B 2 W:2½ | 6:19½ |
| 2 | Phalanx II | 1745 | B 3 W:2½ | W 8 W:4 | B 7 W:2½ | W 6 W:2½ | W 4 D:2 | B 5 W:2½ | W 1 L:1½ | 5½:17½ |
| 3 | Hill Carnegie II | 1743 | W 2 L:1½ | B 1 L:1½ | W 5 W:2½ | B 4 W:3 | W 8 W:2½ | B 7 W:2½ | W 6 W:2½ | 5:16 |
| 4 | Hill Carnegie I | 1764 | B 8 W:3 | W 7 W:2½ | B 6 W:2½ | W 3 L:1 | B 2 D:2 | W 1 W:2½ | B 5 L:1½ | 4½:15 |
| 5 | Murrysville Chess Club | 1748 | B 7 W:4 | W 6 L:1 | B 3 L:1½ | W 8 W:2½ | B 1 L:1½ | W 2 L:1½ | W 4 W:2½ | 3:14½ |
| 6 | Pitt II | 1719 | W 1 L:1 | B 5 W:3 | W 4 L:1½ | B 2 L:1½ | W 7 D:2 | B 8 D:2 | B 3 L:1½ | 2:12½ |
| 7 | Poison Pawns | 1705 | W 5 L:0 | B 4 L:1½ | W 2 L:1½ | B 1 L:0 | B 6 D:2 | W 3 L:1½ | W 8 W:3 | 1½:9½ |
| 8 | Knight Brigade | 1578 | W 4 L:1 | B 2 L:0 | W 1 L:½ | B 5 L:1½ | B 3 L:1½ | W 6 D:2 | B 7 L:1 | ½:7½ |

41st Annual Pittsburgh Chess League (2000-2001) Division III

| | | | <u>Sep 10</u> | <u>Oct 8</u> | <u>Nov 5</u> | <u>Dec 10</u> | <u>Jan 21</u> | <u>Feb 18</u> | <u>Mar 18</u> | |
|---|-------------------|------|---------------|--------------|--------------|---------------|---------------|---------------|---------------|--------|
| 1 | Pitt III | 1597 | W 3 W:3 | B 2 W:3 | W 8 L:1½ | B 4 W:3 | W 5 D:2 | B 6 W:2½ | B 7 W:2½ | 5½:17½ |
| 2 | Hill Carnegie III | 1577 | B 5 W:2½ | W 1 L:1 | B 7 W:4 | W 6 W:3 | B 3 W:2½ | W 4 D:2 | W 8 D:2 | 5:17 |
| 3 | Gallant Knights | 1503 | B 1 L:1 | W 7 W:2½ | B 6 W:2½ | W 5 D:2 | W 2 L:1½ | B 8 W:4 | B 4 W:3 | 4½:16½ |
| 4 | Young Gunz | 1442 | B 7 D:2 | W 6 W:2½ | B 5 W:2½ | W 1 L:1 | W 8 W:4 | B 2 D:2 | W 3 L:1 | 4:15 |
| 5 | Guild | 1598 | W 2 L:1½ | B 8 W:2½ | W 4 L:1½ | B 3 D:2 | B 1 D:2 | W 7 W:3 | W 6 W:2½ | 4:15 |
| 6 | Phalanx III | 1546 | W 8 W:2½ | B 4 L:1½ | W 3 L:1½ | B 2 L:1 | B 7 W:2½ | W 1 L:1½ | B 5 L:1½ | 2:12 |
| 7 | Triple Threat II | 1576 | W 4 D:2 | B 3 L:1½ | W 2 L:0 | B 8 W:3 | W 6 L:1½ | B 5 L:1 | W 1 L:1½ | 1½:10½ |
| 8 | Mon Pawns | 1526 | B 6 L:1½ | W 5 L:1½ | B 1 W:2½ | W 7 L:1 | B 4 L:0 | W 3 L:0 | B 2 D:2 | 1½:8½ |

The crosstable for the Preliminary Swiss for Division IV appears in the Spring 2001 Newsletter. The teams in Division IV then played in quads, which are included here.

41st Annual Pittsburgh Chess League (2000-2001) Division IVA

| | | | <u>Feb 18</u> | <u>Mar 18</u> | <u>Apr 8</u> | |
|---|--------------------------|------|---------------|---------------|--------------|-------|
| 1 | Monroeville Chess Club I | 1414 | W 4 W:2½ | B 2 W:3 | W 3 W:4 | 3:9½ |
| 2 | Star Rising | 1339 | B 3 D:2 | W 1 L:1 | B 4 W:2½ | 1½:5½ |
| 3 | Pitt IV | 1352 | W 2 L:1 | W 4 D:2 | B 1 L:0 | ½:3 |
| 4 | Phalanx IV | 1396 | B 1 L:1½ | B 3 L:1 | W 2 L:1½ | 0:4 |

41st Annual Pittsburgh Chess League (2000-2001) Division IVB

| | | | <u>Feb 18</u> | <u>Mar 18</u> | <u>Apr 8</u> | |
|---|-----------------------------------|-------------|---------------|---------------|--------------|--------------|
| 1 | Monroeville Chess Club III | 1189 | B 2 W:2½ | W 3 D:2 | W 4 W:2½ | 2½:7 |
| 2 | Monroeville Chess Club II | 1278 | W 1 L:1½ | B 4 W:3½ | B 3 W:2½ | 2:7½ |
| 3 | Weenies | 1371 | W 4 W:3 | B 1 D:2 | W 2 L:1½ | 1½:6½ |
| 4 | Hill Carnegie IV | 1233 | B 3 L:1 | W 2 L:½ | B 1 L:1½ | 0:3 |

41st Annual Pittsburgh Chess League (2000-2001) Division IVC

| | | | <u>Feb 18</u> | <u>Mar 18</u> | <u>Apr 8</u> | |
|---|---------------------------------|-------------|---------------|---------------|--------------|-------------|
| 1 | Phalanx V | 1325 | W 2 W:3 | B 4 W:3 | W 3 W:4 | 3:10 |
| 2 | Triple Threat III | 1105 | B 1 L:1 | W 3 D:2 | B 4 W:3 | 1½:6 |
| 3 | Hill Carnegie/Wesley CCC | 1012 | W 4 W:3 | B 2 D:2 | B 1 L:0 | 1½:5 |
| 4 | Webspinners | 1134 | B 3 L:1 | W 1 L:1 | W 2 L:1 | 0:3 |

Monroeville CC

One of the most successful organizations during the last PCL season was the Monroeville CC, which dominated the prizes in Division IV. They are a scholastic club, though a few parents and coaches did play for their teams. They meet on Wednesdays from 6:30pm to 8:30pm at the Monroeville Academy, 4518 Northern Pike, Monroeville PA 15146-2914. Besides their teams in the league, they also take several teams each year to play (and win!) at the PA State Scholastic Championships in March at Bloomsburg. Any scholastic players who want to improve their play and have fun doing it would be well advised to join! For more information, take a look at their website: <http://mccchess.icubed.com/>

Webspinners

The PCL originally had many teams representing their companies, including former champions Westinghouse & US Steel. Currently most teams are formed by clubs, but one of the few remaining companies is Webspinners. They provide a variety of web-design and hosting services. For further information about them, take a look at their website: <http://2webspinners.com/> They even have their own free on-line chess site: <http://www.networkchess.net/> The site tracks your history against each opponent. Tournament play, teams and league play are also supported. You can play either real-time or slow-time. And a leader board shows the top players. Give it a try!

41st Annual Pittsburgh Chess League (2000-01) Prizes

Division I

Team

| | | | | |
|-------|-------------|-------|--------|------|
| 1st | Pitt I | 5-1 | 18-6 | \$90 |
| 2nd | Phalanx I | 4½-1½ | 16½-7½ | \$60 |
| Class | CMU Tartans | 4½-1½ | 15-9 | \$60 |

Board

| | | | | |
|-----------|--------------------|-----------------|------|------|
| 1st | Leverett, Bruce W | Triple Threat I | 5-1 | \$10 |
| 2nd | Ambrad, Antonio J | CMU Tartans | 4½-½ | \$10 |
| 3rd | Milisits, Ryan R | Phalanx I | 5-0 | \$10 |
| 4th | Zatuchnaya, Yanina | Pitt I | 2-2 | \$10 |
| Alternate | Jansen, Peter J | CMU Tartans | 5-1 | \$10 |

Performance

| | | | | |
|-----|--------------------------|-----------|------|------|
| 1st | Kriventsov, FM Stanislav | Phalanx I | 4½-½ | \$10 |
|-----|--------------------------|-----------|------|------|

Division II

Team

| | | | | |
|-------|------------------|-------|---------|------|
| 1st | Rocky's Rooks | 6-1 | 19½-8½ | \$80 |
| 2nd | Phalanx II | 5½-1½ | 17½-10½ | \$60 |
| Class | Hill Carnegie II | 5-2 | 16-12 | \$60 |

Board

| | | | | |
|-----------|-------------------|-----------------|-------|------|
| 1st | Garbera, Brian S | Rocky's Rooks | 4½-½ | \$10 |
| 2nd | Schragin, Jeff G | Rocky's Rooks | 5-2 | \$10 |
| 3rd | Jones, Lawrence P | Phalanx II | 4½-1½ | \$10 |
| 4th | Kapinos, Clyde E | Rocky's Rooks | 3-0 | \$10 |
| Alternate | Davie, Keith A | Hill Carnegie I | 5½-1½ | \$10 |

Division III

Team

| | | | | |
|-------|-------------------|-------|---------|------|
| 1st | Pitt III | 5½-2½ | 17½-10½ | \$70 |
| 2nd | Hill Carnegie III | 5-2 | 17-11 | \$60 |
| Class | Gallant Knights | 4½-2½ | 16½-11½ | \$60 |

Board

| | | | | |
|-----------|---------------------|-------------------|-------|------|
| 1st | Healy, Michael R | Hill Carnegie III | 5½-½ | \$10 |
| 2nd | Maxwell, Michael J | Guild | 5½-1½ | \$10 |
| 3rd | Flaherty, Timothy J | Pitt III | 4½-1½ | \$10 |
| 4th | Kemp, K Lawrence | Gallant Knights | 5-2 | \$10 |
| Alternate | Barry, Herbert III | Pitt III | 3½-1½ | \$10 |

Performance

| | | | | |
|-----|-----------------|-------------------|-------|------|
| 2nd | White, Howard F | Hill Carnegie III | 5½-1½ | \$10 |
|-----|-----------------|-------------------|-------|------|

Division IV

Team

| | | | | |
|-----------|----------------------------|-------|-------|------|
| Section A | Monroeville Chess Club I | 6½-1½ | 23-9 | \$70 |
| Section B | Monroeville Chess Club III | 5-3 | 17-15 | \$60 |
| Section C | Phalanx V | 5-3 | 18-14 | \$60 |
| Prelims | Phalanx IV | 4-4 | 18-14 | \$60 |

Board

| | | | | |
|-----------|---------------------|--------------------------|-------|------|
| 1st | Blair, David A | Monroeville Chess Club I | 5-1 | \$10 |
| 2nd | Seshadri, Hari | Monroeville Chess Club I | 6½-1½ | \$10 |
| 3rd | Joseph, Bryan G | Monroeville Chess Club I | 6½-1½ | \$10 |
| 4th | Grayson, Garrett G | Hill Carnegie/Wesley CCC | 5-2 | \$10 |
| Alternate | Schroeder, Edward J | Phalanx IV | 5-0 | \$10 |

PCL Quick Quad Grand Prix Prizes

| | |
|---------------------|-----------------|
| Grand Prix Champion | Ryan R Milisits |
| Top Age 18 & Under | Kevin R Green |
| Top Age 12 & Under | John Wong, Jr |

6th 2000-2001 PCL Quick Quads - March 18, 2001

Quad 1

| # | Name | Pre Rat | Post Rat | Rd 1 | Rd 2 | Rd 3 | Score | Prize |
|---|---------------------|---------|----------|------|------|------|-------|-------|
| 1 | Milisits, Ryan R | 1913 | 1939 | W3 | W4 | W2 | 3 | \$20 |
| 2 | Booth, James R | 2039 | 2024 | W4 | D3 | L1 | 1½ | |
| 3 | Klein, Charles W Jr | 1707 | 1725 | L1 | D2 | W4 | 1½ | |
| 4 | Healy, Michael R | 1732 | 1708 | L2 | L1 | L3 | 0 | |

Quad 2

| # | Name | Pre Rat | Post Rat | Rd 1 | Rd 2 | Rd 3 | Score | Prize |
|---|---------------------|---------|----------|------|------|------|-------|-------|
| 1 | Fetahagic, Denis | 1752/14 | 1804/17 | W2 | W3 | W4 | 3 | \$20 |
| 2 | Booth, Michael J | 1492 | 1546 | L1 | W4 | W3 | 2 | |
| 3 | Clary, Earl Jr | 1600 | 1600 | W4 | L1 | L2 | 1 | |
| 4 | Vaughn, Alvin Leroy | 1631/13 | 1559/16 | L3 | L2 | L1 | 0 | |

Quad 3

| # | Name | Pre Rat | Post Rat | Rd 1 | Rd 2 | Rd 3 | Score | Prize |
|---|--------------------|---------|----------|------|------|------|-------|-------|
| 1 | Young, Jason | 1415/23 | 1463 | W3 | W2 | W4 | 3 | \$20 |
| 2 | Milisits, Robert A | 1387 | 1355 | W4 | L1 | L3 | 1 | |
| 3 | Opaska, Michael P | 1327 | 1305 | L1 | L4 | W2 | 1 | |
| 4 | Surma, Jeffrey F | 1091 | 1118 | L2 | W3 | L1 | 1 | |

Quad 4

| # | Name | Pre Rat | Post Rat | Rd 1 | Rd 2 | Rd 3 | Score | Prize |
|---|----------------|---------|----------|------|------|------|-------|-------|
| 1 | Wong, John Jr | 1151 | 1170 | W2 | D4 | W3 | 2½ | \$20 |
| 2 | Green, Kevin R | 952 | 1025 | L1 | W3 | W4 | 2 | |
| 3 | Datz, David | 1010 | 995 | W4 | L2 | L1 | 1 | |
| 4 | Xiao, Michael | 1055/09 | 991/12 | L3 | D1 | L2 | ½ | |

4th 2000-2001 PCL Quick Quads - January 21, 2001

Quad

| # | Name | Pre Rat | Post Rat | Rd 1 | Rd 2 | Rd 3 | Score | Prize |
|---|---------------------|---------|----------|------|------|------|-------|-------|
| 1 | Milisits, Ryan R | 1882 | 1921 | W3 | W4 | W2 | 3 | \$20 |
| 2 | Strychor, Rodney | 2048/10 | 2028/13 | W4 | W3 | L1 | 2 | |
| 3 | Chernoff, Dan H | 1847/16 | 1832/19 | L1 | L2 | W4 | 1 | |
| 4 | Klein, Charles W Jr | 1727 | 1707 | L2 | L1 | L3 | 0 | |

Swiss 1

| # | Name | Pre Rat | Post Rat | Rd 1 | Rd 2 | Rd 3 | Score | Prize |
|---|--------------------|---------|----------|------|------|------|-------|-------|
| 1 | Fetahagic, Denis | 1772/06 | 1816/09 | W2 | D3 | W4 | 2½ | \$20 |
| 2 | Papariella, Justin | 1523 | 1559 | L1 | W5 | W6 | 2 | \$10 |
| 3 | White, Howard F | 1614/11 | 1634/14 | W4 | D1 | L5 | 1½ | |
| 4 | Healy, Michael R | 1738 | 1715 | L3 | W6 | L1 | 1 | |
| 5 | Clary, Earl Jr | 1600 | 1600 | L6 | L2 | W3 | 1 | |
| 6 | Barry, Herbert III | 1468 | 1471 | W5 | L4 | L2 | 1 | |

Swiss 2

| # | Name | Pre Rat | Post Rat | Rd 1 | Rd 2 | Rd 3 | Score | Prize |
|---|---------------------|---------|----------|------|------|------|-------|-------|
| 1 | Bottorff, Timothy J | 1336 | 1372 | W5 | W6 | W2 | 3 | \$20 |
| 2 | Opaska, Michael P | 1258 | 1291 | W4 | W3 | L1 | 2 | |
| 2 | Milisits, Robert A | 1401 | 1387 | W6 | L2 | W4 | 2 | |
| 4 | Surma, Jeffrey F | 1114 | 1105 | L2 | W5 | L3 | 1 | \$5 |
| 5 | Green, Kevin R | 896 | 924 | L1 | L4 | W6 | 1 | \$5 |
| 6 | Datz, David | 1128 | 1074 | L3 | L1 | L5 | 0 | |

5th 2000-2001 PCL Quick Quads - February 18, 2001

Quad 1

| # | Name | Pre Rat | Post Rat | Rd 1 | Rd 2 | Rd 3 | Score | Prize |
|---|---------------------|---------|----------|------|------|------|-------|-------|
| 1 | Milisits, Ryan R | 1921 | 1913 | W4 | D3 | D2 | 2 | \$10 |
| 2 | Healy, Michael R | 1715 | 1732 | D3 | W4 | D1 | 2 | \$10 |
| 3 | Foreman, Fred D | 1712 | 1703 | D2 | D1 | L4 | 1 | |
| 4 | Vaughn, Alvin Leroy | 1624/10 | 1631/13 | L1 | L2 | W3 | 1 | |

Quad 2

| # | Name | Pre Rat | Post Rat | Rd 1 | Rd 2 | Rd 3 | Score | Prize |
|---|----------------------|---------|----------|------|------|------|-------|-------|
| 1 | Jones, Lawrence P | 1610 | 1630 | W2 | L3 | W4 | 2 | \$7 |
| 2 | Papariella, Justin J | 1559 | 1597 | L1 | W4 | W3 | 2 | \$7 |
| 3 | Fetahagic, Denis | 1816/09 | 1793/12 | W4 | W1 | L2 | 2 | \$7 |
| 4 | Clary, Earl Jr | 1600 | 1600 | L3 | L2 | L1 | 0 | |

Swiss

| # | Name | Pre Rat | Post Rat | Rd 1 | Rd 2 | Rd 3 | Score | Prize |
|---|---------------------|---------|----------|------|------|------|-------|-------|
| 1 | Opaska, Michael P | 1291 | 1327 | W5 | W4 | W2 | 3 | \$20 |
| 2 | Wong, John Jr | 1050 | 1151 | W3 | W5 | L1 | 2 | \$10 |
| 3 | Bottorff, Timothy J | 1372 | 1349 | L2 | W6 | W4 | 2 | |
| 4 | Green, Kevin R | 924 | 952 | W6 | L1 | L3 | 1 | |
| 5 | Surma, Jeffrey F | 1105 | 1091 | L1 | L2 | W6 | 1 | |
| 6 | Datz, David | 1074 | 1010 | L4 | L3 | L5 | 0 | |

7th 2000-2001 PCL Quick Quads - April 8, 2001

Quad 1

| # | Name | Pre Rat | Post Rat | Rd 1 | Rd 2 | Rd 3 | Score | Prize |
|---|-------------------|---------|----------|------|------|------|-------|-------|
| 1 | Milisits, Ryan R | 2000 | 2010 | W3 | W2 | D4 | 2½ | \$20 |
| 2 | Fetahagic, Denis | 1682 | 1746 | W4 | L1 | W3 | 2 | |
| 3 | Prokhov, Vassil K | 1919 | 1909 | L1 | W4 | L2 | 1 | |
| 4 | Booth, James R | 2024 | 1998 | L2 | L3 | D1 | ½ | |

Quad 2

| # | Name | Pre Rat | Post Rat | Rd 1 | Rd 2 | Rd 3 | Score | Prize |
|---|---------------------|---------|----------|------|------|------|-------|-------|
| 1 | Healy, Michael R | 1692 | 1711 | W4 | W3 | W2 | 3 | \$20 |
| 2 | Young, Jason | 1463 | 1498 | W3 | W4 | L1 | 2 | |
| 3 | Clary, Earl Jr | 1600 | 1600 | L2 | L1 | D4 | ½ | |
| 4 | Bottorff, Timothy J | 1349 | 1343 | L1 | L2 | D3 | ½ | |

Swiss

| # | Name | Pre Rat | Post Rat | Rd 1 | Rd 2 | Rd 3 | Score | Prize |
|---|-------------------|---------|----------|------|------|------|-------|-------|
| 1 | Surma, Jeffrey F | 1118 | 1256 | W6 | W3 | W4 | 3 | \$20 |
| 2 | Datz, David | 990 | 1079 | L4 | W6 | W5 | 2 | \$10 |
| 3 | Jeske, Michael P | 1108/17 | 1114/20 | W5 | L1 | D6 | 1½ | |
| 4 | Opaska, Michael P | 1329 | 1280 | W2 | L5 | L1 | 1 | |
| 5 | Green, Kevin R | 1049 | 1045 | L3 | W4 | L2 | 1 | |
| 6 | Wong, John Jr | 1170 | 1122 | L1 | L2 | D3 | ½ | |

8th 2000-2001 PCL Quick Quads - April 8, 2001

Quad 1

| # | Name | Pre Rat | Post Rat | Rd 1 | Rd 2 | Rd 3 | Score | Prize |
|---|------------------|---------|----------|------|------|------|-------|-------|
| 1 | Martinak, Tom M | 2260 | 2256 | W4 | W2 | D3 | 2½ | \$20 |
| 2 | Fetahagic, Denis | 1746 | 1786 | W3 | L1 | W4 | 2 | |
| 3 | Meigs, Donald J | 1998 | 1992 | L2 | W4 | D1 | 1½ | |
| 4 | Healy, Michael R | 1711 | 1695 | L1 | L3 | L2 | 0 | |

Quad 2

| # | Name | Pre Rat | Post Rat | Rd 1 | Rd 2 | Rd 3 | Score | Prize |
|---|----------------------|---------|----------|------|------|------|-------|-------|
| 1 | Opaska, Michael P | 1280 | 1378 | W2 | W3 | W4 | 3 | \$20 |
| 2 | Bashur, Michael F Jr | 1255 | 1290 | L1 | W4 | W3 | 2 | |
| 3 | Datz, David | 1079 | 1105 | W4 | L1 | L2 | 1 | |
| 4 | Barry, Herbert III | 1471 | 1391 | L3 | L2 | L1 | 0 | |

PCL Quick Quads

Each year, we run quads before each round of the league (except in September when we are too busy organizing). These are played at Game / 15 Minutes, so each game takes at most a half hour. These games are rated under the USCF Quick Ratings and so do not effect your USCF Regular Rating which is used for the PCL matches. After everyone registers we organize the players unto groups of four based upon their

quick ratings. We try to place unrateds based upon our estimate of their rating - though with no knowledge they will default to the bottom section. These 4-player sections, called quads, then play a round robin, all-play-all. If we don't have a number of entrants that divides up perfectly, we will organize the bottom section as a 6-player 3-round swiss (and add a class prize of \$10 for the top scorer among the bottom three rated entries). We also give three prizes for overall quad activity over the entire league season - Grand Prix Champion, Top Age 18 & Under, and Top Age 12 & Under.

Division I

| | | |
|----------------------------|-------------|---------------------|
| 1 Pitt I | 2179 | 5:18 |
| Tom M Martinak | | 412-681-7590 |
| Magar, Thomas P | 2205 | 2-2 |
| Martinak, Tom M | 2225 | 3-0 |
| Renk, Robert M | 2100 | 4½-1½ |
| Zatuchnaya, Yanina | 2095 | 2-2 |
| Ridgway, William M | 2186 | 0-0 |
| Strychor, Rodney | 2048 | 2½-½ |
| Neuenschwander, Rick | 1875 | 3-0 |
| Fetahagic, Denis | 1758 | 1-0 |
| 2 Phalanx I | 2150 | 4½:16½ |
| Ryan R Milisits | | 412-421-7225 |
| Kriventsov, FM Stanislav G | 2449 | 4½-½ |
| Dempler, William R | 2105 | 2½-2½ |
| Milisits, Ryan R | 2064 | 5-0 |
| Geller, Clint B | 1959 | 1-2 |
| Lewis, Gary W | 1873 | ½-1½ |
| Vaserstein, Gregory L | 1983 | 3-1 |
| Sheinfeld, Brian | 1861 | 0-0 |
| 3 CMU Tartans | 2041 | 4½:15 |
| Jeffrey L Quirke | | 412-422-5137 |
| Quirke, Jeffrey L | 2170 | 2-3 |
| Ambrad, Antonio J | 2022 | 4½-½ |
| Kalai, Adam | 1996 | 0-0 |
| Castillo, Gonzalo | 1925 | 2½-3½ |
| Jansen, Peter J | 1977 | 5-1 |
| Sampat, Pragnesh S | 1632 | 0-0 |
| Kligman, Yuzef | 1485 | 1-1 |
| Muckey, Scott M | 1119 | 0-0 |
| Heffron, John F | 0-0 | |
| 4 Triple Threat I | 2068 | 3:12 |
| Wade E Chabassol | | 412-276-9233 |
| Leverett, Bruce W | 2326 | 5-1 |
| Schreiber, Jeffrey A | 2042 | 4-2 |
| Surlow, William L | 2023 | 0-0 |
| Lees, Richard W | 1880 | ½-2½ |
| Kownacki, Ronald W | 1846 | 0-3 |
| Cunliffe, Frank H | 1843 | 0-0 |
| Chabassol, Wade E | 1823 | 2½-1½ |
| Hopfer, Jerry P | 1751 | 0-0 |
| Cohen, Mark A | 1730 | 0-1 |
| Surlow, John L | 1658 | 0-0 |
| 5 Smack My Bishop | 1894 | 2½:9 |
| Benjamin M Gradsky | | 412-621-2147 |
| Inghram, Daniel G | 2035 | 2-2 |
| Gradsky, Benjamin M | 1997 | 1-4 |
| Chernoff, Dan H | 1837 | 4-1 |
| Wang, Yuan | 1697 | 0-0 |
| Campbell, Bill J | 1705 | 0-0 |
| Thomas, Matthew B | 1568 | 2-2 |
| Ohkawa, Shingo | 1280 | 0-0 |
| Datz, David | 1385 | 0-1 |

| | | |
|------------------------------|-------------|---------------------|
| 6 Prudential Rocks | 2141 | 1:7 |
| David A Kolarik | | |
| Shabalov, GM Alexander | 2667 | 0-0 |
| Meigs, Donald J | 2040 | ½-5½ |
| Kolarik, David A | 1925 | ½-2½ |
| Mc Kernan, Timothy C | 1931 | 1½-1½ |
| Osipovich, Alexander | 1906 | 2½-3½ |
| Baggethun, Paul | 1900 | 0-0 |
| Smiley, Andrew M | 1892 | 2-0 |
| Nelson, Lawrence J | 1727 | 0-1 |
| 7 Boothsonian Justice | 1886 | ½:6½ |
| James R Booth | | 724-938-0342 |
| Booth, James R | 2071 | 1½-2½ |
| Papariella, Justin J | 1894 | 1½-2½ |
| Prokhov, Vassil K | 1828 | 0-0 |
| Booth, Michael J | 1749 | ½-5½ |
| Harrison, Patrick W | 1583 | ½-3½ |
| Sun, Zhipeng | 1613 | 2-2 |
| Young, Shih Houng | 1492 | ½-1½ |

Division II

| | | |
|---------------------------|-------------|---------------------|
| 1 Rocky's Rooks | 1756 | 6:19½ |
| Clyde E Kapinos | | 412-771-2711 |
| Garbera, Brian S | 1946 | 4½-½ |
| Schragin, Jeff G | 1765 | 5-2 |
| Szurek, James E | 1638 | 3-3 |
| Kapinos, Clyde E | 1675 | 3-0 |
| Barr, Edward W | 1567 | 0-2 |
| Linderman, Dr Bruce E | 1603 | 2-1 |
| Holsinger, Michael K | 1574 | 1-0 |
| Lokmer, John M | 1502 | 0-0 |
| Edwards, Robert D | 1392 | 0-0 |
| King, Glendon | 1064 | 1-0 |
| Devlin, Patrick J | 828 | 0-0 |
| Shah, Aaron | 645 | 0-0 |
| Hoch, Matthew | 644 | 0-0 |
| 2 Phalanx II | 1745 | 5½:17½ |
| Robert A Milisits | | 412-421-7225 |
| Duerig, Paul R | 1804 | 3½-3½ |
| Caliguire, John J | 1858 | 4-2 |
| Jones, Lawrence P | 1700 | 4½-1½ |
| Pennington, Robert J | 1616 | 0-1 |
| Kostyak, Michael | 1556 | 3-2 |
| Milisits, Robert A | 1563 | 2½-½ |
| 3 Hill Carnegie II | 1743 | 5:16 |
| Bacler Jackson Jr | | 412-731-1272 |
| Borden, Edwin L | 1920 | 2½-2½ |
| Washington, Charles | 1805 | 4½-2½ |
| Jackson, Bacler Jr | 1668 | 4-3 |
| Mitchell, Courtland L | 1579 | 3½-1½ |
| West, Darrell A | 1427 | 1½-1½ |
| Kabogota, Rashidi I | 1468 | 0-0 |

| | | |
|---------------------------------|-------------|---------------------|
| 4 Hill Carnegie I | 1764 | 4½:15 |
| Joseph A Jones Jr | | |
| Kennedy, Walker | 1833 | 3-4 |
| Jones, Joseph A Jr | 1833 | 0-0 |
| Smith, Gerald S | 1679 | 2½-4½ |
| Mallory, Nathaniel | 1677 | 4-3 |
| Davie, Keith A | 1709 | 5½-1½ |
| 5 Murrysville Chess Club | 1748 | 3:14½ |
| Harry H Replogle Jr | | 724-339-2208 |
| Replogle, Harry H Jr | 1869 | 5-2 |
| Griffin, John W | 1821 | 0-0 |
| Chang, Allen C | 1757 | 2½-1½ |
| Shultz, Robert D | 1543 | 3-2 |
| Lawlor, Joseph R II | 1444 | 1½-3½ |
| Bashur, Michael F Jr | 1146 | 2½-2½ |
| Haas, Jim M | 1108 | 0-0 |
| Shellhammer, Daniel M | 1099 | 0-2 |
| Lawlor, Joseph R III | 1287 | 0-0 |
| 6 Pitt II | 1719 | 2:12½ |
| Welsh S White | | 412-362-7053 |
| White, Welsh S | 1731 | 2-5 |
| Klein, Charles W Jr | 1861 | 4-2 |
| Brasko, Pete III | 1676 | 2½-2½ |
| Phillips, Matthew C | 1606 | 3-3 |
| Markowitz, Darryl S | 1561 | 0-0 |
| Browne, William J | 1400 | 1-3 |
| 7 Poison Pawns | 1705 | 1½:9½ |
| Richard D Harris | | 724-863-9404 |
| Looman, David C | 1837 | 2½-2½ |
| Buvit, Timothy P | 1755 | 3-2 |
| Budden, Michael J | 1586 | 2-5 |
| Elsleger, Joseph | 1636 | 0-0 |
| Harris, Richard D | 1593 | 1-2 |
| Budden, Robert M | 1402 | 1-1 |
| Pierce, Raymond | 789 | 0-4 |
| Ondrey, Brian | Unr | 0-1 |
| 8 Knight Brigade | 1578 | ½:7½ |
| Richard D Harris | | 724-863-9404 |
| Clary, Earl Jr | 1712 | 2½-4½ |
| Boles, Belford J | 1556 | 1-5 |
| Setterberg, Bert W Jr | 1532 | 2-4 |
| Busofsky, Anthony P | 1475 | 2-4 |
| Enright, Tim | 1510 | 0-0 |
| O'Halloran, Terence | 1242 | 0-0 |
| Franklin, David G | Unr | 0-0 |
| Khan, Neiladri K | 1081 | 0-2 |

Division III

| | | |
|------------------------|-------------|---------------------|
| 1 Pitt III | 1597 | 5½:17½ |
| Russell G Schuh | | 412-421-3729 |
| Schuh, Russell G | 1600 | 3½-2½ |
| Lattanzio, John J | 1566 | 3-3 |
| Flaherty, Timothy J | 1607 | 4½-1½ |

| | | |
|----------------------------|-------------|---------------------|
| Todd, Chris | 1579 | 3-0 |
| Narasimhan, Narkeeran | 1600 | 0-0 |
| Barry, Herbert III | 1432 | 3½-1½ |
| Wamsley, Scott | 1320 | 0-0 |
| Bottorff, Timothy J | 1248 | 0-0 |
| 2 Hill Carnegie III | 1577 | 5:17 |
| Walter R Kizzie Jr | | 412-244-9421 |
| Healy, Michael R | 1773 | 5½-½ |
| White, Howard F | 1650 | 5½-1½ |
| Strong, Edsel | 1539 | 4-3 |
| Kizzie, Walter R Jr | 1289 | 2-4 |
| Boyd, Donald J | 1192 | 0-0 |
| Arnold, William | 1345 | 0-2 |
| 3 Gallant Knights | 1503 | 4½:16½ |
| K Lawrence Kemp | | 800-675-1826 |
| Kirk, Patrick T | 1639 | 3½-2½ |
| Fitzgibbons, Kevin J | 1466 | 4-3 |
| Schiff, Aaron J | 1482 | 3-3 |
| Kemp, K Lawrence | 1426 | 5-2 |
| Schiff, Robert D | 1257 | 0-0 |
| Van Sickle, Rodney J | 1253 | 1-1 |
| Brown, Joseph R | 1021 | 0-0 |
| Schiff, Michael D | 948 | 0-0 |
| Perez, Jose C | Unr | 0-0 |
| Rowe, Kyle E | 683 | 0-0 |
| 4 Young Gunz | 1442 | 4:15 |
| Harry H Replogle Jr | | 724-339-2208 |
| Glover, Jared M | 1653 | 4½-2½ |
| Handke, Michael E | 1417 | 2-3 |
| Mak, Rodrick | 1417 | 3-4 |
| Rioja, Brandon | 1256 | 0-0 |
| Replogle, John M | 1282 | 2½-½ |
| Rioja, Jonathan R | 1199 | 2-1 |
| Allison, Bob | 1052 | 0-0 |
| Replogle, Douglas | 992 | 0-0 |
| Haas, Kevin Marshall | 1010 | 0-1 |
| Seadler, Bradley T | 828 | 0-0 |
| Wilkin, Max R | 902 | 0-0 |
| Shellhammer, Corey D | 907 | 1-1 |
| 5 Guild | 1598 | 4:15 |
| Robert D Stuart | | 412-276-3443 |
| Stuart, Robert D | 1609 | ½-4½ |
| Maxwell, Michael J | 1641 | 5½-1½ |
| Cummings, James S | 1526 | 3½-1½ |
| Minnick, Thomas W | 1518 | 3½-3½ |
| Schumacher, Matthew J | 1490 | 0-0 |
| Klutz, Joseph | 1527 | 0-0 |
| Creek, Roy J | 1282 | 0-0 |
| Opaska, Michael P | 1616 | 2-1 |
| Cummings, Stephen | 967 | 0-0 |
| 6 Phalanx III | 1546 | 2:12 |
| James W Neral | | 412-931-5623 |
| Foreman, Fred D | 1700 | 1½-5½ |
| Collins, Charles A | 1566 | 0-0 |
| Vaughn, Alvin Leroy | 1498 | 3-3 |

| | | | |
|----------|-------------------------|-------------|---------------------|
| | Neral, James W | 1421 | 3-4 |
| | Levi, Robert C | 1374 | 1½-½ |
| | Parker, Bradley W | 1331 | 3-2 |
| 7 | Triple Threat II | 1576 | 1½:10½ |
| | Wade E Chabassol | | 412-276-9233 |
| | Kennedy, Kevin R | 1656 | 3½-3½ |
| | Dobbins, Kenneth E | 1580 | 1½-3½ |
| | Saraka, Robert L | 1606 | 1-1 |
| | Chopping, Peter T | 1462 | 1-3 |
| | Simmons, Michael D | 1307 | 2-5 |
| | Spisak, Joseph J | 1001 | 1½-1½ |
| 8 | Mon Pawns | 1526 | 1½:8½ |
| | Eric A Berthoud | | 412-221-2394 |
| | Moskowitz, Arthur | 1635 | 3-2 |
| | Grego, Michael D | 1520 | ½-4½ |
| | Tomsic, Albert L Jr | 1438 | 2½-2½ |
| | Berthoud, Eric A | 1511 | 2½-3½ |
| | Al-Droubi, Samer S | 1416 | 0-0 |
| | Berthoud, Kevin F | 1165 | 0-0 |
| | Berthoud, Kyle A | 972 | 0-0 |
| | Neville, David E | 893 | 0-0 |
| | Berthoud, Kent | 1080 | 0-1 |
| | Wysocki, Eli | 425 | 0-0 |
| | Wysocki, Caleb | 693 | 0-0 |
| | Wong, Roman W | Unr | 0-0 |
| | Wong, Wiseley A | Unr | 0-0 |
| | Rankins, Tia | 853 | 0-2 |
| | Rankins, Donald E | 440 | 0-0 |

Division IVA

| | | | |
|----------|---------------------------------|-------------|---------------------|
| 1 | Monroeville Chess Club I | 1414 | 6½:23 |
| | Delbert D Tyler I | | 412-824-5015 |
| | Blair, David A | 1826 | 5-1 |
| | Seshadri, Hari | 1394 | 6½-1½ |
| | Joseph, Bryan G | 1328 | 6½-1½ |
| | Krut, Andrew T | 1106 | ½-½ |
| | Orbison, Charles V | 986 | 1½-2½ |
| | Lederman, Craig M | 753 | 3-1 |
| | Cerini, Zachary | 756 | 0-0 |
| | Yan, Alan | 587 | 0-0 |
| | Yan, Amy | 432 | 0-0 |
| | Gilbreath, Dustin R | 452 | 0-1 |
| 2 | Star Rising | 1339 | 4½:18 |
| | James R Booth | | 724-938-0342 |
| | Jampole, Ezra A | 1333 | 3½-3½ |
| | Young, Jason | 1523 | 5-2 |
| | Zhai, Alex | 1130 | 5-3 |
| | Barbara, Richard P | 1289 | 1½-½ |
| | Weis, Andrew P | 1210 | 0-0 |
| | Barbara, Matthew | 1149 | 1½-2½ |
| | Li, Yile | 1043 | 0-0 |
| | Jampole, Marc | 1010 | 1-0 |
| | Barbara, Joshua | 922 | 0-0 |
| | Sun, LiAnn | 732 | ½-1½ |

| | | | |
|----------|----------------------------|-------------|---------------------|
| | Harrison, James H Jr | 843 | 0-0 |
| | Papariella, Jim | 0-0 | |
| 3 | Pitt IV | 1352 | 4:15½ |
| | Chad R Newell | | 412-383-3029 |
| | Wamsley, Tom R Jr | 1528 | 4½-½ |
| | Newell, Chad R | 1400 | 4½-2½ |
| | Bolden, Peter B | 1284 | 2½-½ |
| | Winners, Bob J | 1164 | 0-0 |
| | Tobias, Randy F | 1056 | 0-0 |
| | Garrett, Ben J | 1007 | 3-3 |
| | Neuenschwander, Eric J | 1196 | 1-0 |
| | White, Ryan T | 883 | 0-0 |
| | Terrell, Stephen | 623 | 0-0 |
| 4 | Phalanx IV | 1396 | 4:18 |
| | Ernest N Gennaccaro | | 412-247-1689 |
| | Khan, A Aziz | 1422 | 1½-1½ |
| | Vidak, Jon | 1401 | 2-3 |
| | Gennaccaro, Ernest N | 1374 | 4-3 |
| | Burt, Arthur L Jr | 1343 | 3-2 |
| | Schroeder, Edward J | 1283 | 5-0 |
| | Reilly, Dennis M | 1385 | 0-1 |
| | Surma, Jeffrey F | 1219 | 2-2 |
| | Bolotinsky, Max | 1173 | 0-0 |
| | Thompson, Douglas A | 1092 | 0-0 |
| | Smith, Jason A | 969 | ½-½ |

Division IVB

| | | | |
|----------|-----------------------------------|-------------|---------------------|
| 1 | Monroeville Chess Club III | 1189 | 5:17 |
| | Delbert D Tyler I | | 412-824-5015 |
| | Mezherytski, Kesha | 1208 | 3-3 |
| | Tyler, Delbert D I | 1141 | 2½-½ |
| | Seshadri, Ganesh | 1149 | 3-2 |
| | Lederman, Mathew | 1063 | 4-4 |
| | Guerrieri, Luis | 1258 | 4-1 |
| | Unal, Deniz B | 884 | 0-1 |
| | Woods, Daniel | 839 | 0-1 |
| | Hill, Darius M | 768 | 0-1 |
| | Tyler, Melissa L | 799 | 0-0 |
| | Seshadri, Priyanka S | 908 | ½-½ |
| | Woods, Christopher | 664 | 0-0 |
| | Tyler, Delbert D II | 1020 | 0-1 |
| 2 | Monroeville Chess Club II | 1278 | 4:16½ |
| | Delbert D Tyler I | | 412-824-5015 |
| | Cheung, Jack | 1484 | 1-1 |
| | Steele, Alan J | 1490 | 4½-1½ |
| | Kumar, Vivek R | 1008 | 3-4 |
| | Hickman, Michael A | 1127 | 4½-3½ |
| | Evans, Micah D | 1002 | 2-2 |
| | Prokopik, George | 940 | 1-1 |
| | Joseph, Geoffrey | 749 | ½-1½ |
| | Steele, Benjamin | 1012 | 0-1 |
| | Seshadri, Menaka M | 565 | 0-0 |
| | Alfieri, Peter R Jr | 778 | 0-0 |

| | | |
|---------------------------|-------------|---------------------|
| 3 Weenies | 1371 | 4½:16 |
| Joseph V Toscano | | 724-444-4455 |
| Huselton, Steven R | 1548 | 5-3 |
| Gregorowicz, Henry A | 1411 | 0-1 |
| Dillman, David J | 1276 | 3-4 |
| O'Lear, Michael D | 1214 | 0-0 |
| Willby, Michael D | 1249 | 4-3 |
| Toscano, Joseph V | 1132 | 4-3 |
| 4 Hill Carnegie IV | 1233 | 3:13½ |
| Calvin Skinner | | 412-401-8869 |
| Desaw, Shawn | 1419 | 5-3 |
| Skinner, Calvin | 1207 | 1-1 |
| Gary, Andre | 1154 | 0-2 |
| Moore, William Jr | 1150 | 3-4 |
| Thompson, Steven | Unr | 0-1 |
| Thebaud, Brian G | 1077 | 3½-3½ |
| Mc Clain, Jerome W | 810 | 1-2 |

Division IVC

| | | |
|-----------------------------------|-------------|---------------------|
| 1 Phalanx V | 1325 | 5:18 |
| Richard J Boncek | | 412-481-6911 |
| Boncek, Richard J | 1493 | 1½-½ |
| Simizu, Akira M | 1357 | 0-0 |
| Nelson, Kelly | 1217 | 1½-1½ |
| Wong, John Jr | 1206 | 3½-2½ |
| Moore, Elaine | 983 | 0-2 |
| Gursoz, Ayse | 1128 | 3-3 |
| Anderson, Joey | 1046 | 0-0 |
| Nelson, Brian W | 1081 | 2-2 |
| Green, Kevin R | 1232 | 5-2 |
| Otroba, Thomas T | 706 | 0-0 |
| Kester, Richard | 709 | 0-0 |
| Levi, Jina | 287 | 0-0 |
| Schreiber, Avi J | 1018 | 1½-½ |
| 2 Triple Threat III | 1105 | 1½:11 |
| Wade E Chabassol | | 412-276-9233 |
| Spada, Mark J | 1144 | ½-1½ |
| Marnik, Kevin J | 1139 | 4-4 |
| Dimmock, Jarred A | 1034 | ½-½ |
| Marnik, James R | 1025 | 4-4 |
| Raney, Russell W | 801 | 0-1 |
| Marnik, Nick | 633 | 2-6 |
| Blocki, Jeremiah | 1104 | 0-0 |
| 3 Hill Carnegie/Wesley CCC | 1012 | 3½:12½ |
| Rev Robert W Lay I | | 412-771-8422 |
| Lay, Rev Robert W I | 1153 | 1½-6½ |
| Lay, Brittney | 995 | 2-5 |
| Lay, Robert W II | 989 | 3-4 |
| Grayson, Garrett G | 910 | 5-2 |
| Ellison, Kevin M | 738 | 1-0 |
| Dixon, Lalonnie Lynn | 601 | 0-0 |
| Waller, Brennan | 547 | 0-0 |
| Chapman, DeAndre | 572 | 0-0 |
| Lay, Chantelle M | 488 | 0-0 |

| | | |
|--------------------------|---------------------|--------------|
| Jones, John | 643 | 0-0 |
| Grayson, Jeron | 301 | 0-0 |
| 4 Webspinners | 1134 | 1½:10 |
| Steven W Crandall | 412-798-9244 | |
| Crandall, Steven W | 1404 | 4-4 |
| Ketterman, Tim | 1058 | 1-4 |
| Simpson, Tom | 926 | 1-4 |
| Davis, Michael | 1065 | 4-3 |
| Davis, Erin | 1009 | 0-1 |
| Glaister, Ron | Unr | 0-0 |
| Yunkins, Dave | Unr | 0-0 |
| Mealy, Terry K Jr | Unr | 0-2 |
| Michael, David J | 830 | 0-3 |

PCL Quick Quad Grand Prix Standings

| Place | Name (Age) | Points | Events |
|--|------------------------------|------------|----------|
| 1 | Milisits, Ryan R (14) | 17½ | 7 |
| 2 | Healy, Michael R | 10 | 6 |
| 2 | Surma, Jeffrey F | 10 | 6 |
| 4 | Fetahagic, Denis | 9½ | 4 |
| 5 | Green, Kevin R (14) | 8½ | 6 |
| 6 | Opaska, Michael P (14) | 8 | 5 |
| 7 | Klein, Charles W Jr | 7½ | 5 |
| 8 | Wong, John Jr (11) | 7 | 5 |
| 9 | Young, Jason (12) | 7 | 3 |
| 10 | Clary, Earl Jr | 6½ | 7 |
| 11 | Milisits, Robert A | 5½ | 4 |
| 12 | Bottorff, Timothy J | 5½ | 3 |
| 13 | Booth, Michael J (14) | 5 | 2 |
| 14 | Booth, James R | 4½ | 3 |
| 15 | Datz, David | 4 | 5 |
| 16 | Papariella, Justin J (14) | 4 | 2 |
| 17 | Corey, Tamara (15) | 3 | 1 |
| 17 | Inghram, Daniel G (18) | 3 | 1 |
| 17 | Magar, Thomas P | 3 | 1 |
| 17 | Sun, Zhipeng (14) | 3 | 1 |
| 21 | Barry, Herbert III | 2½ | 3 |
| 22 | Haas, Kevin Marshall (13) | 2½ | 1 |
| 23 | Jones, Lawrence P | 2 | 3 |
| 24 | Kriventsov, FM Stanislav G | 2 | 1 |
| 24 | Mc Graw, Trevor (14) | 2 | 1 |
| 24 | Parker, Bradley W | 2 | 1 |
| 24 | Sheinfeld, Brian | 2 | 1 |
| 24 | Strychor, Rodney | 2 | 1 |
| 29 | Jeske, Michael P (17) | 1½ | 1 |
| 29 | Meigs, Donald J | 1½ | 1 |
| 31 | Foreman, Fred D | 1 | 2 |
| 31 | Vaughn, Alvin Leroy | 1 | 2 |
| Tied for 33 are: Max Bolotinsky (13), John J Caliguire, Dan H Chernoff, Jim M Haas, Vassil K Prokhov, Kevin Sivaneri (13), Jason A Smith, Stephen Terrell (10) | | | |
| 41 | Xiao, Michael (16) | ½ | 1 |
| Tied for 42 are: Danielle Feffer (5), Dennis M Reilly, Elias Stewart (14), Gregory L Vaserstein | | | |