

Downloading and Installing the PureEdge Viewer and the PureEdge Viewer Upgrade

This user guide is adapted for use at the University of Pittsburgh from the complete User Guide offered by Grants.gov.

Downloading PureEdge Viewer

To download the Application Viewer:

1. Click the link on the **Download Application Viewer** screen at <http://www.grants.gov/DownloadViewer>
2. Verify that your computer meets the system requirements.
3. **NOTE: This application will NOT work on Macintosh or other non-Windows operating systems. You must use either the Citrix server option or Windows emulation software to complete the forms. To obtain further details regarding PureEdge support for Non-Windows user, please click the following link:** <http://www.grants.gov/MacSupport>
4. Download PureEdge Viewer.
5. Install PureEdge Viewer.

In order to access and complete applications, you will need to download and install the PureEdge Viewer, a small, free program.

PureEdge Viewer: Minimum System Requirements

For PureEdge Viewer to function properly, your computer must meet the following system requirements:

Windows 98, ME, NT 4.0, 2000, XP*

500 Mhz processor

128 MB of RAM

40 MB disk space

Web browser: Internet Explorer 5.01 or higher, Mozilla or Firefox

If you have problems setting-up the software, you may not have security permissions to install new programs on your system. If that is the case, you should contact your system administrator.

Download Application Viewer screen

Grants.gov - Apply for Grants - Download Application Viewer - Microsoft Internet Explorer

Address: <http://www.grants.gov/DownloadViewer#>

Download Application Viewer

The PureEdge Viewer is a small, free program which will allow you to access, complete and submit applications electronically and securely on Grants.gov. Grants.gov is currently working with PureEdge to develop a unified download solution. However, temporarily:

All users MUST [download and install the PureEdge Viewer](#). Guidance on this process is available by accessing the "Help" button at the top of the screen or the [Downloading and Installation Tips](#) below.

System Requirements

For PureEdge Viewer to function properly, your computer must meet the following system requirements:

- Windows 98, ME, NT 4.0, 2000, XP
- 500 Mhz processor
- 128 MB of RAM
- 40 MB disk space
- Web browser: Internet Explorer 5.01 or higher, Netscape Communicator 4.5 - 4.8, Netscape 6.1, 6.2, or 7

If you do not have a Windows operating system, you will need to use a Windows Emulation program. Access [Customer Support](#) for more information.

Non-Windows Users:

For additional information, please review the [PureEdge Support for Non-Windows Users page](#).

Downloading and Installation

For users who plan to access, complete, and submit applications on Grants.gov:

- 1) To **download and install the PureEdge Viewer**, access the [PureEdge Viewer](#) link below:
http://www.grants.gov/PEViewer/ICSViewer602_grants.exe

For Existing Users who have previously accessed, completed, and submitted applications on Grants.gov:

There has been an upgrade to the PureEdge Viewer. To upgrade the PureEdge Viewer, access the [PureEdge Viewer Upgrade](#) link below: <http://www.grants.gov/PEViewer/PureEdgeUpgradeSetup.exe>

Download and Installation Tips:

- You will be prompted to save a file to your computer. Save it. It will download to your computer. Then locate the save

Click the http://www.grants.gov/PEViewer/ICSViewer602_grants.exe link.

This will open the **File Download** window (The actual window presented might differ slightly from this example).

File Download window

File Download - Security Warning

Do you want to run or save this file?

Name: ICSViewer602_grants.exe
Type: Application, 8.32 MB
From: www.grants.gov

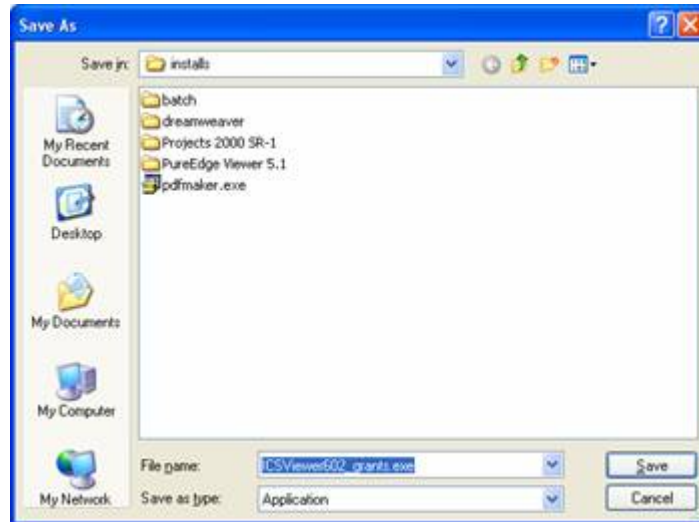
Run Save Cancel

While files from the Internet can be useful, this file type can potentially harm your computer. If you do not trust the source, do not run or save this software. [What's the risk?](#)

Click the **Save** button.

This will open the **Save As** window where you can designate where the program should save on your computer.

**Save As
window**



Browse to where you would like the program to save on your computer.

Once you have browsed to where you want PureEdge Viewer to save on your computer, click the **Save** button.

This will download the program. While the program is downloading, the **Download complete** window will show its progress.

**Download
Complete
window**



Make sure that the box next to **Close this dialog box when download completes** is NOT checked on the **Download Complete** window.

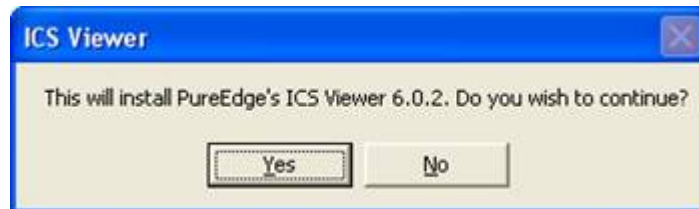
Installing PureEdge Viewer

When the download has completed, click the **Open (or Run)** button on the **Download complete** window.

If the Download Window closes when the download completes, you will need to locate the file that downloaded on your computer and open it.

When the installation file opens, it will prompt you with: **This will install PureEdge's ICS Viewer 6.0.2. Do you wish to continue?** (Please note that actual message may differ due to differences in browsers or browser versions)

**Prompt
screen**



Click the **Yes (or Run)** button.

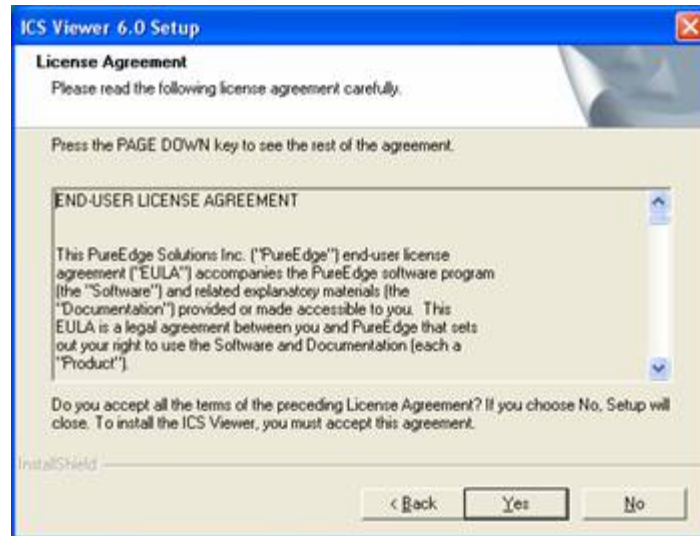
This will open the **ICS Viewer 6.0 KeySign** program setup.

**Welcome
screen**



Click the **Next** button to continue. This will take you to the License Agreement.

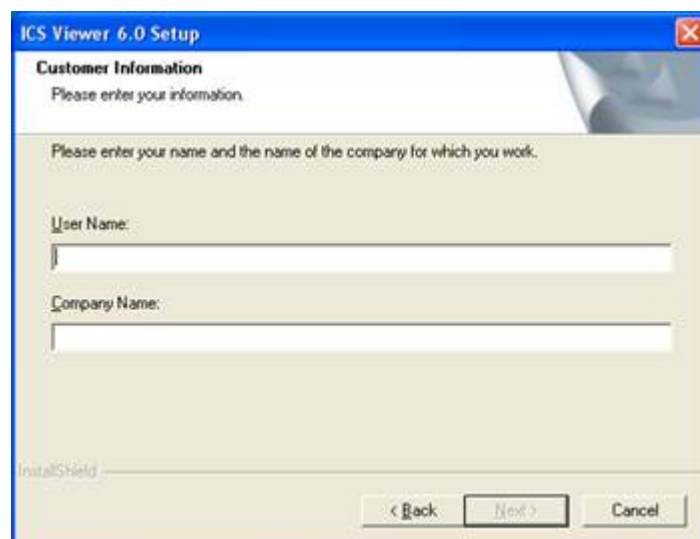
License Agreement screen



Read the License Agreement and click the **Yes** button to accept the agreement and continue with the installation.

This will take you to the **Customer Information** screen.

Customer Information screen



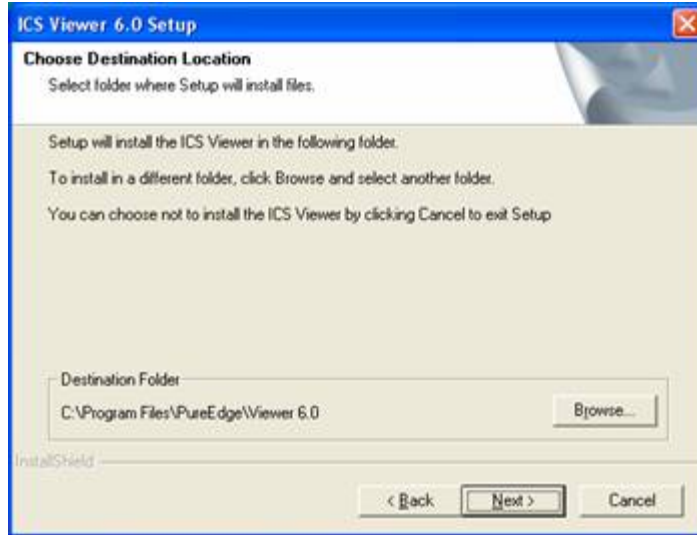
Enter a user name in the **User Name** field. Enter the University name in the **Company Name** field. This may be pre-populated, if so, click **Next**.

Click the **Next** button.

Note – the **Next** button will not become active until both fields are completed.

This will take you to **Choose Destination Location** screen.

**Choose
Destination
Location
screen**

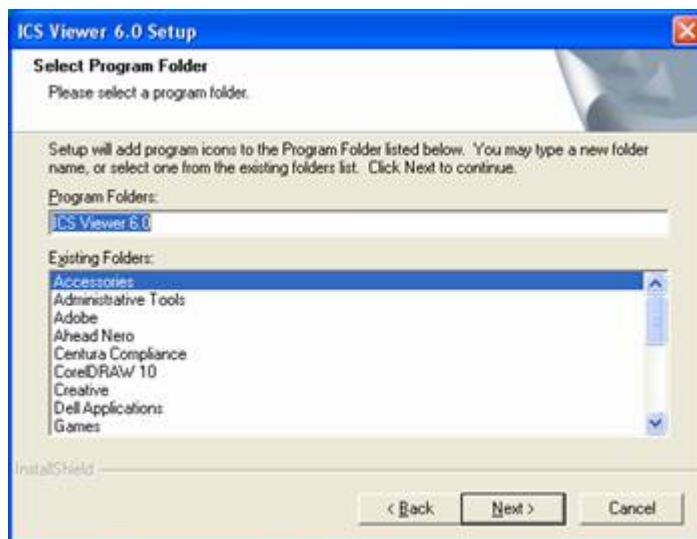


We recommend that you save the program at the default location displayed in the **Destination Folder** box.

Click the **Next** button to continue.

This will take you to **Select Program Folder** screen.

**Select
Program
Folder
screen**

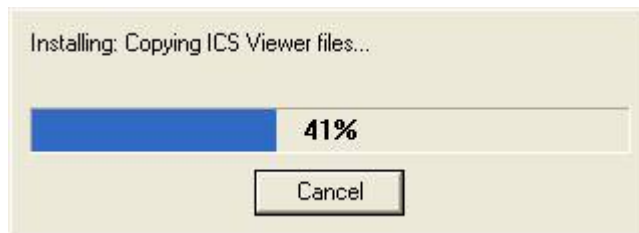


You may want to type in **PUREEDGE VIEWER** here instead of **ICS Viewer**.

Click the **Next** button to continue.

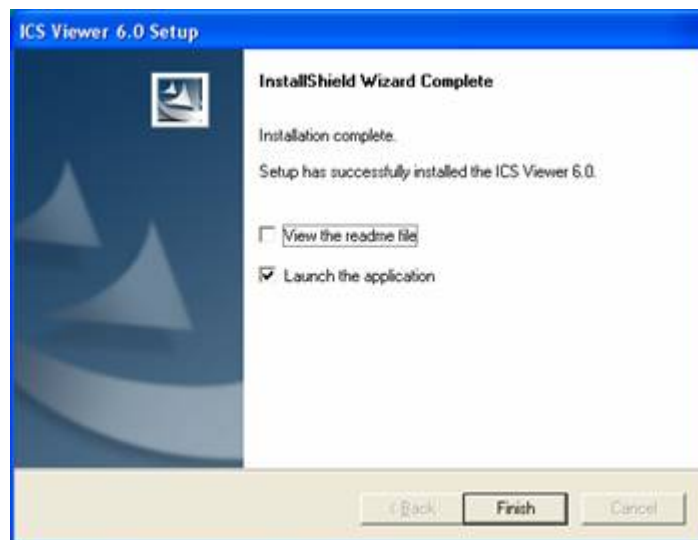
This will install the program. The installation progress will be displayed in the **Install** window.

Install window



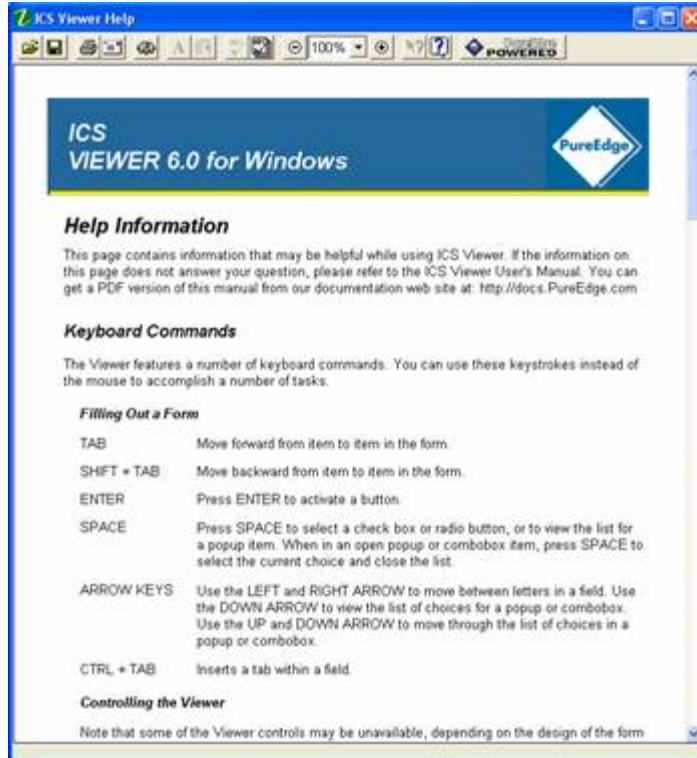
When the installation has completed, the **InstallShield Wizard Complete** screen will appear.

InstallShield Wizard Complete screen



Click the **Finish** button. This will launch the program and open the **ICS Viewer Help Information** window.

ICS Viewer
Help
Information
window



Downloading the PureEdge Upgrade

IMPORTANT: This software must be installed **BEFORE** you try to complete the application package!

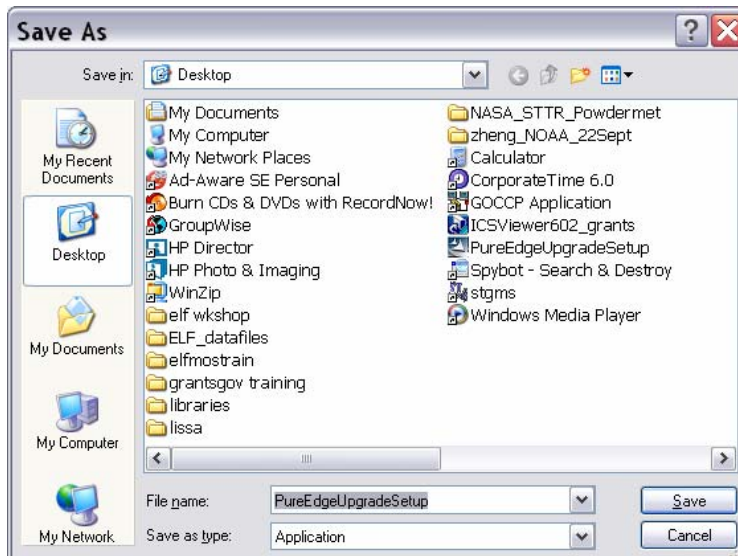
There is an upgrade to the PureEdge software. Please click on the following link to retrieve the upgrade, <http://www.grants.gov/PEViewer/PureEdgeUpgradeSetup.exe> .

The following, or similar, screen will appear

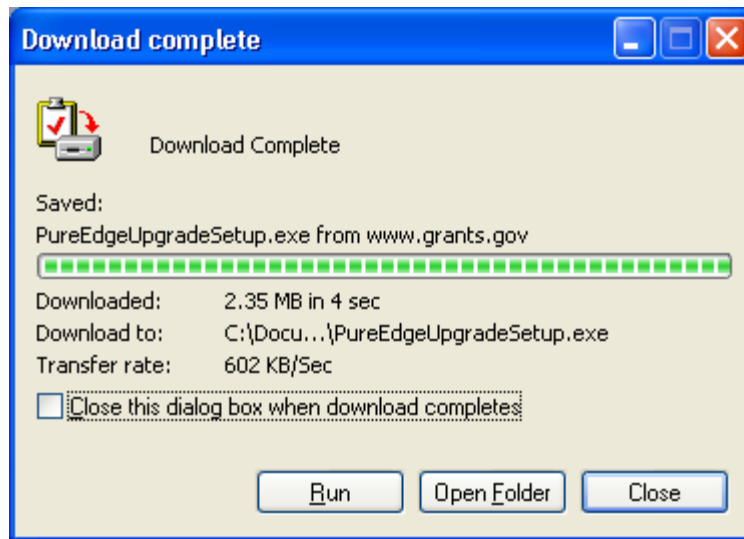


Click the **Save** button.

This will open the **Save As** window where you can designate where the program should save on your computer.



Click **Run** when the download is completed

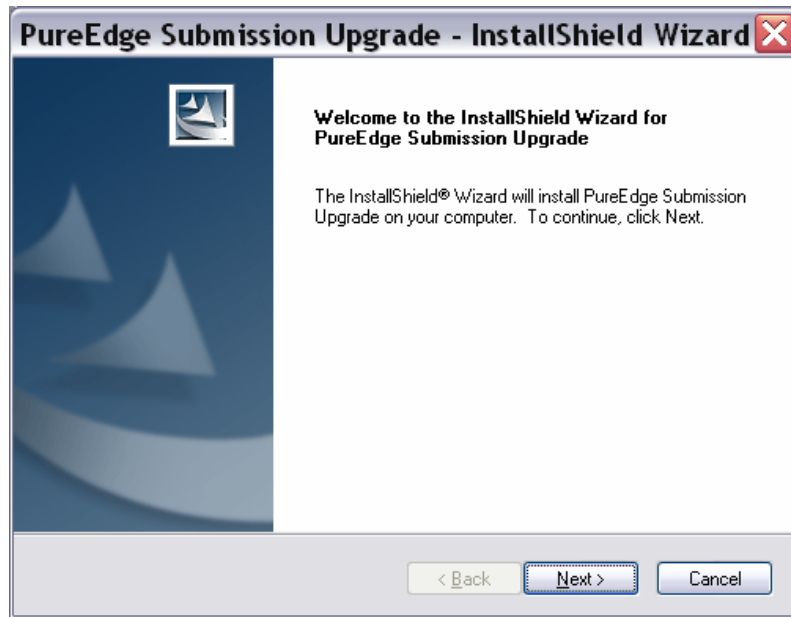


Installing the PureEdge Upgrade

Click **Run** when the below window, or a similar window, appears.



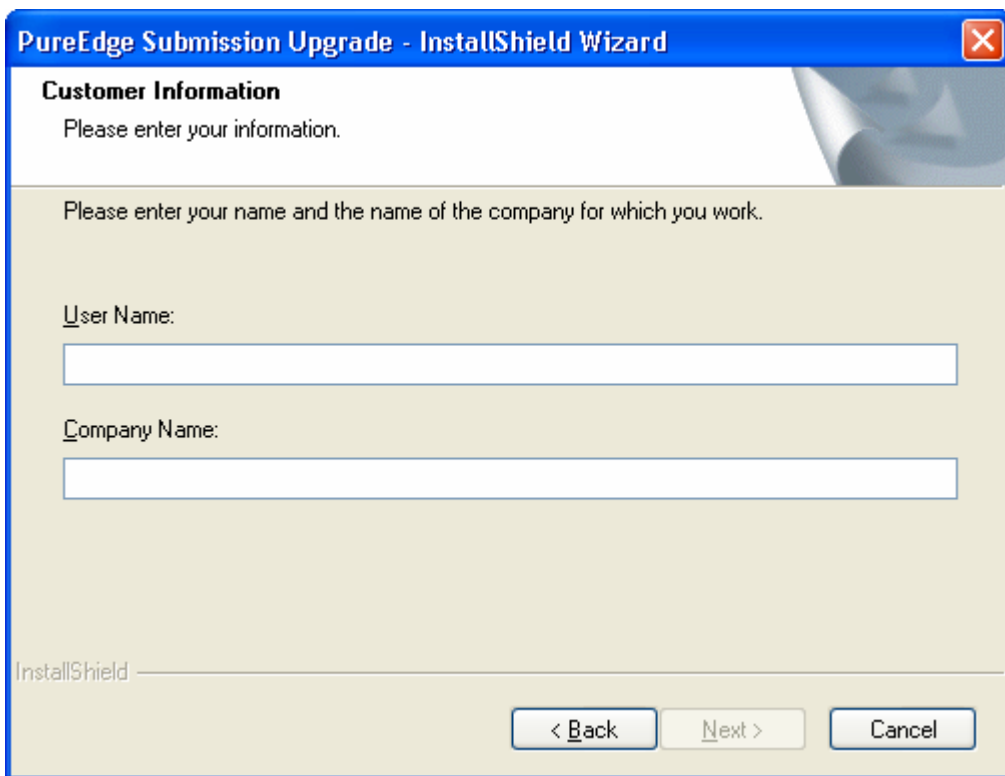
Click **Next** when the below window appears



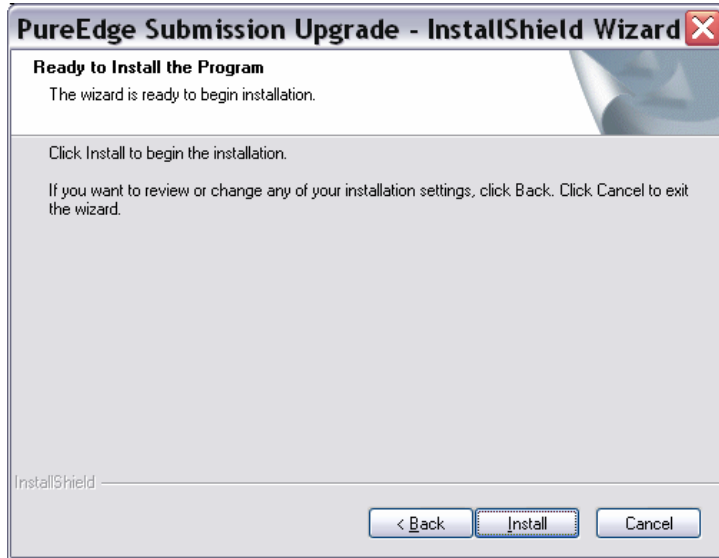
Enter a user name in the **User Name** field. Enter the University name in the **Company Name** field. This may be pre-populated, if so, click **Next**.

Click the **Next** button.

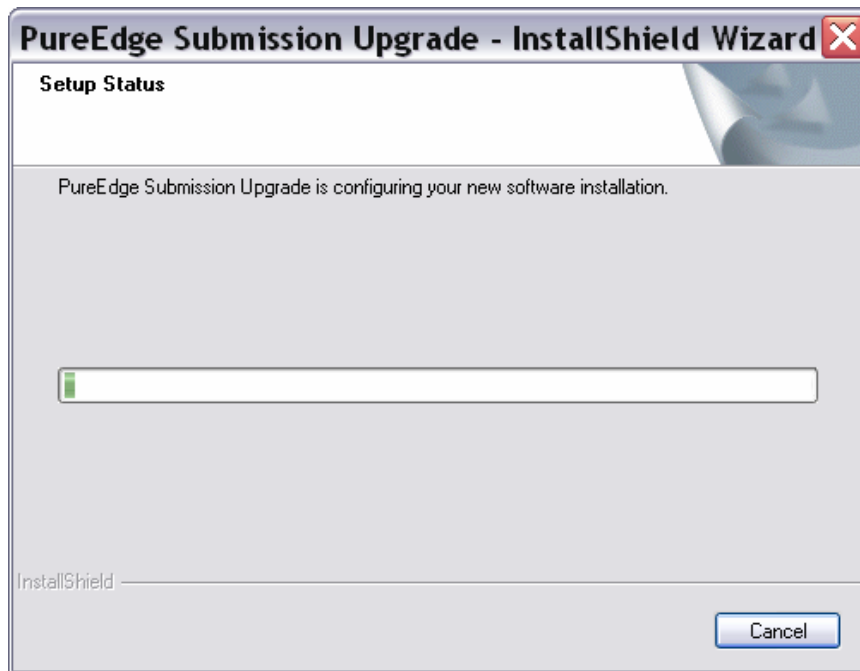
Note – the **Next** button will not become active until both fields are completed.



To begin the installation, click **INSTALL** when the screen below appears.



You will see a progress screen that shows the status of the installation.



When the installation is complete, you will see the screen below.

Your computer should be rebooted prior to using the PureEdge Viewer. Please choose the appropriate radio button regarding rebooting and click the **FINISH** button.

