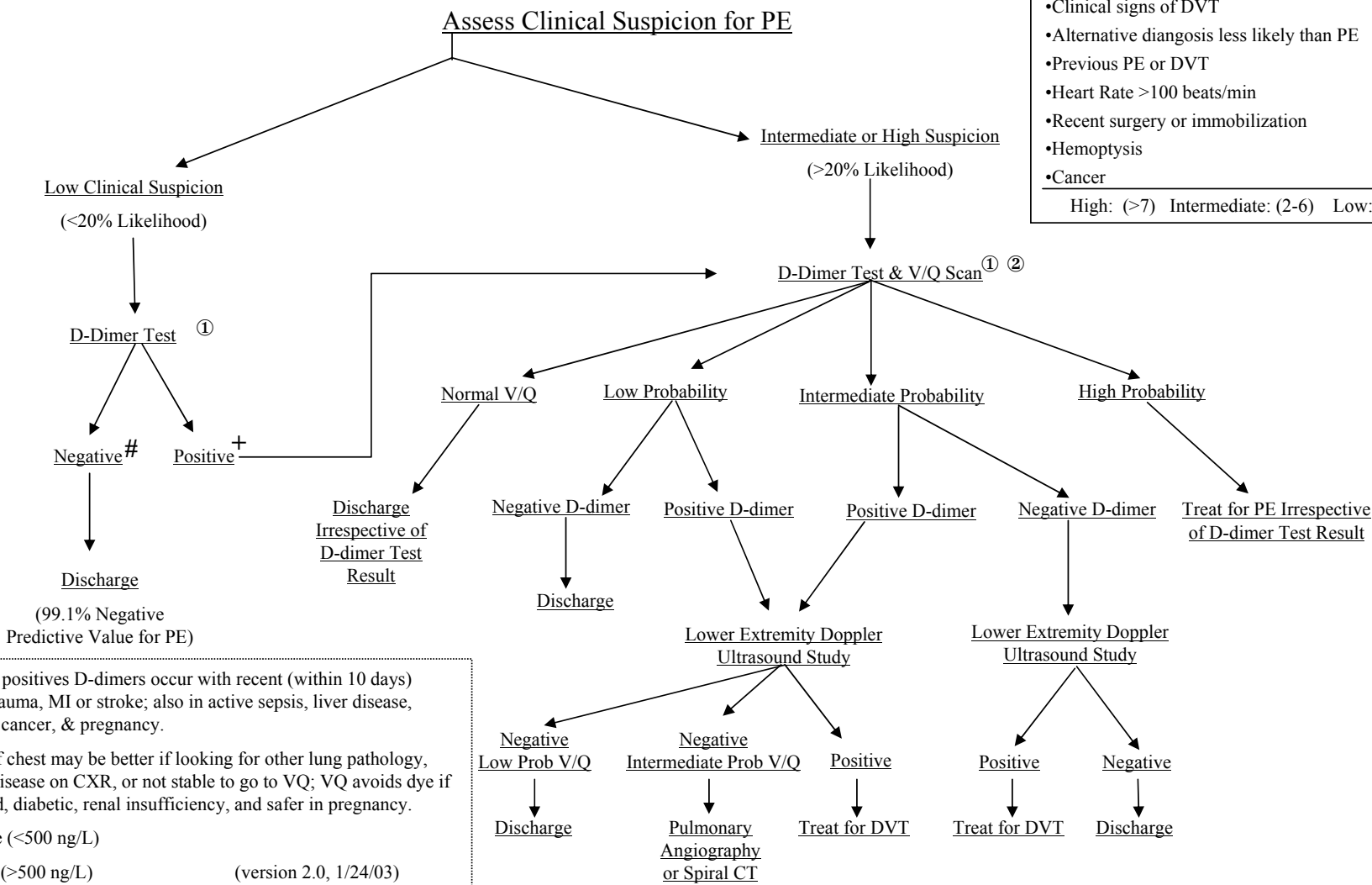


## DEM Pulmonary Embolism Evaluation Guidelines

<u>Clinical Pre-test Probability for PE</u>	
•Clinical signs of DVT	+3.0
•Alternative diagnosis less likely than PE	+3.0
•Previous PE or DVT	+1.5
•Heart Rate >100 beats/min	+1.5
•Recent surgery or immobilization	+1.5
•Hemoptysis	+1.0
•Cancer	+1.0
High: (>7) Intermediate: (2-6) Low: (0-1)	



① False positives D-dimers occur with recent (within 10 days) surgery, trauma, MI or stroke; also in active sepsis, liver disease, metastatic cancer, & pregnancy.

② CT of chest may be better if looking for other lung pathology, bad lung disease on CXR, or not stable to go to VQ; VQ avoids dye if dehydrated, diabetic, renal insufficiency, and safer in pregnancy.

# Negative (<500 ng/L)

+ Positive (>500 ng/L)

(version 2.0, 1/24/03)