

DEM ACUTE LOW BACK PAIN MANAGEMENT GUIDELINE

DEM Assessment of Acute Low Back Symptoms

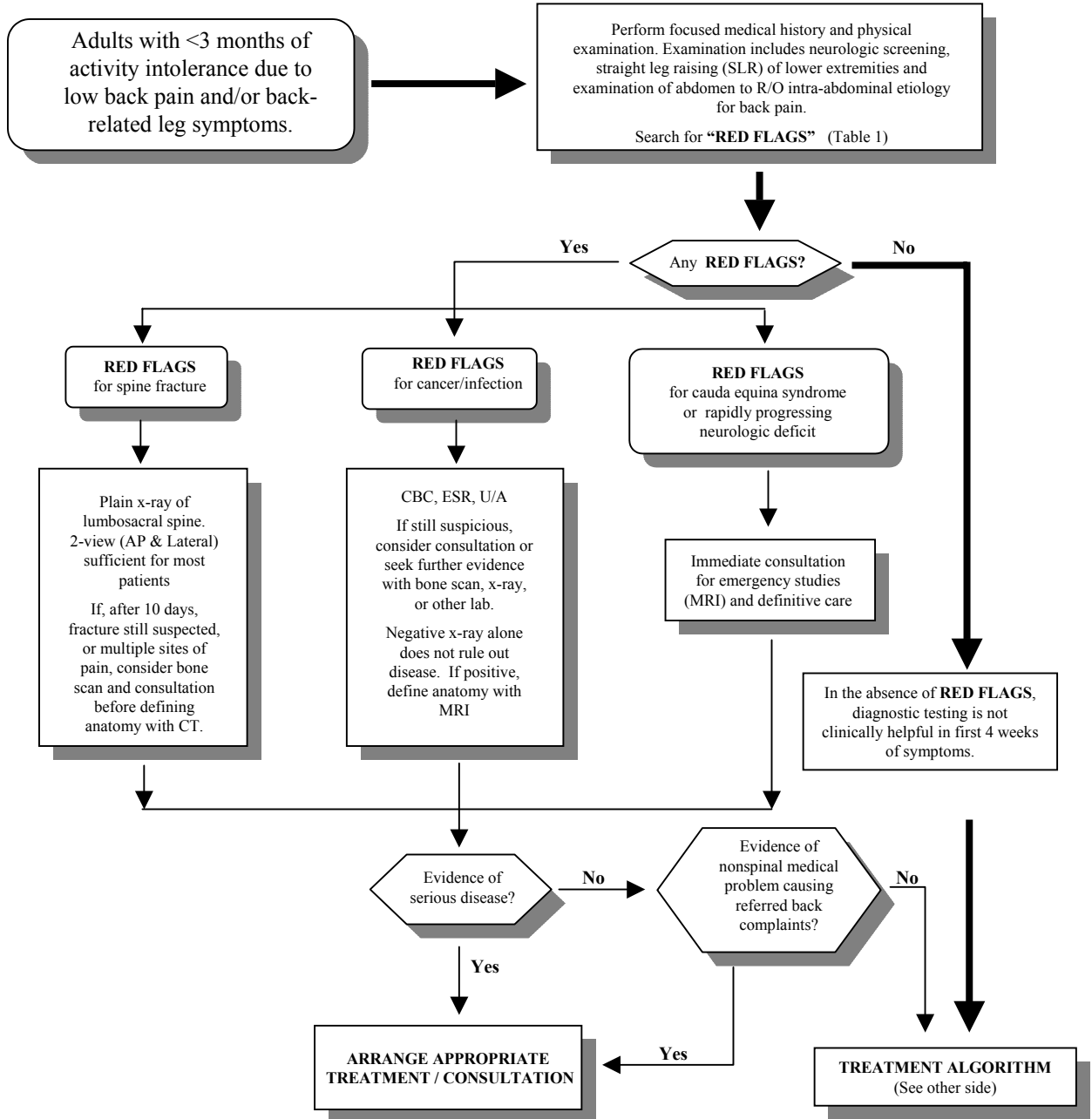


Table I: RED FLAGS

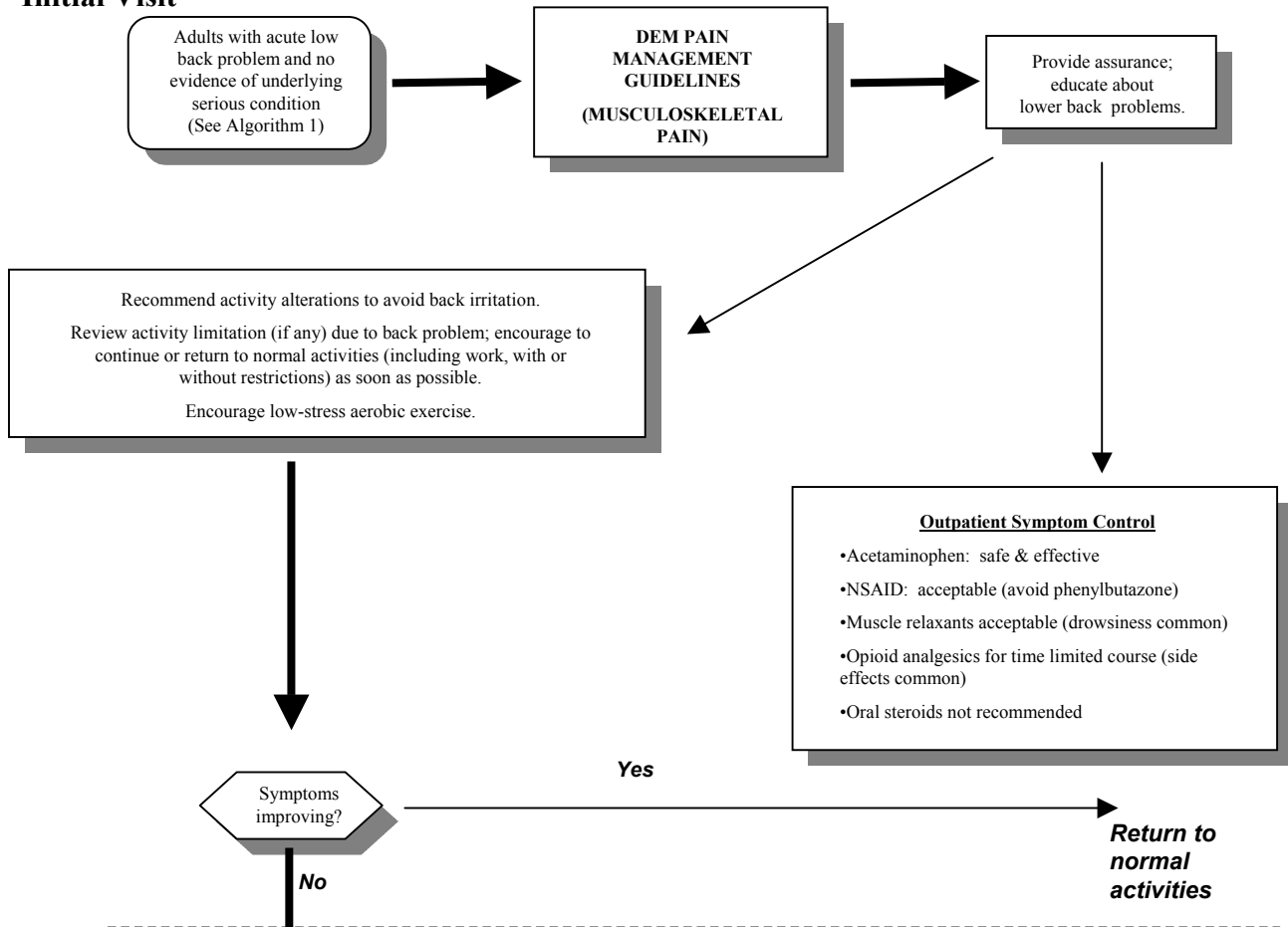
Spine Fractures:
Significant trauma, (i.e., blunt force, rapid deceleration) age ≥ 70 , prolonged steroid use.

Cancer/Infection:
History of cancer, unexplained weight loss, immunosuppression, UTI, IVDA, prolonged steroid use, back pain not responding to rest, age ≥ 50 .

Cauda Equina Syndrome or Severe Neurologic Compromise:
Urinary retention, overflow incontinence, fecal incontinence, loss of anal sphincter tone, saddle anesthesia, global/progressive motor weakness of lower limbs.

Treatment of Acute Low Back Problems on Initial and Follow-up Visits

Initial Visit



Followup Visit(s)

