

DEM Pain Management Guidelines / Algorithm

Patient with complaint of pain → No → END

Yes

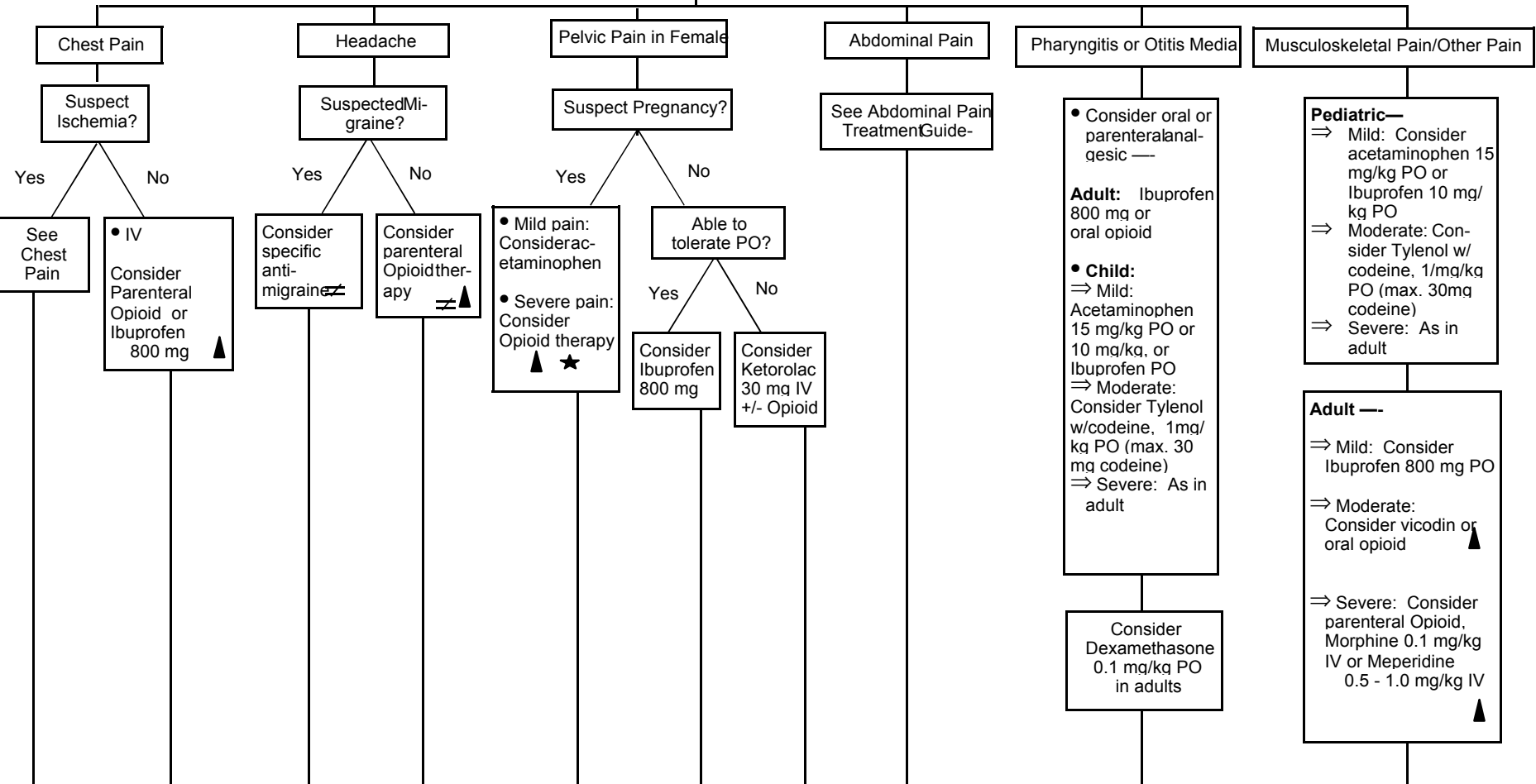
Primary RN:

- Complete Pain Scale
- Notify MD of Pain Complaint

≠ Consider pre-medicating for IV with sub Q Lidocaine. **(Currently MD only)**

★ Assumes hemodynamic stability.

▲ Use lower Opioid dose in elderly, hepatic, or renal failure. Consider non-Opioid therapy if patient is expected to drive home.



Suggestions for Parenteral Opioids:

- Morphine 0.1 mg/kg IV
- Meperidine 1.0 mg/kg IV
- Hydromorphone 1-4 mg IV
- Fentanyl 1-2 mcg/kg IV

Re-assess every hour until D/C

Pain controlled

Primary nurse to re-assess pain via pain scale 15 min after IV dose or 30 min after IM/PO

Pain persists or recurs

Primary nurse notifies MD to consider additional analgesia