

# FRIDAY

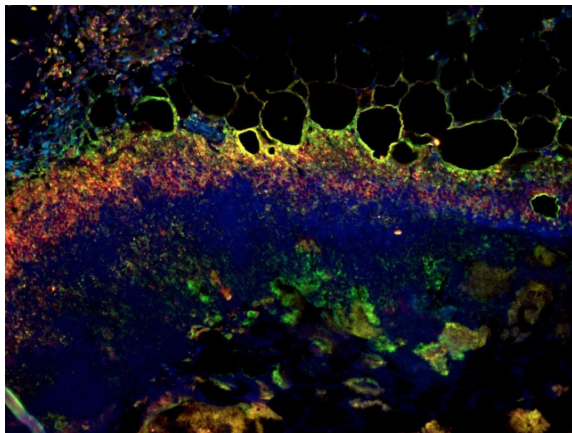
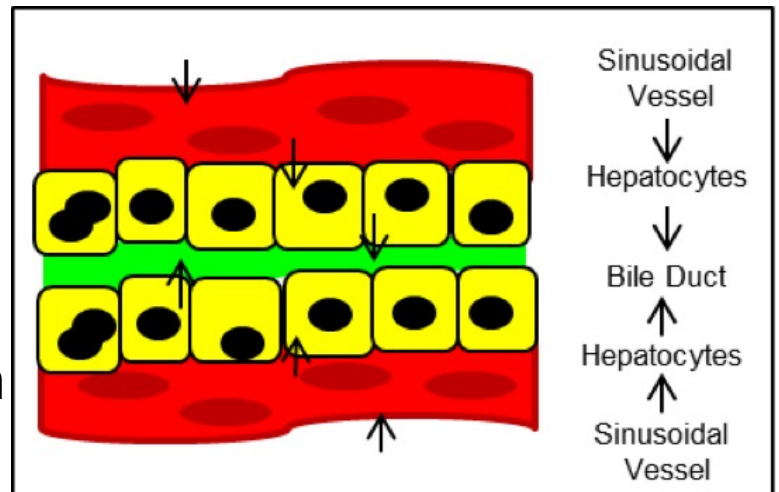
# September 8<sup>th</sup>



www.BSP-Seminars.net

## Dysregulated Bile Transporters and Liver Tight Junctions Enable Chronic Liver Injury

Presenter: Tirthadipa Pradhan  
Mentor: Paul Monga, M.D.



## PPAR $\gamma$ is Essential for the Resolution of *Staphylococcus aureus* Skin Infections

Presenter: Lance Thurlow  
Mentor: Anthony Richardson, Ph.D.

**12 PM - Lunch Provided**  
Bridgeside Point II Building  
Room 503  
**Everyone Welcome To Attend!**

Shuttle: Departs Hillman Center 11:20am – Departs BSP II 1:00pm  
**FIRST COME, FIRST SERVED**  
Parking reimbursements also available from Dr. Shuda