

FRIDAY

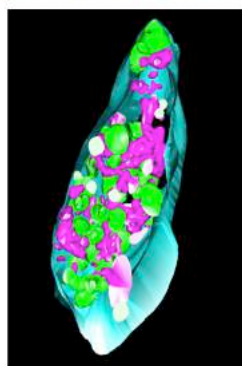
October 20th



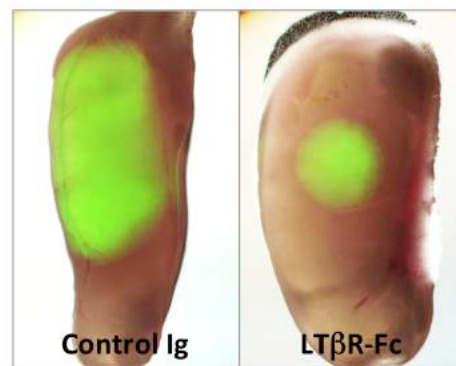
www.BSP-Seminars.net

Bioengineering a kidney in secondary lymphoid organs: the importance of the lymphotoxin-beta receptor pathway in tuning host-derived vascularization

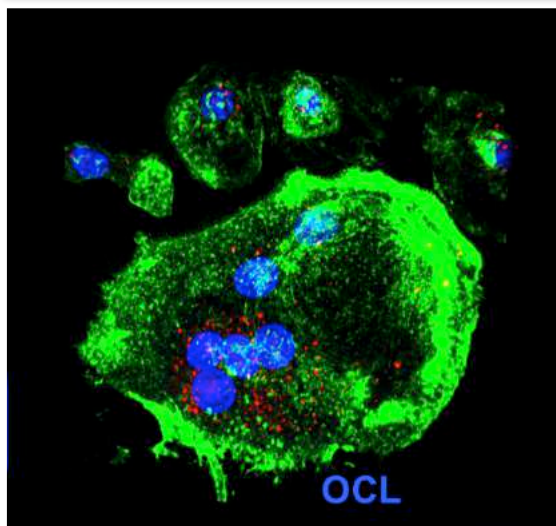
GLOMS TUBULES LN



KIDNEY LN



Presenter: Giovanna Francipane
Mentor: Eric Lagasse, PharmD, Ph.D.



EZH2 beyond remodeling: a novel cytoplasmic player in osteoclastogenesis

Presenter: Juraj Adamik
Mentor: Deborah Galson, Ph.D.

12 PM - Lunch Provided

Bridgeside Point II Building

Room 503

Everyone Welcome To Attend!

Shuttle: Departs Hillman Center 11:20am – Departs BSP II 1:00pm

FIRST COME, FIRST SERVED

Parking reimbursements also available from Dr. Shuda