

# FRIDAY

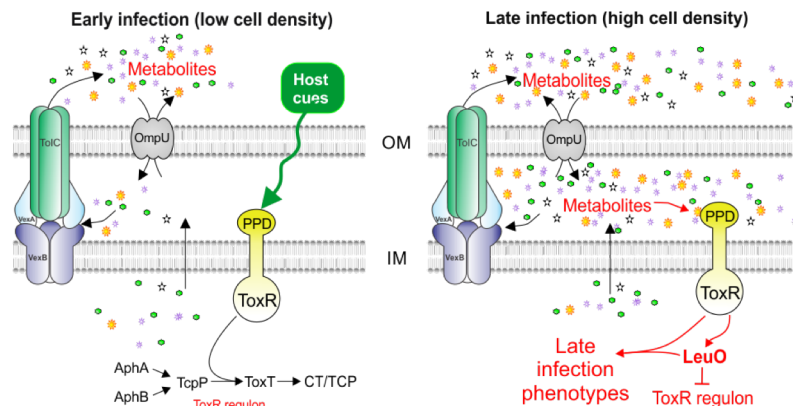
# Jan. 25<sup>th</sup>



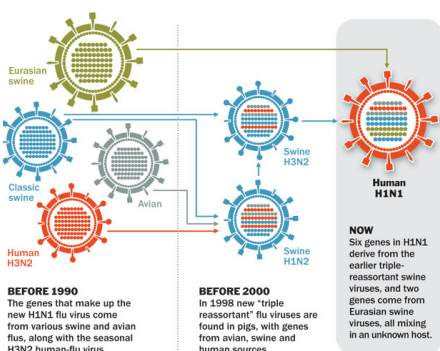
www.BSP-Seminars.net

## Characterizing the Activation State of ToxR

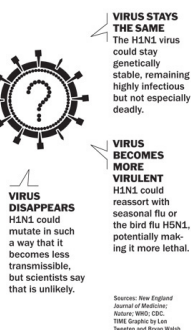
Presenter: Mondraya Howard  
Mentor: James Bina, Ph.D.



### How the H1N1 virus evolved ...



### ... and what it could become next



## The Puzzle of Packaging: Predicting Influenza Virus Genomic Assembly Order from Evolutionary History

Presenter: Jennifer Jones  
Mentor: Seema Lakdawala, Ph.D.

**12 PM - Lunch Provided**  
**Bridgeside Point II Building**  
**Room 503**  
**Everyone Welcome To Attend!**

Shuttle: Departs Hillman Center 11:20am – Departs BSP II 1:00pm  
**FIRST COME, FIRST SERVED**  
Parking reimbursements also available from Dr. Shuda