

# FRIDAY

# January 19<sup>th</sup>

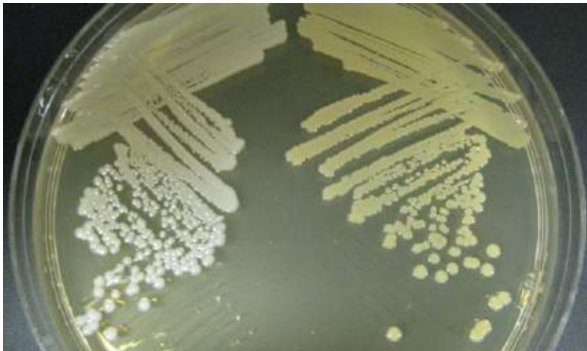
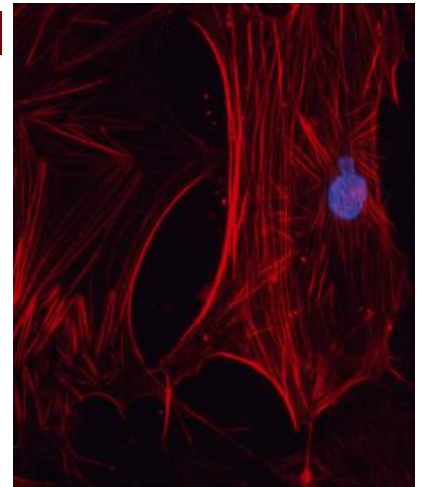


[www.BSP-Seminars.net](http://www.BSP-Seminars.net)

## **Tissue Engineered and Computational Models to Understand Biologic and Biomechanical Mechanisms of Bicuspid Valve Aortopathy and Aortic Dissection**

Presenter: Leonid Emerel

Mentor: Thomas Gleason, MD



## **Cellular Respiration and Nitric Oxide Resistance in *Staphylococcus aureus***

Presenter: Elyse Paluscio

Mentor: Anthony Richardson, PhD

**12 PM - Lunch Provided**  
**Bridgeside Point II Building**  
**Room 503**  
**Everyone Welcome To Attend!**

**Shuttle: Departs Hillman Center 11:20am - Departs BSP II 1:00pm**

**FIRST COME, FIRST SERVED**

**Parking reimbursements also available from Dr. Shuda**