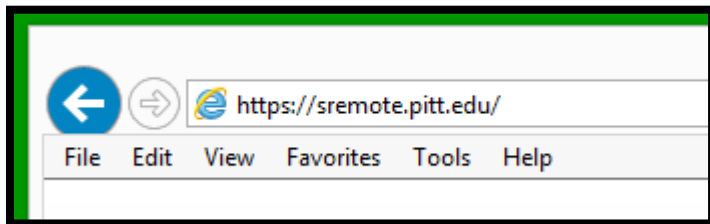


# The Pit-Greensburg Digital Sandbox (GDS): Connecting to the DHDS GDS service securely from a remote location

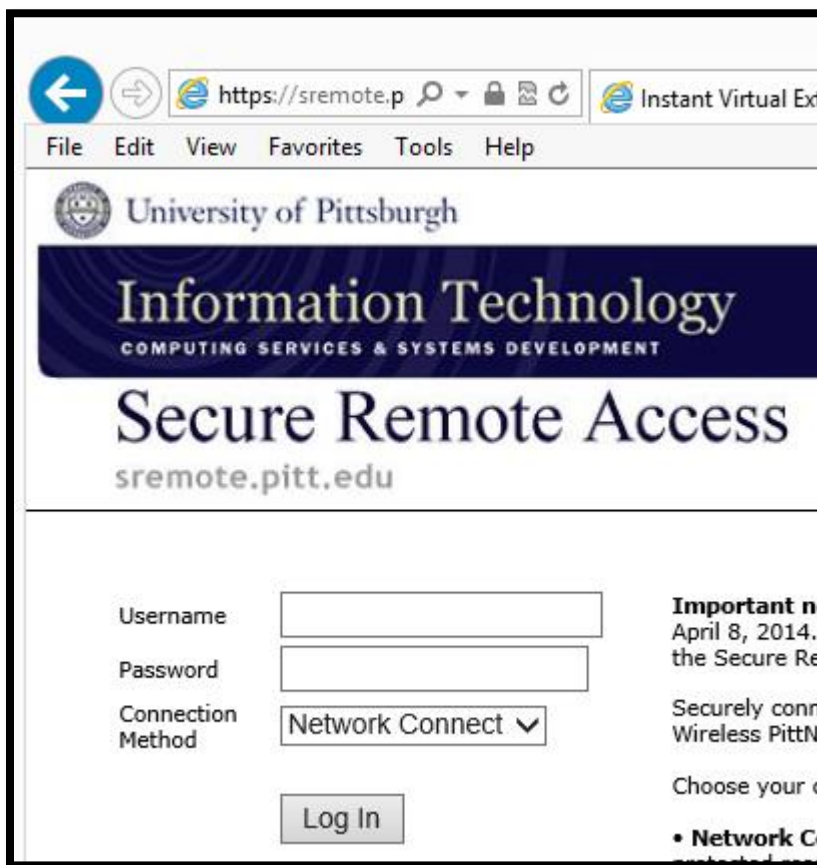
If you are connecting to the Insider system from an off-campus location, you will need to create a secure connection. To do so, you need to use the Pitt secure remote access service.

Note: you should be able to access the service from a Pitt-Greensburg computing lab or computing classroom directly (without having to use the secure connection method explained here); if you can't please see the instructions at the end of this document to request help.

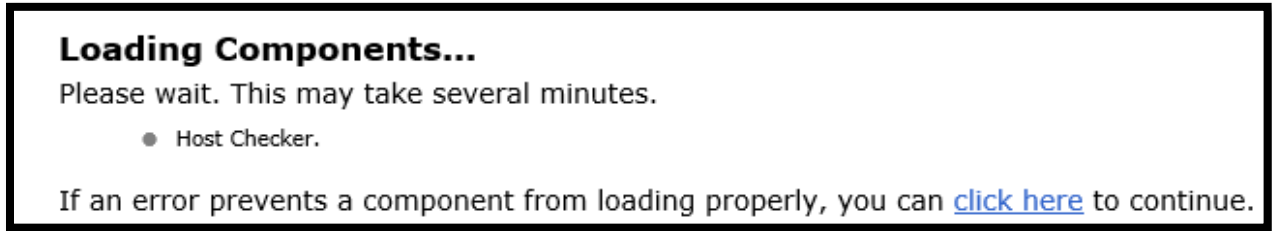
1. Load Internet Explorer and navigate to <https://sremote.pitt.edu/>



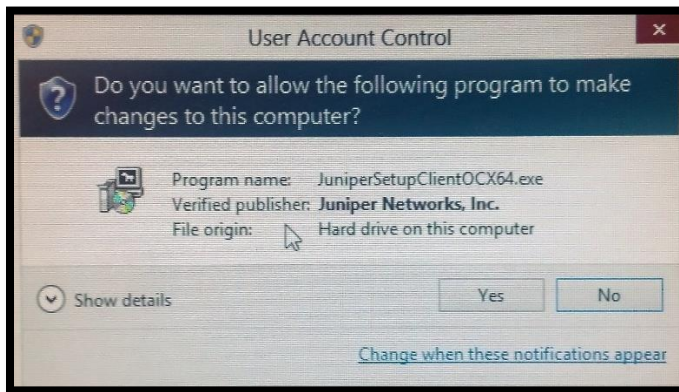
2. Enter your Pitt username and password, ensure that "Network Connect" is selected in the dropdown menu, and click **Log In**:

A screenshot of the Secure Remote Access login page. The page header includes the University of Pittsburgh logo and the text "Information Technology COMPUTING SERVICES & SYSTEMS DEVELOPMENT". Below this is the title "Secure Remote Access" and the URL "sremote.pitt.edu". The login form consists of three input fields: "Username", "Password", and "Connection Method". The "Connection Method" dropdown menu is set to "Network Connect". A "Log In" button is located below the input fields. On the right side of the page, there is a notice: "Important notice: April 8, 2014, the Secure Remote Access service will be updated to support securely connecting to Wireless PittN..." and "Choose your connection method".

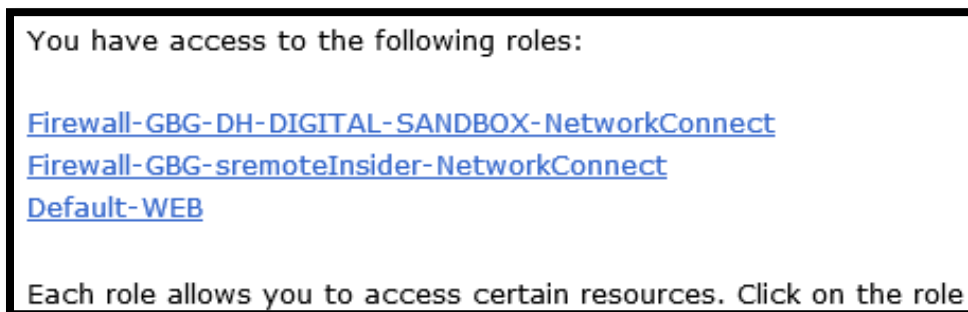
3. You may see the following screen while the service loads. Do not click the “[click here](#) to continue” link:



4. If this is the first time you have used the secure remote access service, or the service has been updated recently, you may be prompted to install some components. Please click “Yes” or “OK” if you are prompted by the message shown below:

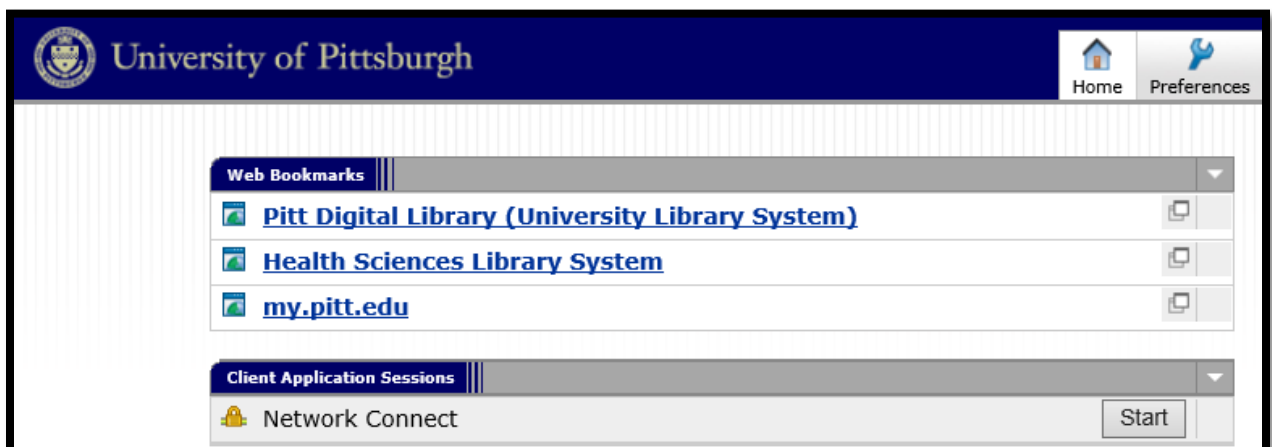


5. Once the service has loaded, you will be presented with a selection of links that will look something like this:

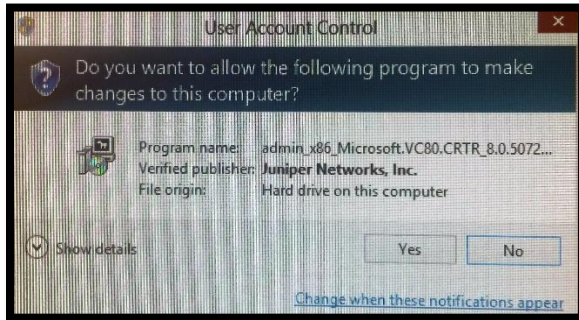


Click “[Firewall-GBG-DH-DIGITAL-SANDBOX-NetworkConnect](#)”

6. At the following screen, click the “Start” button. Do not click any of the other links.




7. You may be prompted to install some components. Please click “Yes” or “OK” when prompted to the message shown below:



8. You may see the following messages while the service loads:



9. Once the secure network connection has been established, the Web page will return to that shown in step 5, and a new icon () will appear on your task bar. Do not click the **Start** button again.



10. Your instructor may have uploaded content to the sandbox Web site; if so, you can type <http://www.dhds.gds.pitt.edu/> into your browser address bar (you do not need to use Internet Explorer for this part, and you do not need to keep the Internet Explorer window open now that your sremote session has connected).
11. You may also have been allocated you own Web space on the server. If so, the Web address for your content will be [http://www.dhds.gds.pitt.edu/users/YOUR\\_USERNAME/](http://www.dhds.gds.pitt.edu/users/YOUR_USERNAME/) (replace “YOUR\_USERNAME” with your Pitt username).
12. You instructor will provide details of how to connect to the sandbox to upload and download files. The connection details you will need to use for that are:  
Protocol: SFTP --- URL: sftp.dhds.gds.pitt.edu --- Port: 22

## How to request help

If you cannot access the Insider service or are having other problems connecting through the sremote system, please open a help ticket with the Pitt-Greensburg technology help desk. To do so, please log in to <http://help.greensburg.pitt.edu/helpdesk/> and open a new ticket describing the problem you are experiencing. A support team member will get back in touch with you as soon as they are able.